

CPS 9291/1 - Context Map

116°3'50.400"E

116°4'19.200"E

116°4'48.000"E

116°5'16.800"E

32°20'38.400"S

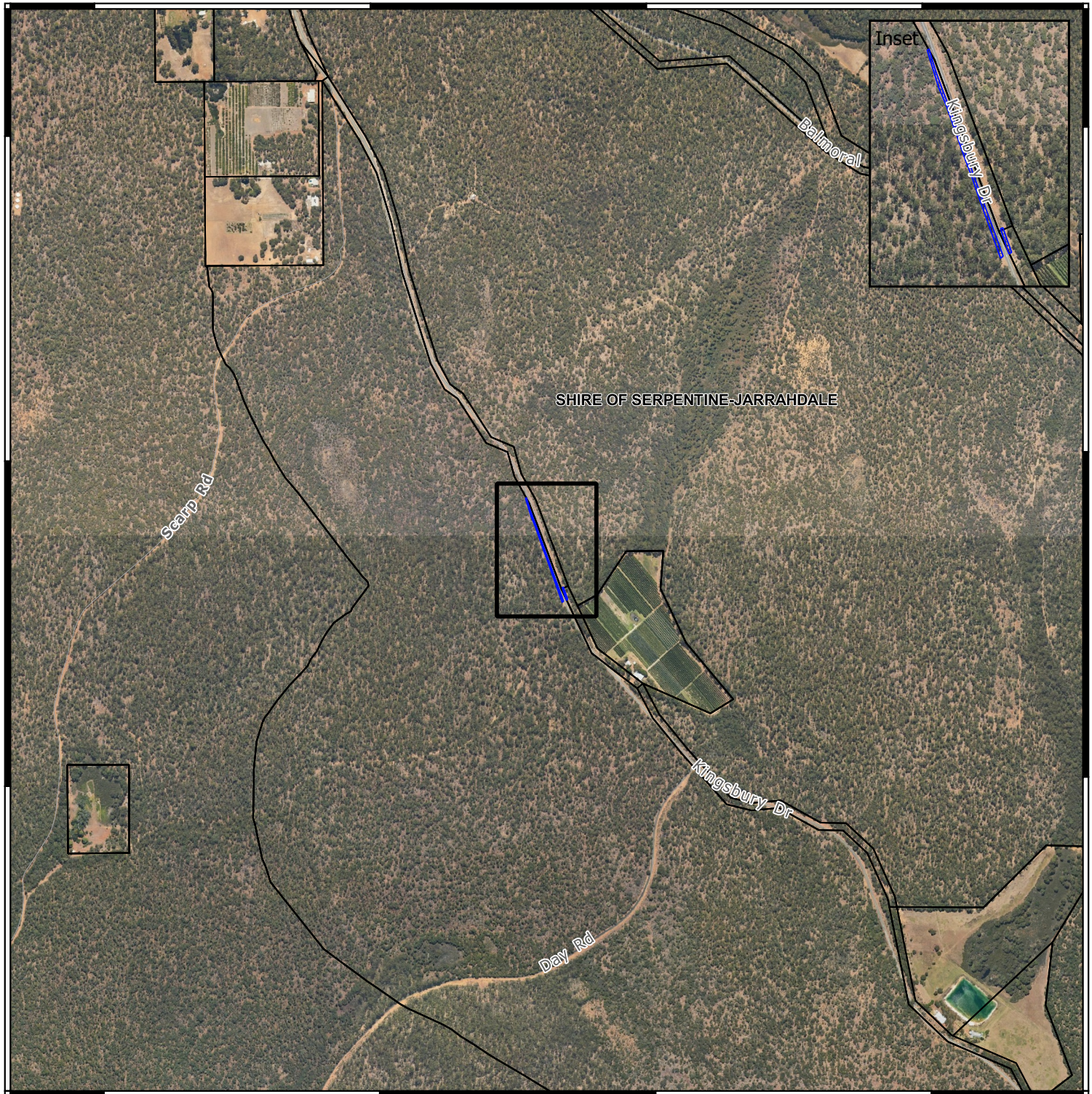
32°21'7.200"S

32°21'36.000"S

32°20'38.400"S

32°21'7.200"S

32°21'36.000"S

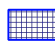


116°3'50.400"E

116°4'19.200"E

116°4'48.000"E

116°5'16.800"E

 CPS areas applied to clear

 Cadastral boundary



0 200 400 600 m



1:15000

MGA Zone 50
Geocentric Datum of Australia 1994

Officer delegated under section 20 of the
Environmental Protection Act 1986



GOVERNMENT OF
WESTERN AUSTRALIA