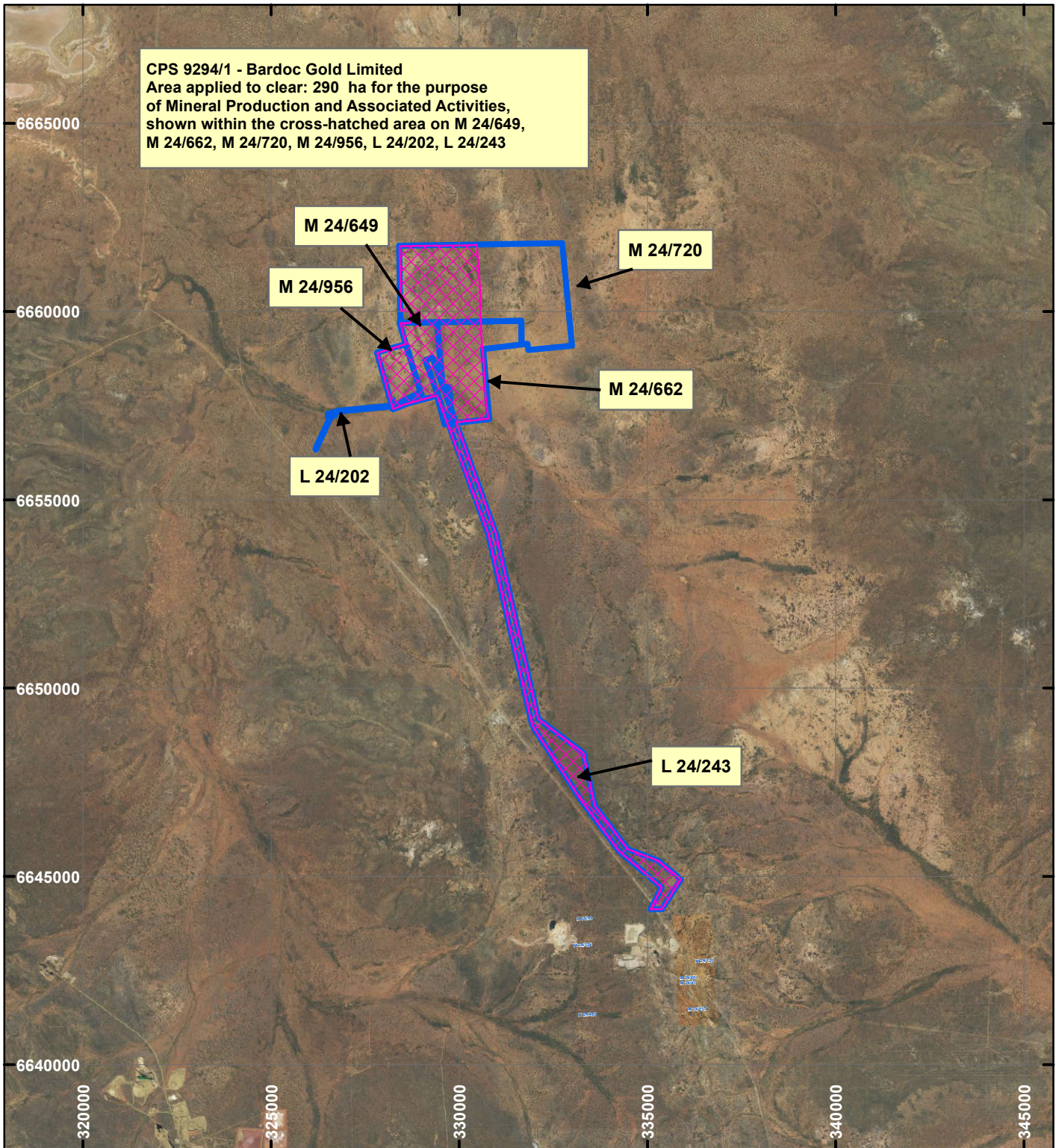


CPS 9294/1 - Bardoc Gold Limited



CPS 9294/1 - Bardoc Gold Limited
 Area applied to clear: 290 ha for the purpose
 of Mineral Production and Associated Activities,
 shown within the cross-hatched area on M 24/649,
 M 24/662, M 24/720, M 24/956, L 24/202, L 24/243

M 24/649

M 24/720

M 24/956

M 24/662

L 24/202

L 24/243

LEGEND

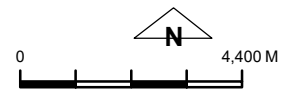


Clearing Instruments



Current Tenements

Orthophotography sourced from Landgate



Scale 1:150,000

(Approximate when reproduced at A4)

Geocentric Datum Australia 1994

Note: the data in this map have not been projected. This may result in geometric distortion or measurement inaccuracies.

..... Date

Officer with delegated authority under Section 20 of the Environmental Protection Act 1986

Information derived from this map should be confirmed with the data custodian acknowledged by the agency acronym in the legend.



WA Crown Copyright 2002