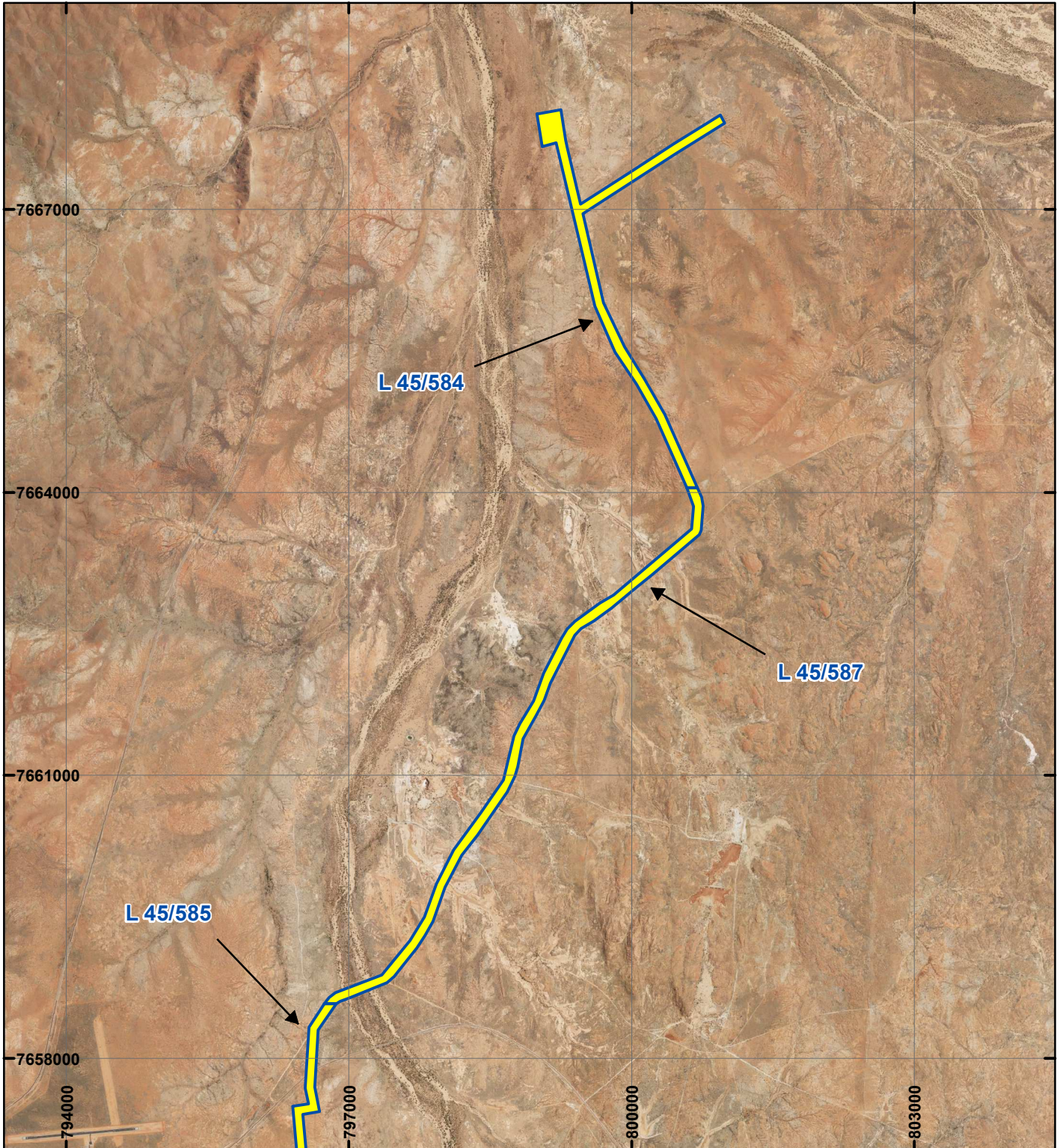

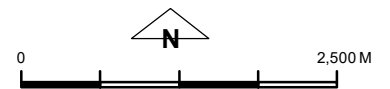


PLAN 9295/1A



LEGEND

-  Mining Tenements
- Clearing Instruments**
-  Areas Approved to Clear
- Orthophotography sourced from Landgate



Scale 1:60,000

(Approximate when reproduced at A4)

Geocentric Datum Australia 1994

Note: the data in this map have not been projected. This may result in geometric distortion or measurement inaccuracies.

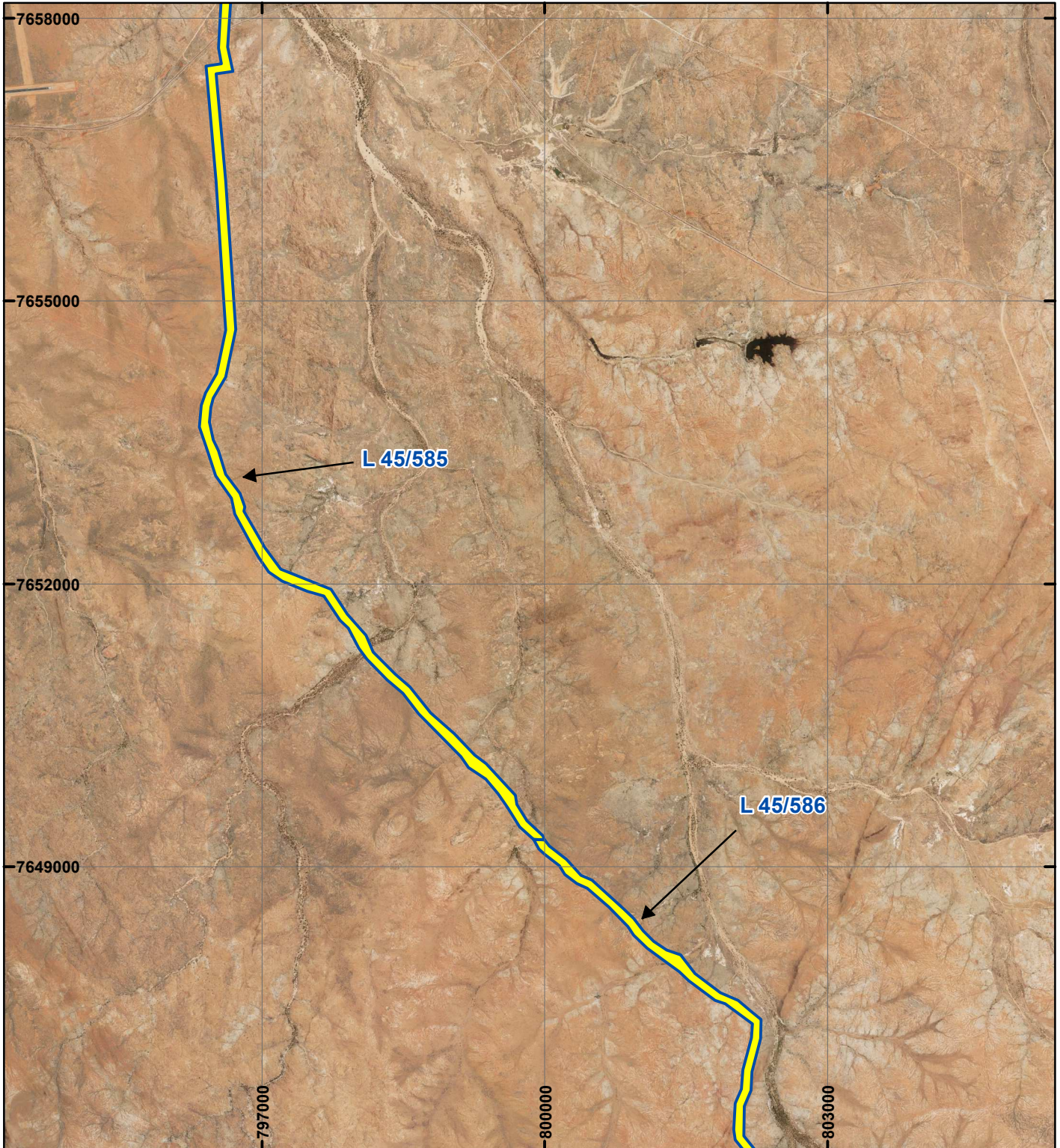
DANIEL ENDACOTT Date 22/07/2021

Officer with delegated authority under Section 20 of the Environmental Protection Act 1986

Information derived from this map should be confirmed with the data custodian acknowledged by the agency acronym in the legend.



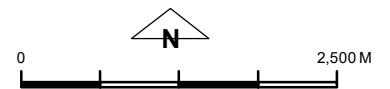
PLAN 9295/1B



LEGEND

-  Mining Tenements
- Clearing Instruments**
-  Areas Approved to Clear

Orthophotography sourced from Landgate



Scale 1:60,000

(Approximate when reproduced at A4)

Geocentric Datum Australia 1994

Note: the data in this map have not been projected. This may result in geometric distortion or measurement inaccuracies.

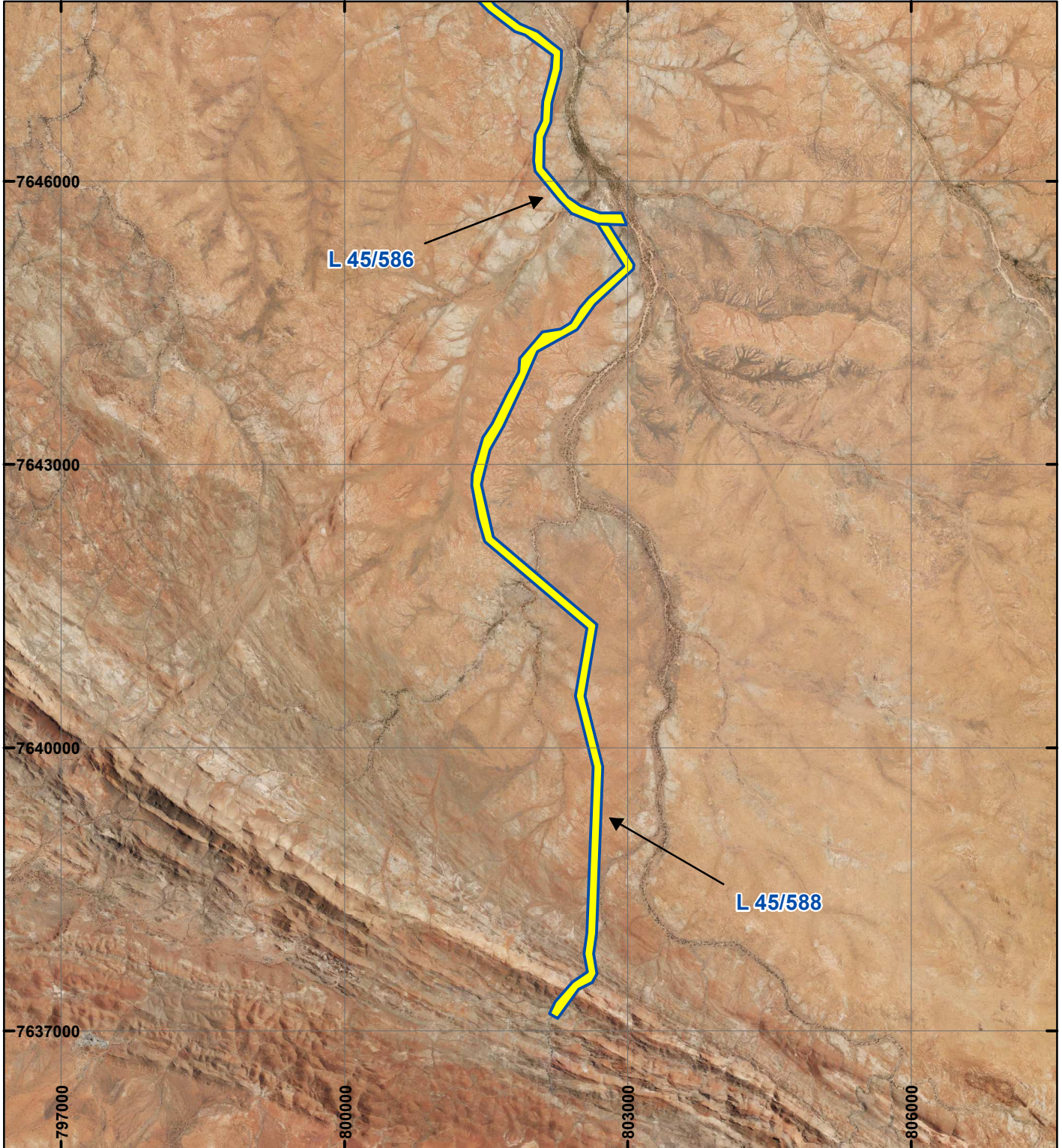
DANIEL ENDACOTT Date 22/07/2021

Officer with delegated authority under Section 20 of the Environmental Protection Act 1986



Information derived from this map should be confirmed with the data custodian acknowledged by the agency acronym in the legend.

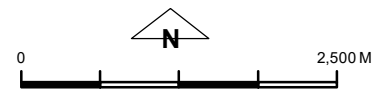


PLAN 9295/1C



LEGEND

-  Mining Tenements
- Clearing Instruments**
-  Areas Approved to Clear
- Orthophotography sourced from Landgate



Scale 1:60,000

(Approximate when reproduced at A4)

Geocentric Datum Australia 1994

Note: the data in this map have not been projected. This may result in geometric distortion or measurement inaccuracies.

DANIEL ENDACOTT Date 22/07/2021

Officer with delegated authority under Section 20 of the Environmental Protection Act 1986

Information derived from this map should be confirmed with the data custodian acknowledged by the agency acronym in the legend.



WA Crown Copyright 2002