

CPS 9301/1 - Context Map

115°20'9.600"E

115°20'38.400"E

115°21'7.200"E

115°21'36.000"E

115°22'4.800"E

31°3'21.600"S

31°3'50.400"S

31°4'19.200"S

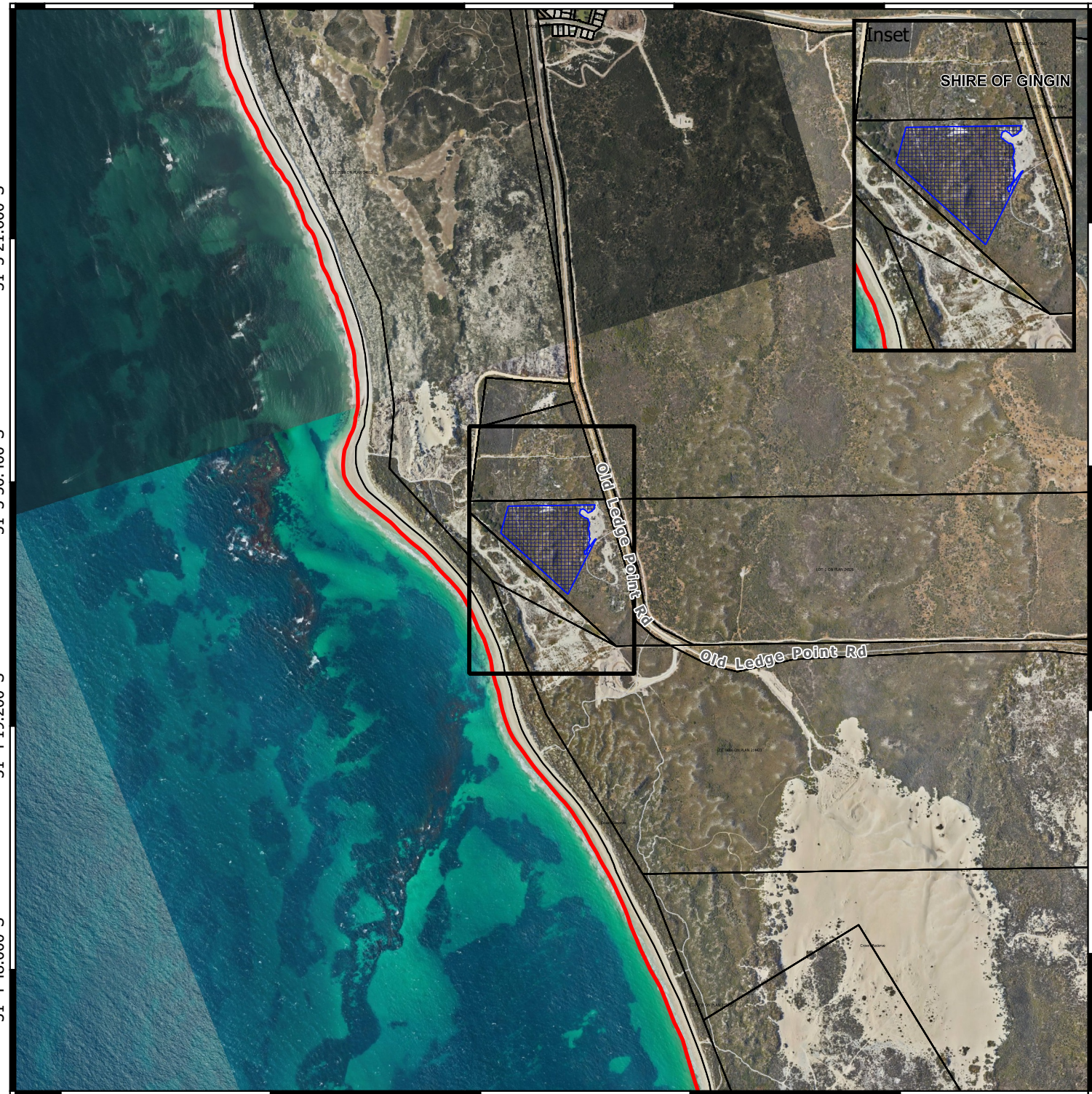
31°4'48.000"S

31°3'21.600"S

31°3'50.400"S

31°4'19.200"S

31°4'48.000"S



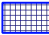

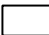

115°20'9.600"E

115°20'38.400"E

115°21'7.200"E

115°21'36.000"E

115°22'4.800"E

-  CPS areas applied to clear
-  Cadastral boundary
-  Cadastral boundary
-  Local Government Authorities



0 500 1000 m



Officer delegated under section 20 of the Environmental Protection Act 1986

1:20000

MGA Zone 50
Geocentric Datum of Australia 1994



GOVERNMENT OF
WESTERN AUSTRALIA