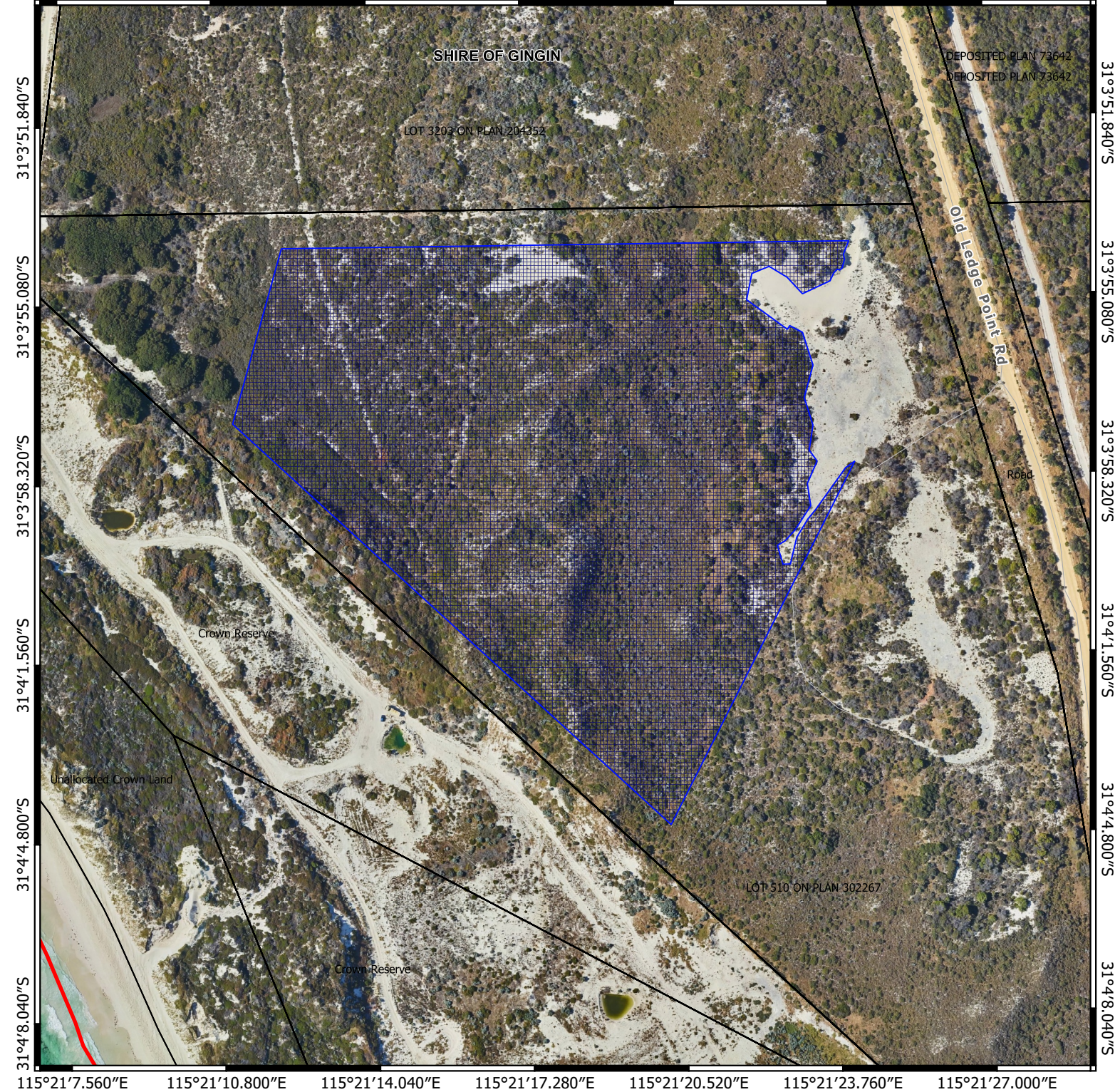


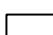



CPS 9301/1 - Map

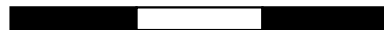
115°21'7.560"E 115°21'10.800"E 115°21'14.040"E 115°21'17.280"E 115°21'20.520"E 115°21'23.760"E 115°21'27.000"E



-  CPS areas applied to clear
-  Cadastral boundary
-  Cadastral boundary
-  Local Government Authorities



0 50 100 150 m



1:3000

MGA Zone 50
Geocentric Datum of Australia 1994

Officer delegated under section 20 of the
Environmental Protection Act 1986



GOVERNMENT OF
WESTERN AUSTRALIA