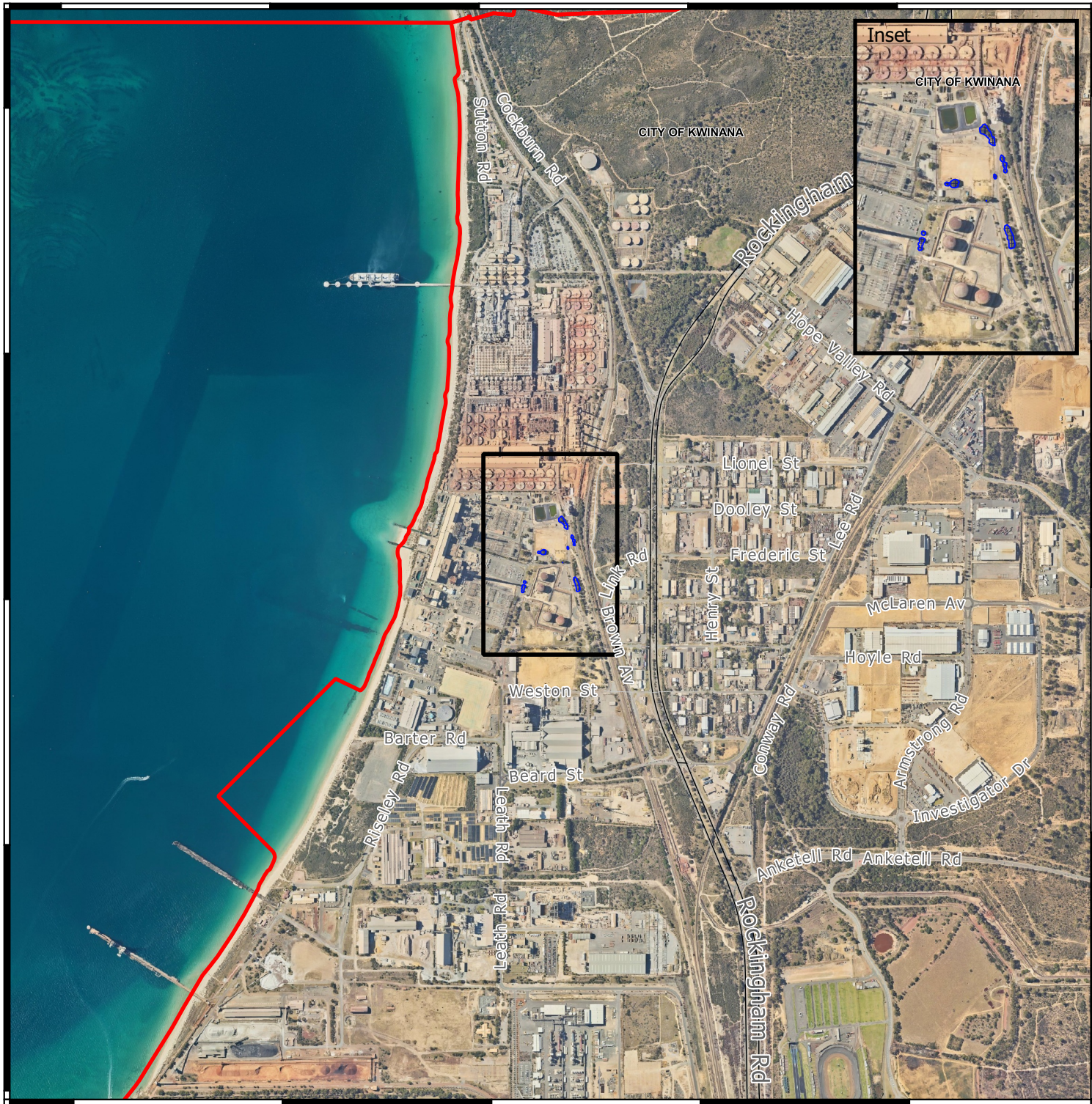




CPS 9312/1 - Context Map

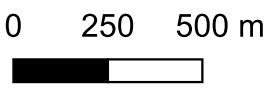
115°45'36.000"E 115°46'4.800"E 115°46'33.600"E 115°47'2.400"E 115°47'31.200"E

32°11'2.400"S
32°11'31.200"S
32°12'0.000"S
32°12'28.800"S
32°12'57.600"S

32°11'2.400"S
32°11'31.200"S
32°12'0.000"S
32°12'28.800"S
32°12'57.600"S



-  CPS areas applied to clear
-  Local Government Authorities



1:20000

MGA Zone 50
Geocentric Datum of Australia 1994

Officer delegated under section 20 of the
Environmental Protection Act 1986



GOVERNMENT OF
WESTERN AUSTRALIA