

# CPS 9312/1 - Map

115°46'36.480"E

115°46'39.360"E

115°46'42.240"E

115°46'45.120"E

115°46'48.000"E

32°11'51.360"S

32°11'54.240"S

32°11'57.120"S

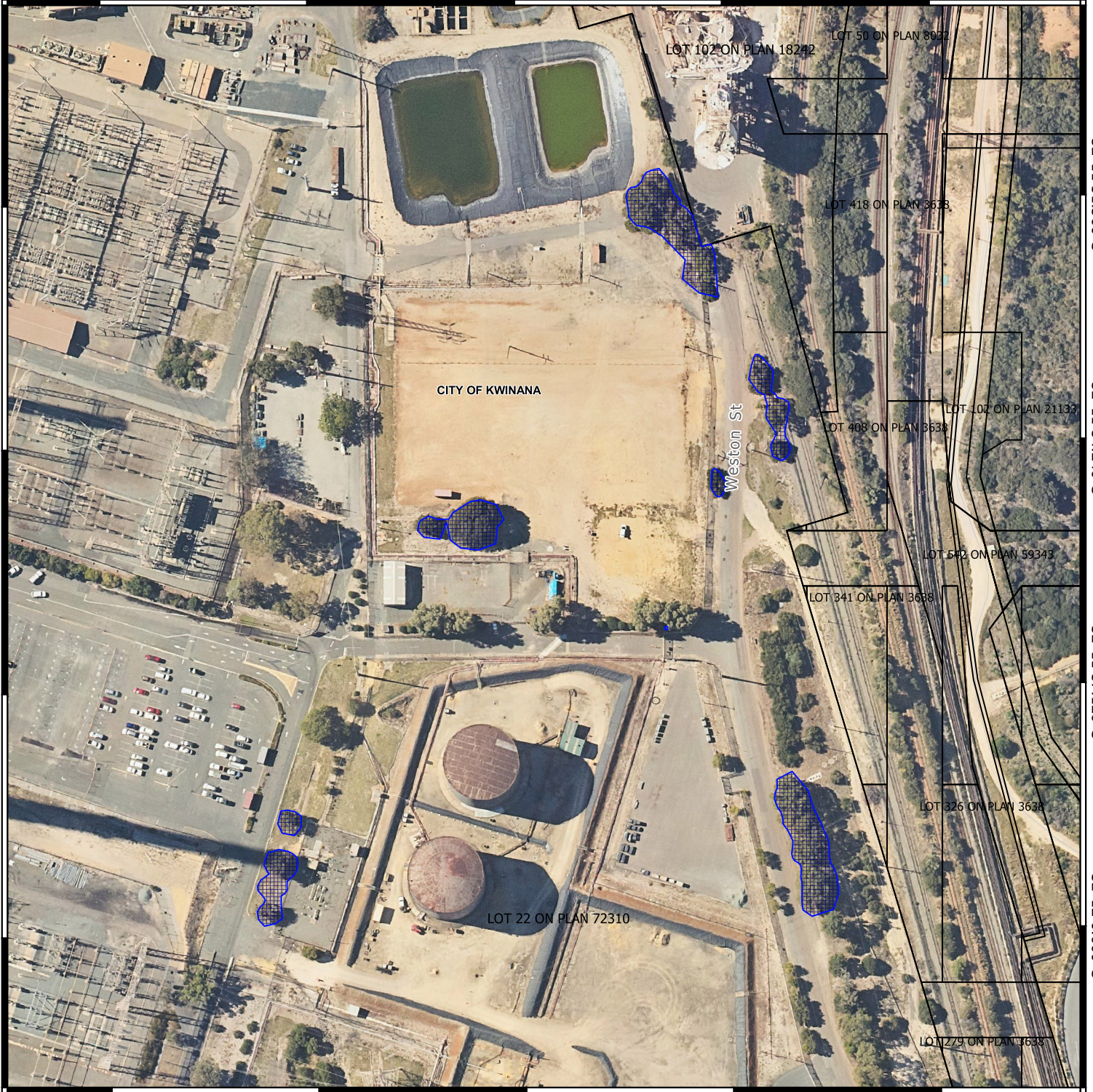
32°12'0.000"S

32°11'51.360"S

32°11'54.240"S

32°11'57.120"S

32°12'0.000"S



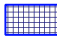
115°46'36.480"E

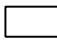
115°46'39.360"E

115°46'42.240"E

115°46'45.120"E

115°46'48.000"E

 CPS areas applied to clear

 Cadastral boundary



0 25 50 m



1:2000

MGA Zone 50  
Geocentric Datum of Australia 1994

Officer delegated under section 20 of the  
Environmental Protection Act 1986



GOVERNMENT OF  
WESTERN AUSTRALIA