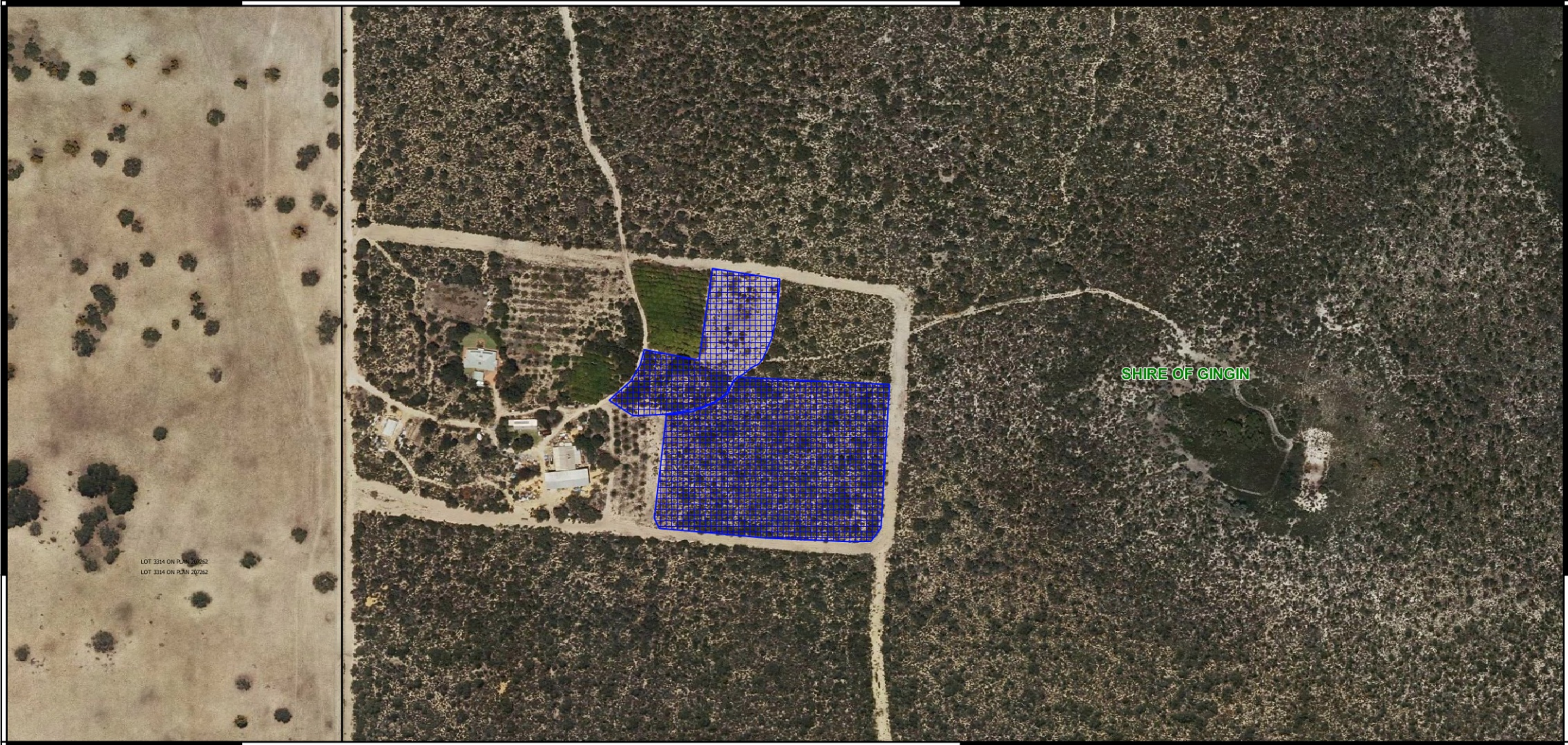


Map CPS 9314/1

115°35'6.000"E

115°35'24.000"E




31°09'36.000"S

31°09'36.000"S

115°35'6.000"E

115°35'24.000"E

CPS layers

 CPS areas applied to clear



0 50 100 150 200 m



1:2759

MGA Zone 51
Geocentric Datum of Australia 1994



GOVERNMENT OF
WESTERN AUSTRALIA