

# CPS 9331/1 - Map

115°3.570'E

115°3.600'E

115°3.630'E

33°37.140'S

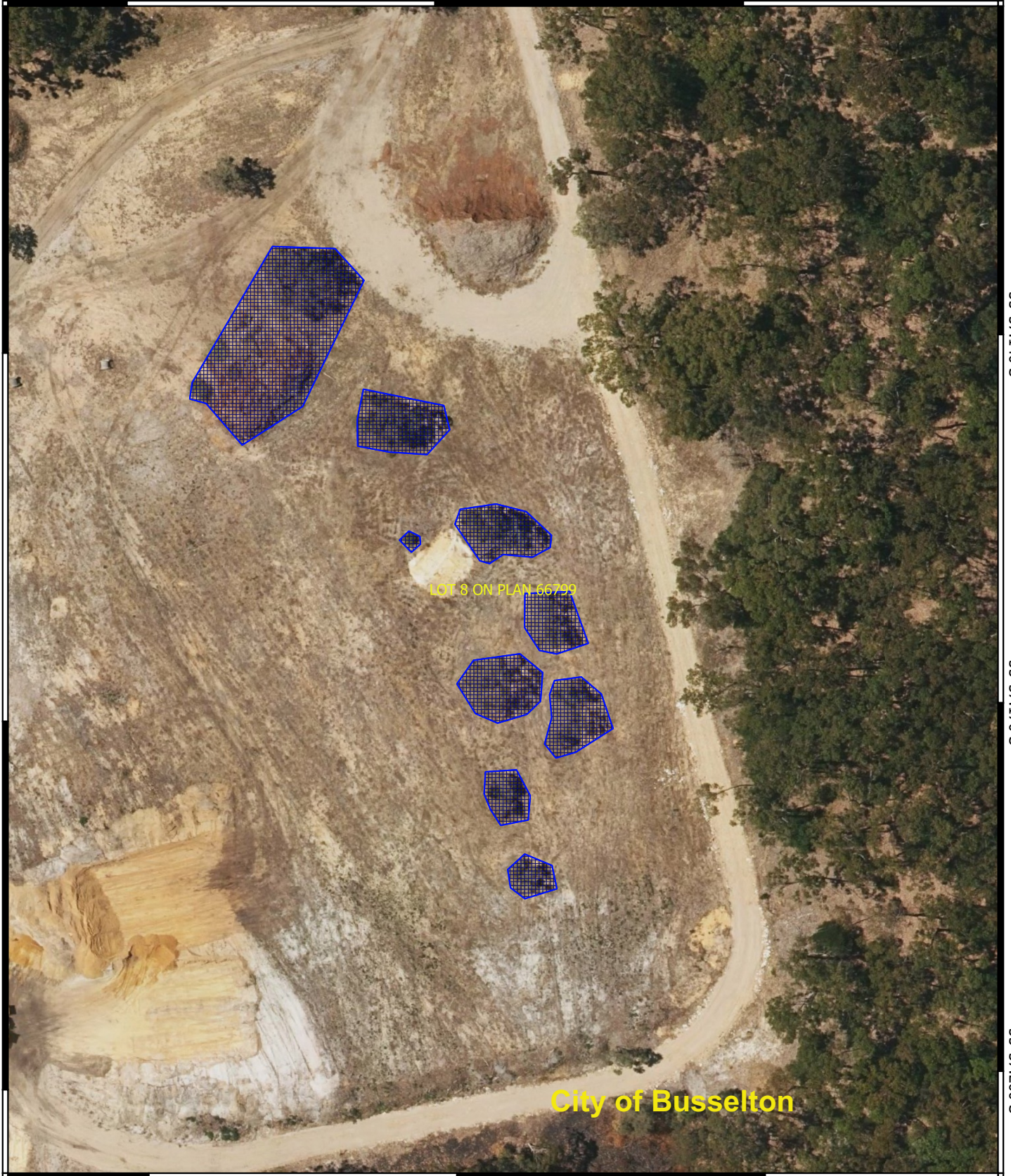
33°37.170'S

33°37.200'S

33°37.140'S

33°37.170'S

33°37.200'S





115°3.570'E

115°3.600'E

115°3.630'E

## Legend

-  CPS areas applied to clear
-  Cadastre - LGATE 218



1:800

0 10 20 m



MGA 94  
Geocentric Datum of Australia 1994



GOVERNMENT OF  
WESTERN AUSTRALIA