

Attachment 2: Maps showing location of Field 22A (116B3), adjacent land tenure, and historical clearing boundaries

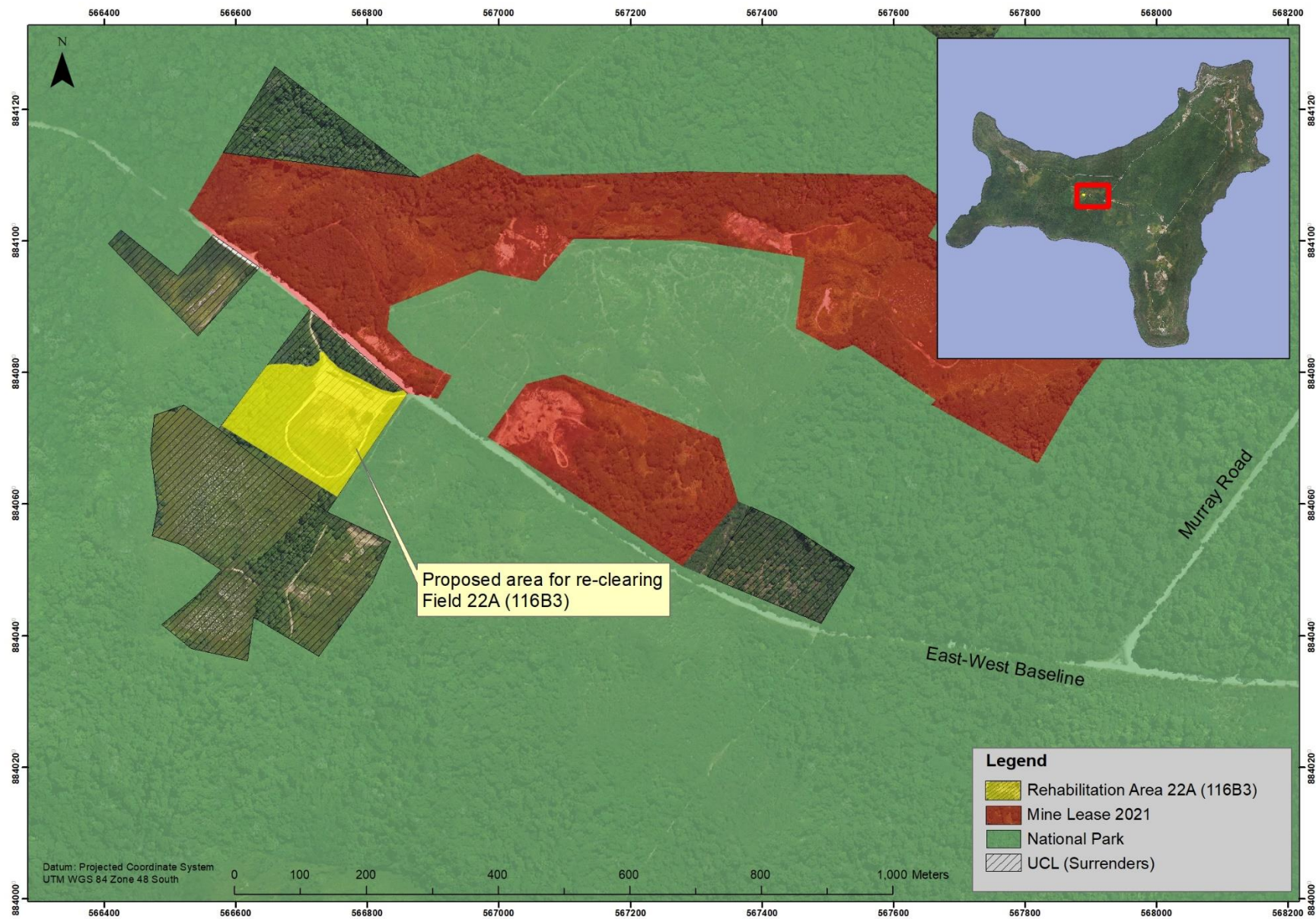


Figure 1: Map showing location of Field 22A (116B3) on Christmas Island at the landscape level, and adjacent land tenures

Attachment 2: Maps showing location of Field 22A (116B3), adjacent land tenure, and historical clearing boundaries

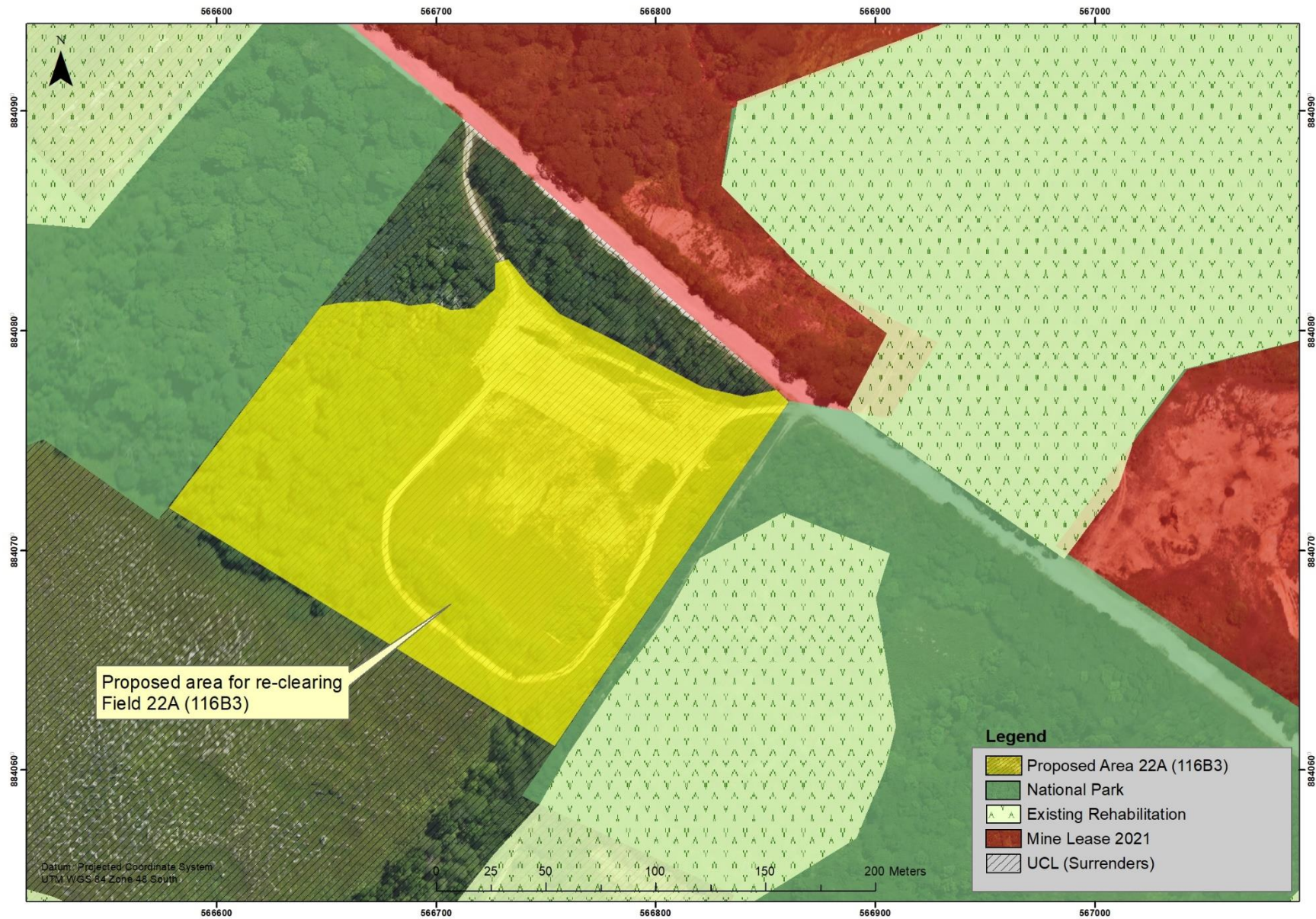


Figure 2: Map showing location of Field 22A (116B3), adjacent land tenures and existing rehabilitation sites nearby

Attachment 2: Maps showing location of Field 22A (116B3), adjacent land tenure, and historical clearing boundaries

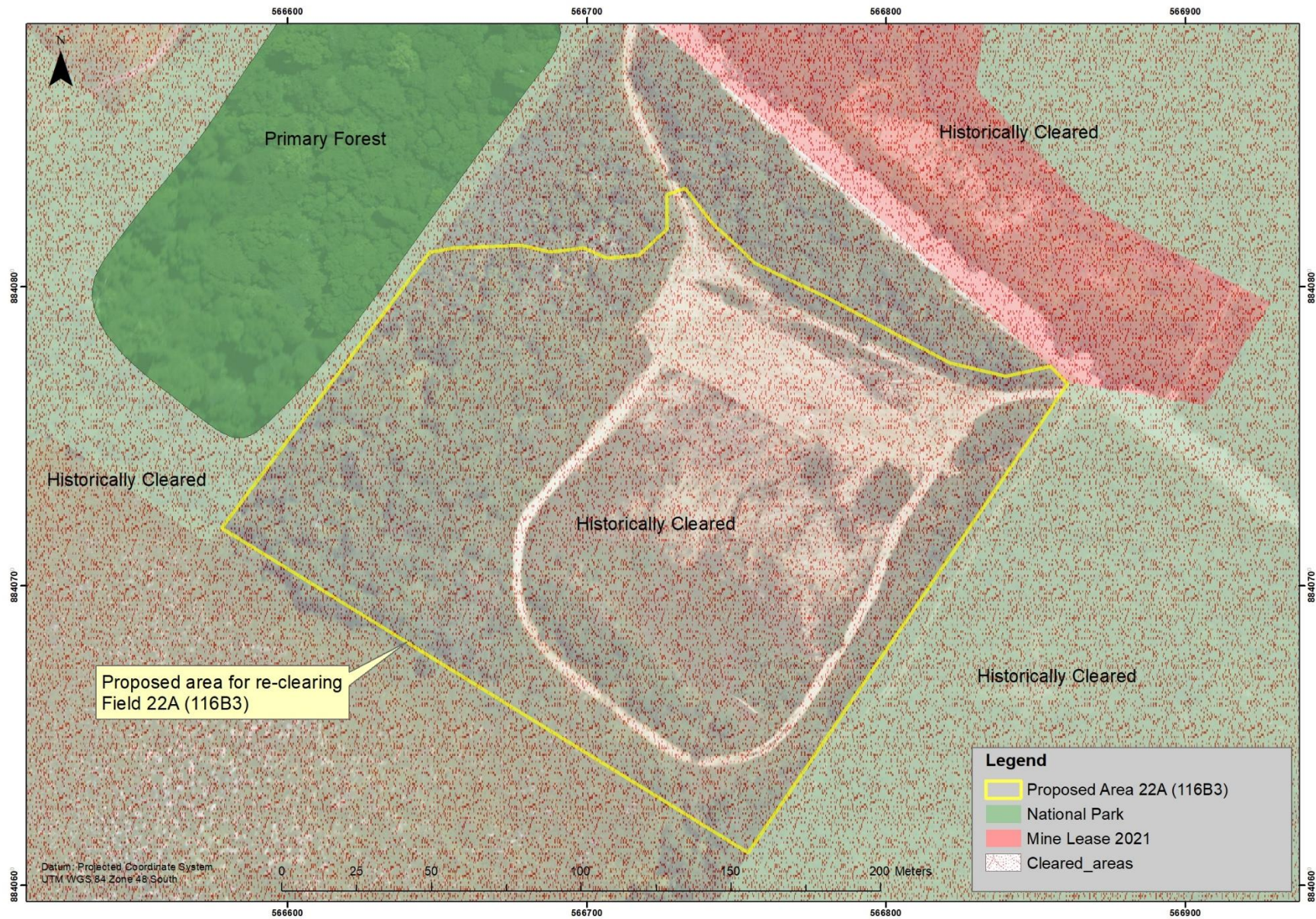


Figure 3: Map showing Field 22A (116B3) in relation to historical clearing boundaries. Note the entire site has been historically cleared and there is a patch of primary forest adjacent to the west.