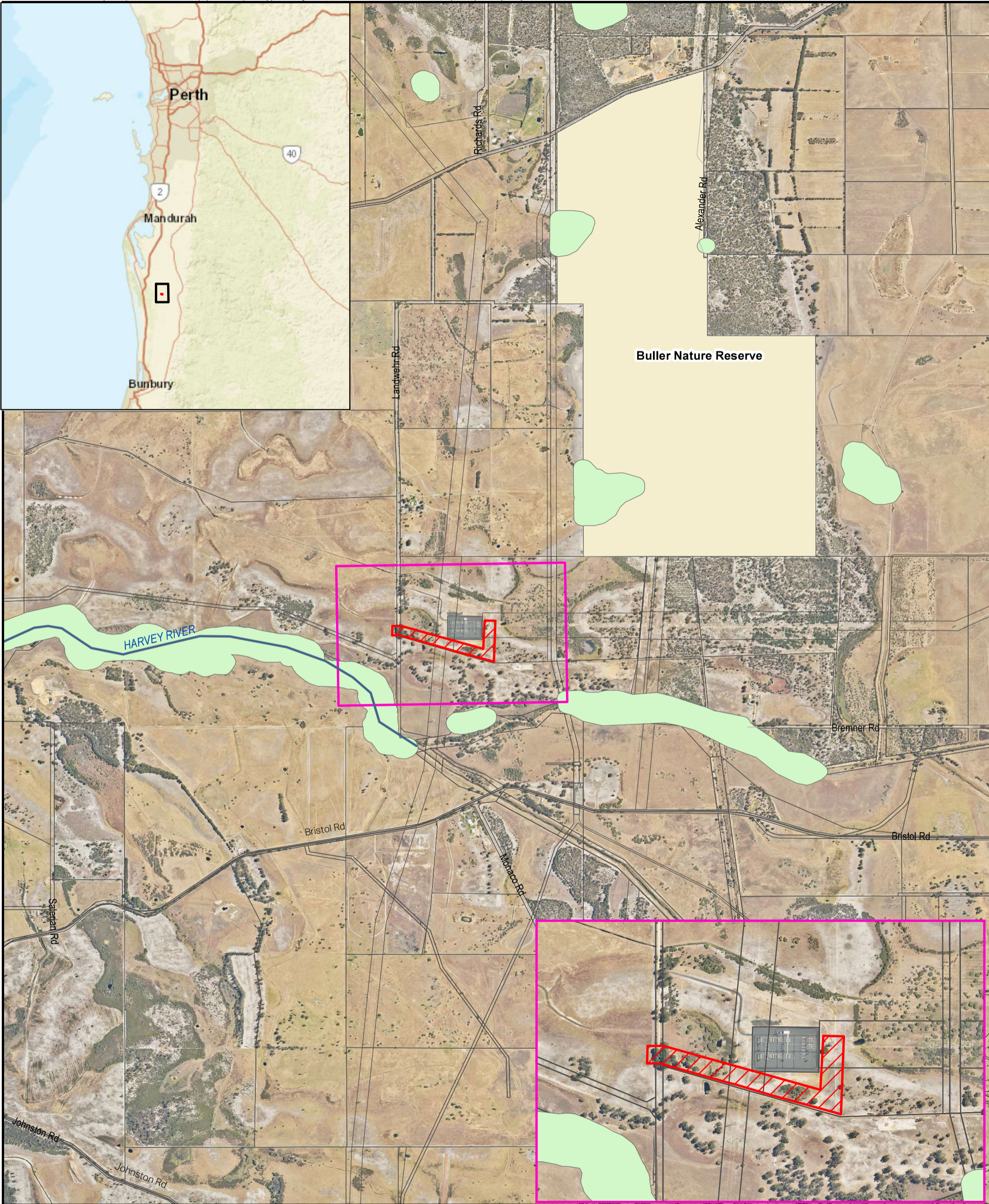


AECOM does not warrant the accuracy or completeness of information displayed in this map and any person using it does so at their own risk. AECOM shall bear no responsibility or liability for any errors, faults, defects, or omissions in the information.



PROJECT ID: [Redacted]
 CREATED BY: [Redacted]
 APPROVED BY: MD
 LAST MODIFIED: 30 JUN 2021

AECOM
 www.aecom.com

Scale: 1:22,157 (when printed at A3)
 0 100 200 400 600 800 Meters

Data sources:
 Base Data: © Based on information provided by and with the permission of the Western Australian Land Information Authority trading as Landgate (2010); Geoscience Australia; Streetpro

LEGEND

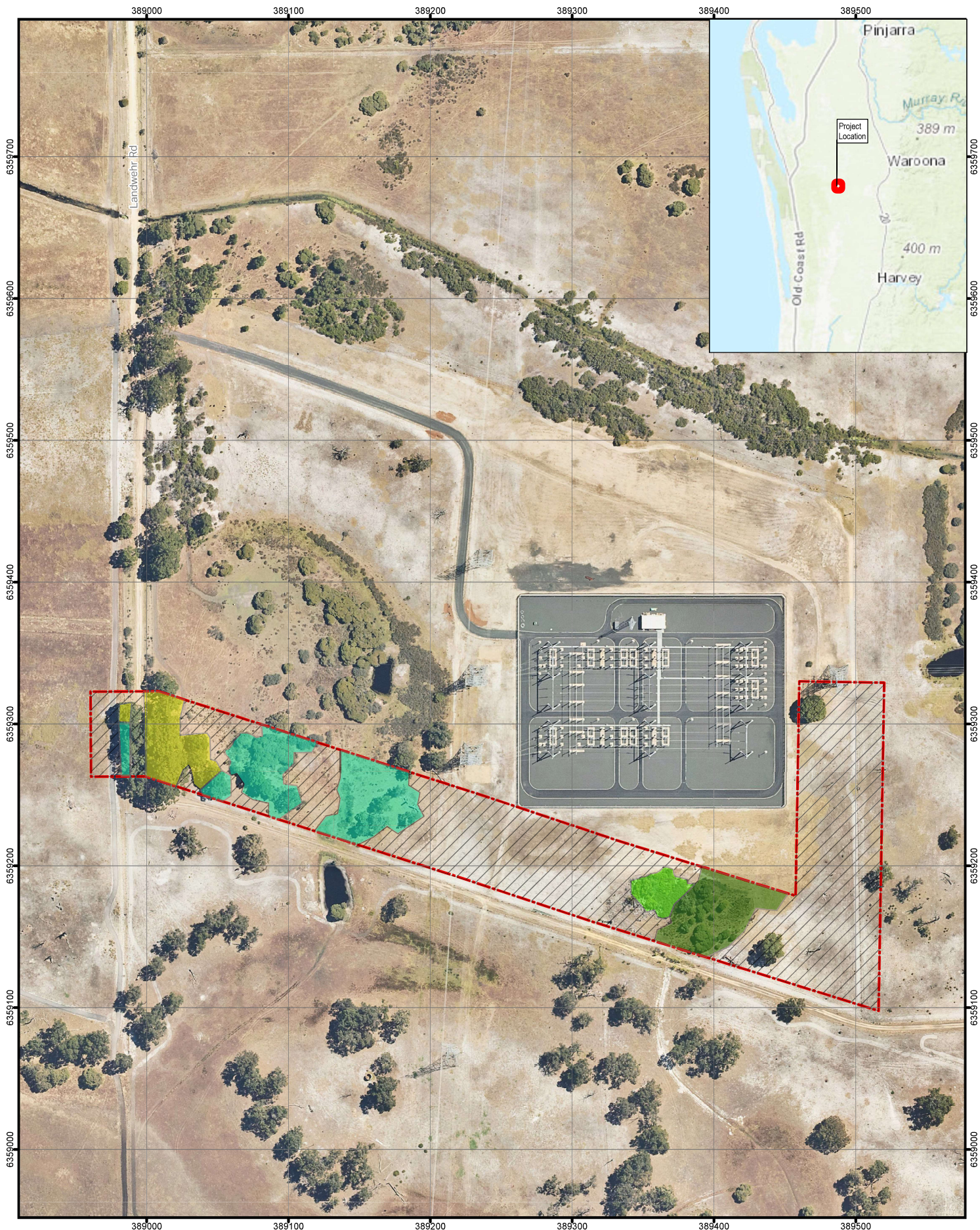
- Proposed Disturbance Footprint
- Environmentally Sensitive Areas
- Nature Reserve
- Cadastre

Project Location

SOUTH ENERGY

WAROONA ECOLOGICAL SURVEY 2021

Figure 1



PROJECT ID 60605068
 CREATED BY [Redacted]
 APPROVED BY [Redacted]
 LAST MODIFIED 17 JUN 2021

AECOM
 www.aecom.com

Datum: GDA 1994 MGA Zone 50

1:3,500
 (when printed at A4)

Data sources:
 Base Data: (c) Based on information provided by and with the permission of the Western Australian Land Information Authority trading as Landgate (2021), Geoscience Australia, Streetpro

LEGEND

Survey Area

Vegetation Community

- CcJp
- KgAa
- MrJp
- Planted
- Cleared

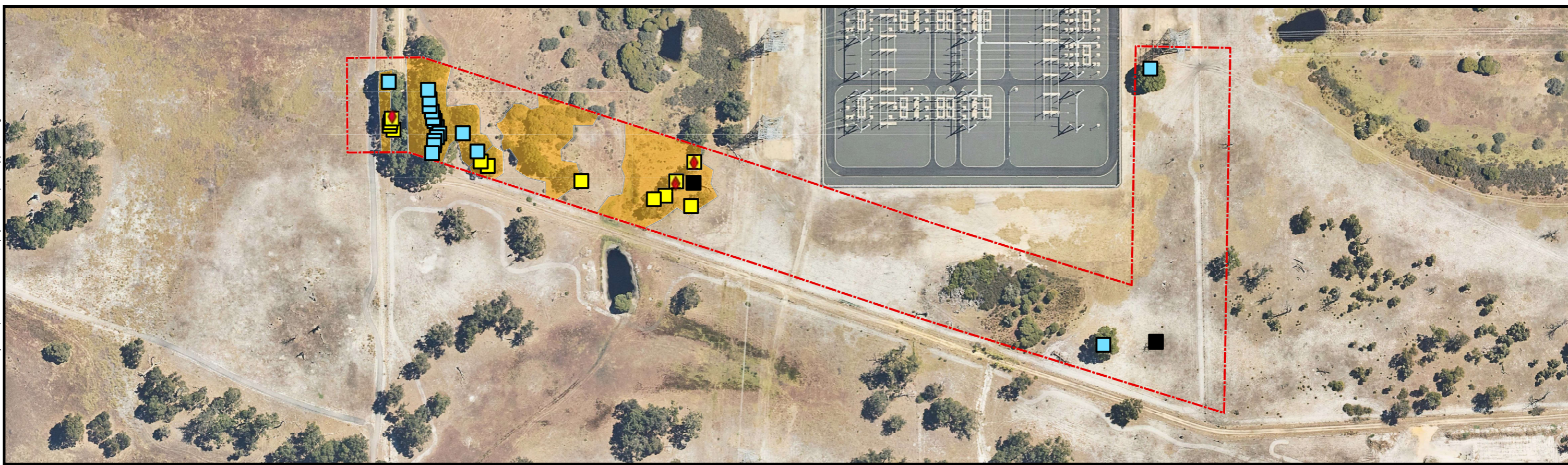
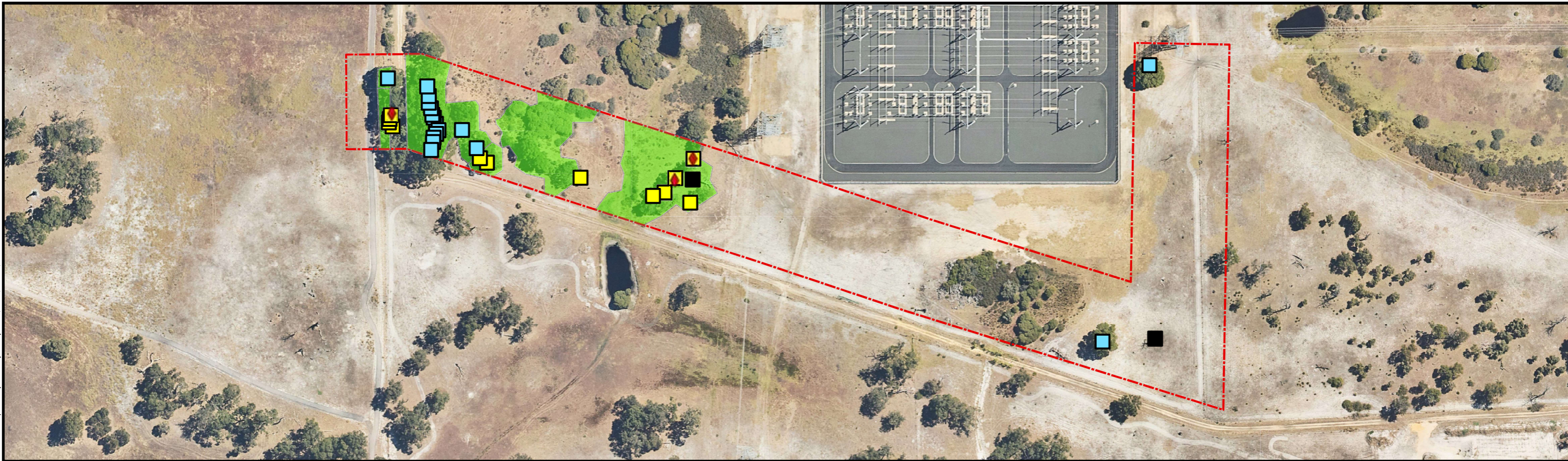
Vegetation Communities

SOUTH ENERGY

WAROONA ECOLOGICAL SURVEY 2021

Figure 2

AECOM does not warrant the accuracy or completeness of information displayed in this map and any person using it does so at their own risk. AECOM shall bear no responsibility or liability for any errors, faults, defects, or omissions in the information.



PROJECT ID 60605068
 CREATED BY [REDACTED]
 APPROVED BY [REDACTED]
 LAST MODIFIED 17 JUN 2021

AECOM
 www.aecom.com

1:2,500 (when printed at A3)
 Datum GDA 1994 MGA Zone 50

0 20 40 60 80 metres

Data sources:
 Base Data: © Based on information provided by and with the permission of the Western Australian Land Information Authority trading as Landgate (2021), Geoscience Australia, Streetpro

- LEGEND**
- ◆ Fauna Observation
 - Potential Black Cockatoo Breeding Tree
 - Marri (Corymbia calophylla)
 - Stag (old dead tree, unknown species)
 - Introduced
 - Survey Area
 - Vegetation Community Quality
Carnaby's Black Cockatoo and Baudin's Black Cockatoo
 - High Quality
 - Vegetation Community Quality
Forest Red-Tailed Black Cockatoo
 - Quality

Black Cockatoo Foraging Habitat and Potential Breeding Trees

SOUTH ENERGY
 WAROONA ECOLOGICAL SURVEY 2021

Figure
3