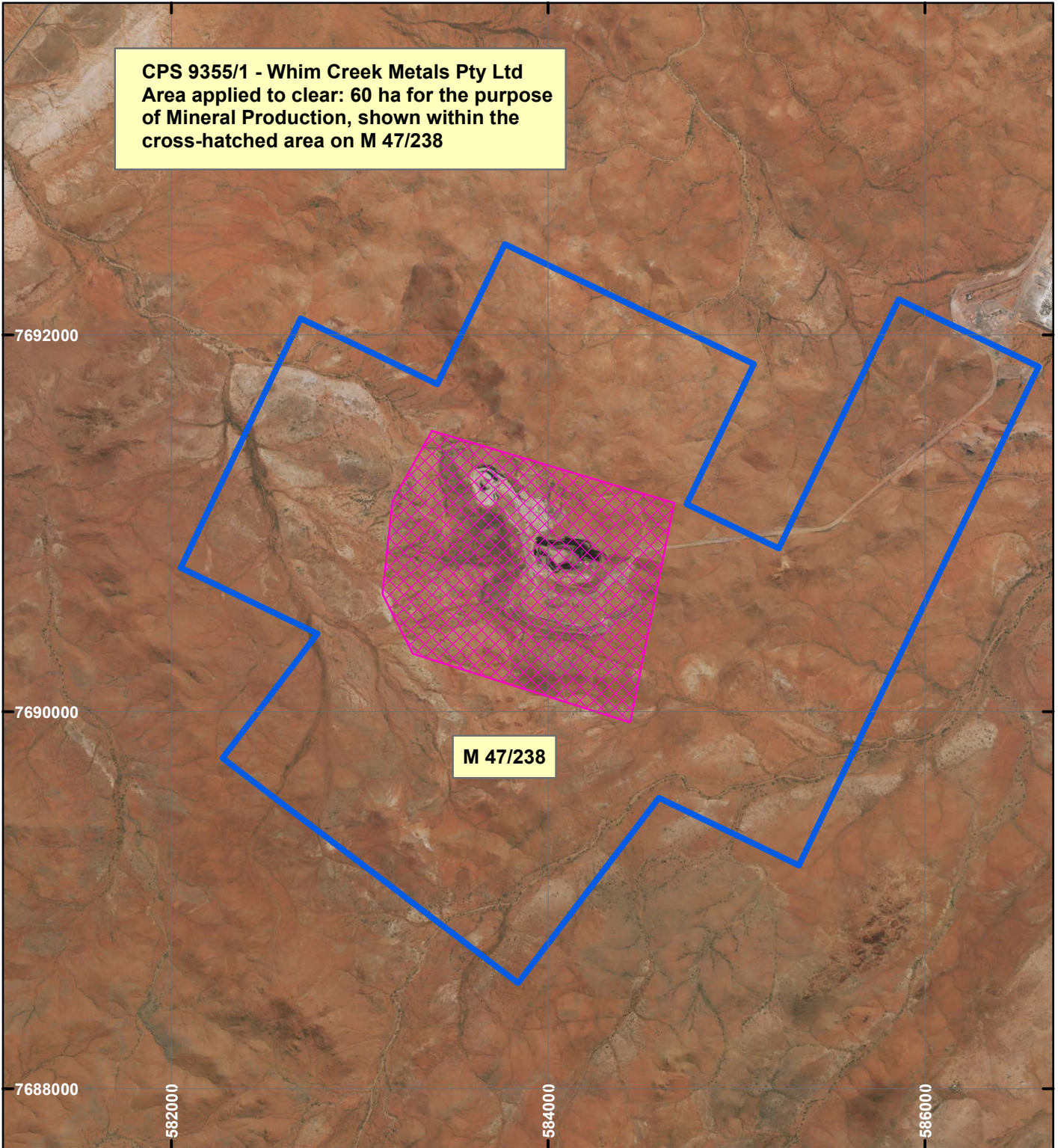


# CPS 9355/1 - Whim Creek Metals Pty Ltd

CPS 9355/1 - Whim Creek Metals Pty Ltd  
 Area applied to clear: 60 ha for the purpose  
 of Mineral Production, shown within the  
 cross-hatched area on M 47/238

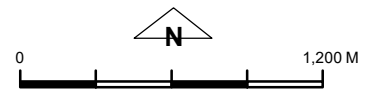


## LEGEND

 Clearing Instruments

 Mining Tenements

Orthophotography sourced from Landgate



Scale 1:30,000

(Approximate when reproduced at A4)

Geocentric Datum Australia 1994

Note: the data in this map have not been projected. This may result in geometric distortion or measurement inaccuracies.

..... Date .....

Officer with delegated authority under Section 20 of  
 the Environmental Protection Act 1986

Information derived from this map should be  
 confirmed with the data custodian acknowledged  
 by the agency acronym in the legend.



WA Crown Copyright 2002