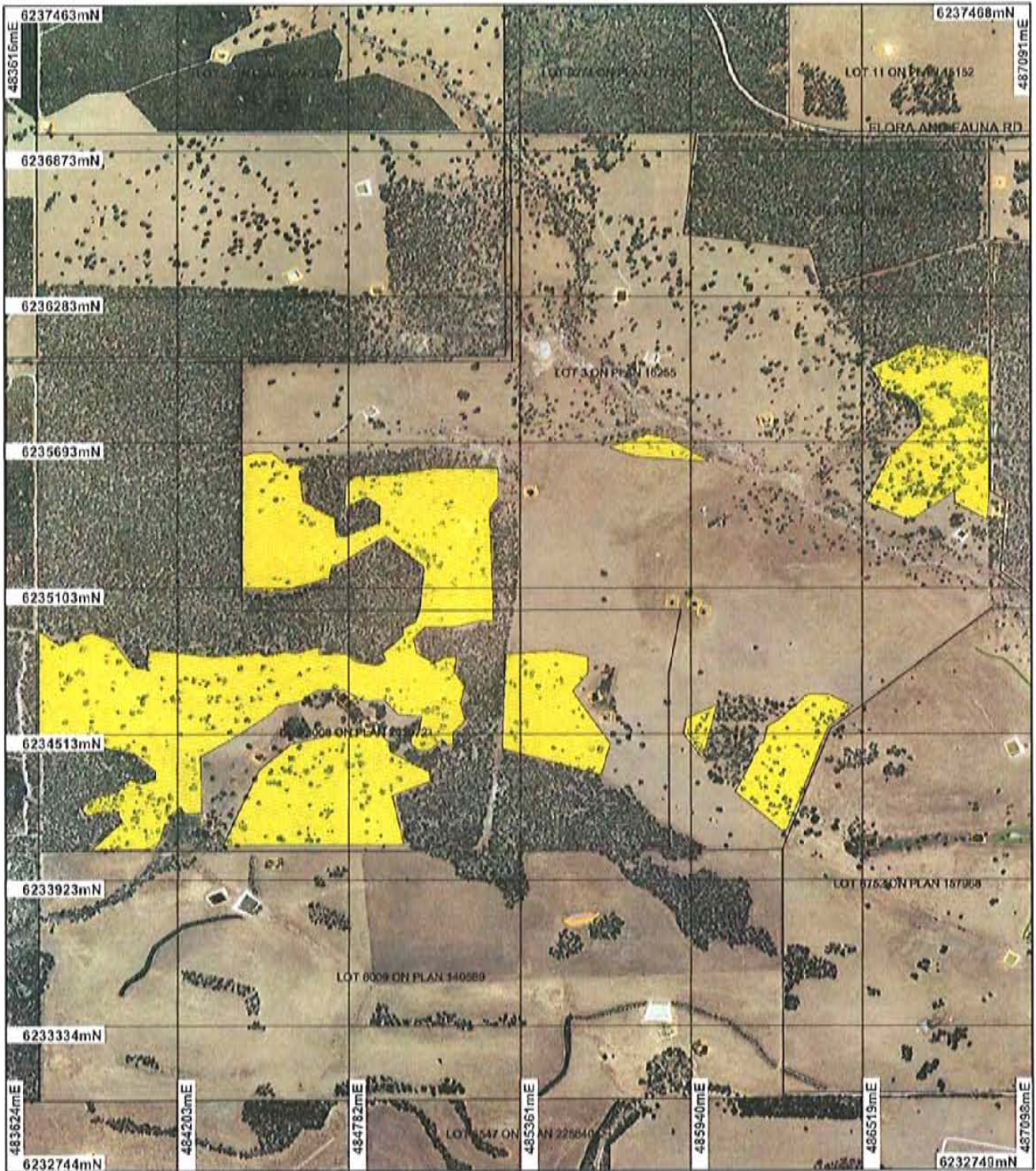


# Plan 937/1



## LEGEND

### Hydrography, linear - DOE 1/2/04

- Area Subject to Inundation
- Braided Stream Area
- Claypan
- Coastal Waterline
- Dam Wall
- Dam Wall - carrying road
- Drain - major
- Drain - minor
- Earth Dam
- Estuarine
- Flood Limit Area (ceal)

- Flow Direction Arrow
- Foreshore Flats or Sandbank
- Groyne Area
- Lake - artificial
- Lake - non-perennial
- Lake - perennial
- Levee Bank
- Marine Construction - wharf/jetty
- Marsh Area
- Natural Pool - non-perennial
- Natural Pool - perennial
- Reef Area
- Rock Awash Offshore
- Sump (cont)

- Supply Channel
- Swamp - non-perennial
- Swamp - perennial
- Tidal Flat
- Wash Area
- Water Reservoir
- Watercourse - Indefinite
- Watercourse - major, non-perennial
- Watercourse - major, perennial
- Watercourse - minor, non-perennial
- Watercourse - minor, perennial
- Watercourse Bank - non-perennial
- Watercourse Bank - perennial
- Waterfalls

### Clearing Instruments

- Area Approved to Clear
- Road Centrelines - DLI 1/3/04
- Cadastral - DLI
- Bussellton 50cm Orthomosaic - DLI 03
- Tonerbridge 50cm Orthomosaic - DLI04



Scale 1:21642  
(Approximate when reproduced at A4)

Geocentric Datum Australia 1994

Note: The data in this map have not been inspected. This may result in geometric distortion or measurement inaccuracies.

Date 23/2/07  
Kim Taylor

Officer with delegated authority under Section 23 of the Environmental Protection Act 1986

Information derived from this map should be confirmed with the data custodian acknowledged by the agency acronym in the legend.

