

ATTACHMENT 3 – City of Joondalup Maps

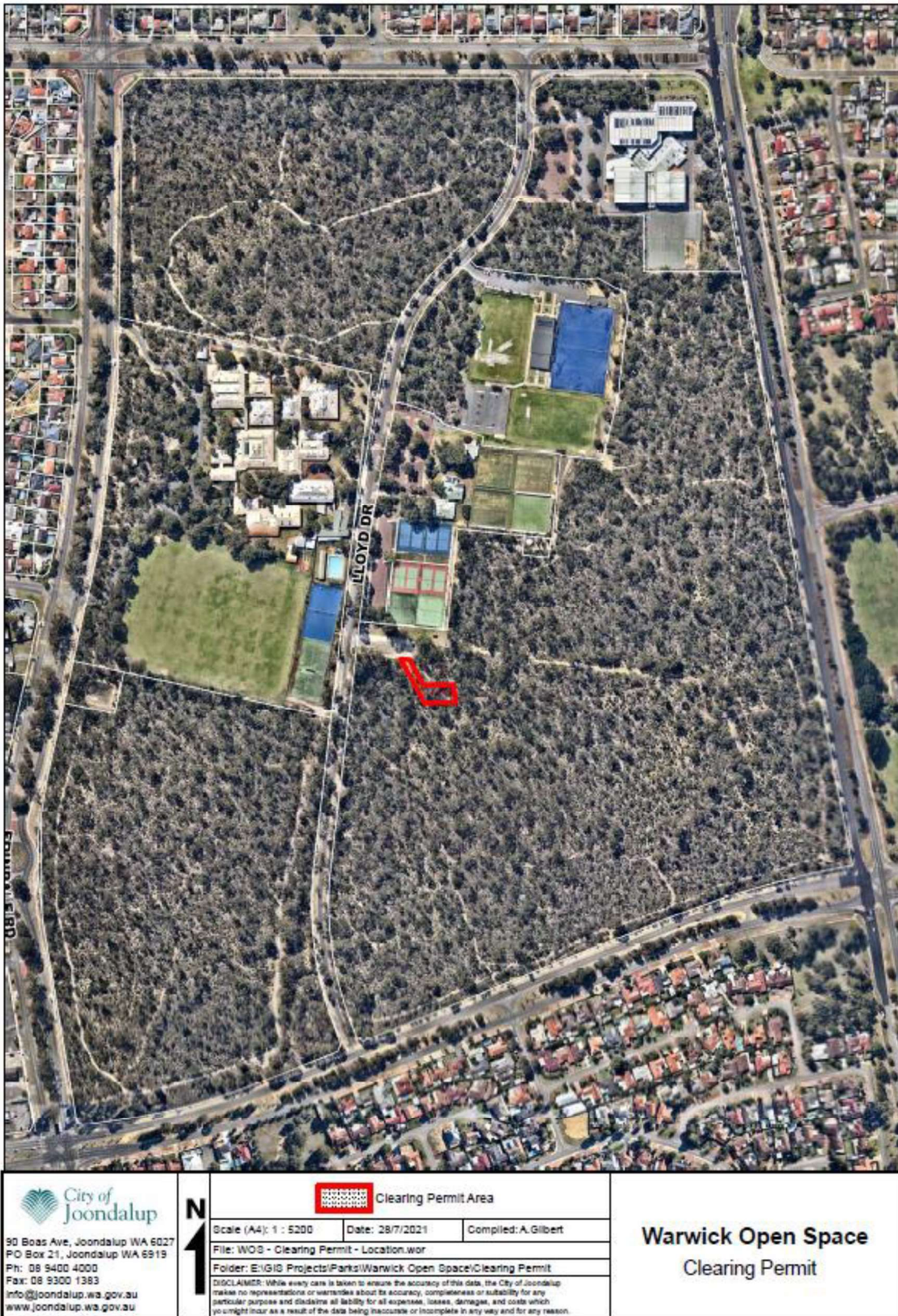


Figure 3a – A map with a north arrow clearly identifying the areas of vegetation proposed to be cleared.



Figure 3b – Eco Logical (2019) Flora Survey Threatened Ecological Communities (TEC) – Banksia Woodlands.



Figure 3c – DBCA Indicative Threatened Ecological Communities (TEC) – Banksia Woodlands.

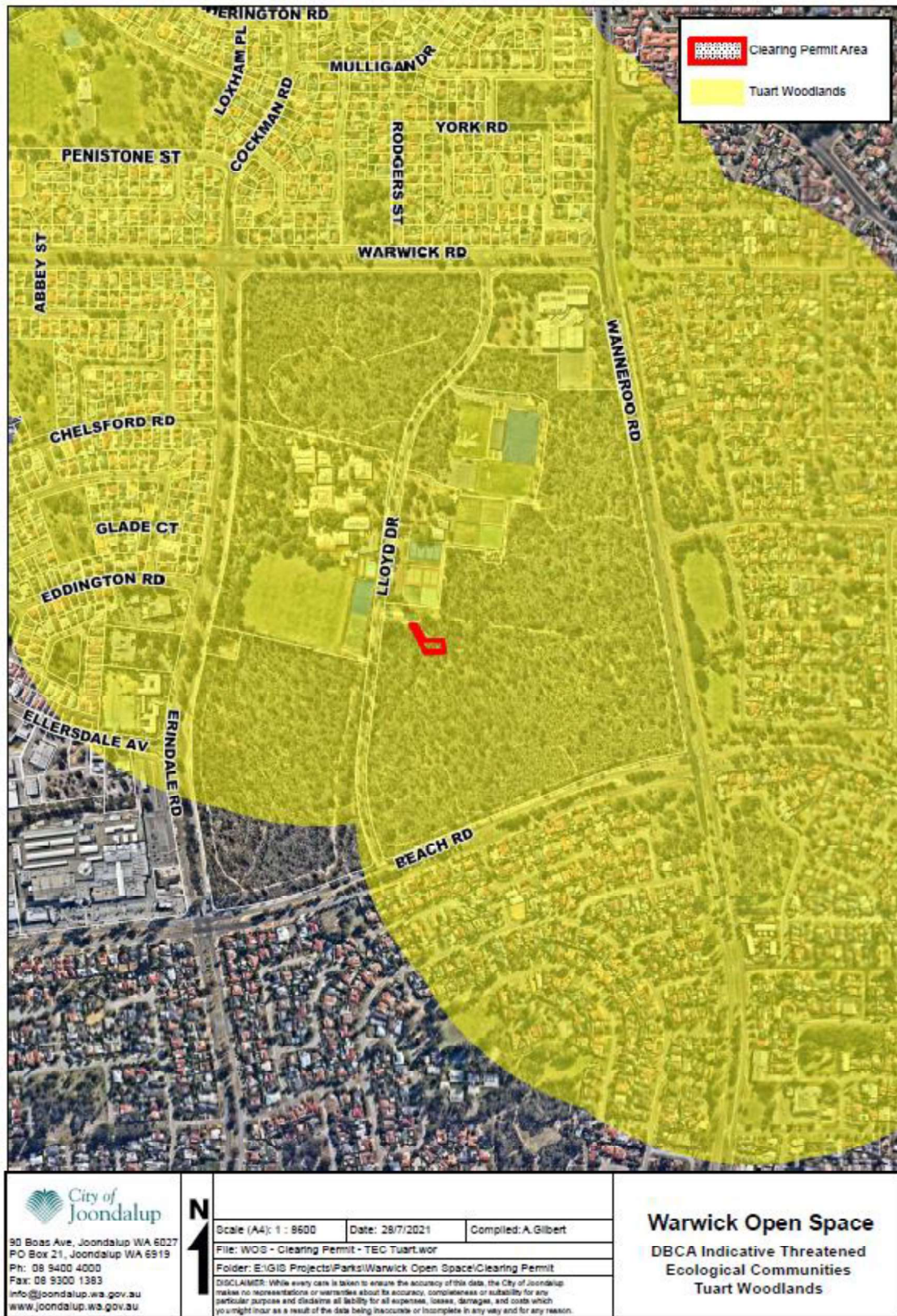


Figure 3d – DBCA Indicative Threatened Ecological Communities (TEC) – Tuart Woodlands.

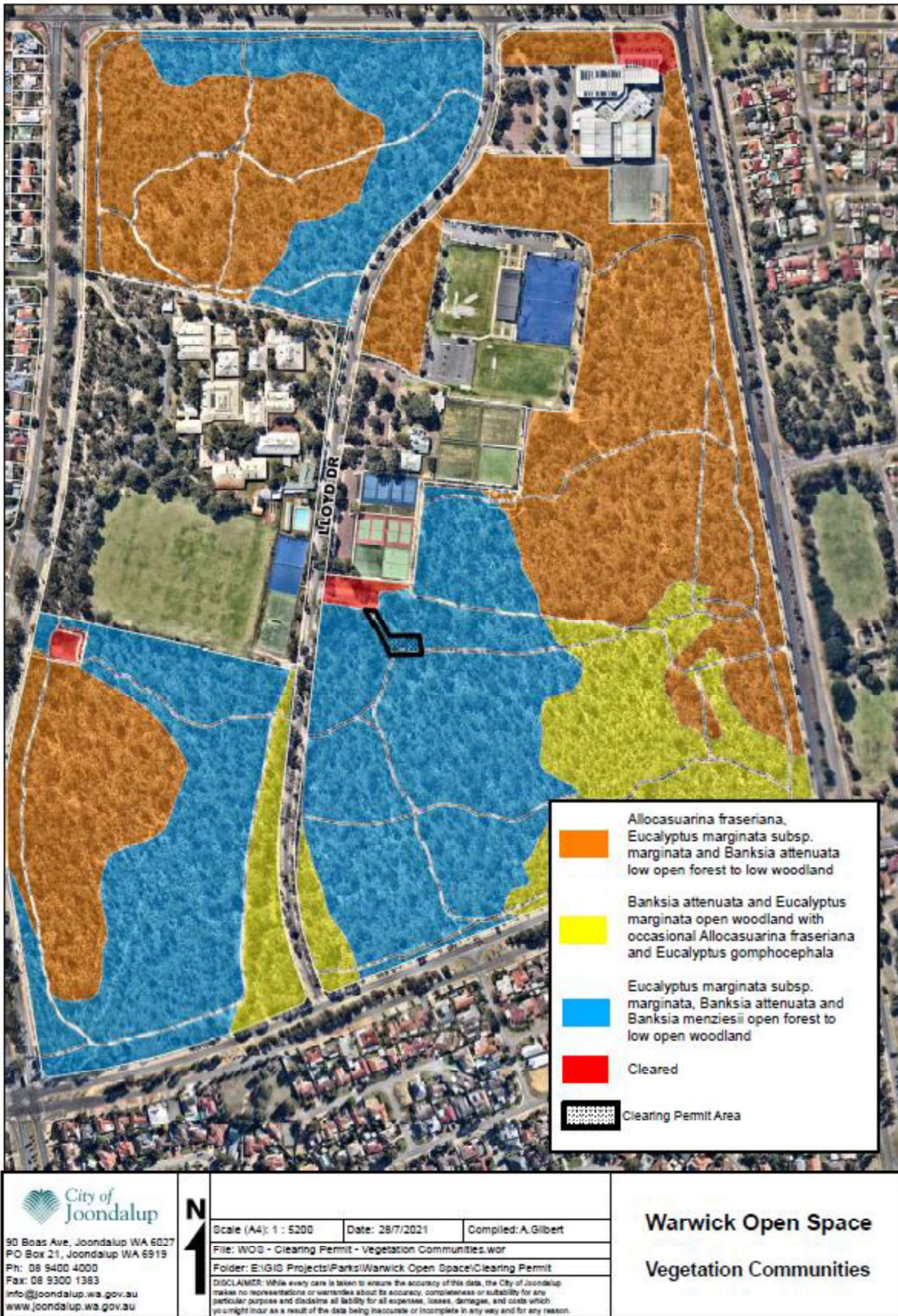


Figure 3f – Warwick open space vegetation communities from the Eco Logical (2019) flora survey. The Clearing Permit Area (0.1138ha) is displayed within the Figure and is contained within Vegetation Community type – *Eucalyptus marginata* subsp. *marginata*, *Banksia attenuata* and *Banksia menziesii* open forest to low open woodland.

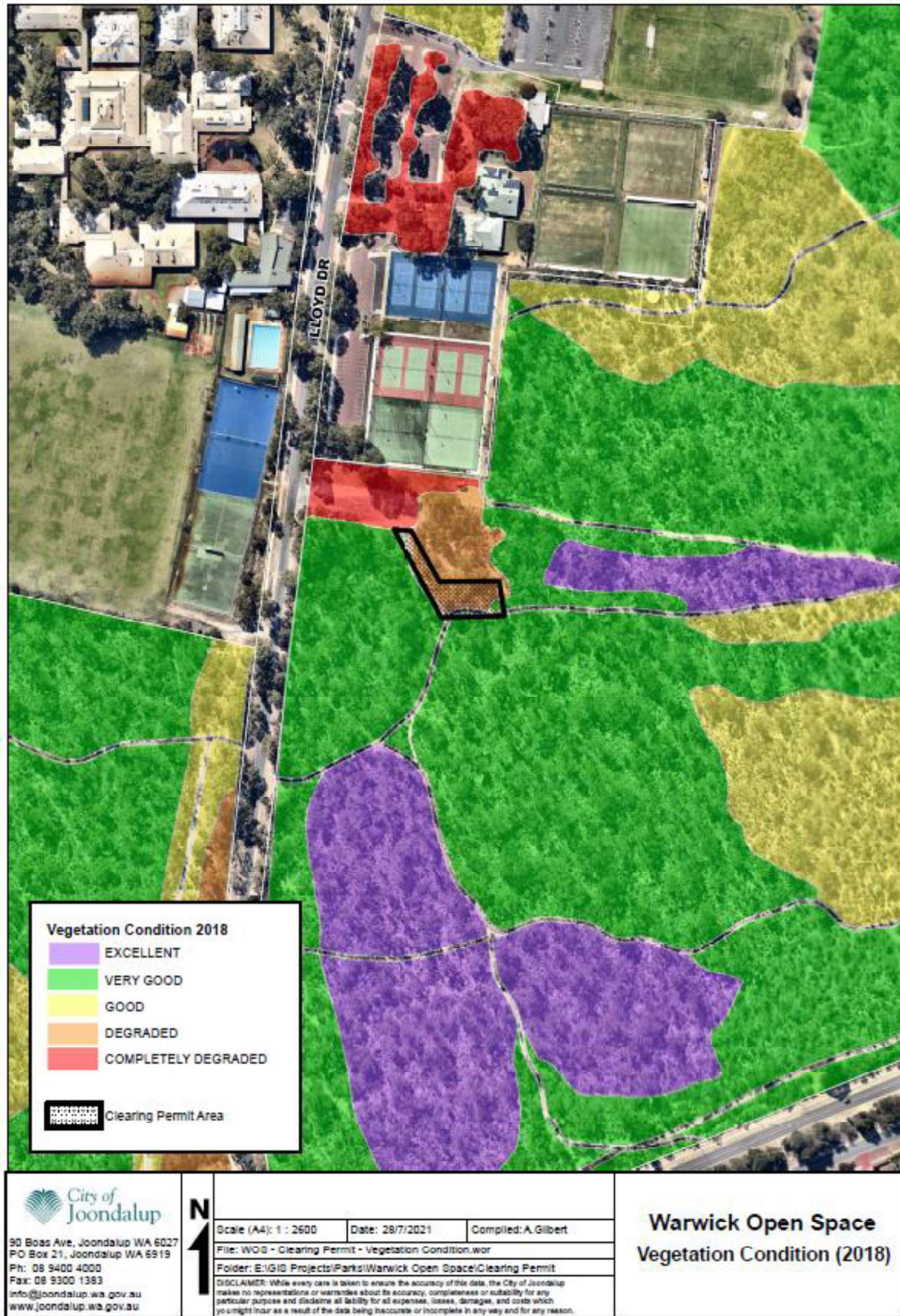


Figure 3g - Warwick open space vegetation condition from the Eco Logical (2019) flora survey and vegetation condition assessment. The Clearing Permit Area (0,1138ha) is displayed within in the Figure, with the condition breakdown within this footprint as follows: Degraded – 844m², Very Good – 126m² and Cleared (paths) 169m².

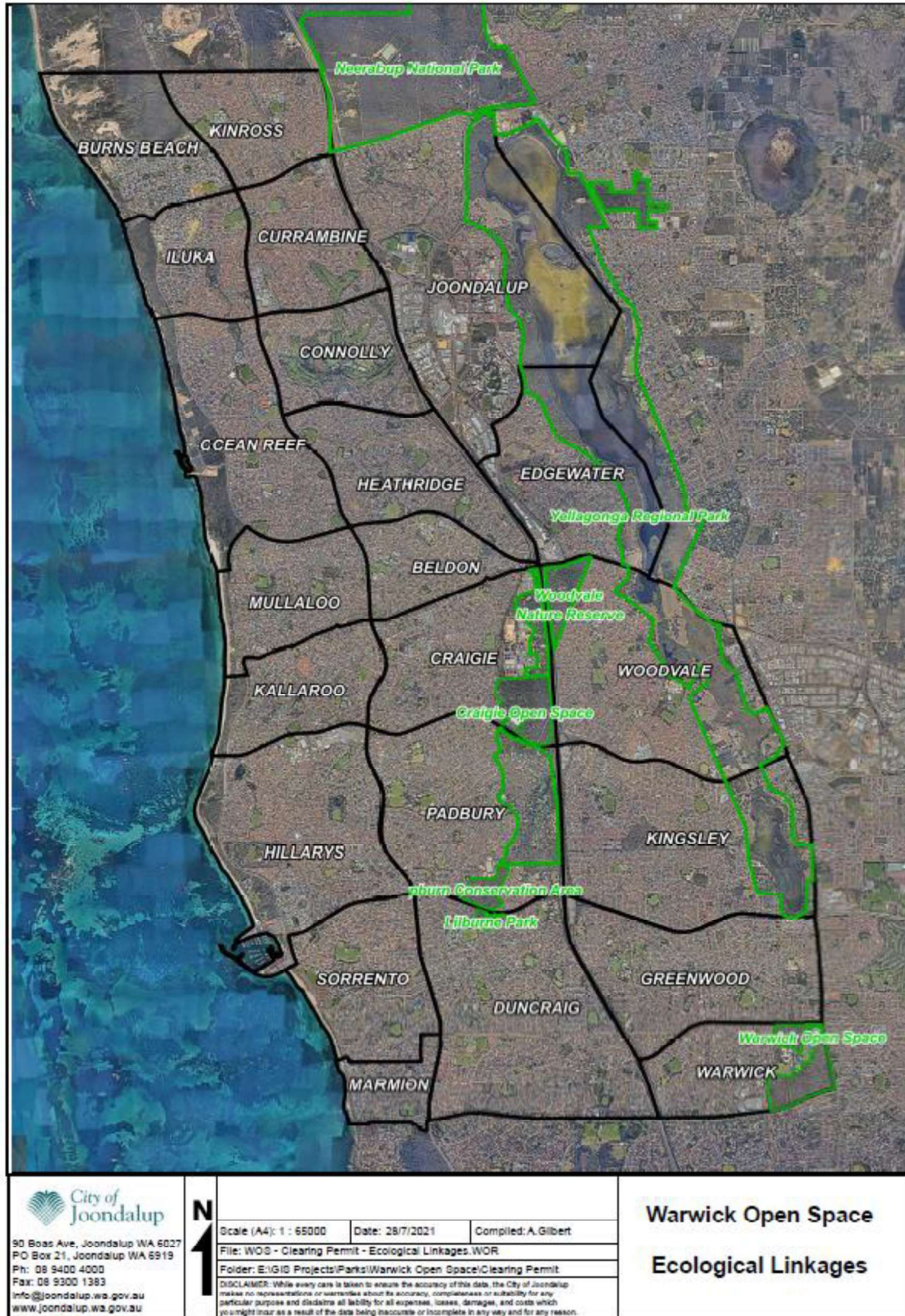


Figure 3f – The Perth Biodiversity Project Ecological Linkage are displayed in this figure, inclusive of Warwick Open Space to the south of the map.

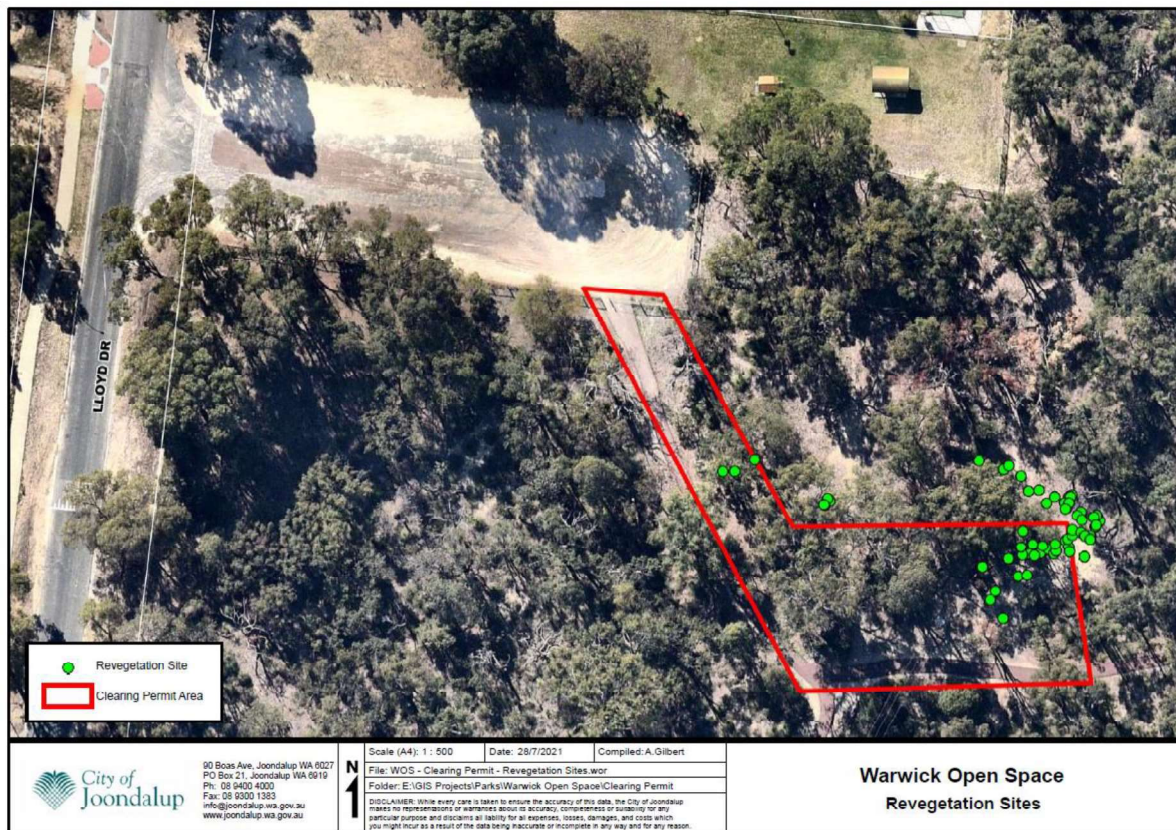


Figure 3g – Friends of Warwick Bushland Revegetation sites in the vicinity of the project area. Please note there is some GPS error displayed in the data collected.