



## THE AURENNE GROUP OF COMPANIES

# Memo

**To** Flora Officer, Species & Communities Branch DBCA  
**From** Vanessa Clarke, Environmental Superintendent, Aurene Mining  
**CC**  
**Date** 17 March 2022  
**Re** *Jacksonia lanicarpa* P1

---

**Attn: Principal Botanist, Species & Communities Branch, DBCA**

### Introduction

Aurene Mining has previously provided preliminary survey results for Priority 1 flora species, *Jacksonia lanicarpa*. These results, which included memo, data, figures were provided (email to Flora Data) on 25 October 2021; and supporting photographs and specimens were submitted to the WA Herbarium (vouchered specimen Perth 09431659).

As advised in 2021, 1198 individuals were recorded from the Mt Ida Gold Project tenements at Bottle Creek. It was known that the potential habitat for this species was ubiquitous locally and that individuals occurred in high numbers (often as the dominant understorey) in preferred habitat.

To further local knowledge of distribution and numbers, additional survey was commissioned by Aurene in early 2022.

### Purpose

This memo is provided to inform DBCA of additional numbers and distribution of the local population of *Jacksonia lanicarpa* P1 at the Mt Ida Gold Project at Bottle Creek, Ularring, WA.

This information will also be utilised for Project planning, impact assessment, and compliance with Native Vegetation Clearing Permit (NVCP) CPS 9383/1, as administered by DMIRS.

### Methods

Two highly experienced botanists, Brian Morgan and Jeni Alford were engaged to undertake targeted survey in early 2022. The targeted survey was conducted over five days by driving the main arterial tracks within the Bottle Creek area and stopping to undertake systematic foot traverses prioritising proposed disturbance areas (according to the submitted Mining Proposal

Reg ID 101557 and shown in **Figure 1**); and to target habitat that is not proposed for disturbance.

Both botanists were made familiar with the species prior to survey and did not encounter difficulty in identifying the species in the field, based on the distinct colour and morphology of the plants. Records were made using handheld GPS and included points and track logs.

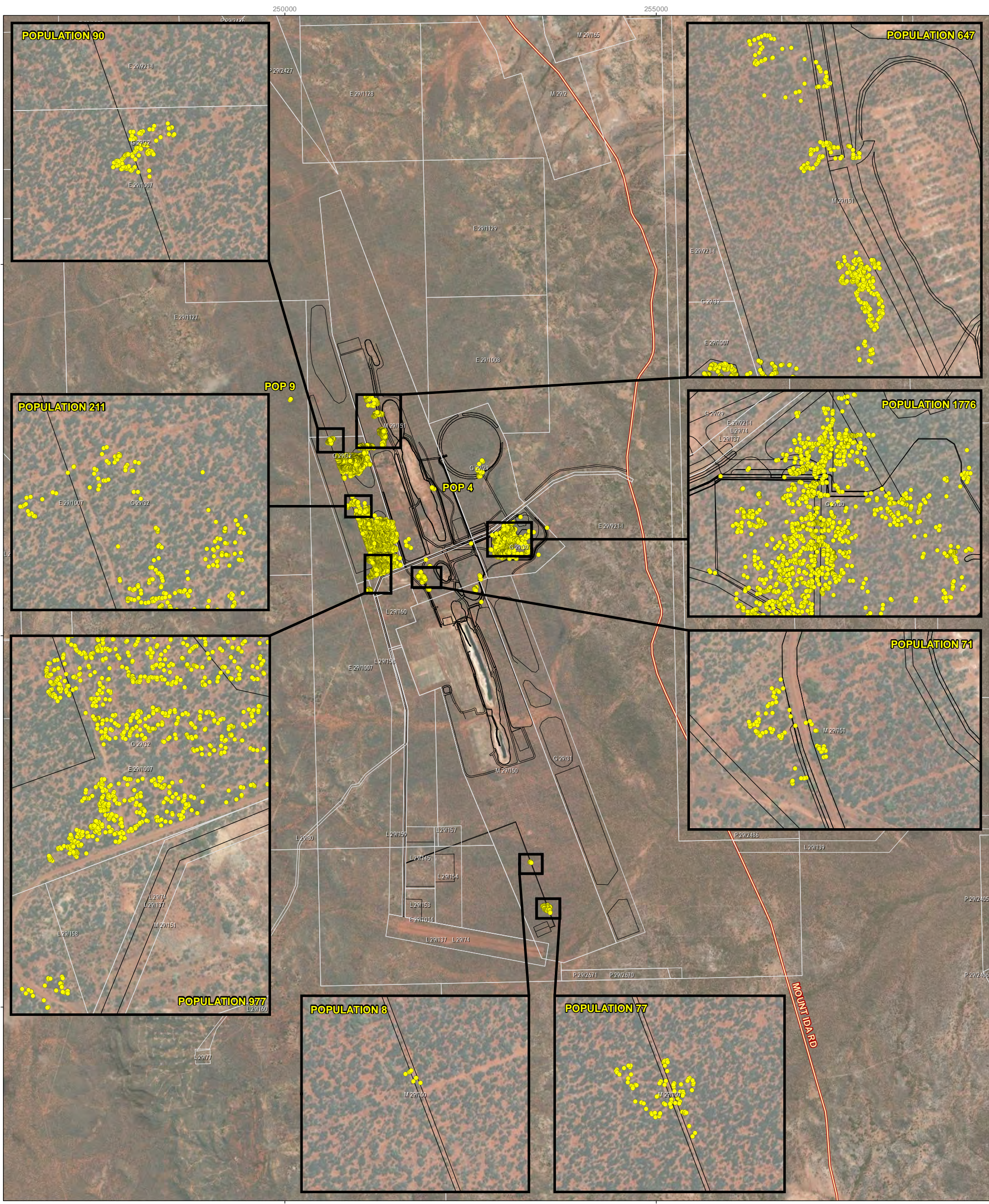
## Results

Over 10,000 individuals were counted over 10 person days. The results per tenement are presented in **Table 1** and distributionally illustrated in **Figure 1**.

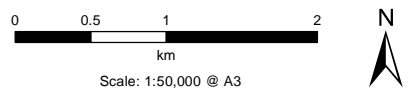
**Table 1** includes the previous known records of: four plants recorded at three locations during May 2021 survey (Phoenix 2021); ~1,200 plants in 10 locations during targeted survey over 2 days (29-30 September 2021); V. Clarke, licence FB62000164).

**Table 1 *Jacksonia lanicarpa* records at Bottle Creek (Mt Ida Gold Project)**

| Tenement           | Type                  | Holder                 | Area (ha) | Count         |
|--------------------|-----------------------|------------------------|-----------|---------------|
| E 29/1007          | EXPLORATION LICENCE   | AURENNE MIT PTY LTD    | 3.00      | 26            |
| E 29/1127          | EXPLORATION LICENCE   | AURENNE MIT PTY LTD    | 5.00      | 27            |
| G 29/29            | GENERAL PURPOSE LEASE | AURENNE MIT PTY LTD    | 132.56    | 47            |
| G 29/30            | GENERAL PURPOSE LEASE | AURENNE MIT PTY LTD    | 70.26     | 1821          |
| G 29/32            | GENERAL PURPOSE LEASE | AURENNE MIT PTY LTD    | 226.24    | 8104          |
| L 29/137           | MISCELLANEOUS LICENCE | AURENNE MIT PTY LTD    | 99.79     | 2             |
| L 29/158           | MISCELLANEOUS LICENCE | AURENNE MIT PTY LTD    | 42.66     | 26            |
| M 29/150           | MINING LEASE          | AURENNE MT IDA PTY LTD | 571.30    | 98            |
| M 29/151           | MINING LEASE          | AURENNE MT IDA PTY LTD | 456.65    | 620           |
| <b>TOTAL COUNT</b> |                       |                        |           | <b>10,771</b> |



- Legend**
- Tenement
  - Disturbance Envelope
  - Road
  - *Jacksonia lanicarpa* P1 Location



- NOTE THAT POSITION ERRORS CAN BE >5M IN SOME AREAS

**LOCALITY**



| CREATED BY  | JOB  | DATE       | REVISION |
|-------------|------|------------|----------|
| ENVIRONMAPS | MIGP | 17/03/2022 | 0        |

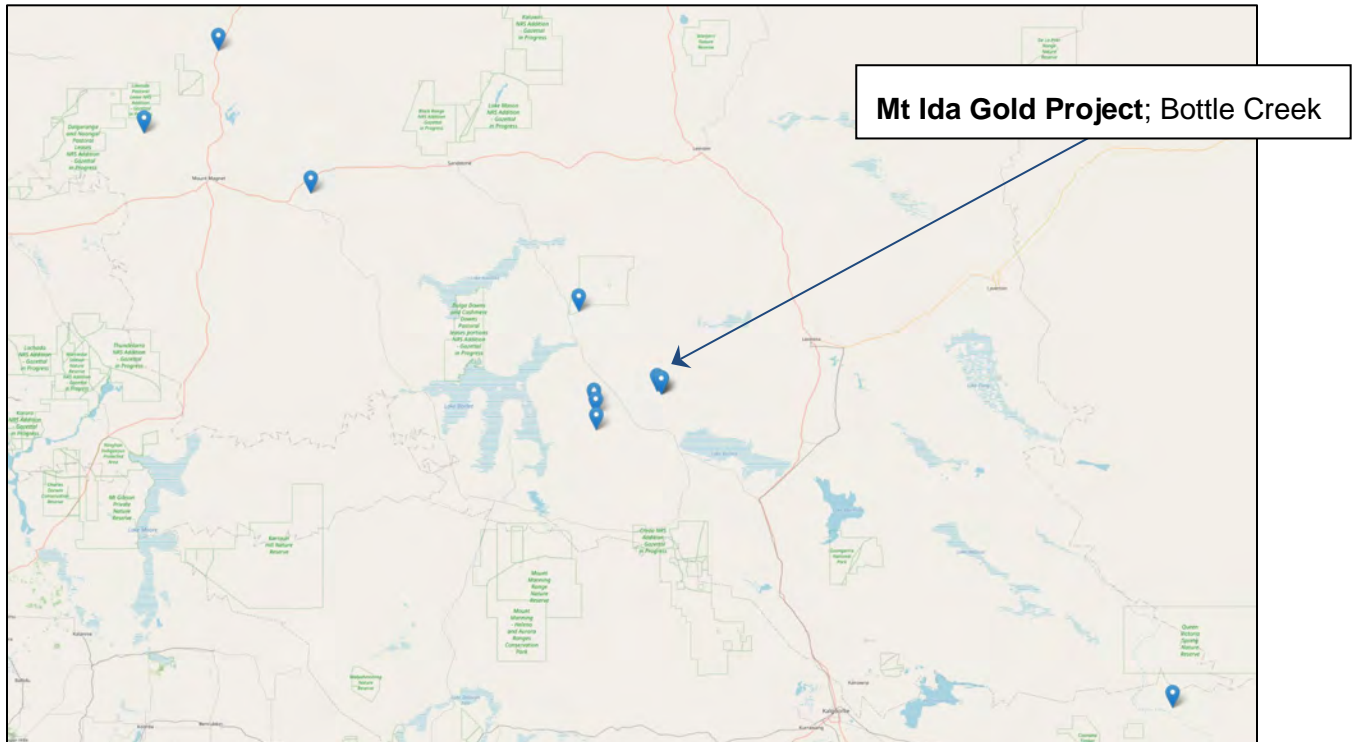
**AURENNE MINING**  
Mt Ida Gold Project

**PRIORITY FLORA**  
**JACKSONIA IANICARPA P1**  
**2022 SURVEY RESULTS**

- TENEMENTS SOURCED DPIRD 2021  
- IMAGERY SOURCED OPEN SOURCE

## Discussion

FloraBase (DBCA 2022) notes a NW-SE linear distribution of ~800 km from west of Mount Magnet to near Cundeelee Mission (**Figure 2**) based on 11 collections held at the WA Herbarium.



**Figure 2 NW-SE linear distribution of *J. lanicarpa* (FloraBase 2022)**

Notes provided with the WA Herbarium collections states that plants may occur either infrequently or in their thousands. Survey within the Bottle Creek tenements supports this observation with plants occurring either occasionally or at low densities in areas of mulga woodland that are higher (and drier) in the landscape compared to water gaining sites (low in the landscape) where it may be the dominant understorey with thousands of individuals occurring. Mulga plains are an extensive habitat of both the local and regional area, which is supported by the linear distribution of collections noted on FloraBase.

### Impact Assessment; Mt Ida Gold Project

**Figure 1** shows the current recorded locations, the mining and exploration tenements, and the proposed Disturbance Envelope for the Bottle Creek proposed Mt Ida Gold Project gold mine. Based on the current recorded locations, which remain a vast under-representation of the total number within the local area, an impact assessment is provided in **Table 2**.

The potential impact to the local population based on current (incomplete) census is ~20%. Survey of potential habitat suggests the population extent and numbers are much higher than recorded and therefore the proportional take in reality will be much lower.

**Table 2 Bottle Creek impact assessment**

| Tenement      | Type                  | Holder                 | Area (ha) | Count         | Proposed take |
|---------------|-----------------------|------------------------|-----------|---------------|---------------|
| E 29/1007     | EXPLORATION LICENCE   | AURENNE MIT PTY LTD    | 3.00      | 26            | 0             |
| E 29/1127     | EXPLORATION LICENCE   | AURENNE MIT PTY LTD    | 5.00      | 27            | 0             |
| G 29/29       | GENERAL PURPOSE LEASE | AURENNE MIT PTY LTD    | 132.56    | 47            | 47            |
| G 29/30       | GENERAL PURPOSE LEASE | AURENNE MIT PTY LTD    | 70.26     | 1821          | 1821          |
| G 29/32       | GENERAL PURPOSE LEASE | AURENNE MIT PTY LTD    | 226.24    | 8104          | 0             |
| L 29/137      | MISCELLANEOUS LICENCE | AURENNE MIT PTY LTD    | 99.79     | 2             | 0             |
| L 29/158      | MISCELLANEOUS LICENCE | AURENNE MIT PTY LTD    | 42.66     | 26            | 10            |
| M 29/150      | MINING LEASE          | AURENNE MT IDA PTY LTD | 571.30    | 98            | 13            |
| M 29/151      | MINING LEASE          | AURENNE MT IDA PTY LTD | 456.65    | 620           | 100           |
| <b>TOTALS</b> |                       |                        |           | <b>10,771</b> | <b>1,991</b>  |

Project planning has already applied the mitigation hierarchy of avoid, minimise, mitigate by moving infrastructure areas to either avoid or minimise clearing individuals or subpopulations. Some areas, such as open pits and processing are not able to be relocated based on the viability of the Project.

### Conservation Status

The proposed taking of individuals within the Bottle Creek local population is not likely to adversely impact the conservation status of this species. The proposed take under the existing NVCP CS 9383/1 is up to 338 individuals from a known local population of ~1200.

A request to amend NVCP CPS 9383 is to be submitted to DMIRS to facilitate the development of the Mt Ida Gold Project to increase the local take up to 2,000 over the next five years, from a currently known (but still underestimated) local populations of 10,771 individuals.

Given the ubiquity of habitat extends over most of the Project tenements, further survey is proposed for later in 2022, and over the life of the Project. This will inform Project planning and Aurene will continue to provide DBCA with updated information.

### Related Approvals

Aurene Mining is in the process of obtaining approvals to secure Stage 1 of mining for the Mt Ida Gold Project at Bottle Creek, according to a submitted Mining Proposal/Mine Closure Plan (Reg ID 98744) (DMIRS). A **Works Approval** (W6640-2022-1) has been submitted to DWER for assessment of infrastructure (processing plant, tailings, waste handling, etc).

A (DMIRS) **clearing permit** (CPS 9383/1) has been granted for up to 1,000 ha over a 5-year period to provide for a clearing for the Project. The permit has a Flora Management condition limiting the take of Priority flora to 338 individuals.

Aurene is in the process of seeking an amendment to CPS 9383 to seek to include additional tenements that have recently been granted to increase the authorised take of 338 (from 1200 individuals) to up to 2000 from ~10,000 individuals.

We trust this information is useful for understanding the local population of *J. lanicarpa* and the potential impacts relating to the Mt Ida Gold Project at Bottle Creek. We will continue to provide further information in regard to the species local distribution, numbers and impacts. We welcome any comment the Department would provide in regard to management of this species. Please do not hesitate to contact me on 6269 2763, or [vanessa.clarke@aurene.com](mailto:vanessa.clarke@aurene.com).

Your sincerely

A handwritten signature in black ink, appearing to be 'V. Clarke', enclosed in a simple circular scribble.

Vanessa Clarke  
Environmental Superintendent  
Aurene Mining