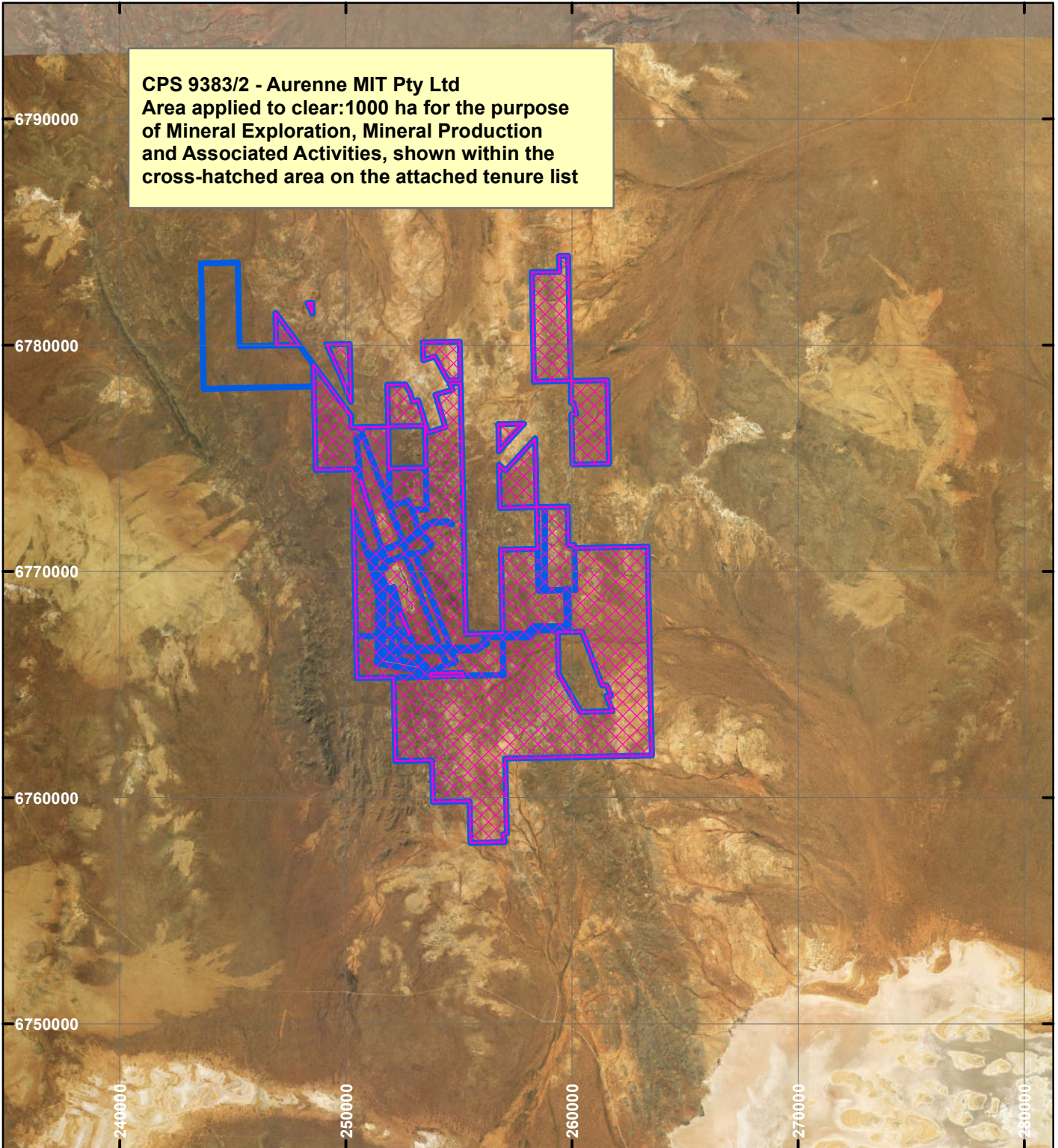
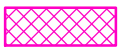


CPS 9383/2 - Aurenne MIT Pty Ltd



CPS 9383/2 - Aurenne MIT Pty Ltd
Area applied to clear: 1000 ha for the purpose
of Mineral Exploration, Mineral Production
and Associated Activities, shown within the
cross-hatched area on the attached tenure list

LEGEND

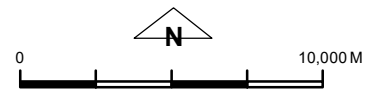


Clearing Instruments



Mining Tenements

Orthophotography sourced from Landgate



Scale 1:250,000

(Approximate when reproduced at A4)

Geocentric Datum Australia 1994

Note: the data in this map have not been projected. This may result in geometric distortion or measurement inaccuracies.

..... Date

Officer with delegated authority under Section 20 of the Environmental Protection Act 1986

Information derived from this map should be confirmed with the data custodian acknowledged by the agency acronym in the legend.



WA Crown Copyright 2002