

CPS 9395/1 - Map

115°9'54.000"E

115°10'12.000"E

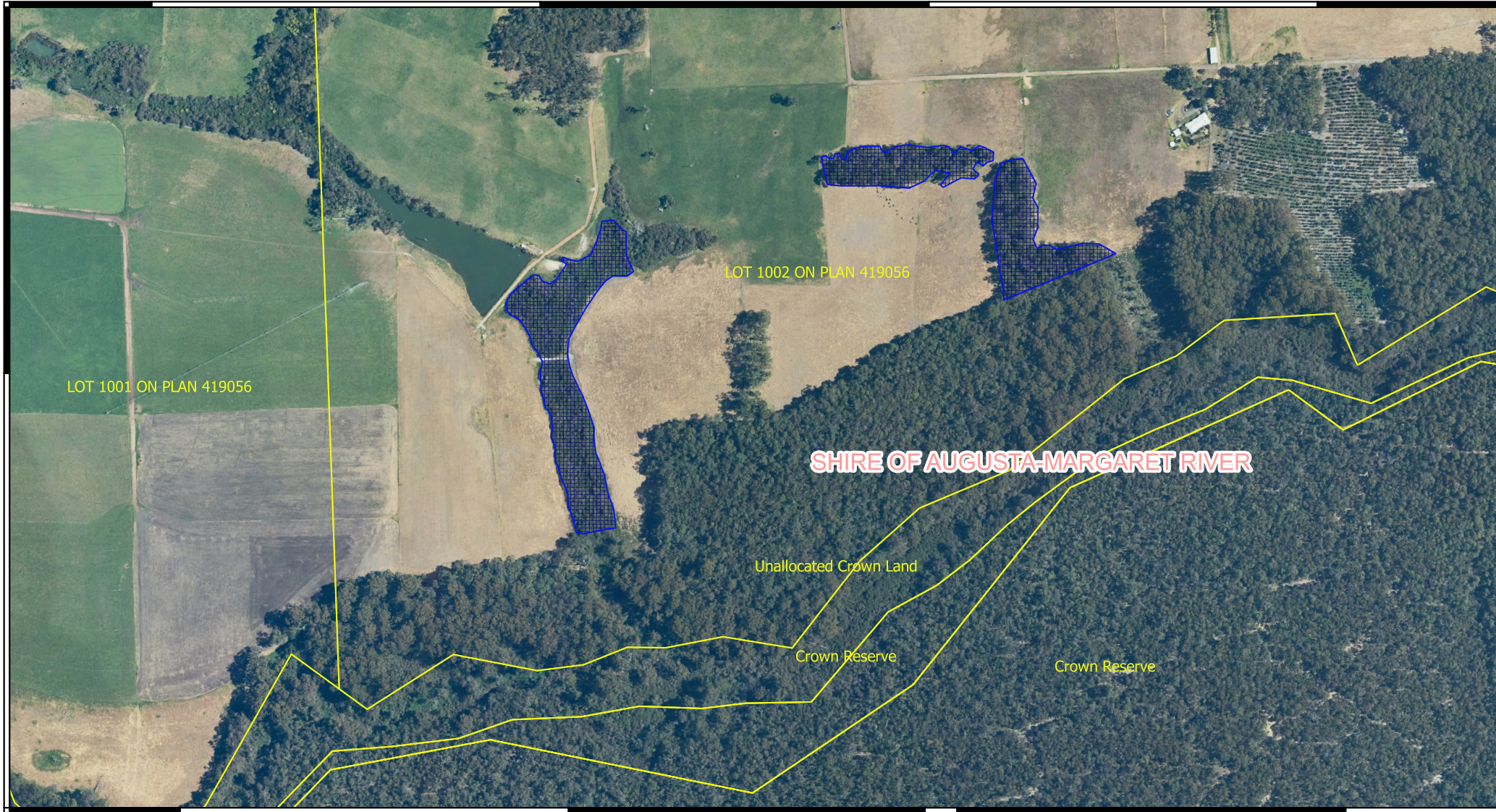
115°10'30.000"E

115°10'48.000"E

34°4'48.000"S

34°4'48.000"S

34°5'6.000"S



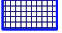


115°9'54.000"E

115°10'12.000"E

115°10'30.000"E

115°10'48.000"E

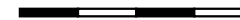
Legend

-  CPS areas applied to clear
-  Local Government Authorities
-  Cadastre - LGATE 218



MGA 94
Geocentric Datum of Australia 1994

0 25 50 75 100 m



1:6500



GOVERNMENT OF
WESTERN AUSTRALIA