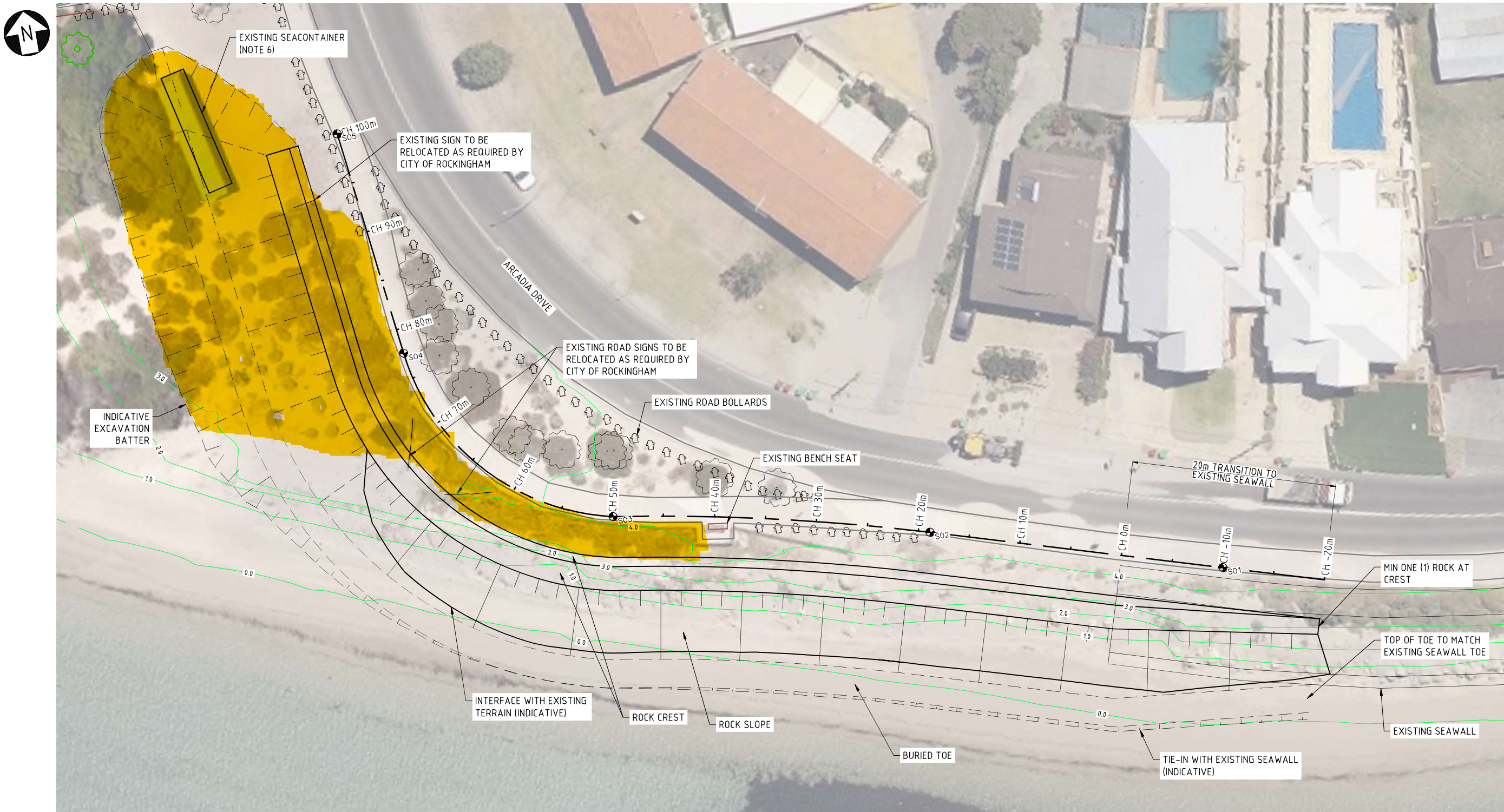


CPS 9426/1 - Supporting Information - Drawings of proposed sea wall construction

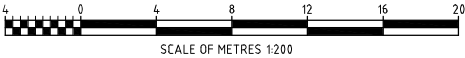


SEAWALL SETOUT POINTS			
SETOUT POINT	EASTING (m)	NORTHING (m)	
S01	377895.31	6424982.34	
S02	377867.71	6424990.71	R1105m
S03	377837.46	6424997.60	R112m
S04	377820.05	6425016.90	
S05	377817.38	6425039.14	

SETOUT PLAN
SCALE 1:200

- LEGEND:
- S01 SETOUT POINT
 - 1.0 EXISTING CONTOUR
 - SETOUT LINE

- NOTES:
- ALL DIMENSIONS ARE IN METRES U.N.O. ALL CHAINAGES AND OFFSETS ARE IN METRES U.N.O.
 - ALL LEVELS ARE IN METRES TO AUSTRALIAN HEIGHT DATUM (m AHD).
 - ALL COORDINATES TO MGA94 ZONE 50.
 - EXISTING CONTOURS ARE FROM MNG SURVEY May 2019 REFER 102184-002.
 - AERIAL PHOTO IS FROM FEB 2019.
 - EXISTING CONTAINER TO BE RELOCATED DURING CONSTRUCTION AS PER INSTRUCTIONS BY THE CITY OF ROCKINGHAM.



REV	DATE	REVISION DESCRIPTION	DRAWN	DRAFT CHK	DESIGNED	ENG CHK	APPROVED	CUSTOMER	REF DRAWING No	REFERENCE DRAWING TITLE
0	13.08.19	ISSUED FOR TENDER	TMJ	JDC	AK	MK	MK			

Copyright ©
Advisian Pty Ltd

ADVISIAN PROJECT No.
301012-02702

ENGINEERING AND PERMIT STAMPS (As Required)

INFORMATION ONLY
NOT TO BE USED
FOR CONSTRUCTION

"This drawing is prepared solely for the use of the contractual customer of Advisian and Advisian assumes no liability to any other party for any representations contained in this drawing."

CITY OF ROCKINGHAM
MERSEY POINT SEAWALL
SETOUT PLAN

DRG No
301012-02702-CS-DWG-0002