



# Clearing Permit

## Nanga Road

### CPS 9430-1

## Additional Information

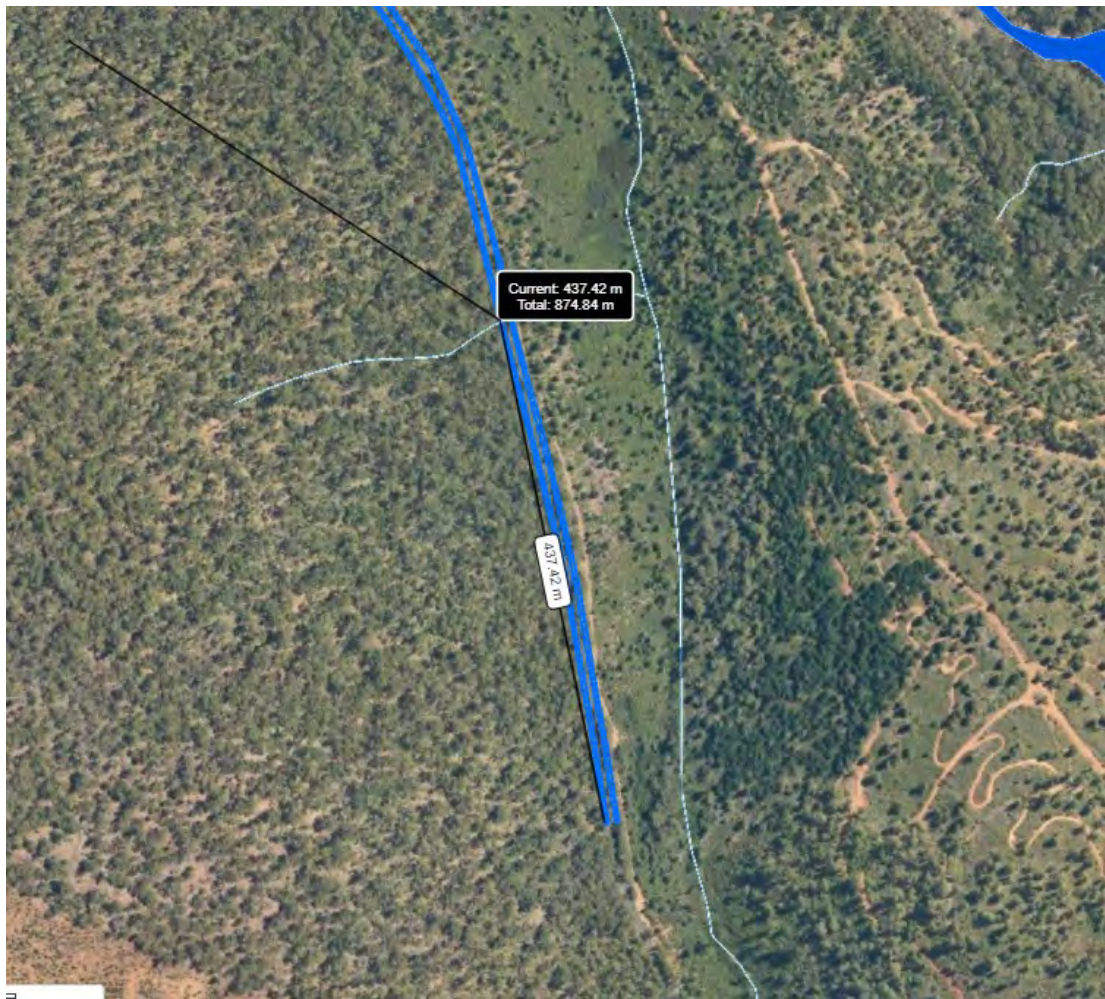
# Index

## Contents

1. Confirmation of Clearing to occur within the bed and banks of watercourse.....	3
2. Further information regarding the trees proposed to be cleared. ....	3
3. Clearing Calculations.....	4
4. Photos and Additional Information.....	5

## 1. Confirmation of Clearing to occur within the bed and banks of watercourse.

The Shire will allow a 5-10m buffer from the water course pictured below.



## 2. Further information regarding the trees proposed to be cleared.

As stated within the application the Shire intend to mulch the ground cover and limit the removal of substantial trees due to the steep road verges. The design was received on Monday 24 January which outlines a total of 14 trees for removal. A site inspection has taken place and the total number of trees has been increased to 20 trees being flagged for removal in addition to the mulching of ground cover.

### 3. Clearing Calculations

Please note the Shire still intend to clear 1 hectare of ground cover vegetation and a total of 20 trees.

It is important to note that the estimated hectares provided is a worst-case scenario and given the limited funds for this project coupled with the cost impact of installing barriers it is extremely unlikely that the full area requested will be cleared.

<b>Road Reserve Width:</b>	20m
<b>Seal Width:</b>	6m
<b>Ground Cover Mulching</b>	6m x 1650m (3m on both north and south bound lanes)
<b>Tree Removal</b>	20
<b>Estimated M<sup>2</sup></b>	9,900m <sup>2</sup>
<b>Estimated Hectares</b>	1 hectare
<b>Estimated Trees</b>	20 Trees

The table below is a vegetation breakdown for the 1,650 metre work area.

Vegetation Breakdown		
Species	Description	Percentage
Macrozamia Riedlei	<i>Zamia palm roughly half a metre in height.</i>	3%
Eucalyptus Marginata	<i>Commonly known as Jarrah Tree</i>	1%
Genus Xanthorrhoea	<i>Commonly known as the grass tree</i>	1%
Corymbia Calophylla	<i>Commonly known as Marri tree.</i>	10%
Bossiaea Aquifolium	<i>Shrub or tree known as waster bush.</i>	20%
Pine Tree	<i>Established trees from previous plantations.</i>	5%
Pteridium Esculentum	<i>Known as Bracken Fern or bracken.</i>	60%
<b>Total</b>		<b>100%</b>

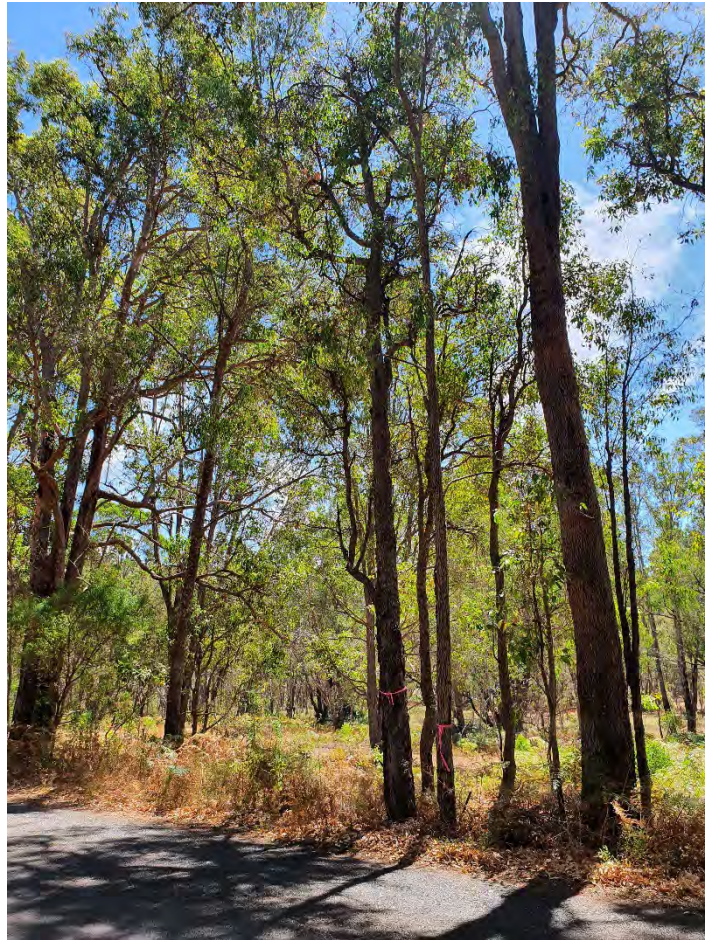


#### 4. Photos and Additional Information

*Photos were taken in a south easterly direction.*



Tree ID	SLK	Description	Pruning/ Removal	Observations
1	0.50	Corymbia Calophylla	Removal	No visible nest or hollows

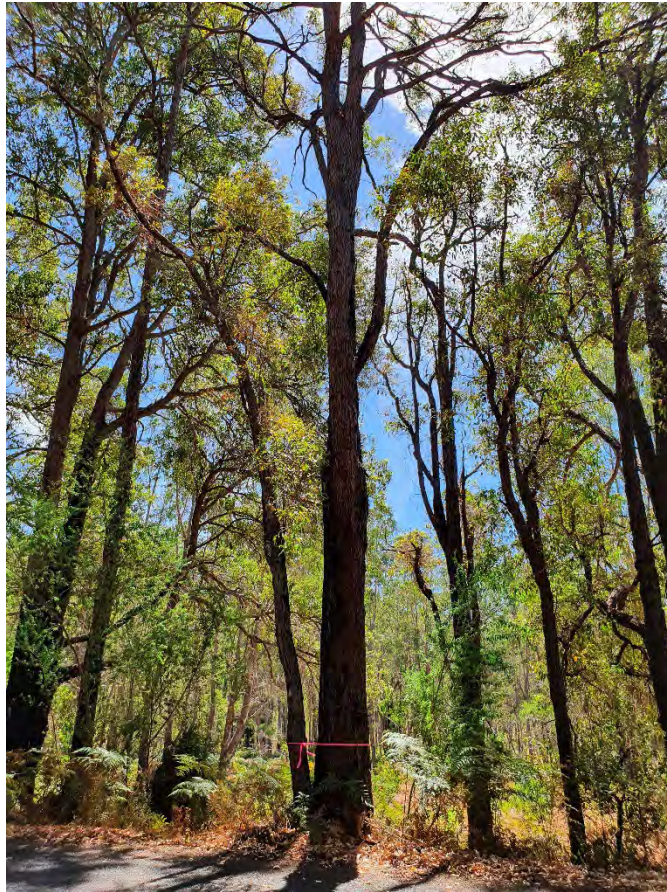


Tree ID	SLK	Description	Pruning/ Removal	Observations
2	0.50	Corymbia Calophylla	Removal	No visible nest or hollows
3	0.50	Corymbia Calophylla	Removal	No visible nest or hollows





Tree ID	SLK	Description	Pruning/ Removal	Observations
4	0.63	Corymbia Calophylla	Removal	No visible nest or hollows



Tree ID	SLK	Description	Pruning/ Removal	Observations
5	0.65	Corymbia Calophylla	Removal	No visible nest or hollows





Tree ID	SLK	Description	Pruning/ Removal	Observations
6	0.68	Corymbia Calophylla	Removal	No visible nest or hollows





Tree ID	SLK	Description	Pruning/ Removal	Observations
7	0.72	Corymbia Calophylla	Removal	No visible nest or hollows





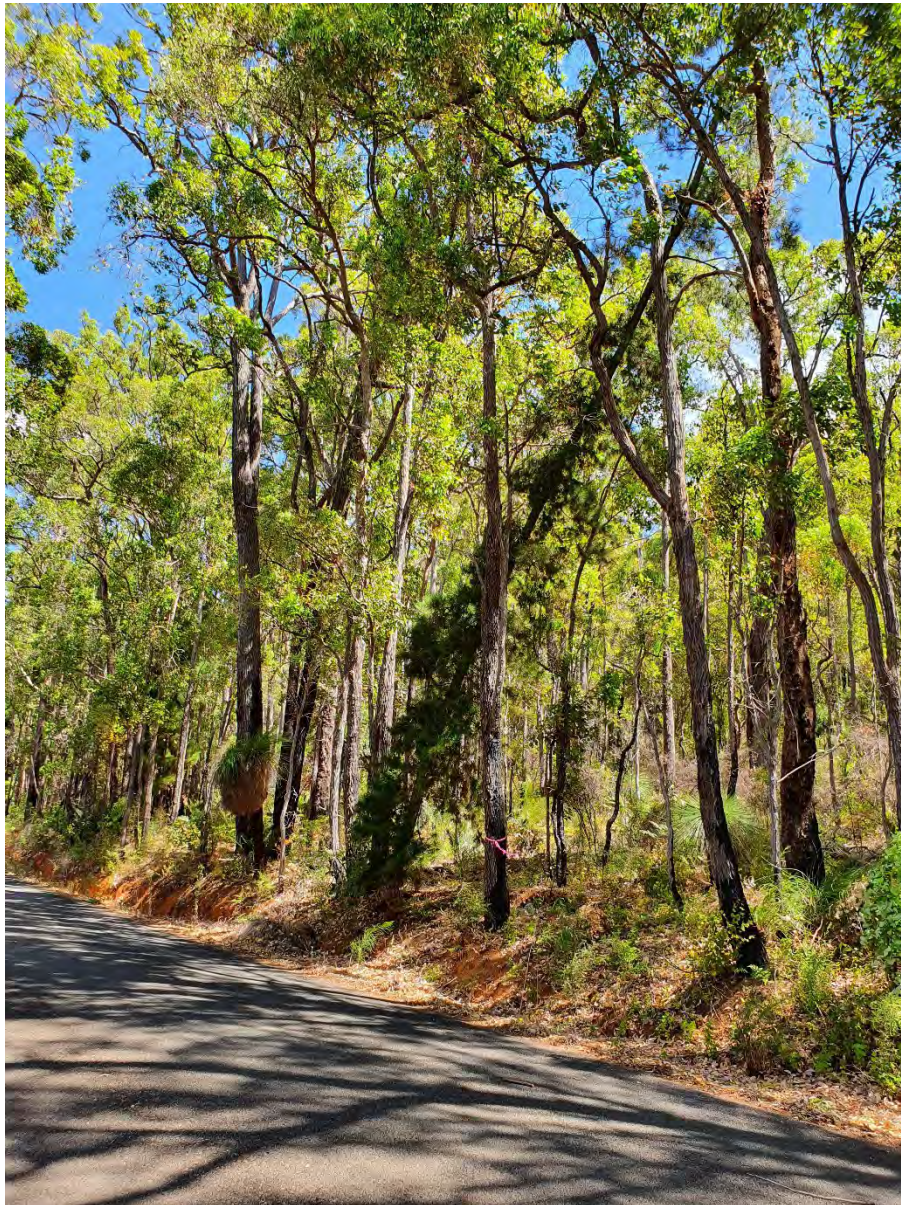
Tree ID	SLK	Description	Pruning/ Removal	Observations
8	1.19	Corymbia Calophylla	Removal	No visible nest or hollows





Tree ID	SLK	Description	Pruning/ Removal	Observations
9	1.31	Corymbia Calophylla	Removal	No visible nest or hollows





Tree ID	SLK	Description	Pruning/ Removal	Observations
10	1.41	Corymbia Calophylla	Removal	No visible nest or hollows





Tree ID	SLK	Description	Pruning/ Removal	Observations
11	1.33	Corymbia Calophylla	Removal	No visible nest or hollows





Tree ID	SLK	Description	Pruning/ Removal	Observations
12	1.33	Corymbia Calophylla	Removal	No visible nest or hollows
13	1.33	Corymbia Calophylla	Removal	No visible nest or hollows





Tree ID	SLK	Description	Pruning/ Removal	Observations
14	1.42	Corymbia Calophylla	Removal	No visible nest or hollows





Tree ID	SLK	Description	Pruning/ Removal	Observations
15	1.53	Corymbia Calophylla	Removal	No visible nest or hollows





Tree ID	SLK	Description	Pruning/ Removal	Observations
16	1.54	Corymbia Calophylla	Removal	No visible nest or hollows





Tree ID	SLK	Description	Pruning/ Removal	Observations
17	1.56	Corymbia Calophylla	Removal	No visible nest or hollows





Tree ID	SLK	Description	Pruning/ Removal	Observations
18	1.80	Corymbia Calophylla	Removal	No visible nest or hollows





Tree ID	SLK	Description	Pruning/ Removal	Observations
19	1.80	Corymbia Calophylla	Removal	No visible nest or hollows



Tree ID	SLK	Description	Pruning/ Removal	Observations
20	1.92	Corymbia Calophylla	Removal	No visible nest or hollows