

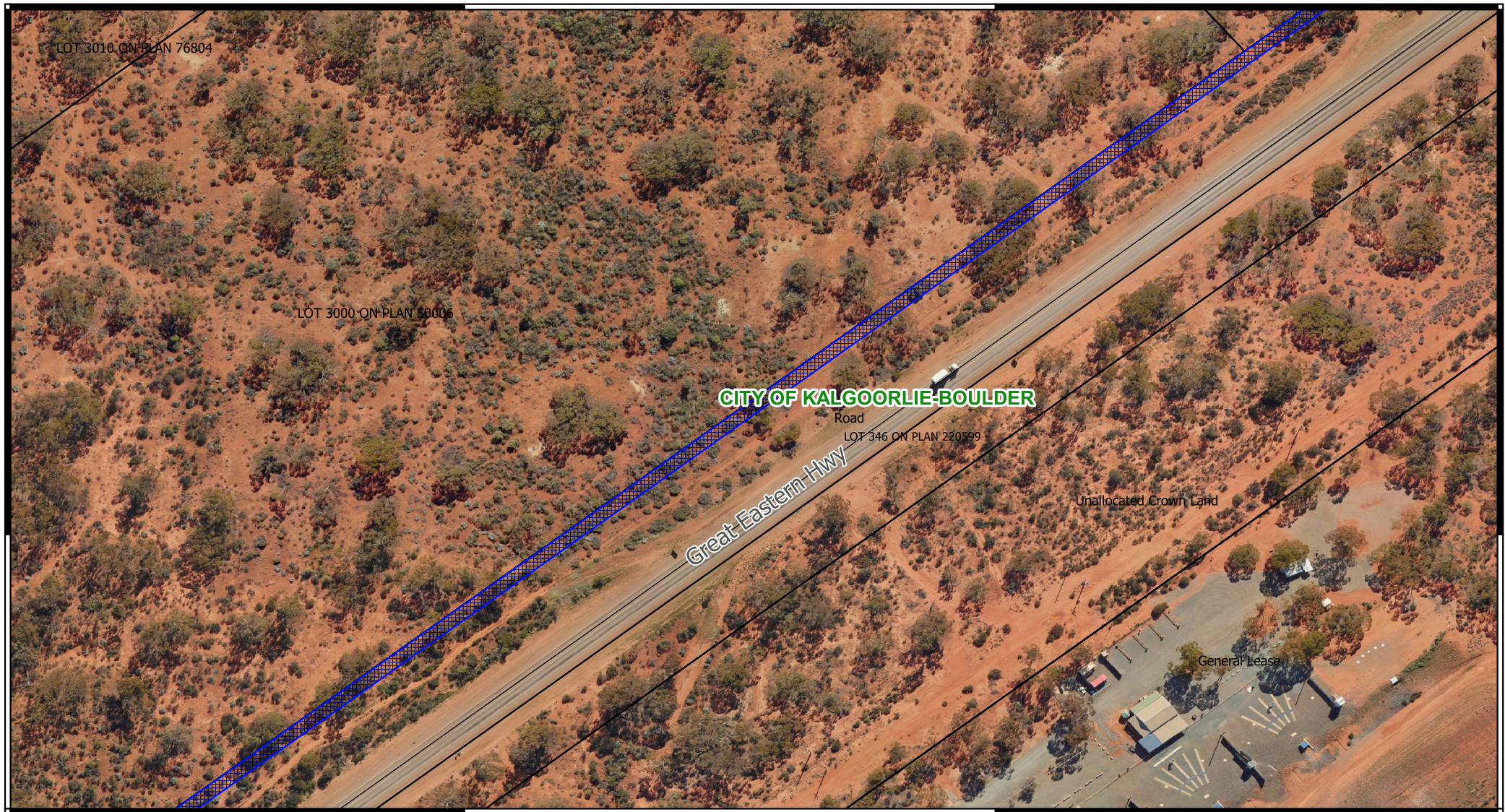
# CPS 9444/1 - Map E

121°24'57.600"E

121°25'4.800"E

30°47'31.200"S

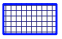
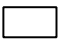

30°47'31.200"S



121°24'57.600"E

121°25'4.800"E

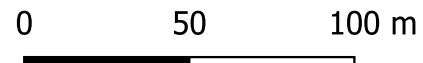
## Legend

-  CPS areas applied to clear
-  Land Tenure LGATE - 226
-  Local Government Authorities

— Local Rd - Other



MGA 94  
Geocentric Datum of Australia 1994



1:1500



GOVERNMENT OF  
WESTERN AUSTRALIA