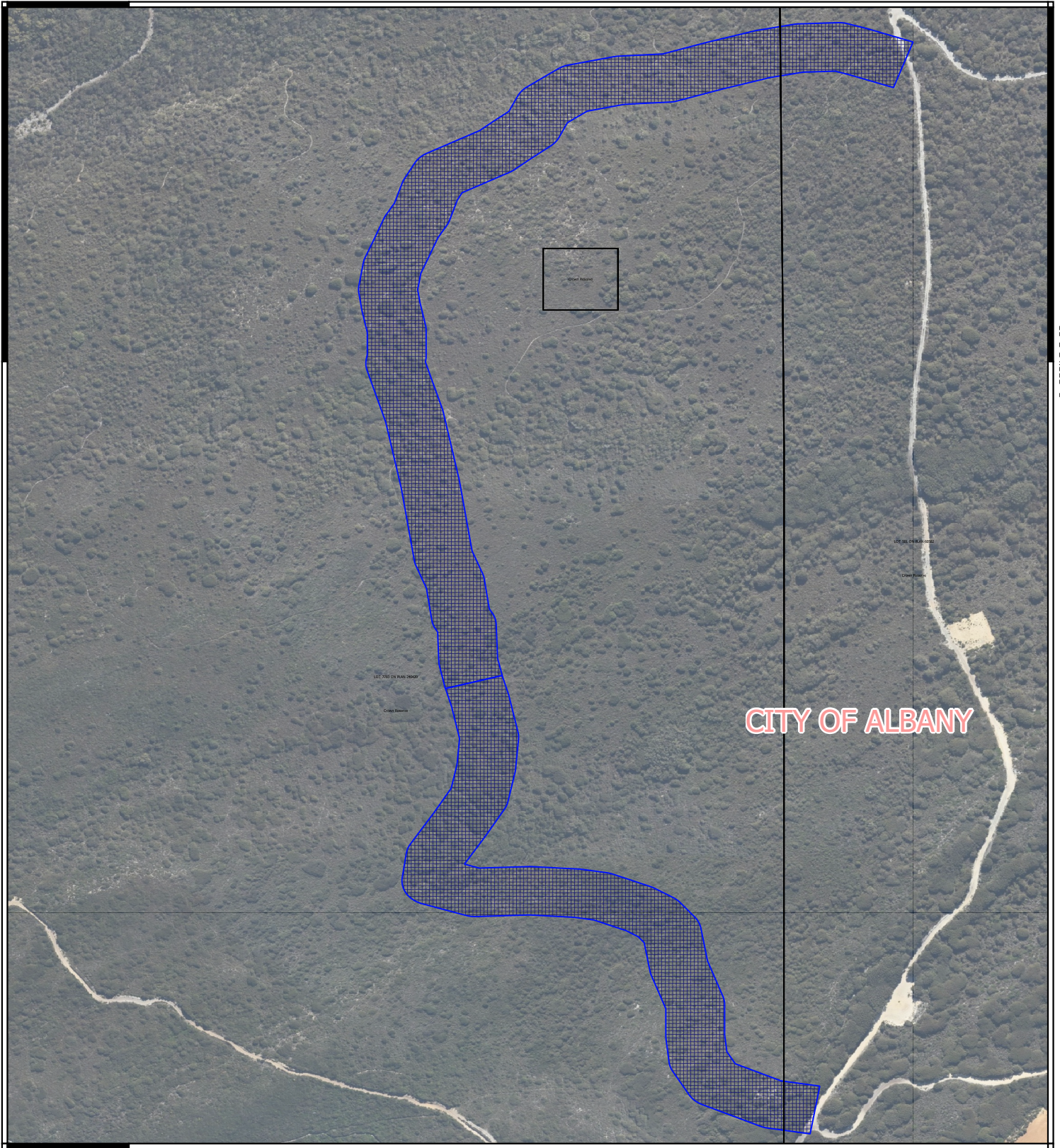


# CPS 9454/1 - Map B

117°44'24.000"E

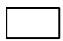


35°27'24.000"S

35°27'24.000"S



117°44'24.000"E

## Legend

-  Land Tenure
-  CPS areas applied to clear
-  Local Government Authorities



1:3,377

0 50 100 150 200 m



GOVERNMENT OF  
WESTERN AUSTRALIA