

CPS 9479/1 - Map

116°11'13.200"E

116°11'24.000"E

116°11'34.800"E

116°11'45.600"E

31°2'49.200"S

31°3'0.000"S

31°3'10.800"S

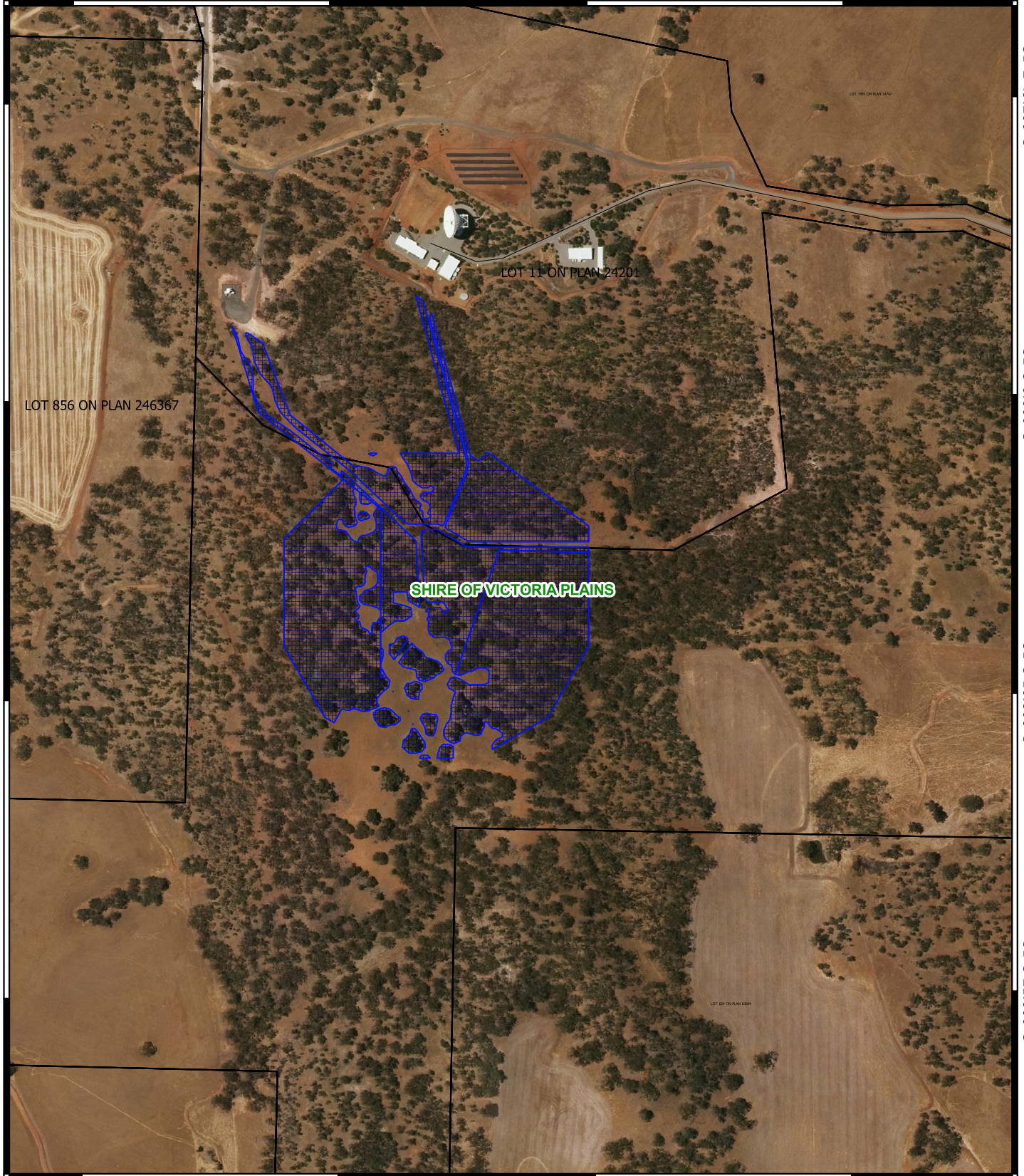
31°3'21.600"S

31°2'49.200"S

31°3'0.000"S

31°3'10.800"S

31°3'21.600"S



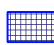
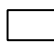

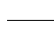
116°11'13.200"E

116°11'24.000"E

116°11'34.800"E

116°11'45.600"E

Legend

-  CPS areas applied to clear
-  Land TenureLGATE - 226
-  Local Government Authorities
-  Local Rd - Sealed



1:6,000

0 0.1 0.2 km



MGA 94
Geocentric Datum of Australia 1994



GOVERNMENT OF
WESTERN AUSTRALIA