



BROOKFIELD ESTATE

SEWER EXTENSION

LANDSCAPE FINISHES

LANDSCAPE CONTRACT: PGPM-07

LANDSCAPE WORKS

CLIENT: BROOKFIELD ESTATE PTY LTD

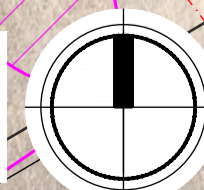
ISSUE FOR: COMMENT

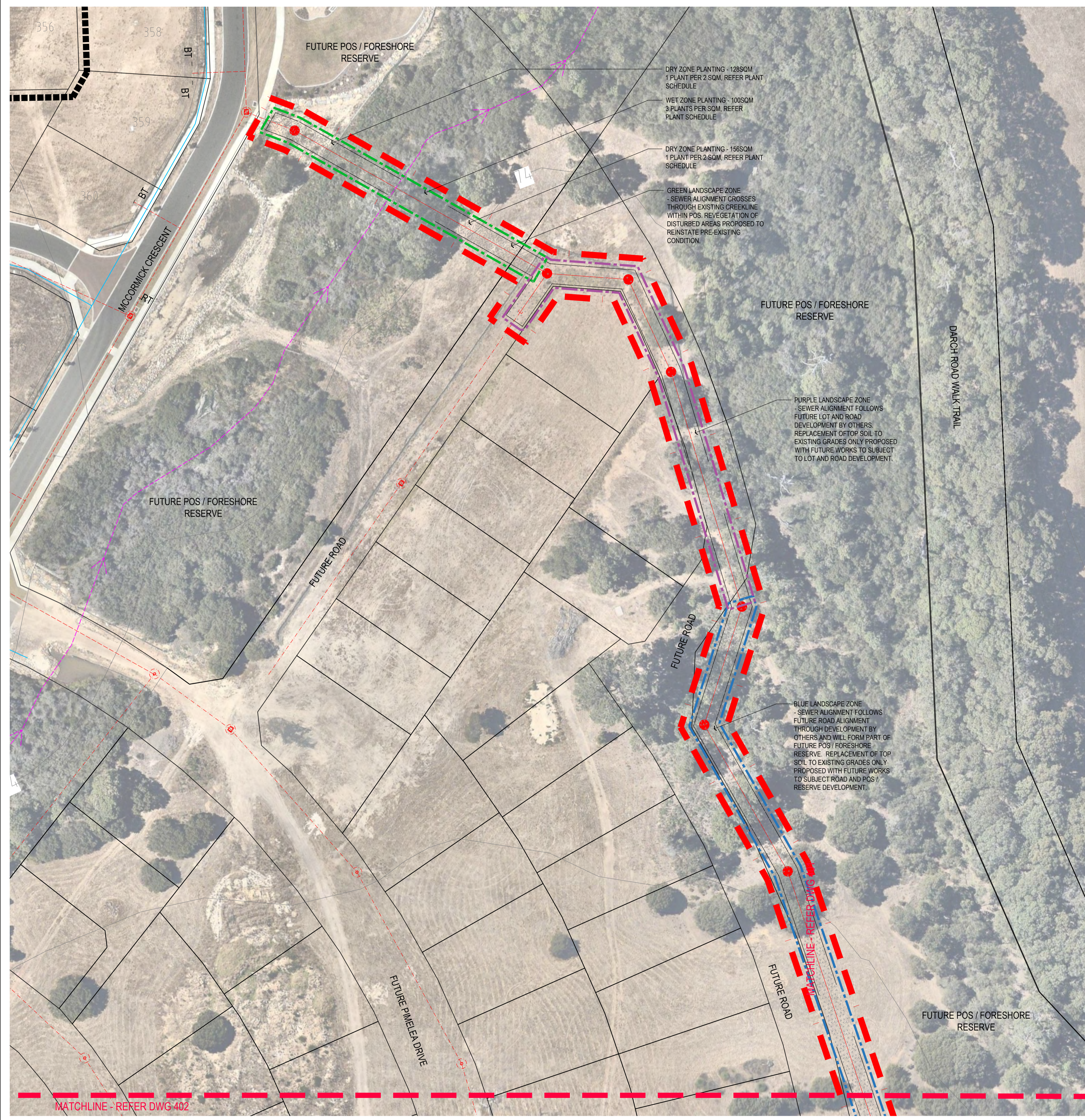
DATE: AUGUST 2020

Sheet List Table

Sheet Number	Revision Number	Sheet Title
PGPM-07-000	A	COVER PAGE
PGPM-07-401	A	LANDSCAPE FINISHES PLAN
PGPM-07-402	A	LANDSCAPE FINISHES PLAN

LOCATION PLAN
1:1000 @ A1





PLANT SCHEDULE - WET ZONE REHABILITATION PLANTING: TOTAL 179SQM
NOTE: FINAL SPECIES TO BE NOMINATED IN CONSULTATION WITH COUNCIL AND SUBJECT TO AVAILABILITY

CODE	BOTANIC NAME	COMMON NAME	SIZE	QTY
TREES				
Afl	Agonis flexuosa	WA Peppermint	Tube	18
Mha	Melaleuca hamulosa	Creekline Honey Myrtle	Tube	18
Min	Melaleuca incana	Grey Honey Myrtle	Tube	18
RUSHES / SEDGES				
Bar	Bamusa articulata	Jointed Twig Rush	Tube	80
Bju	Baumea juncea	Bare Twig Rush	Tube	80
Jpa	Juncus pallidus	Pale Rush	Tube	80
Jsu	Juncus subsecundus	Finger Rush	Tube	80
Lpa	Lomandra pauciflora	Tube	Tube	80
Lef	Lepidosperma effusum	Spreading Sword Sedge	Tube	80

PLANT SCHEDULE - DRY ZONE REHABILITATION PLANTING: TOTAL 565SQM
NOTE: FINAL SPECIES TO BE NOMINATED IN CONSULTATION WITH COUNCIL AND SUBJECT TO AVAILABILITY

CODE	BOTANIC NAME	COMMON NAME	SIZE	QTY
TREES				
Afl	Agonis flexuosa	WA Peppermint	Tube	7
Cca	Corymbia calophylla	Marr	Tube	7
Ema	Eucalyptus marginata	Jarrah	Tube	7
Epa	Eucalyptus patens	Blackbutt	Tube	7
SHRUBS				
Afa	Astartea fascicularis	False Baeckea	Tube	18
Bsp	Beaufortia sparsa	Swamp Bottlebrush	Tube	18
Cia	Callistichus lanceolata	Native Willow	Tube	18
Cia	Calothamum lateralis	Tube	Tube	18
Hva	Hakea varia	Variable Leaved Hakea	Tube	18
Vju	Viminaria juncea	Native Broom	Tube	18
GROUNDCOVERS				
Afv	Anigozanthus flavidus	Tall Kangaroo Paw	Tube	12
Cac	Conostylis aculeata	Prickly Conostylis	Tube	12
Coo	Chorizanthe cordata	Heart Leaf Flame Pea	Tube	12
Dli	Dampiera linearis	Common Dampiera	Tube	12
Evi	Eulalia virgata	Tube	Tube	12
Hcu	Hibbertia cuneiformis	Cut Leaf Hibbertia	Tube	12
Han	Hypocalymma angustissima	Pink Flowered Myrtle	Tube	12
Hro	Hypocalymma robustum	Swan River Myrtle	Tube	12
Lsq	Lepidosperma squamatum	Tube	Tube	12
Lbi	Leschenaultia biloba	Blue Leschenaultia	Tube	12
Lau	Leucopogon australis	Spike Beard Heath	Tube	12
Poc	Paterosia occidentalis	Native Iris	Tube	12
Pro	Pimelea rosea	Rice Flower	Tube	12
Sca	Scaevola caliptera	Purple Fan Flower	Tube	12

LEGEND

- EXTENT OF WORKS
- GREEN LANDSCAPE ZONE
Land area to be future public open with sewer alignment crossing existing creeklines. Rehabilitation planting proposed to re-instated pre-existing landscape conditions in accordance with the Rapids Landing Estate Foreshore Management Plan (Coffey, 2011)
- PURPLE LANDSCAPE ZONE
Sewer alignment follows future lot and road development by others. replacement of top soil to existing grades only proposed with future works to subject to lot and road development.
- BLUE LANDSCAPE ZONE
Sewer alignment follows future road alignment through development by others and will form part of future pos / foreshore reserve. replacement of top soil to existing grades only proposed with future works to subject road and pos / reserve development.

LEGEND

- PLANTING TO OCCUR IN RANDOM GROUPS OF 3, 5 OR 7 OF THE SAME SPECIES
- SET-OUT TO BE APPROVED ON SITE BY SUPERINTENDENT PRIOR TO ANY WORKS TAKING PLACE.

STANDARD NOTES

- SET OUT & DIMENSIONS.** THE CONTRACTOR SHALL SET OUT ALL PATHS, WALLS, HANDRAILS AND ELEMENTS EITHER ON OR OFF SITE PRIOR TO CONSTRUCTION AND SHALL OBTAIN THE SUPERINTENDENT'S SET OUT APPROVAL PRIOR TO WORKS COMMENCING. WRITTEN DIMENSIONS SHALL TAKE PRECEDENCE OVER SCALE. CHECK ALL DRAWING SCALES IN CONSULTATION WITH DRAWING SIZE.
- SERVICES & SITE ASSETS.** THE CONTRACTOR SHALL INVESTIGATE THE NATURE AND LOCATION OF ALL EXISTING SERVICES AND SET ASSETS AFFECTED BY THEIR WORKS. FAILURE TO TAKE DUE CARE SHALL NOT LIMIT THE CONTRACTOR'S LIABILITIES.
- REFERENCE.** THE CONTRACTOR SHALL REFER TO ALL CONTRACT DOCUMENTS, THE SPECIFICATION AND DRAWINGS PRIOR TO AND DURING THE WORKS.
- DISCREPANCIES.** NOTIFY SUPERINTENDENT OF ANY SUSPECTED OR KNOWN DISCREPANCIES OR ERRORS PRIOR TO THE ORDERING OF AFFECTED MATERIALS AND OR CONSTRUCTION OF AFFECTED WORKS.
- RELEVANT STANDARDS.** THE CONTRACTOR SHALL UNDERTAKE ALL PRICES AND WORKS IN ACCORDANCE WITH CURRENT INDUSTRY BEST PRACTICE AND ALL RELEVANT AUSTRALIAN STANDARDS.
- SERVICE LOCATOR.** THE CONTRACTOR SHALL UNDERTAKE A DIAL BEFORE YOU DIG PROCESS PRIOR TO COMMENCING WORKS ON SITE. THE CONTRACTOR SHALL ENGAGE A SERVICE LOCATOR TO MAP THE SPECIFIC LOCATIONS AND DEPTH OF ALL SERVICES AND ADVISE ALL RELEVANT STAFF AND SUBCONTRACTORS IN WRITING PRIOR TO COMMENCING WORKS ON SITE.

REV	DATE	BY	ISSUE OR AMENDMENT
A	10.08.2020	CE	ISSUE FOR APPROVAL

THIS IS AN UNCONTROLLED DOCUMENT ISSUED FOR INFORMATION ONLY UNLESS SIGNED BELOW AT EACH RELEVANT STAGE.

INTERNAL DESIGN REVIEW
THE DESIGN HAS APPROVED WITHOUT BEING INTERNALLY REVIEWED AND SIGNED HERE. EMERGE DIRECTOR: _____ DATE: _____

INTERNAL PRETENDER REVIEW
THE DRAWING IS NOT AUTHORISED FOR TENDER WITHOUT BEING INTERNALLY REVIEWED AND SIGNED HERE. EMERGE DIRECTOR: _____ DATE: _____

AUTHORISED FOR CONSTRUCTION
THE DRAWING IS NOT AUTHORISED FOR CONSTRUCTION UNLESS IT IS MARKED REV 1 OR HIGHER AND IS SIGNED HERE. EMERGE DIRECTOR: _____ DATE: _____

emerge ASSOCIATES
Integrated Science & Design
PERTH (08) 9380 4988 • MARGARET RIVER (08) 9758 8159

PROJECT
BROOKFIELD ESTATE
SEWER EXTENSION
STAGE OR PHASE
LANDSCAPE FINISHES

DRAWING TITLE
LANDSCAPE FINISHES PLAN
SHEET 2 OF 2

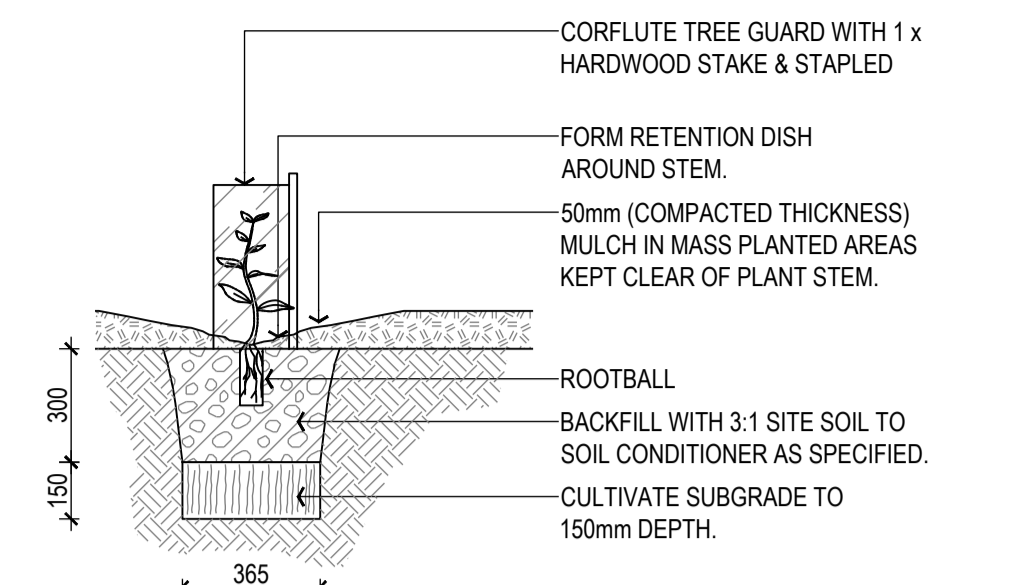
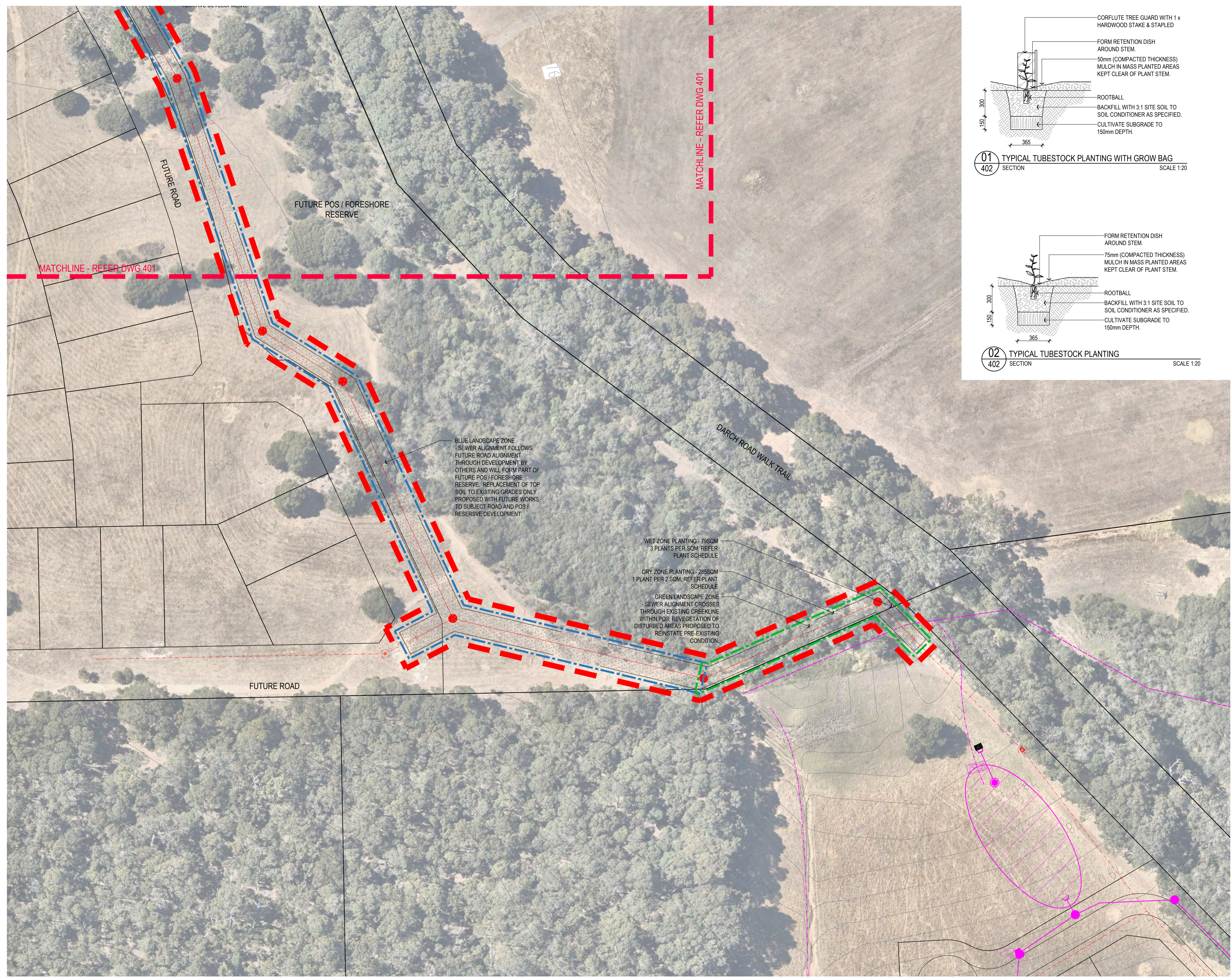
CLIENT
BROOKFIELD ESTATE PTY LTD

DESIGNED BY CE PRELIM DESIGN REVIEWED BY CE
DRAWN BY CE PRELIM DWG REVIEWED BY CE
DATE INITIALLY DRAWN 03.08.20
SCALE 1: 500 @ A1 METRES
DRAWING NUMBER PGPM-07-401 REV A

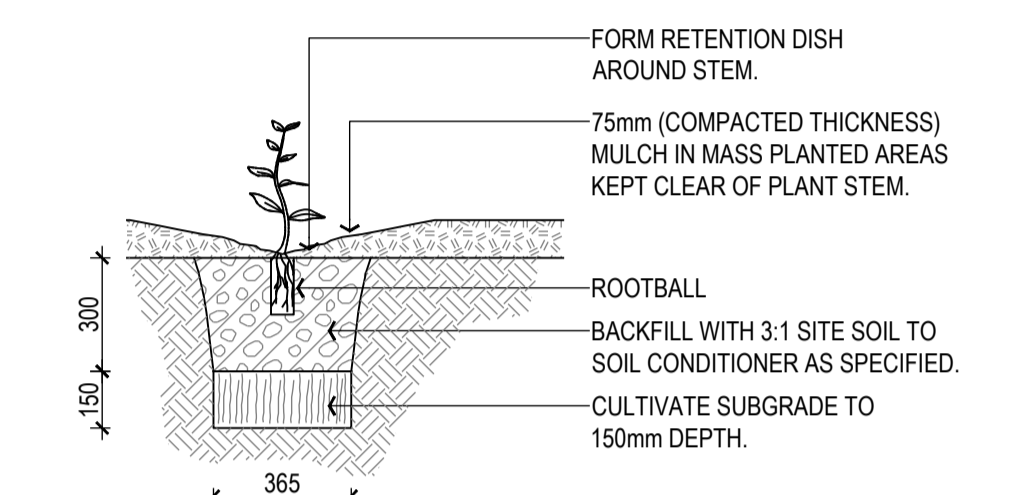
SEE: BROOKFIELD ESTATE MARGARET RIVER PHOTOS DRAWINGS & SCANS TO: AUTOCAD@EMERGE.COM.AU

MATCHLINE - REFER DWG 402

MATCHLINE - REFER DWG 402



01 TYPICAL TUBESTOCK PLANTING WITH GROW BAG SECTION SCALE 1:20



02 TYPICAL TUBESTOCK PLANTING SECTION SCALE 1:20

- LEGEND**
- EXTENT OF WORKS
 - GREEN LANDSCAPE ZONE**
Land area to be future public open with sewer alignment crossing existing creeklines. Rehabilitation planting proposed to re-instate pre-existing landscape conditions in accordance with the Rapids Landing Estate Foreshore Management Plan (Coffey, 2011)
 - WET ZONE REHABILITATION PLANTING**
3 plants per square metre, refer plant schedule for species, no mulch and no rabbit guards required.
 - DRY ZONE REHABILITATION PLANTING**
1 plant per 2 square metres, refer plant schedule for species, 75mm course mulch and rabbit guards required.
 - PURPLE LANDSCAPE ZONE**
Sewer alignment follows future lot and road development by others. replacement of top soil to existing grades only proposed with future works to subject lot and road development.
 - BLUE LANDSCAPE ZONE**
Sewer alignment follows future road alignment through development by others and will form part of future pos / foreshore reserve. replacement of top soil to existing grades only proposed with future works to subject road and pos / reserve development.
- LEGEND**
1. PLANTING TO OCCUR IN RANDOM GROUPS OF 3, 5 OR 7 OF THE SAME SPECIES
 2. SET-OUT TO BE APPROVED ON SITE BY SUPERINTENDENT PRIOR TO ANY WORKS TAKING PLACE.

- STANDARD NOTES**
1. **SET OUT & DIMENSIONS.** THE CONTRACTOR SHALL SET OUT ALL PATHS, WALLS, HANDS, SERVICES AND ELEMENTS EITHER ON OR OFF SITE PRIOR TO CONSTRUCTION AND SHALL OBTAIN THE SUPERINTENDENT'S SET OUT APPROVAL PRIOR TO WORKS COMMENCING. WRITTEN DIMENSIONS SHALL TAKE PRECEDENCE OVER SCALES. CHECK ALL DRAWING SCALES IN CONJUNCTION WITH DRAWING SIZE.
 2. **SERVICES & SITE ASSETS.** THE CONTRACTOR SHALL INVESTIGATE THE NATURE AND LOCATION OF ALL EXISTING SERVICES AND IDENTIFY SITE ASSETS AFFECTED BY THEIR WORKS. FAILURE TO TAKE DUE CARE SHALL NOT LIMIT THE CONTRACTOR'S LIABILITIES.
 3. **REFERENCE.** THE CONTRACTOR SHALL REFER TO ALL CONTRACT DOCUMENTS, THE SPECIFICATION AND DRAWINGS PRIOR TO AND DURING THE WORKS.
 4. **DISCREPANCIES.** NOTIFY SUPERINTENDENT OF ANY SUSPECTED OR KNOWN DISCREPANCIES OR ERRORS PRIOR TO THE ORDERING OF AFFECTED MATERIALS AND OR CONSTRUCTION OF AFFECTED WORKS.
 5. **RELEVANT STANDARDS.** THE CONTRACTOR SHALL UNDERTAKE ALL PRICES AND WORKS IN ACCORDANCE WITH CURRENT INDUSTRY BEST PRACTICE AND ALL RELEVANT AUSTRALIAN STANDARDS.
 6. **SERVICE LOCATOR.** THE CONTRACTOR SHALL UNDERTAKE A DIAL BEFORE YOU DIG PROCESS PRIOR TO COMMENCING WORKS ON SITE. THE CONTRACTOR SHALL ENGAGE A SERVICE LOCATOR TO MAP THE SPECIFIC LOCATIONS AND DEPTH OF ALL SERVICES AND ADVISE ALL RELEVANT STAFF AND SUBCONTRACTORS IN WRITING PRIOR TO COMMENCING WORKS ON SITE.

REV	DATE	BY	ISSUE OR AMENDMENT
A	10.08.2020	CE	ISSUE FOR APPROVAL

THIS IS AN UNCONTROLLED DOCUMENT ISSUED FOR INFORMATION ONLY UNLESS SIGNED BELOW AT EACH RELEVANT STAGE.

INTERNAL DESIGN REVIEW
THIS DESIGN HAS BEEN REVIEWED BY: _____ DATE: _____
WITHOUT BEING INTERNALLY REVIEWED AND SIGNED HERE: _____

INTERNAL PRETENDER REVIEW
THIS DRAWING IS NOT AUTHORISED FOR TENDER WITHOUT BEING INTERNALLY REVIEWED AND SIGNED HERE: _____

AUTHORISED FOR CONSTRUCTION
THIS DRAWING IS NOT AUTHORISED FOR CONSTRUCTION UNLESS IT IS MARKED 'REV' OR 'FOR CONSTRUCTION' AND SIGNED HERE: _____

emerge ASSOCIATES
Integrated Science & Design
PERTH (08) 9380 4088 • MARGARET RIVER (08) 9758 8159

PROJECT
BROOKFIELD ESTATE SEWER EXTENSION
STAGE OR PHASE
LANDSCAPE FINISHES

DRAWING TITLE
LANDSCAPE FINISHES PLAN SHEET 2 OF 2

CLIENT
BROOKFIELD ESTATE PTY LTD

THE CONCEPTS OR CONTENT OF THIS DRAWING REMAIN THE PROPERTY OF EMERGE. THIS DRAWING SHALL ONLY BE USED FOR THE PURPOSE FOR WHICH IT WAS COMMISSIONED. UNAUTHORIZED REPRODUCTION, USE OR COPYING OF THIS DOCUMENT OR ITS CONTENTS WITHOUT THE WRITTEN PERMISSION OF EMERGE IS PROHIBITED. EMERGE ACCEPTS NO RESPONSIBILITY OR LIABILITY FOR ANY ACTION OR CONSEQUENCE FROM THE UNAUTHORIZED USE OR MISUSE OF THIS DRAWING AND ITS CONTENTS OR ANY ALTERATIONS OR AMENDMENTS MADE BY OTHER PARTIES. THIS DRAWING AND ITS CONTENTS SHALL BE DEEMED CONFIDENTIAL UNLESS AGREED WITH EMERGE.

DESIGNED BY **CE** PRELIM DESIGN REVIEWED BY **CE**
DRAWN BY **CE** PRELIM DWG REVIEWED BY **CE**

DATE INITIALLY DRAWN **03.08.20**

SCALE **1: 500 @ A1** METRES

DRAWING NUMBER **PGPM-07-402** REV **A**