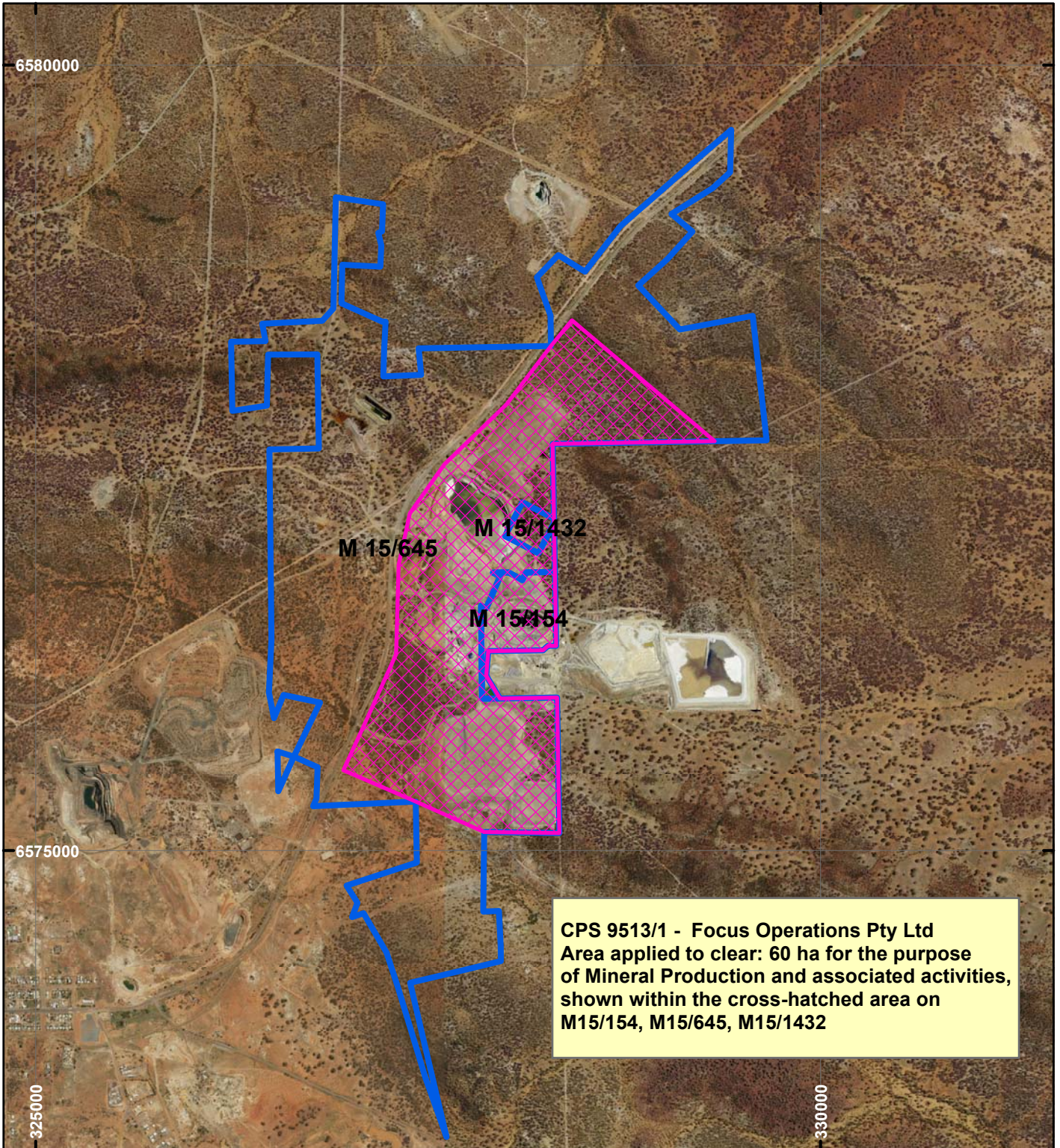
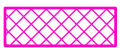


# CPS 9513/1 - Focus Operations Pty Ltd



**CPS 9513/1 - Focus Operations Pty Ltd**  
**Area applied to clear: 60 ha for the purpose**  
**of Mineral Production and associated activities,**  
**shown within the cross-hatched area on**  
**M15/154, M15/645, M15/1432**

## LEGEND

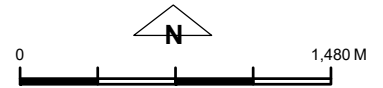


**Clearing Instruments**



**Mining Tenements**

Orthophotography sourced from Landgate



Scale 1:36,000

(Approximate when reproduced at A4)

Geocentric Datum Australia 1994

Note: the data in this map have not been projected. This may result in geometric distortion or measurement inaccuracies.

..... Date .....

Officer with delegated authority under Section 20 of the Environmental Protection Act 1986

Information derived from this map should be confirmed with the data custodian acknowledged by the agency acronym in the legend.

