

CPS 9520/1 - Map A

119°31'30.000"E

119°31'48.000"E

119°32'6.000"E

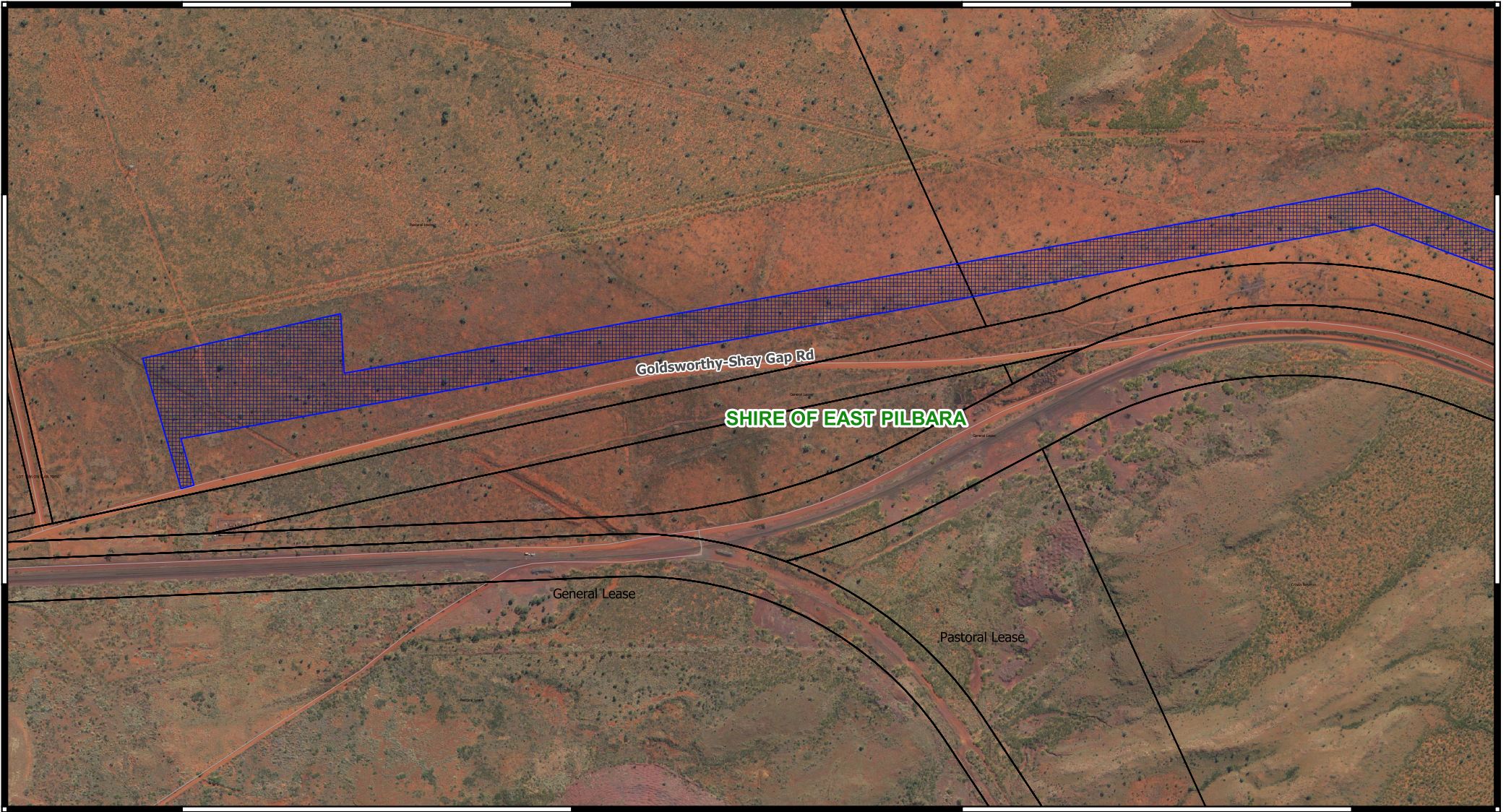
119°32'24.000"E

20°20'6.000"S

20°20'6.000"S

20°20'24.000"S

20°20'24.000"S




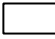


119°31'30.000"E

119°31'48.000"E

119°32'6.000"E

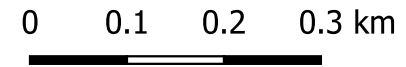
119°32'24.000"E

Legend

-  CPS areas applied to clear
-  Land Tenure LGATE - 226
-  Local Government Authorities
-  Local Rd - Other



MGA 94
Geocentric Datum of Australia 1994



1:6,000



GOVERNMENT OF
WESTERN AUSTRALIA