

# CPS 9520/1 - Map B

119°32'38.400"E

119°33'0.000"E

119°33'21.600"E

20°19'55.200"S

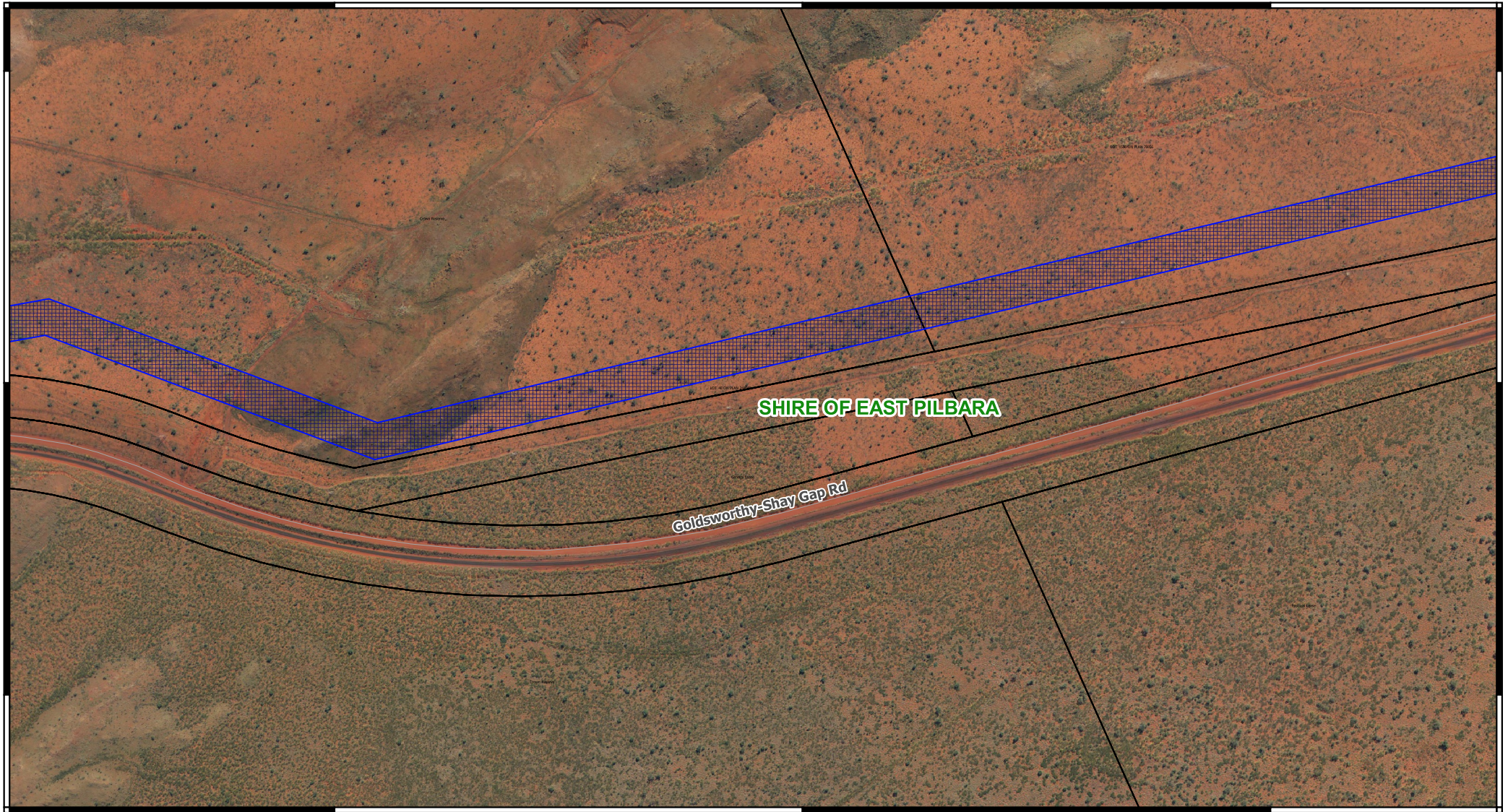
20°19'55.200"S

20°20'9.600"S

20°20'9.600"S

20°20'24.000"S

20°20'24.000"S

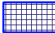





119°32'38.400"E

119°33'0.000"E

119°33'21.600"E

## Legend

-  CPS areas applied to clear
-  Land Tenure LGATE - 226
-  Local Government Authorities
-  Local Rd - Other



MGA 94  
Geocentric Datum of Australia 1994

0 0.1 0.2 0.3 km



1:6,000



GOVERNMENT OF  
WESTERN AUSTRALIA