

CPS 9520/1 - Map D

119°34'26.400"E

119°34'39.000"E

119°34'51.600"E

119°35'4.200"E

119°35'16.800"E

20°19'51.600"S

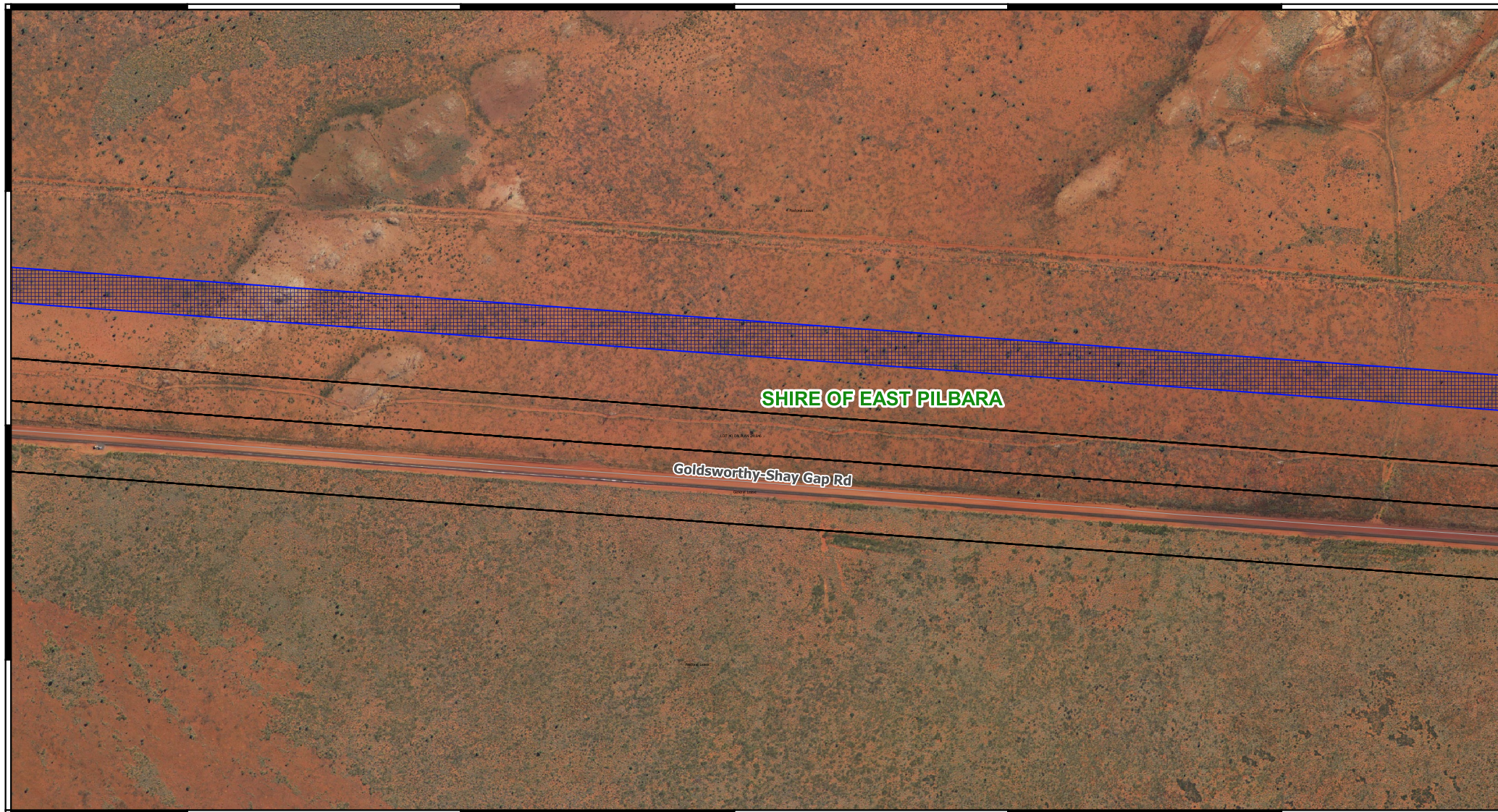
20°20'2.400"S

20°20'13.200"S

20°19'51.600"S

20°20'2.400"S

20°20'13.200"S



119°34'26.400"E

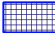



119°34'39.000"E

119°34'51.600"E

119°35'4.200"E

119°35'16.800"E

Legend

-  CPS areas applied to clear
-  Land TenureLGATE - 226
-  Local Government Authorities
-  Local Rd - Other



MGA 94
Geocentric Datum of Australia 1994

0 0.1 0.2 0.3 km



1:6,000



GOVERNMENT OF
WESTERN AUSTRALIA