

CPS 9520/1 - Map N

119°44'43.800"E

119°44'56.400"E

119°45'9.000"E

119°45'21.600"E

119°45'34.200"E

20°20'56.400"S

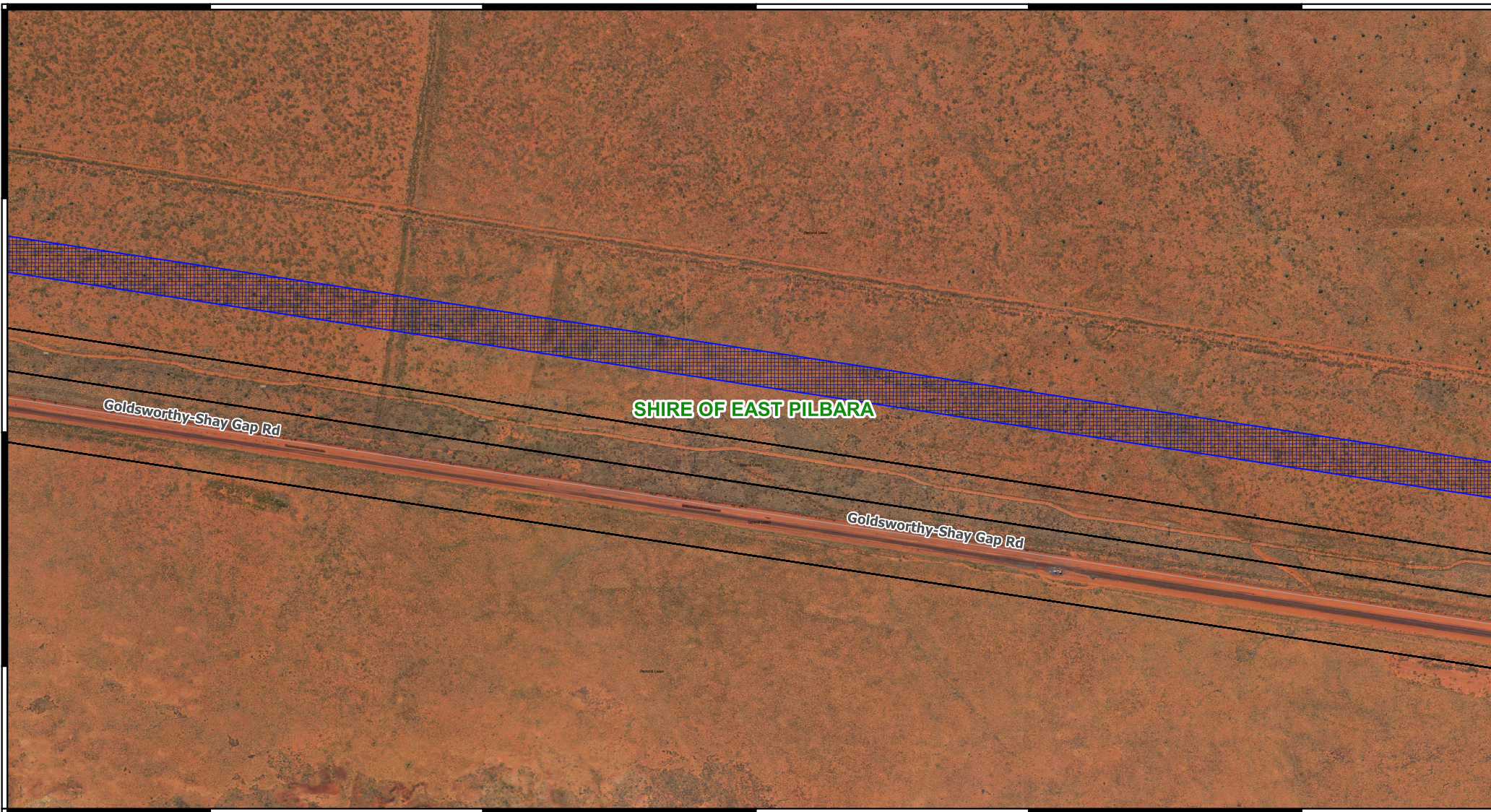
20°21'7.200"S

20°21'18.000"S

20°20'56.400"S

20°21'7.200"S

20°21'18.000"S



119°44'43.800"E

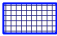
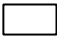


119°44'56.400"E

119°45'9.000"E

119°45'21.600"E

119°45'34.200"E

Legend

-  CPS areas applied to clear
-  Land Tenure LGATE - 226
-  Local Government Authorities
-  Local Rd - Other



MGA 94
Geocentric Datum of Australia 1994

0 0.1 0.2 0.3 km



1:6,000



GOVERNMENT OF
WESTERN AUSTRALIA