

CPS 9524/1 - Map (a)

120°52'22.440"E

120°52'52.320"E

120°53'22.200"E

33°20'31.200"S

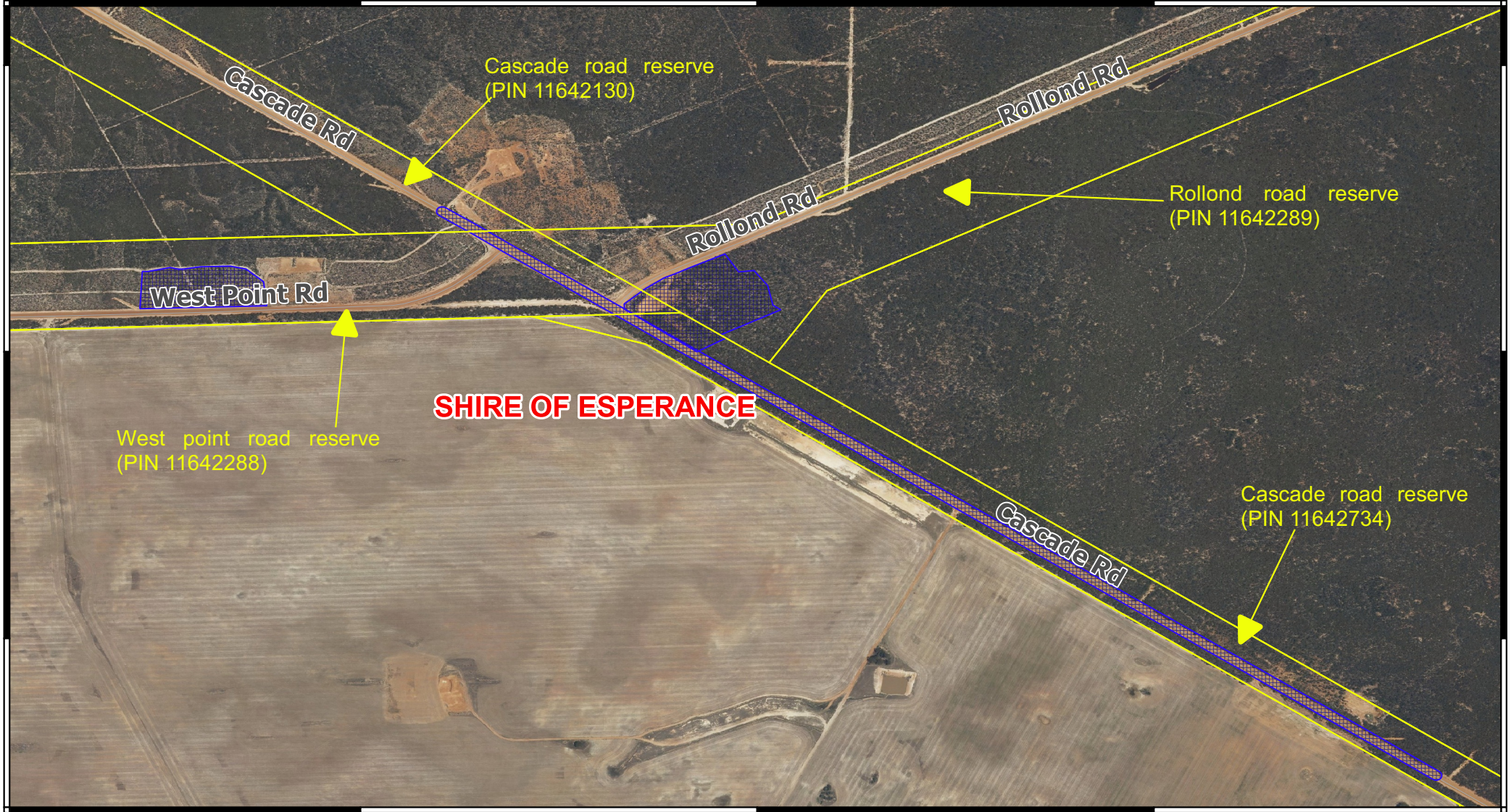
33°20'52.800"S

33°21'14.400"S

33°20'31.200"S

33°20'52.800"S

33°21'14.400"S


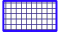



120°52'22.440"E

120°52'52.320"E

120°53'22.200"E

Legend

-  Land TenureLGATE - 226
-  CPS areas applied to clear
-  Local Government Authorities

Road Centrelines

-  Local Rd - Other

Image

0 250 500 750 1,000 m



MGA 94
Geocentric Datum of Australia 1994



1:8,000



GOVERNMENT OF
WESTERN AUSTRALIA