

# CPS 9543/1 - Context Map

115°45'18.000"E

115°45'36.000"E

115°45'54.000"E

115°46'12.000"E

115°46'30.000"E

32°6'54.000"S

32°7'12.000"S

32°7'30.000"S

32°7'48.000"S

32°8'6.000"S

32°8'24.000"S

32°6'54.000"S

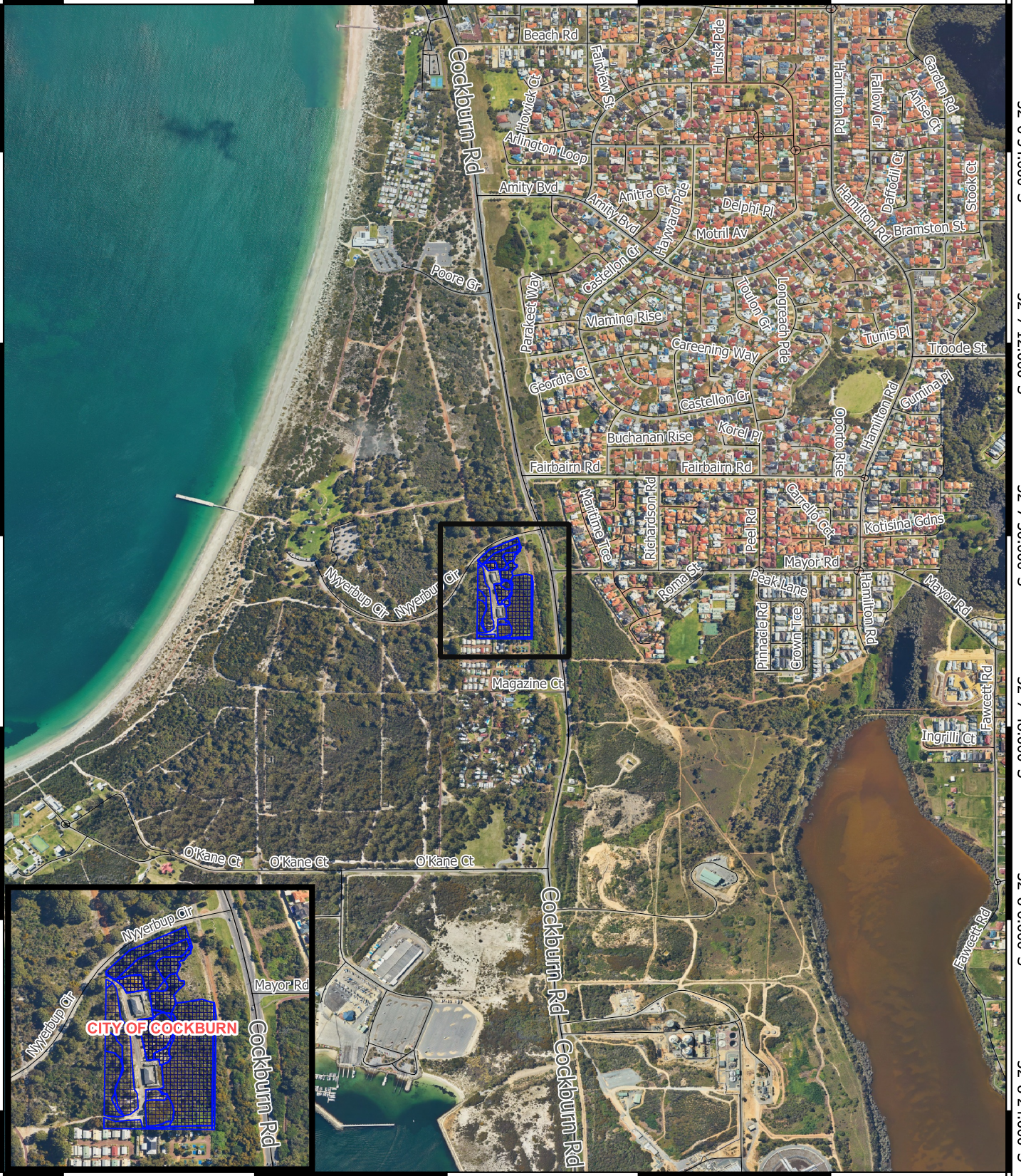
32°7'12.000"S

32°7'30.000"S

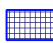

32°7'48.000"S

32°8'6.000"S



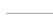
32°8'24.000"S



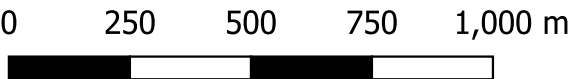
## Legend

-  CPS areas applied to clear
-  Local Government Authorities

## Road Centrelines

-  Highway
-  Local Rd - Sealed
-  Local Rd - Other

## Image



1:10,000

MGA 94  
Geocentric Datum of Australia 1994



GOVERNMENT OF  
WESTERN AUSTRALIA