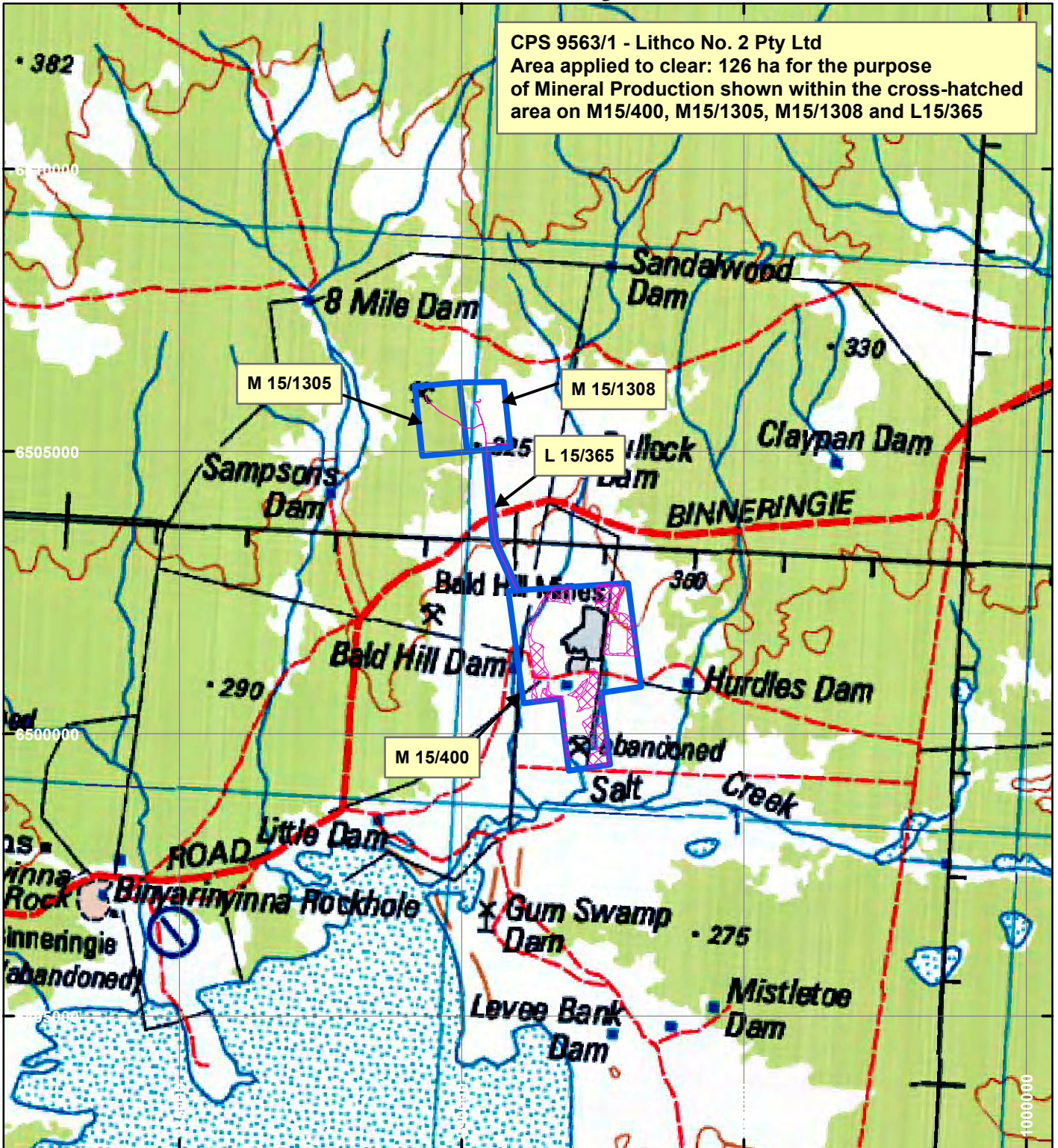


CPS 9563/1 - Lithco No.2 Pty Ltd

CPS 9563/1 - Lithco No. 2 Pty Ltd
 Area applied to clear: 126 ha for the purpose
 of Mineral Production shown within the cross-hatched
 area on M15/400, M15/1305, M15/1308 and L15/365



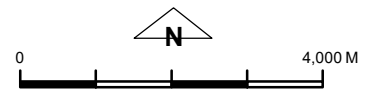
LEGEND



Clearing Instruments



Mining Tenements



Scale 1:100,000

(Approximate when reproduced at A4)

Geocentric Datum Australia 1994

Note: the data in this map have not been projected. This may result in geometric distortion or measurement inaccuracies.

..... Date

Officer with delegated authority under Section 20 of
 the Environmental Protection Act 1986

Information derived from this map should be
 confirmed with the data custodian acknowledged
 by the agency acronym in the legend.



WA Crown Copyright 2002