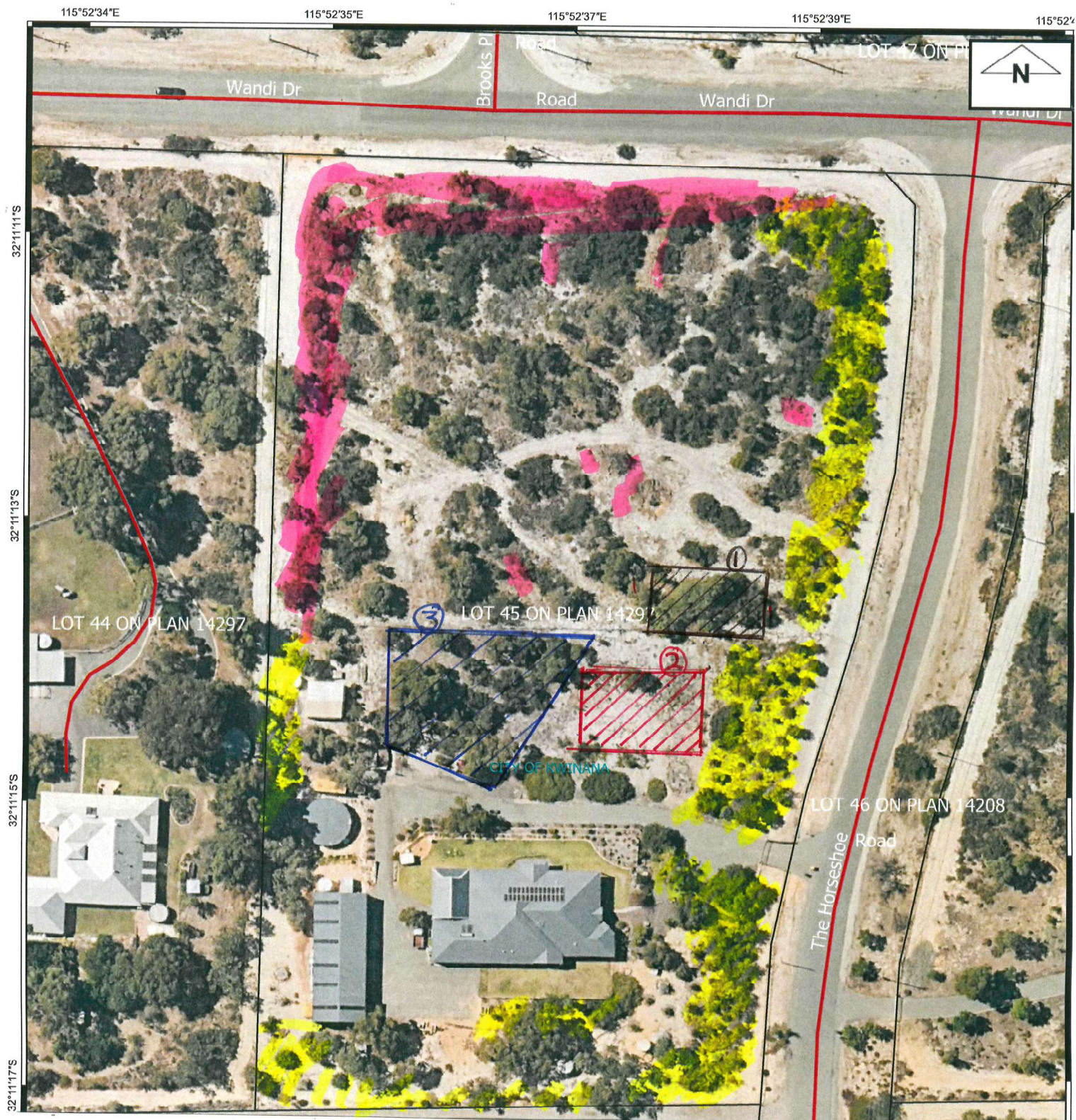







CPS 9574/1 - Supporting documentation - Map of proposal



Stephen & Fay Treeby - Application for Tree Removal to construct Ancillary Building.
133 The Horseshoe, Wandoo, 6167. Lot 45 on Plan 14297

Legend

-  1. Proposed clearing of 6 banksia trees and woolly bush
-  2. Family vegetable patch
-  3. Stand of Jarrah Trees and banksia trees
-  Continued tree and shrub planting programme
-  Future planting areas

Legend

base layers

-  Local Government Authorities
 -  Cadastre - LGATE 218
 -  Roads - Landgate 012
- Image

115°52'39"E