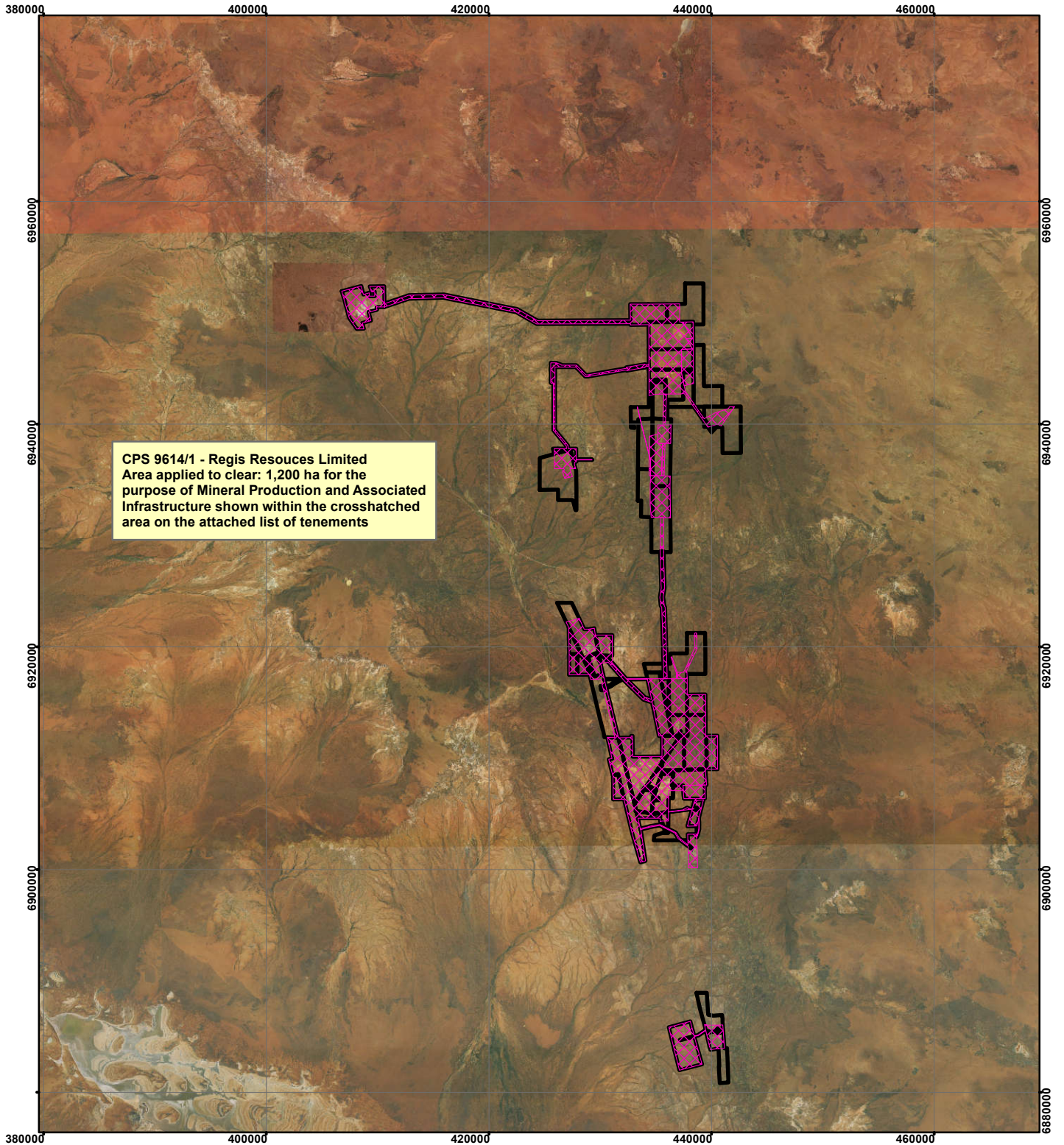




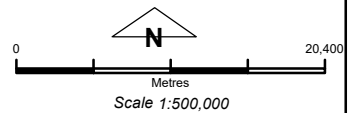
CPS 9614/1 - Regis Resources Limited



CPS 9614/1 - Regis Resources Limited
Area applied to clear: 1,200 ha for the purpose of Mineral Production and Associated Infrastructure shown within the crosshatched area on the attached list of tenements

Legend

-  Clearing Instruments
-  Mining Tenements



Geocentric Datum Australia 1994

Note: the data in this map have not been projected. This may result in geometric distortion or measurement inaccuracies.

..... Date

Officer with delegated authority under Section 20 of the Environmental Protection Act 1986

Information derived from this map should be confirmed with the data custodian acknowledged by the agency acronym in the legend.

