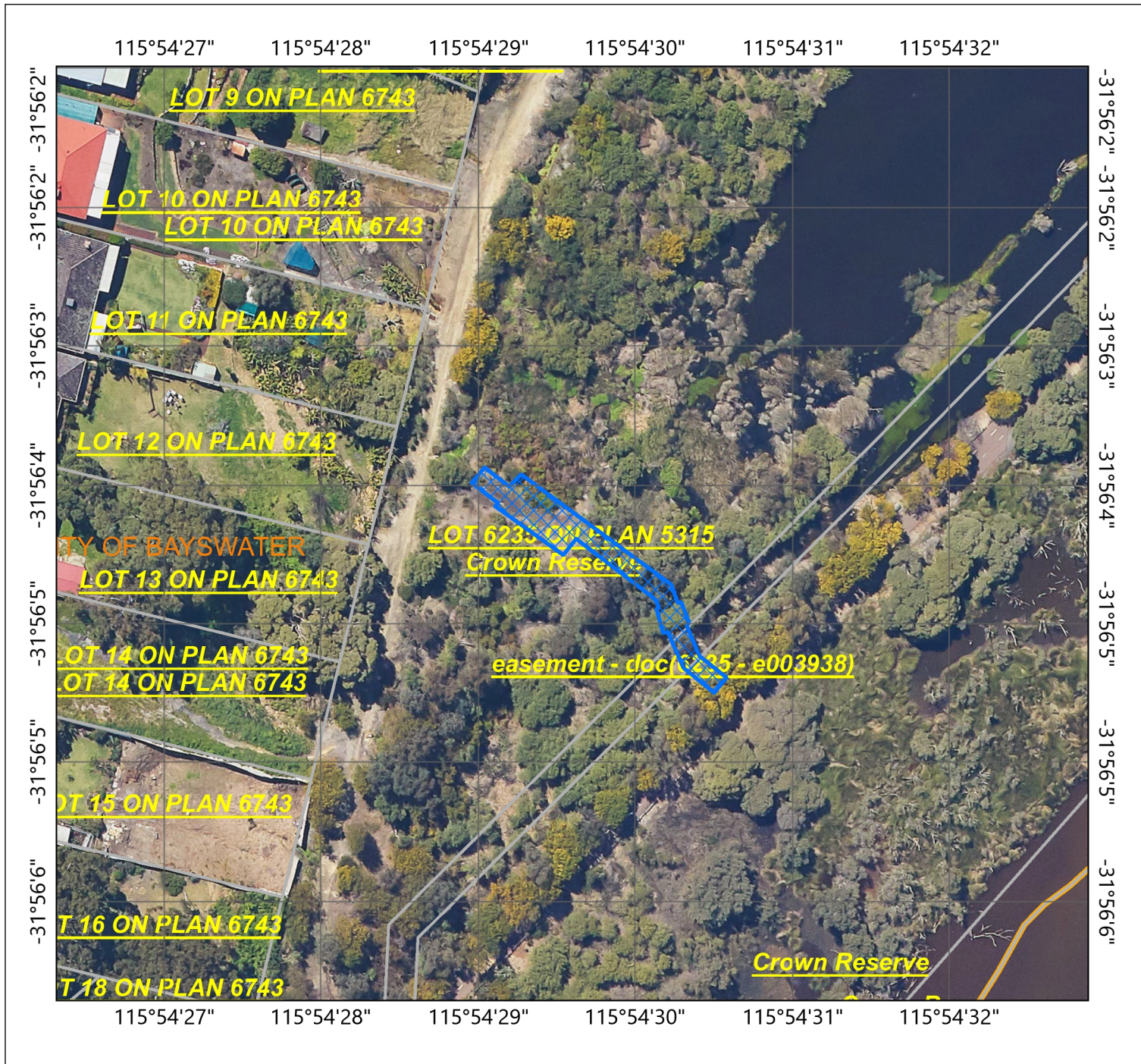
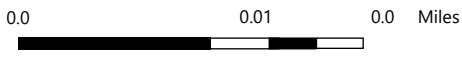


# CPS 9637/1 - Map



### Legend

-  CPS areas applied to clear
-  Land Tenure
-  Local Government Authorities

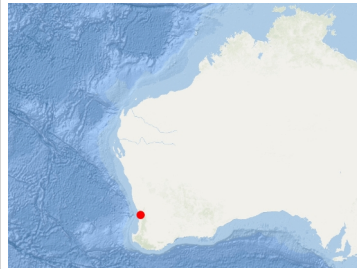


WGS\_1984\_Web\_Mercator\_Auxiliary\_Sphere

Disclaimer: This map is used as a generic static output for reference purposes. Information on this map may or may not be accurate, current, or otherwise reliable. While the Department of Water and Environmental Regulation, has made all reasonable efforts to ensure the accuracy of this data, the department accepts no responsibility for any inaccuracies and persons relying on this data do so at their own risk.

Copyright Department of Water and Environmental Regulation 2019. All Rights Reserved. All works and information displayed are subject to Copyright. For the reproduction or publication beyond that permitted by the Commonwealth Copyright Act 1968 written permission must be sought from the Agency.

### Locality Map



 Government of Western Australia  
Department of Water and Environmental Regulation