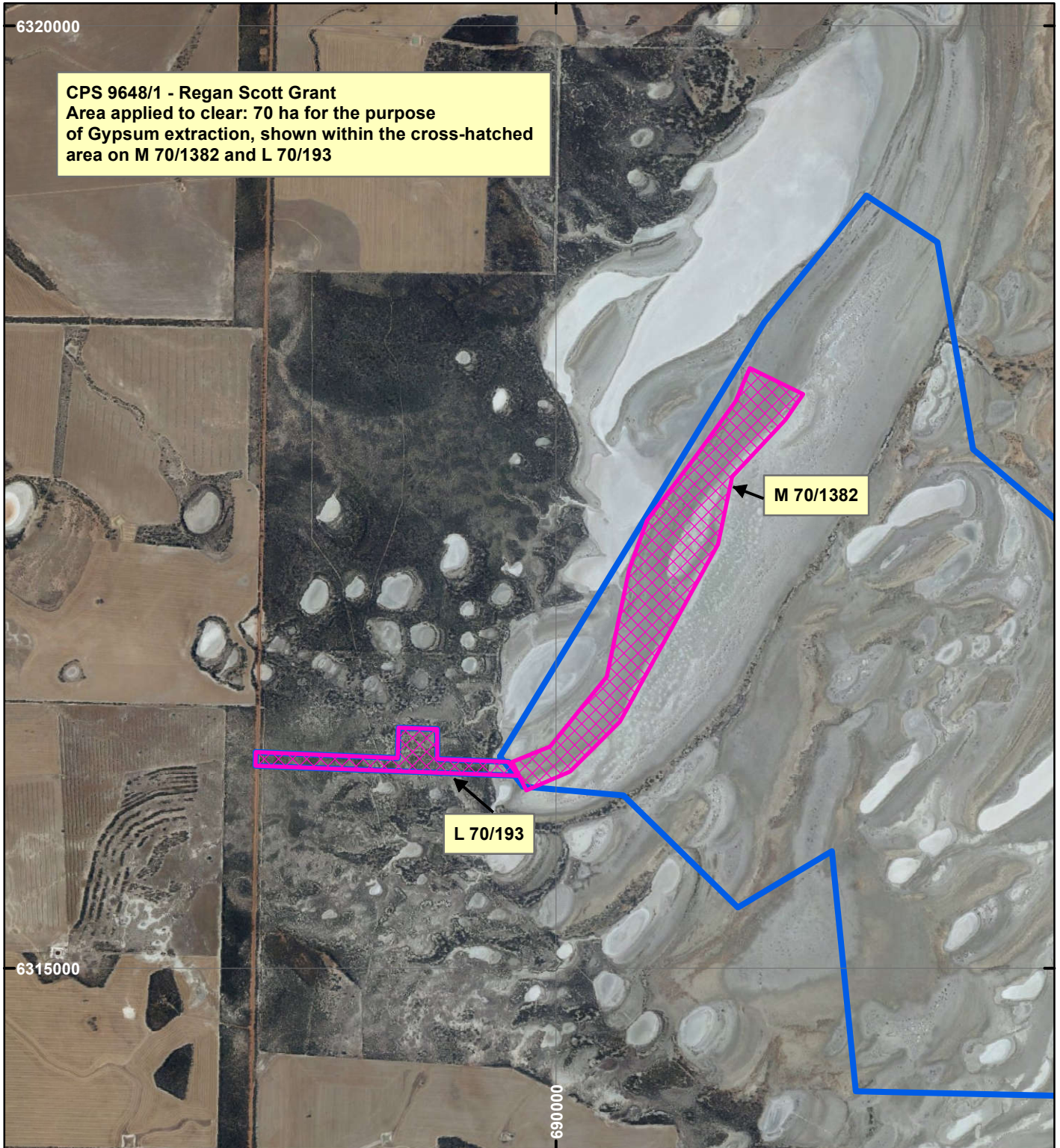


CPS 9648/1 - Regan Scott Grant

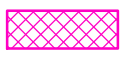



CPS 9648/1 - Regan Scott Grant
 Area applied to clear: 70 ha for the purpose
 of Gypsum extraction, shown within the cross-hatched
 area on M 70/1382 and L 70/193

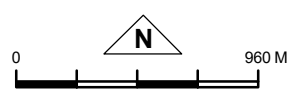
M 70/1382

L 70/193

LEGEND

-  Clearing Instruments
-  Mining Tenements

Orthophotography sourced from Landgate



Scale 1:30,000
 (Approximate when reproduced at A4)
 Geocentric Datum Australia 1994
 Note: the data in this map have not been
 projected. This may result in geometric
 distortion or measurement inaccuracies.

..... Date

Officer with delegated authority under Section 20 of
 the Environmental Protection Act 1986
 Information derived from this map should be
 confirmed with the data custodian acknowledged
 by the agency acronym in the legend.

