

# CPS 9698/1 - Supporting information - Information to support clearing permit application

## Access tracks and bore sites within Roebuck Station, Fraser Downs and Anna Plains

### Location

The proposed drilling sites are within 200 km of Broome (Figure 1) on the Roebuck Plains. They comprise of 8 sites and 8 tracks, 2 within Roebuck Plains, 3 within La Grange and 3 within Eighty Mile Beach. Within the Yawuru Native Title Area and Karajarri Native Title Area, all within the Shire of Broome.

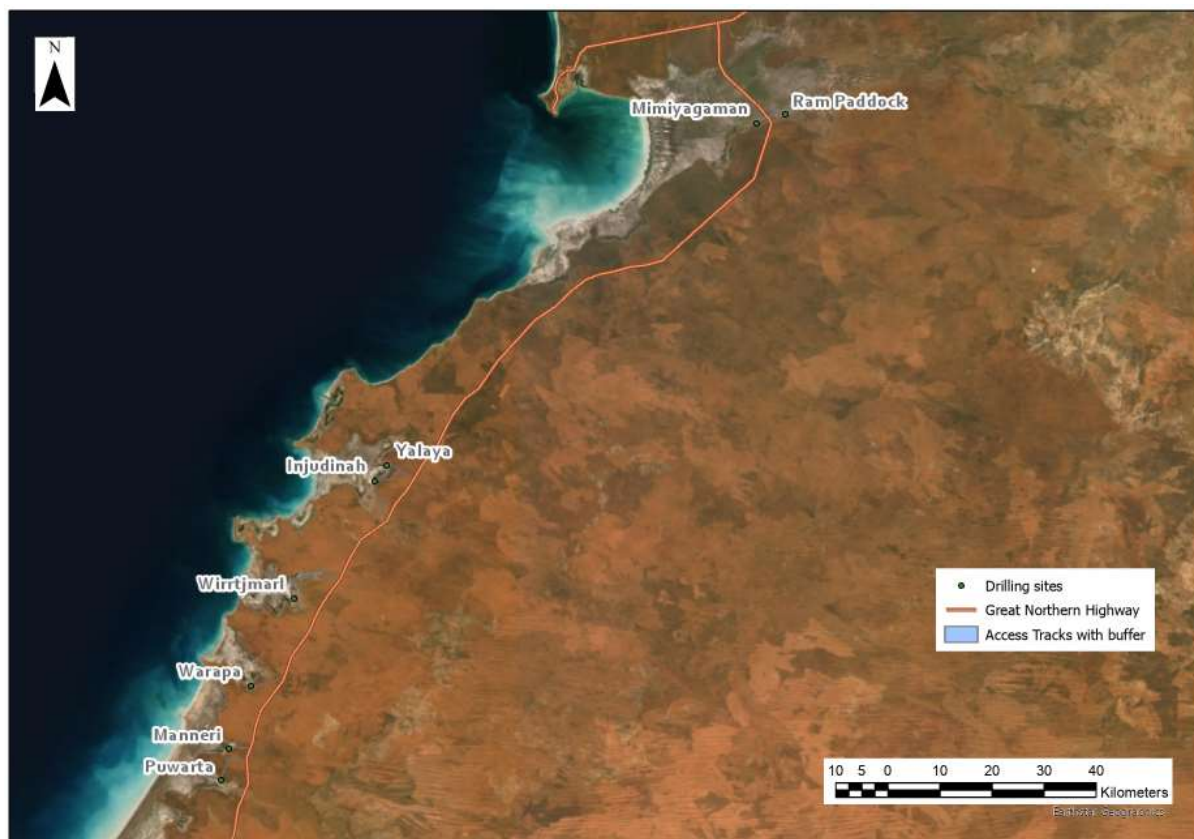


Figure 1: Location of proposed bore sites

Where possible drilling works will be carried out on clear land, and existing tracks will be utilized to minimize the amount of clearing of vegetation. There may be areas on the ground where vegetation may need to be cleared on drilling pads or on tracks if existing tracks are overgrown. Additionally, some widening of existing tracks may be required, this will be limited to a maximum of a 3 meter wide track.

A 40 meter wide corridor has been applied for in the permit along tracks and at drilling pads to make sure that the clearing permit covers existing tracks that have been sighted using satellite imagery. The corridor is intended to ensure that minimum vegetation is cleared by allowing travel and track maintenance in already

clear areas (i.e. to allow for creation of a track or pad in a clear area or driving around vegetation rather than having to clear vegetation if this permit was only for a 3 m wide corridor). Some sites have a larger corridor at the pad to ensure that any sensitive cultural sites can be avoided.

An area of 200 m<sup>2</sup> to 900 m<sup>2</sup> will be required around each bore site and where possible the clearing of vegetation will be avoided by using non-vegetated and any pre-existing cleared areas. Clearing of vegetation within the corridor will only be conducted where deemed necessary and unavoidable.

Details of the maximum potential clearing areas associated with the proposed bore sites are provided in The land details are summarized in Table 2 and Site locations of the bore pads and access tracks and shown in Figure 2 to Figure 6.

It is important to note that the Department has overestimated the clearing for the purposes of this clearing permit. It is anticipated that clearing will to be much less given most of the access tracks are in good condition and as highlighted, the bore sites have been chosen based on pre-existing cleared areas.

### **Land Authorization**

Communication and consultation has occurred and is continuing to occur with both the traditional and pastoral landowners. The Department has the relevant written approvals from the landowners.

The land details are summarized in Table 2 and Site locations of the bore pads and access tracks and shown in Figure 2 to Figure 6.

It is important to note that the Department has overestimated the clearing for the purposes of this clearing permit. It is anticipated that clearing will to be much less given most of the access tracks are in good condition and as highlighted, the bore sites have been chosen based on pre-existing cleared areas.

### **Land Authorization**

Communication and consultation has occurred and is continuing to occur with both the traditional and pastoral landowners. The Department has the relevant written approvals from the landowners.

Table 1: Potential clearing areas associated with proposed bore sites

Proposed Site	Estimated clearing area for pads (m <sup>2</sup> ) <sup>^</sup>	Track Length from sealed road (m)	Estimated clearing for tracks (m <sup>2</sup> )	Estimated clearing area for tracks and pads (m <sup>2</sup> )*	Comments
Injudinah	0	8676	780.84	780.84	Most sections of track look to be good condition, site appears clear of vegetation
Manneri	200	4509	2705.4	2905.4	Most sections of track and pad are in good condition
Mimiyagaman	200	2724	245.16	445.16	Most sections of track look to be good condition
Puwarta	200	8222	4933.2	5133.2	Most sections of track and pad are in good condition
Ram Paddock	200	4150	373.5	573.5	Most sections of track look to be good condition
Warapa	200	6293	0	200	Very good access track, likely no clearing for access
Wirrtjmarl	200	14094	8456.4	8656.4	Parts of track may be overgrown in parts and require maintenance, upgrade, or new clearing. However alternate access with no clearing may be possible
Yalaya	200	5730	515.7	715.7	Most sections of track and pad are in good condition
<b>Total (m<sup>2</sup>)</b>	1400		18010.2	19410.2	
<b>Total (ha)</b>	0.14		1.8	<b>1.94</b>	

\*Clearing is estimated from aerial photos as a percentage of existing tracks that may require maintenance, the resulting length is multiplied by a 3 m wide track for the estimated area. As most tracks are probably accessible on the ground, the clearing area is likely to be much less

<sup>^</sup>The maximum pad size has been estimated as 10 m x 20 m however these are expected to be smaller and vegetation clearing will be avoided as much as possible

*Table 2: Land details associated with proposed bore sites*

Bore Name	Coordinates (GDA94, Zn51)		Native Title Owners	Shire	Land use	Lot No.	Land Type	Pastoral Station
	X	Y						
Injudinah	381391	7938723	Karajarri	Broome	Reserve	R 11175	Crown Reserve	N/A
Manneri	353285.9	7887321	Karajarri	Broome	Livestock grazing	LPL N050392	Crown Lease	Anna Plains
Mimiyagaman	454877.4	8007264	Yawuru	Broome	Livestock grazing	LPL N049900	Crown Land	National Indigenous Pastoral Enterprises pty ltd
Puwarta	351976.8	7881294	Karajarri	Broome	Livestock grazing	LPL N050392	Crown Lease	Anna Plains
Ram Paddock	460193.9	8008875	Yawuru	Broome	Livestock grazing	LPL N049900	Crown Lease	Roebuck Plains
Warapa	357551	7899232	Karajarri	Broome	Livestock grazing	LPL N049664	Crown Lease	Frazier Downs
Wirrtjmarl	365806	7916026	Karajarri	Broome	Livestock grazing	LPL N049664	Crown Lease	Frazier Downs
Yalaya	383760	7941556	Karajarri	Broome	Reserve	R 11175	Crown Reserve	N/A

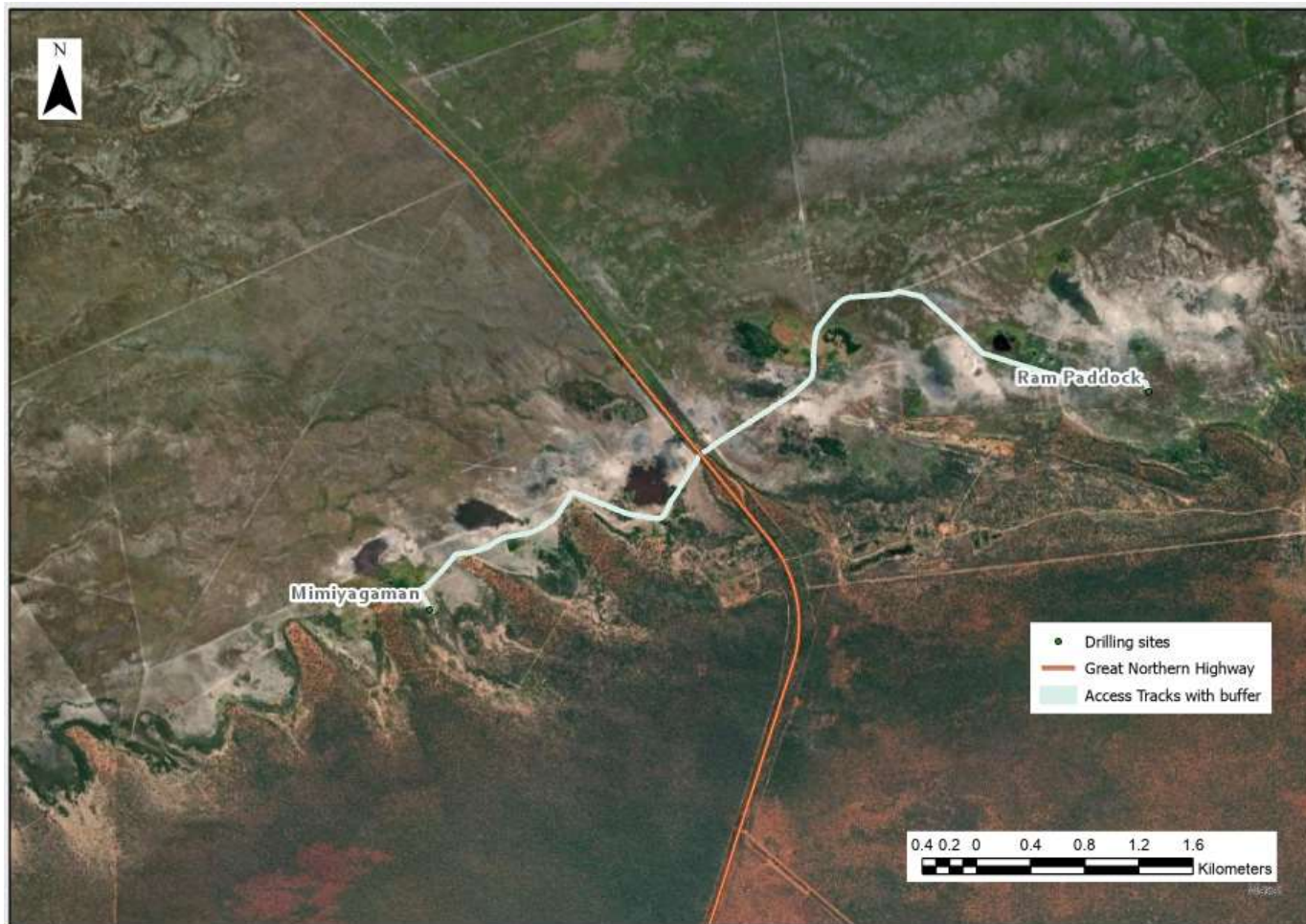


Figure 2: Access for Mimiyaqaman and Ram Paddock

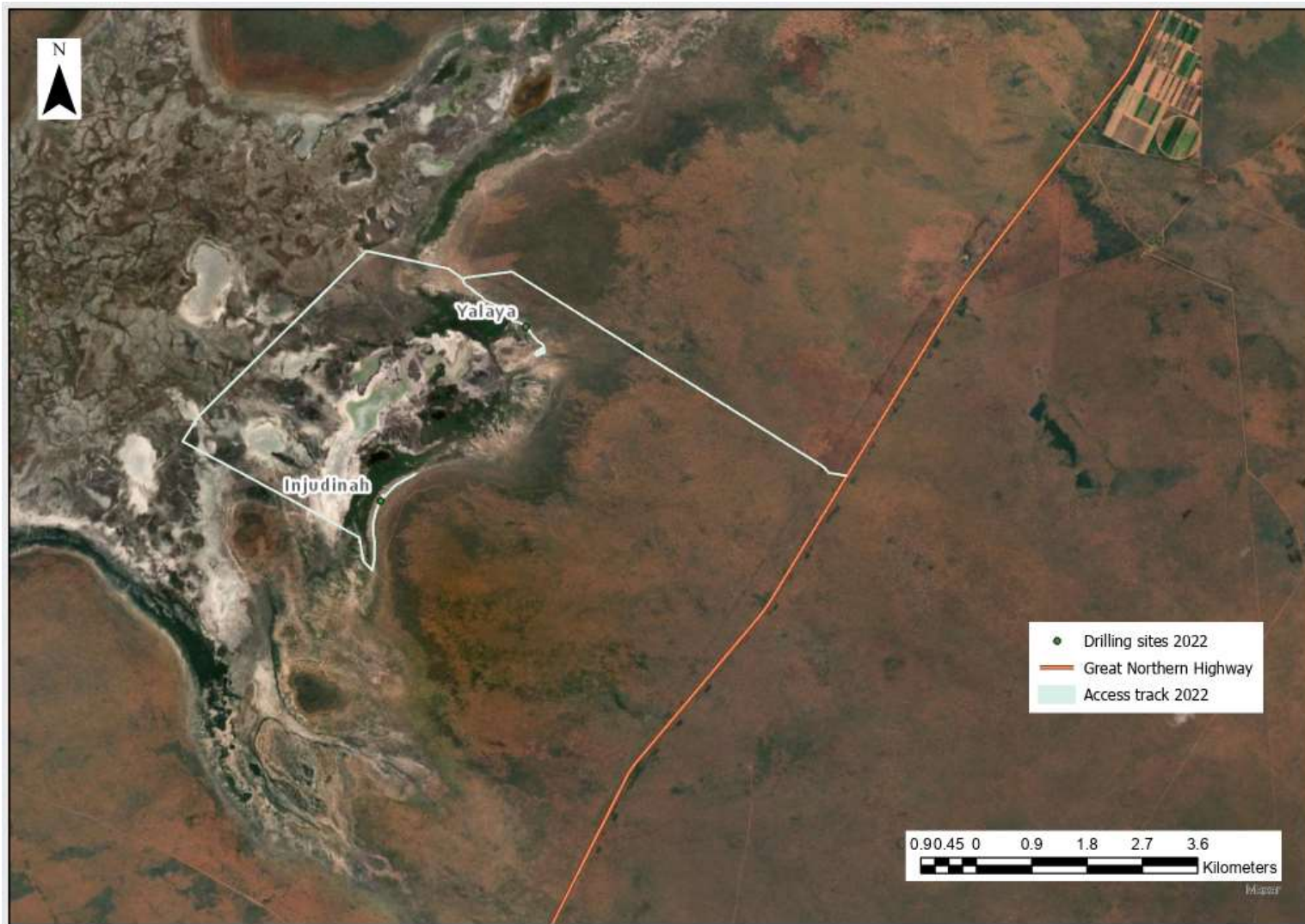


Figure 3: Access for Yalaya and Injudinah

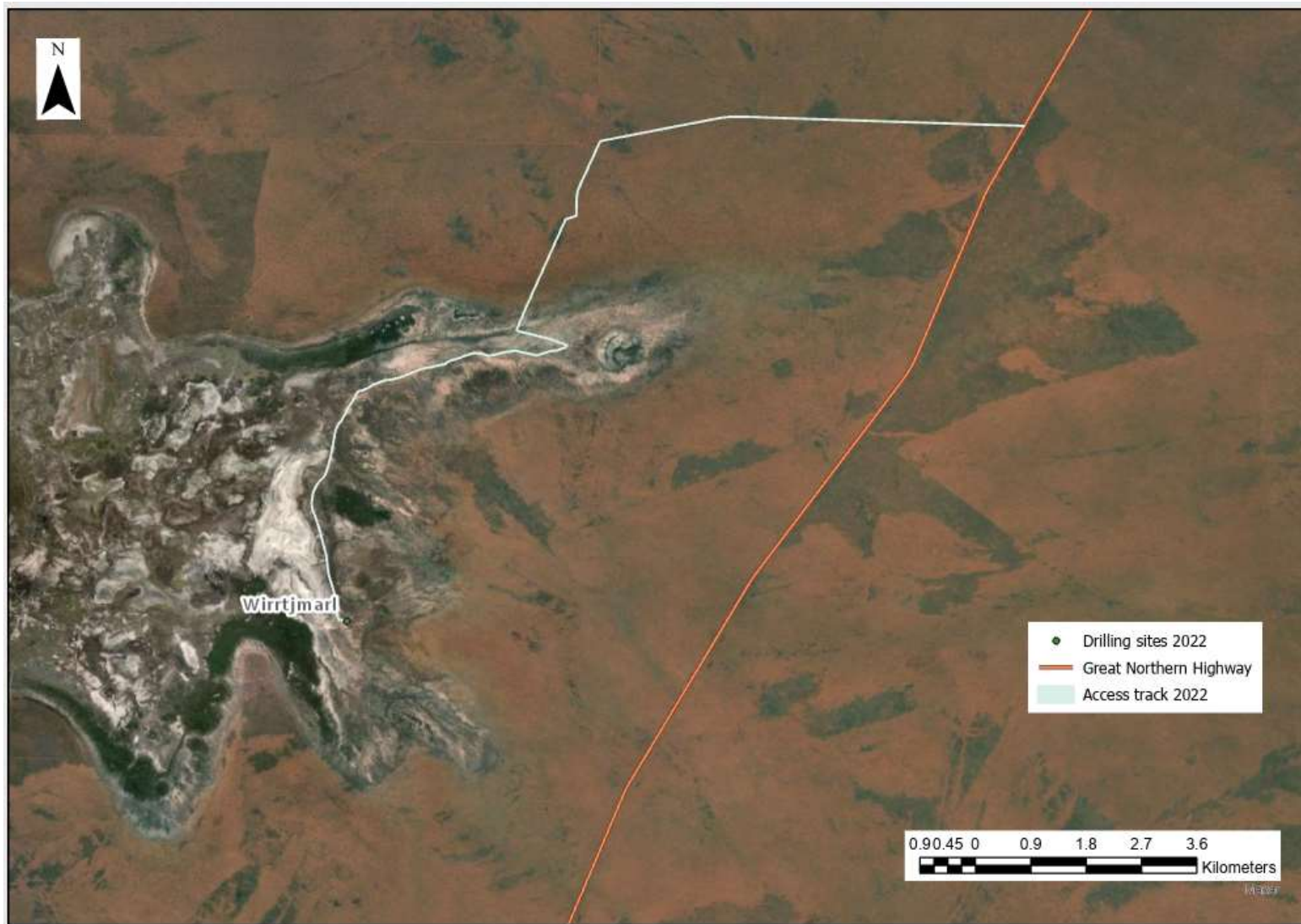


Figure 4: Access for Wirtjmarl

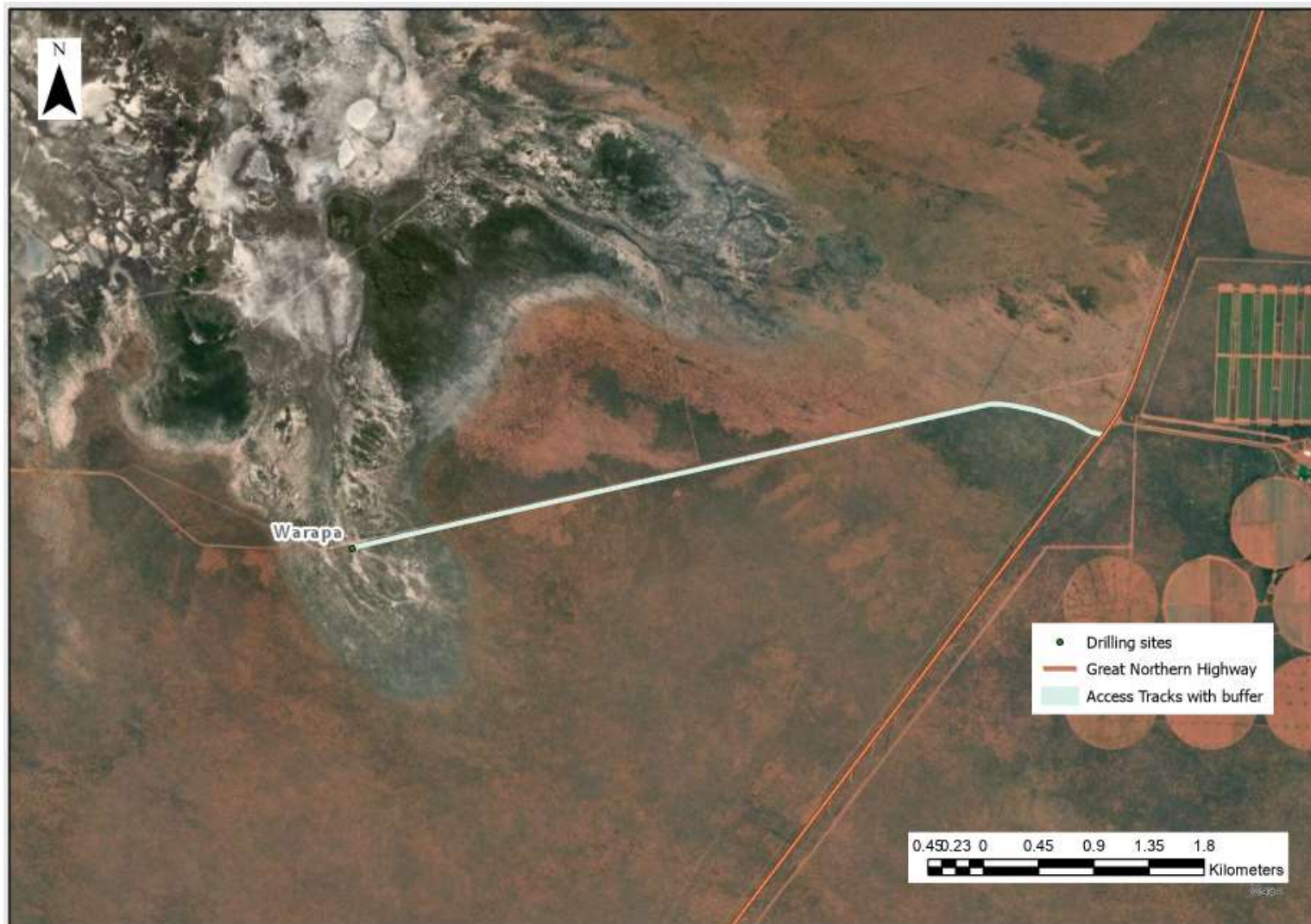


Figure 5: Access for Warapa

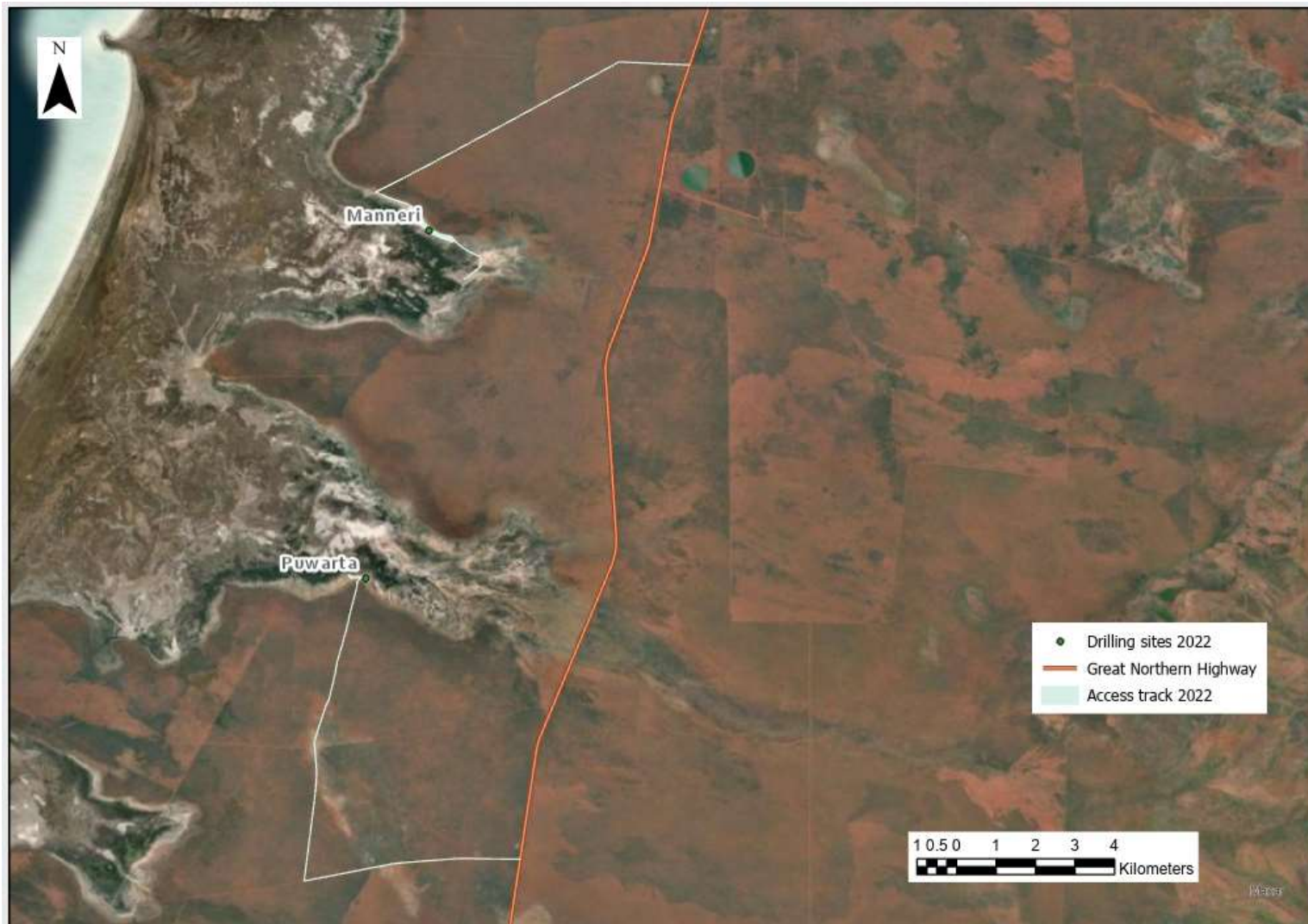


Figure 6: Access for Manneri and Puwarta