

23rd November 2022



Del Botanics

PO Box 119
Mt Helena, WA 6082

Ph: [REDACTED]

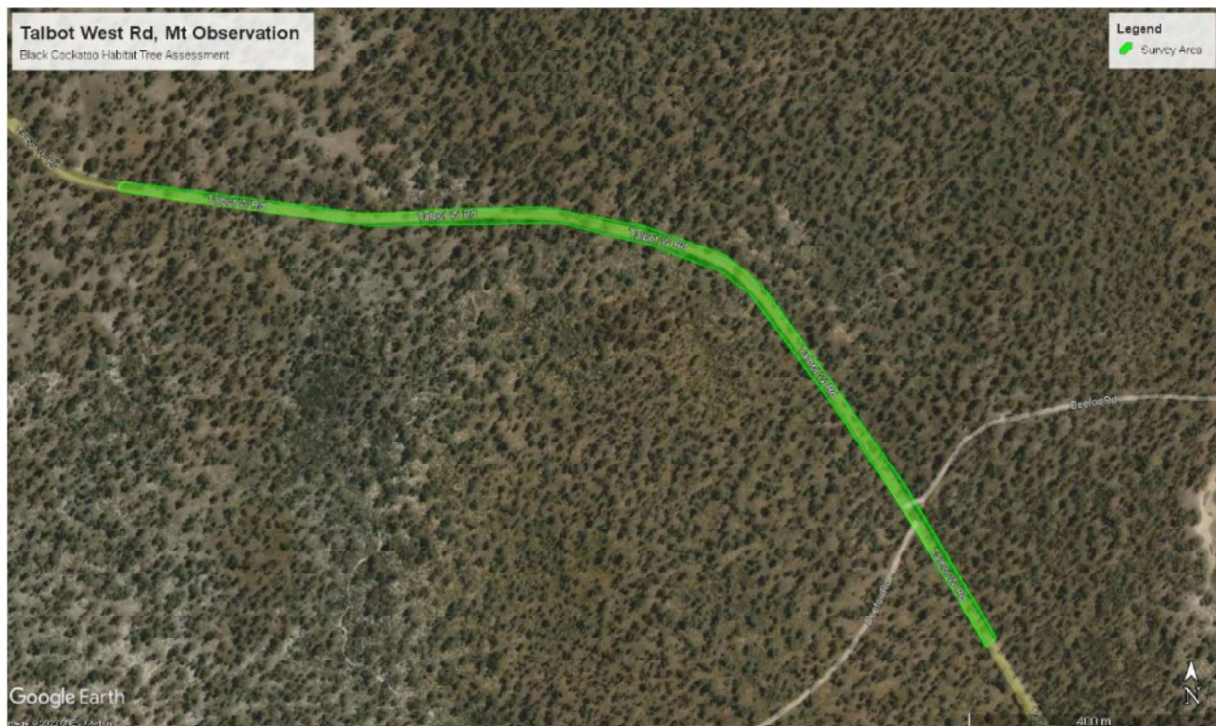
Email: [REDACTED]

ABN: 90910128697

Dear [REDACTED],

On 26th October 2022 a Black Cockatoo Habitat Tree Assessment was undertaken along Talbot West Road, Mt Observation, between SLK 12.12 and SLK 13.15. The site location is shown on **Figure 1** below.

Figure 1: Site location.



Background

A Black Cockatoo Habitat Tree Assessment records trees which create potential habitats for Black Cockatoo species. The assessment is the primary technique used to inform decisions on significant impact for Black Cockatoos.

York is located within the Wheatbelt area that is identified as known Breeding habitat for Carnaby's cockatoo (*Calyptorhynchus latirostris*). This species generally occurs in woodland or forest and nests in hollows in live or dead trees of salmon gum (*Eucalyptus salmonophloia*), Wandoo (*Eucalyptus wandoo*), Tuart (*Eucalyptus gomphochelea*), Jarrah (*Eucalyptus marginata*), Flooded gum (*Eucalyptus rudis*), York gum (*Eucalyptus loxophleba* subsp. *loxophleba*), Powderbark (*E. accedens*), Karri (*Eucalyptus diversicolor*) and Marri (*Corymbia calophylla*).

Black Cockatoos breed in large hollow-bearing trees, generally within woodlands or forests. Hollows form as trees age with only old trees having suitable size hollows. The size of the tree, measured as the diameter at breast height (DBH), is a useful indicator of the hollow-bearing potential of the tree. Habitat trees considered potentially suitable for Black Cockatoo breeding have a DBH greater than 500 mm (for salmon gum and wandoo, suitable DBH is 300 mm). All native trees with the described DBH parameters were recorded as part of this assessment.

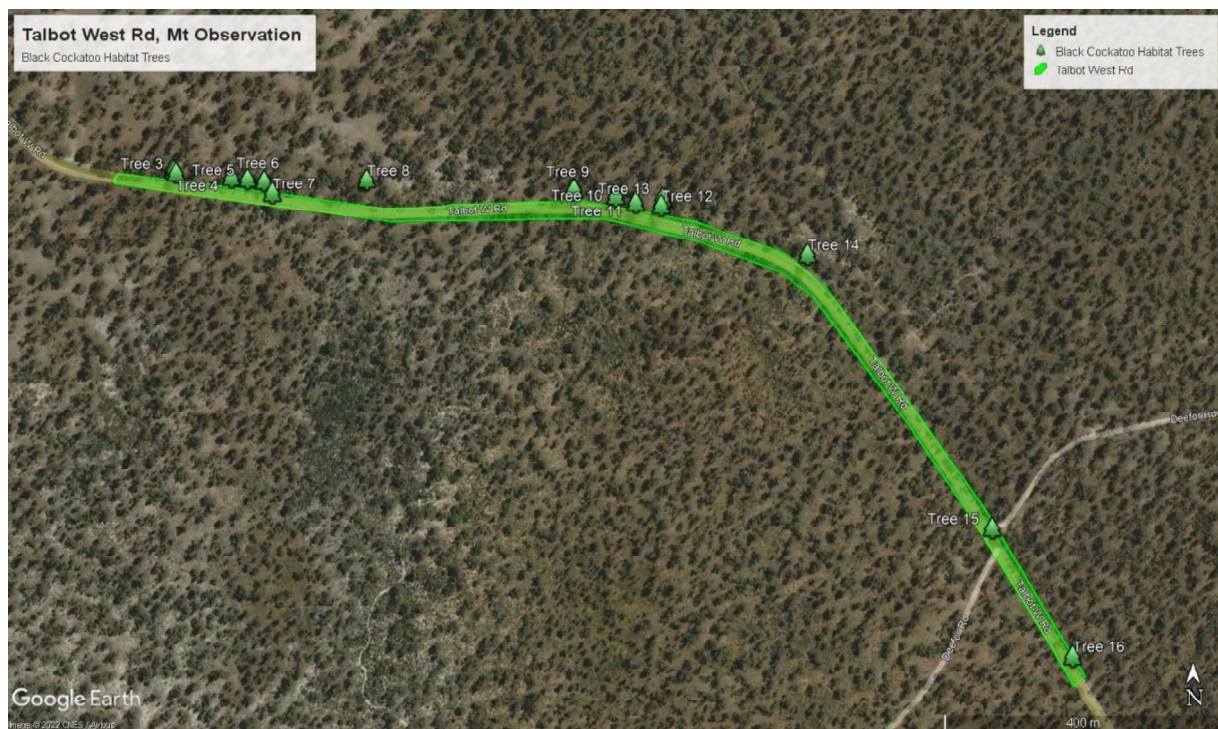
Habitat Tree Assessment

The assessment was undertaken by measuring each native tree and recording those with a DBH greater than 500 mm (300 mm for salmon gum and wandoo). Visual observations from ground level and materials (including plant samples, scats, and feathers) collected from the site were used to identify the tree species, health, hollow size and height, including signs of potential cockatoo use.

Results

In total, sixteen trees were recorded as potential Black Cockatoo Habitat trees due to their size. Four trees (25%), consisting of 2 Jarrah and 2 Wandoo, contained hollows large enough to support Black Cockatoo breeding. The results of the survey are provided in **Appendix A** and shown on **Figure 2** below.

Figure 2 – Habitat Tree Locations



Conclusion

Talbot West Road, Mt Observation, (SLK 12.12 to SLK 13.15) contains sixteen potential Black Cockatoo Habitat trees, consisting of 10 *Eucalyptus wandoo* (Wandoo), 3 *Eucalyptus marginata* (Jarrah) and 3 *Corymbia calophylla* (Marri), with a DBH greater than 500mm. Four trees, 2 Jarrah and 2 Wandoo contain hollows large enough to support Black Cockatoo breeding. 60% of the trees recorded contain hollows.

It is recommended to avoid and protect the 4 trees (Tree 4, 12, 14 and 16)) with large hollows and where possible avoid the removal of trees with a DBH over 500mm. If trees are removed, the Shire of York could consider an offset for any removals with a 3 to 1 planting ratio.

Results of the Black Cockatoo Habitat Tree Assessment are provided in **Appendix A** and shown on **Figure 2**.

Information regarding Appendix A

Hollows	Information
Large Hollow	< 20cm entrance
Medium Hollow	10-20cm entrance
Small Hollow	5-10cm entrance

Tree Health	Information
Very Good	Tree overall health is excellent
Good	Tree presents minor signs of stress
Degraded/Stressed	Tree has some markers of its health deteriorating
Dead	Tree has no alive branches




na = not applicable




Kind Regards






Director
Del Botanics Environmental Consulting

**APPENDIX A:
BLACK COCKATOO HABITAT TREES RECORDED ALONG TALBOT ROAD WEST, MT OBSERVATION BETWEEN SLK 12.12
AND SLK 13.15**

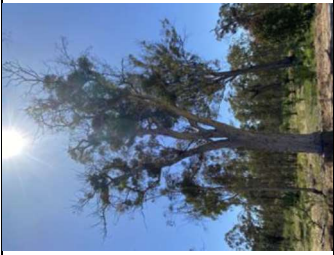
Tree No.	Photo	Tree species	Location (Eastings/Northings) WG84 (50)	Health (Very Good, Good, Stressed, Dead)	Approx. height (m)	DBH (mm)	Hollows	Comments
1		<i>Eucalyptus wandoo</i>	50 J 458133.55 6461436.093	Very Good	30	783.44	4 small 1 medium	na
2		<i>Eucalyptus wandoo</i>	50 J 458131.64 6461438.670	Very Good	25	757.96	5 small	na
3		<i>Corymbia calophylla</i>	50 J 458136.32 6461432.984	Very Good	25	627.39	na	na

4		<i>Eucalyptus marginata</i>	50 1458216.64 6461426.346	Dead	25	1296.18	4 large 5 small	na
5		<i>Corymbia calophylla</i>	50 1458239.11 6461424.547	Very Good	25	636.94	na	na
6		<i>Corymbia calophylla</i>	50 1458263.26 6461421.651	Very Good	30	834.39	na	na

7		<i>Eucalyptus wandoo</i>	50 J 458275.21 6461404.299	Good	25	1003.18	6 small	na
8		<i>Eucalyptus wandoo</i>	50 J 458410.48 6461422.976	Very Good	30	1038.22	6 medium 2 small	na
9		<i>Eucalyptus wandoo</i>	50 J 458705.50 6461408.096	Very Good	20	321.66	na	na

10		<i>Eucalyptus wandoo</i>	50 J 458764.17 6461399.475	Very Good	30	853.50	1 medium 5 small	na
11		<i>Eucalyptus wandoo</i>	50 J 458792.24 6461390.730	Very Good	30	955.41	1 medium 3 small	na
12		<i>Eucalyptus wandoo</i>	50 J 458828.27 6461385.958	Very Good	30	1114.65	10 small 3 medium 1 large	na

13		<i>Eucalyptus marginata</i>	50 J 458829.97 6461396.083	Very Good	30	735.67	na	na
		<i>Eucalyptus marginata</i>	50 J 459034.31 6461318.098	Very Good	30	1324.84	1 large	na
14		<i>Eucalyptus wandoo</i>	50 J 459295.12 6460936.844	Very Good	25	853.50	na	2 main trunks same size
15								

		<i>Eucalyptus wandoo</i>	50 J 459410 6460756	Very Good	25	1091	5 small 2 medium 2 large	na
--	---	--------------------------	------------------------	-----------	----	------	--------------------------------	----