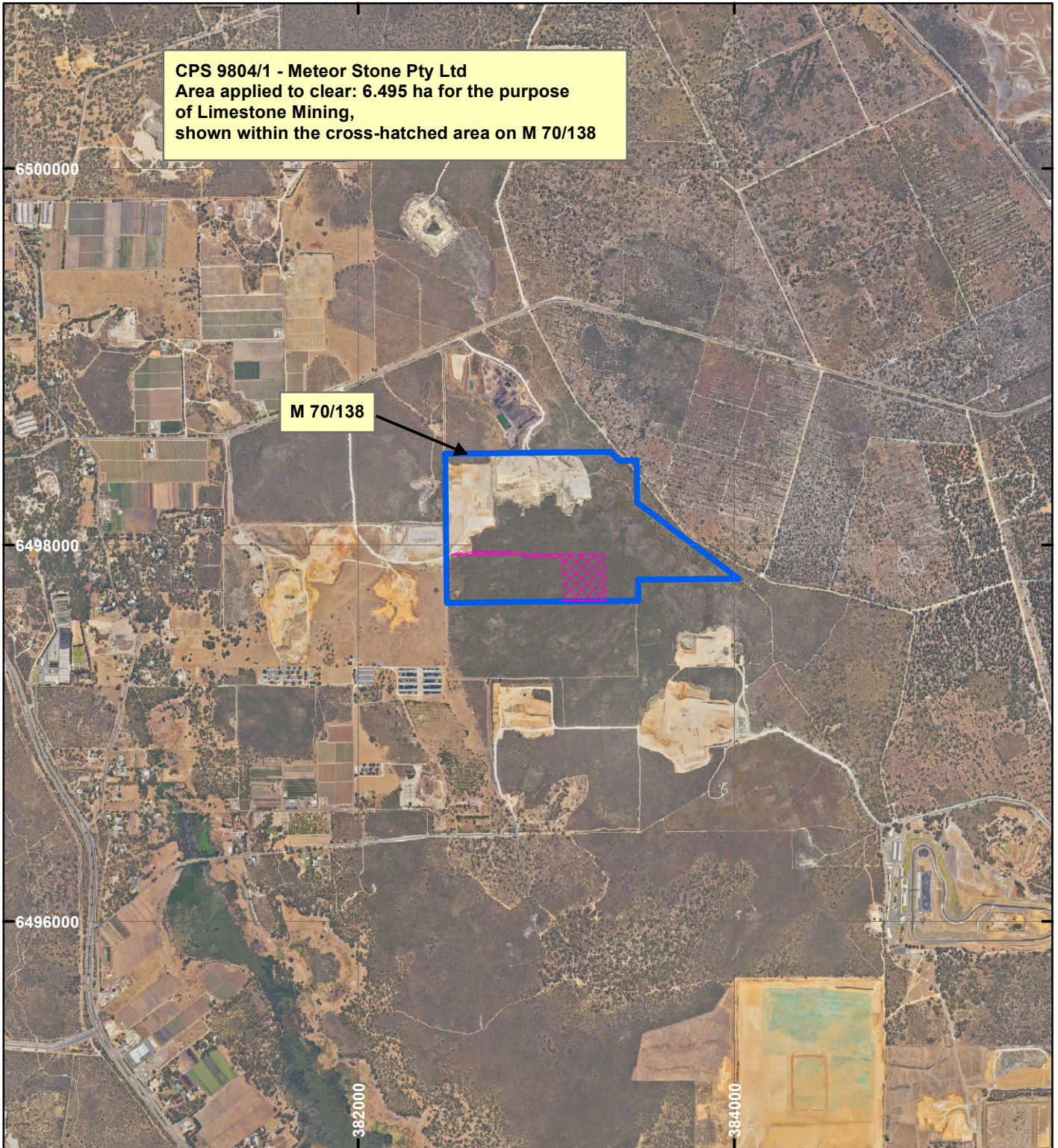


CPS 9804/1 - Meteor Stone Pty Ltd

CPS 9804/1 - Meteor Stone Pty Ltd
Area applied to clear: 6.495 ha for the purpose
of Limestone Mining,
shown within the cross-hatched area on M 70/138

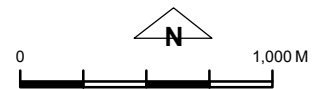


LEGEND

 Clearing Instruments

 Mining Tenements

Orthophotography sourced from Landgate



Scale 1:30,000

(Approximate when reproduced at A4)

Geocentric Datum Australia 1994

Note: the data in this map have not been projected. This may result in geometric distortion or measurement inaccuracies.

..... Date

Officer with delegated authority under Section 20 of
the Environmental Protection Act 1986

Information derived from this map should be
confirmed with the data custodian acknowledged
by the agency acronym in the legend.



WA Crown Copyright 2002