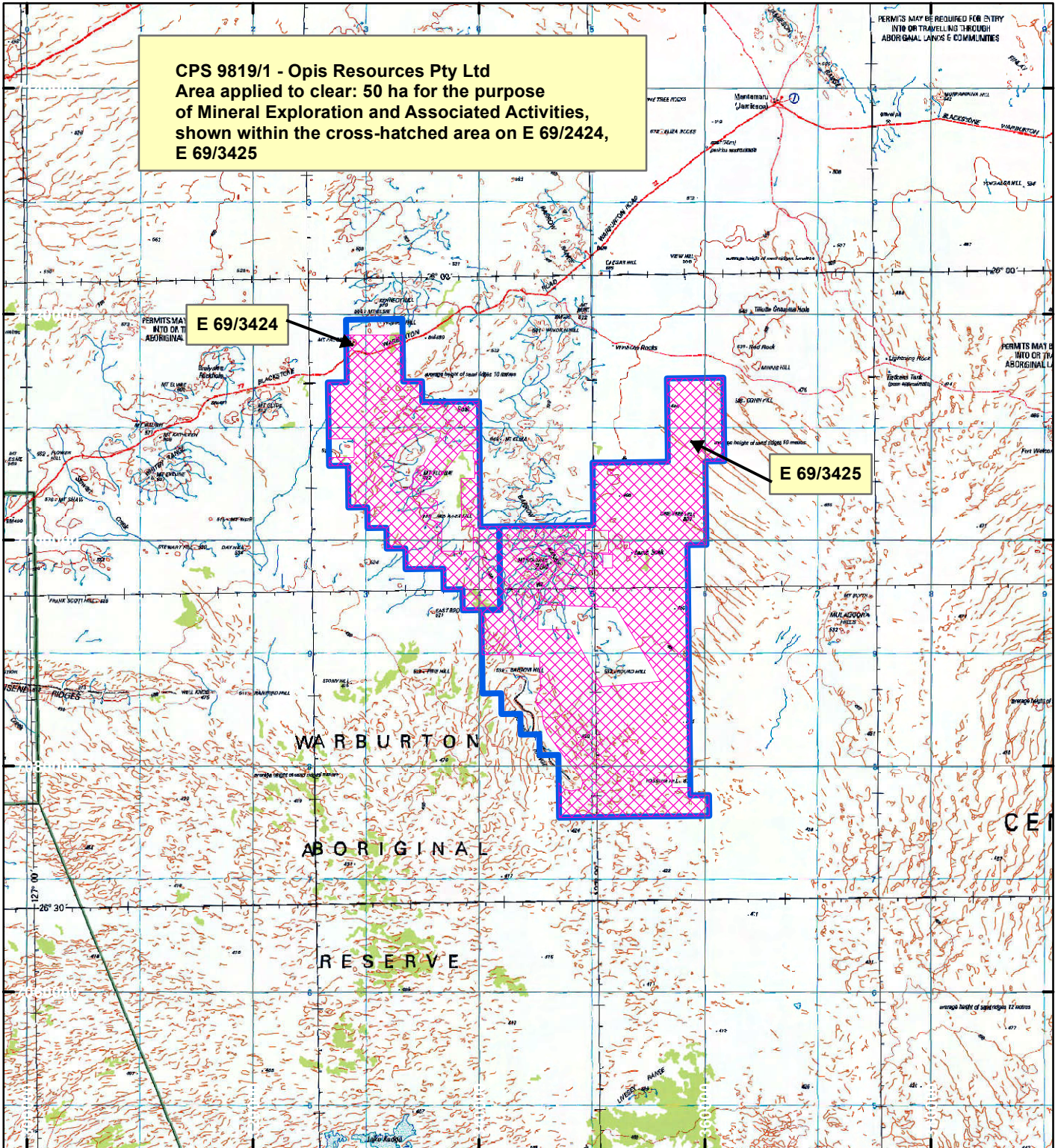


CPS 9819/1 - Opus Resources Pty Ltd

CPS 9819/1 - Opus Resources Pty Ltd
 Area applied to clear: 50 ha for the purpose
 of Mineral Exploration and Associated Activities,
 shown within the cross-hatched area on E 69/2424,
 E 69/3425



LEGEND



Clearing Instruments



Mining Tenements



Scale 1:500,000

(Approximate when reproduced at A4)

Geocentric Datum Australia 1994

Note: the data in this map have not been projected. This may result in geometric distortion or measurement inaccuracies.

..... Date

Officer with delegated authority under Section 20 of
 the Environmental Protection Act 1986

Information derived from this map should be
 confirmed with the data custodian acknowledged
 by the agency acronym in the legend.



WA Crown Copyright 2002