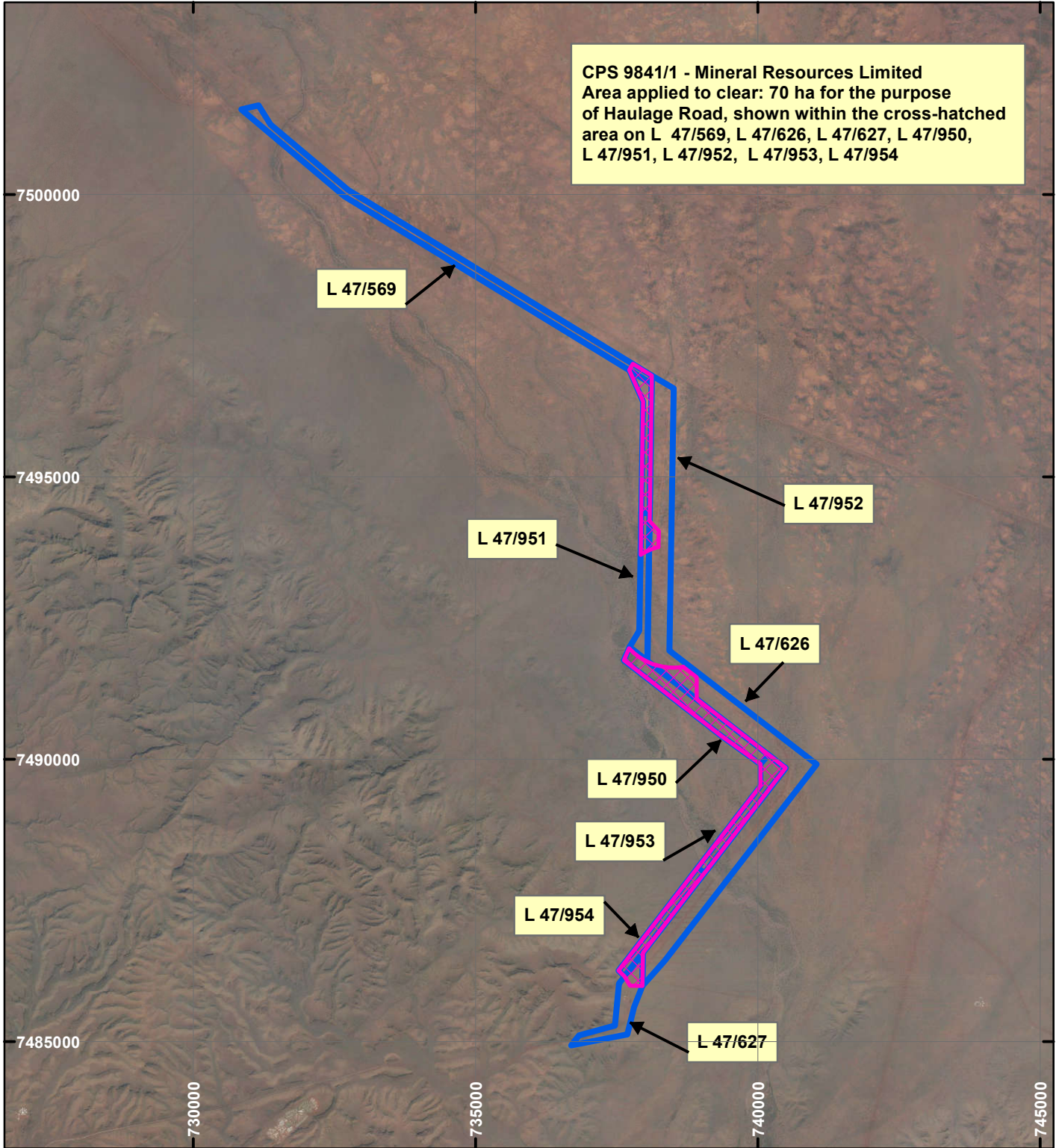
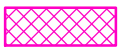


# CPS 9841/1 - Mineral Resources Limited

CPS 9841/1 - Mineral Resources Limited  
 Area applied to clear: 70 ha for the purpose  
 of Haulage Road, shown within the cross-hatched  
 area on L 47/569, L 47/626, L 47/627, L 47/950,  
 L 47/951, L 47/952, L 47/953, L 47/954



## LEGEND

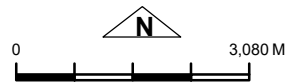


Clearing Instruments



Mining Tenements

Orthophotography sourced from Landgate



Scale 1:100,000

(Approximate when reproduced at A4)

Geocentric Datum Australia 1994

Note: the data in this map have not been projected. This may result in geometric distortion or measurement inaccuracies.

..... Date .....

Officer with delegated authority under Section 20 of the Environmental Protection Act 1986

Information derived from this map should be confirmed with the data custodian acknowledged by the agency acronym in the legend.



WA Crown Copyright 2002