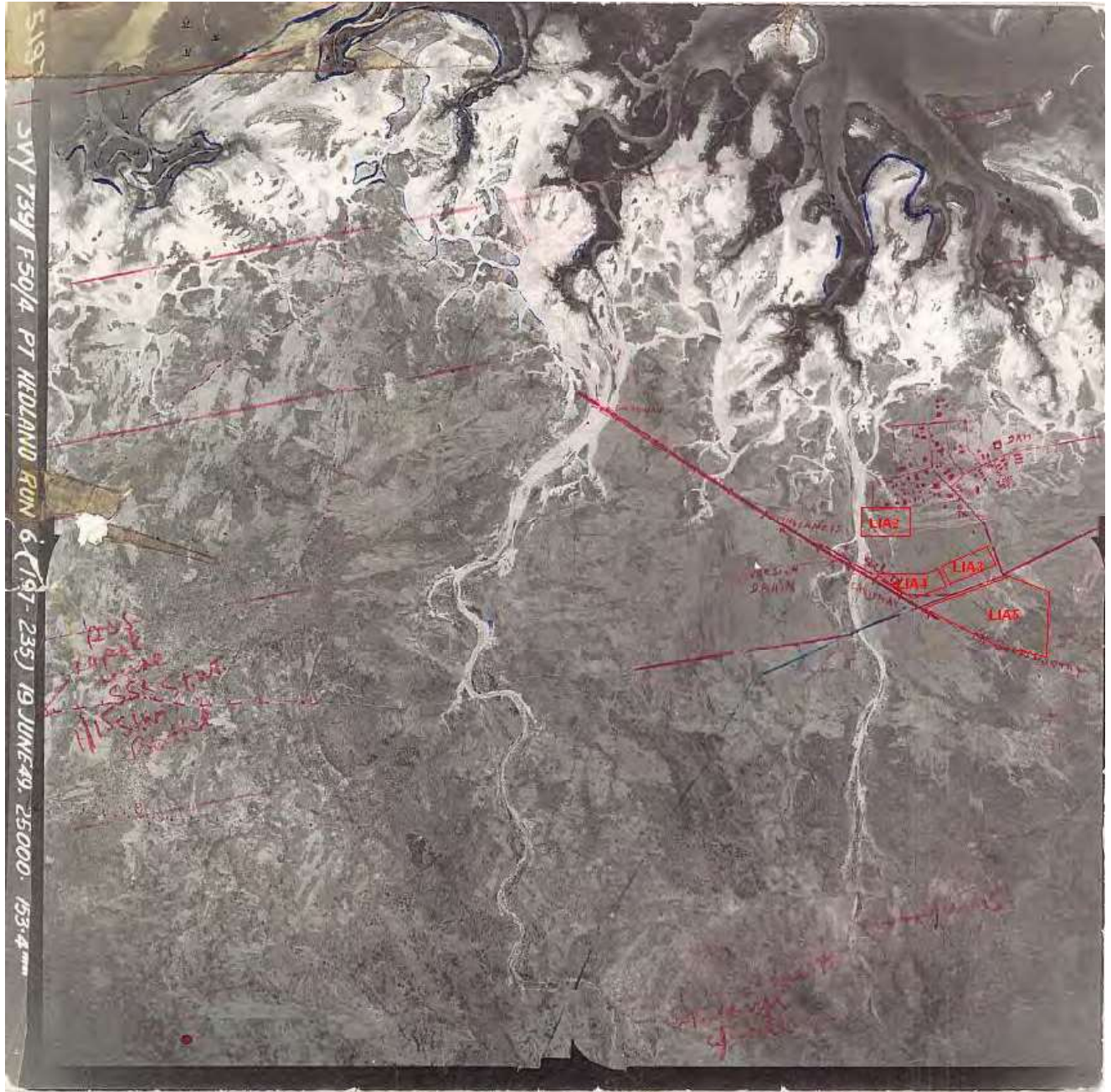







Appendix D
Contaminated Sites Desktop Review

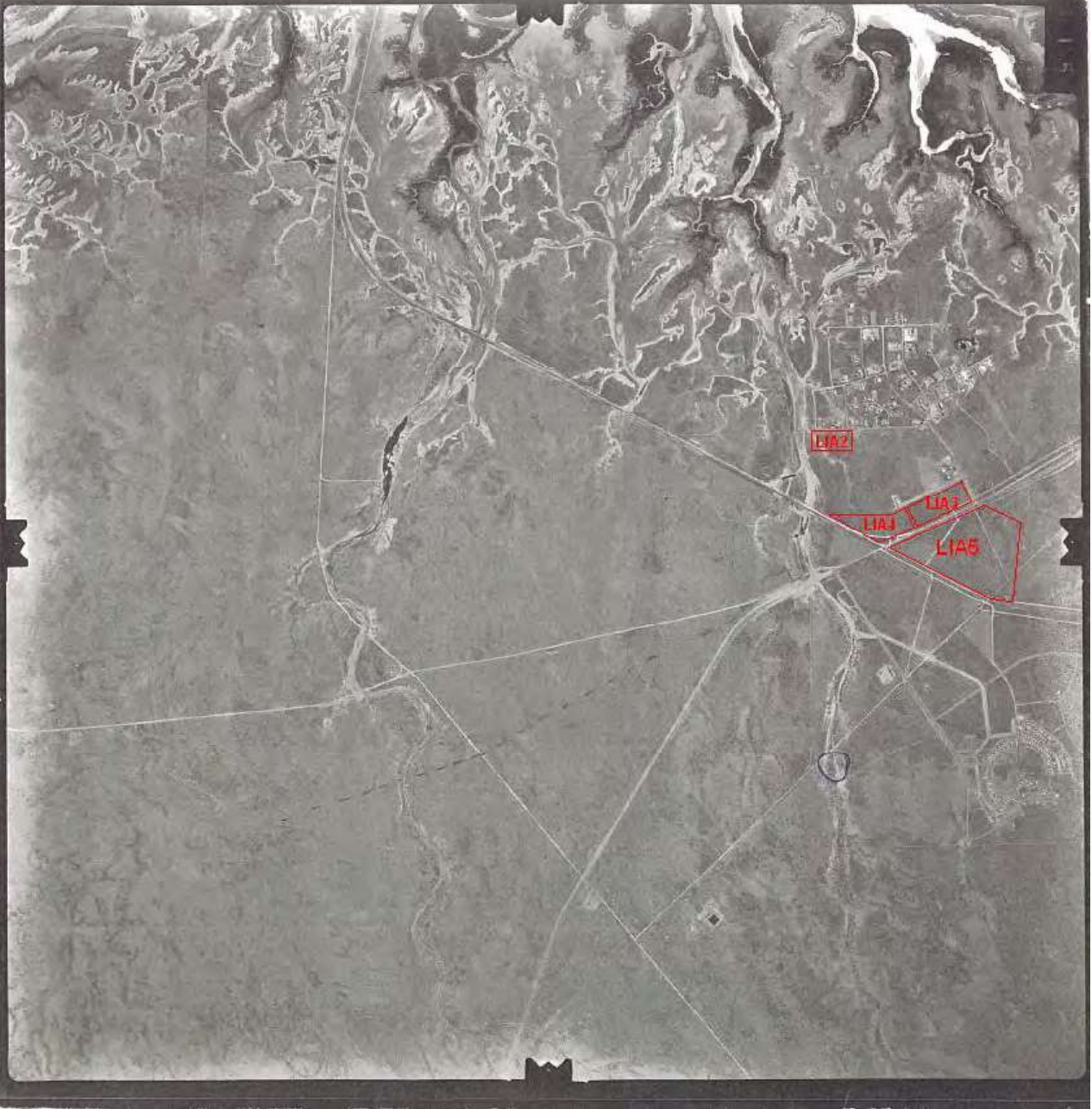
Aerial Photographs
Certificate of Title






<p>Legend</p>  <p>Approximate Site Boundary</p> 	Created By GB	Checked XX	Approved XX	<p>Light Industrial Areas Preliminary Site Investigation Aerial Photo 19 June 1949</p>	
	Date 01/10/08	File location 61/22635/Contaminated site/aerials.pdf			
	Revision 0	Source Landgate		1949	



5089

WA 1358 PORT HEADLAND 1:250,000 SHEET RUN 8 (5047-5092) 20000' 152.55" 13.9.71 PROJ. M.21

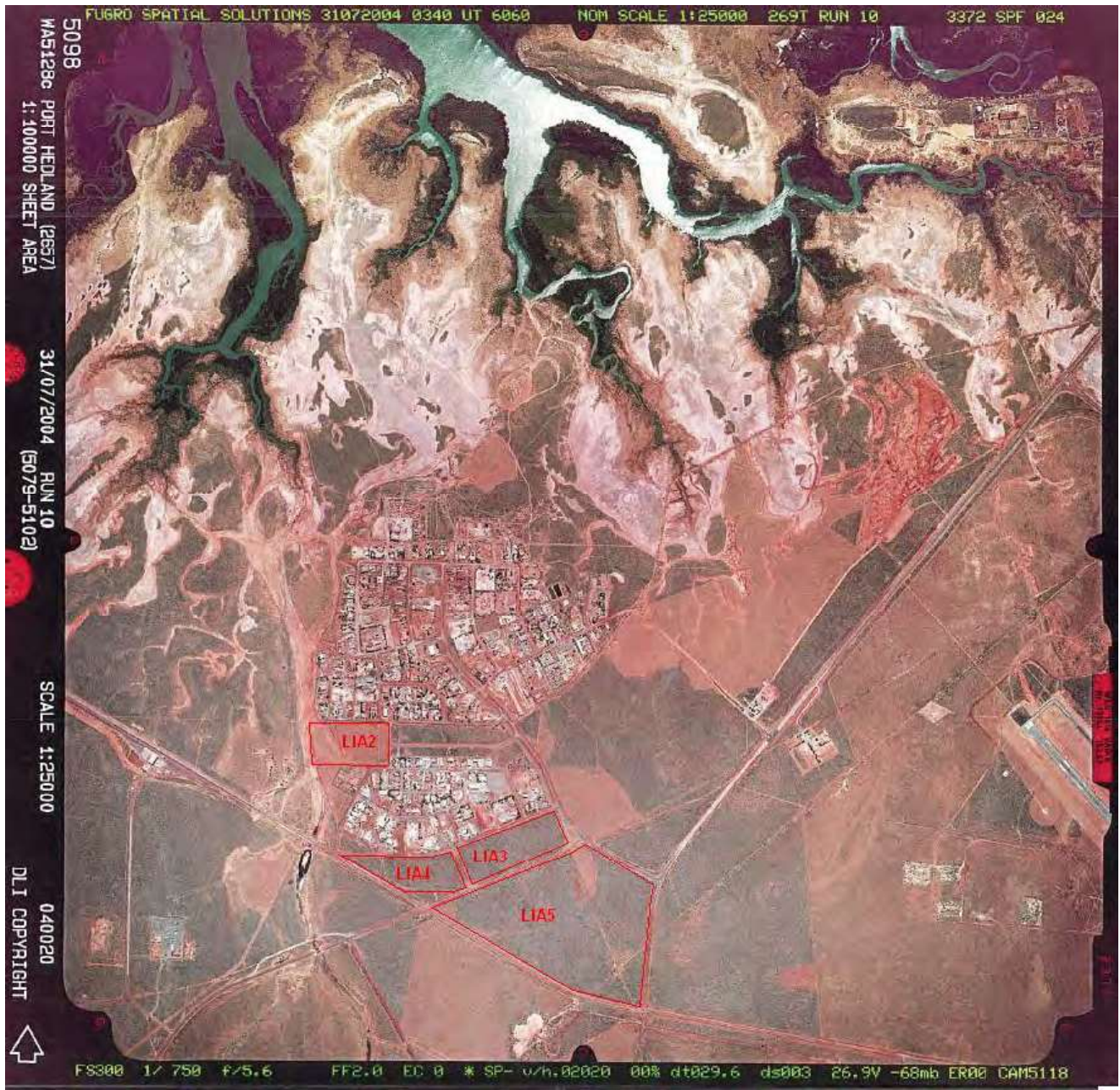




<p>Legend</p>  <p>Approximate Site Boundary</p> 	Created By GB	Checked XX	Approved XX	<p>Wedgfield Light Industrial Areas Preliminary Site Investigation Aerial Photo 13/09/1971</p>	
	Date 01/10/08	File location 61/22635/contaminated sites/aerials.pdf			
	Revision 0	Source Landgate		1971	



<p>Legend</p>  Approximate Site Boundary	Created By GB	Checked XX	Approved XX	Wedgefield Light Industrial Area Preliminary Site Investigation Aerial Photo 04/08/1993	
	Date 01/10/08	File location 61/22635/Contaminated Sites/aerials.pdf			
	Revision 0	Source Landgate		1993	





<p>Legend</p>  <p>Approximate Site Boundary</p> 	<p>Created By GB</p>	<p>Checked XX</p>	<p>Approved XX</p>	<p>Wedgefield Light Industrial Area Preliminary Site Investigation Aerial Photo 31/07/2004</p>	
	<p>Date 01/10/08</p>	<p>File location 61/226351/contaminated sites/aerials.pdf</p>			
	<p>Revision 0</p>	<p>Source Landgate</p>		<p>2004</p>	