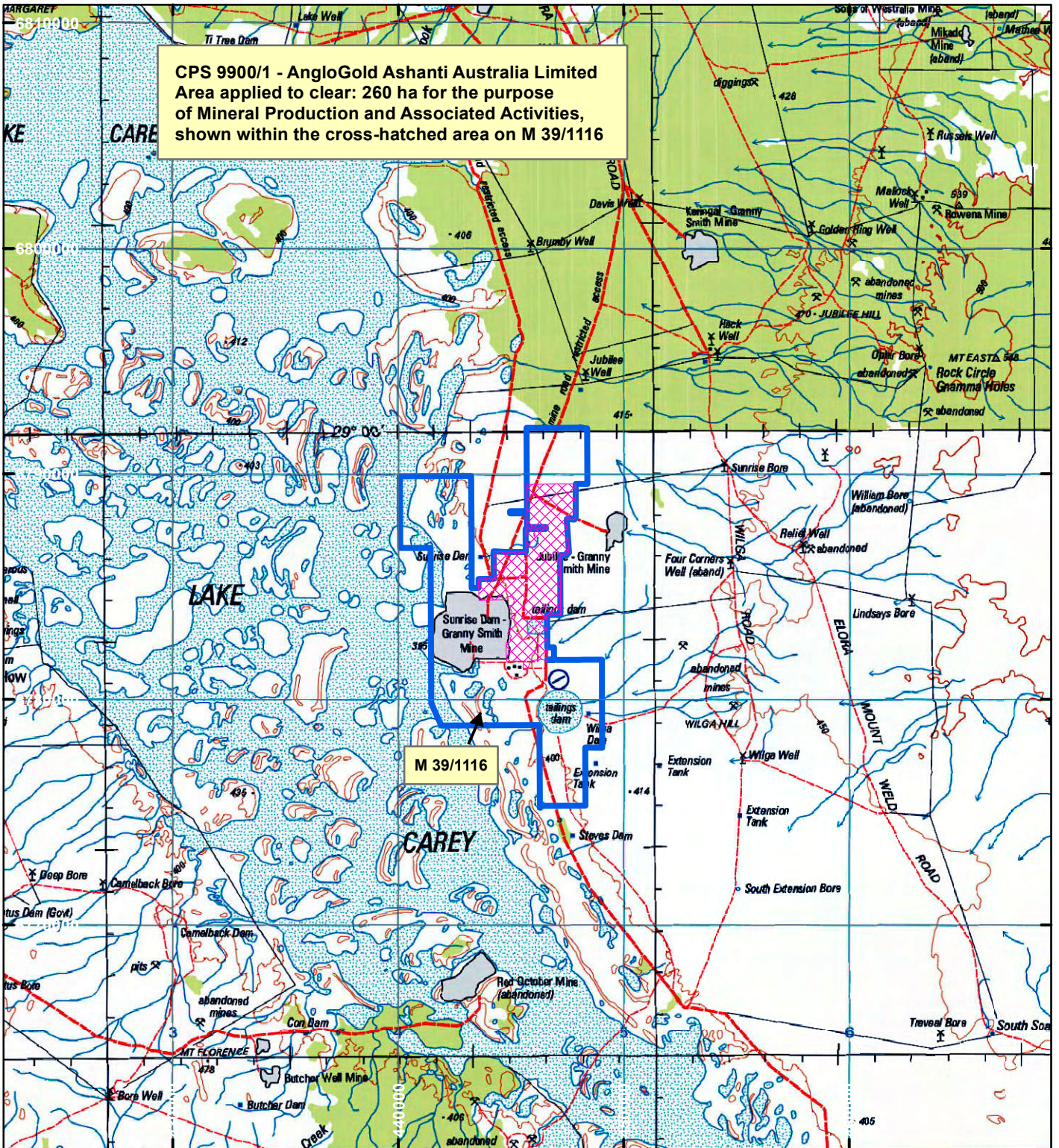


# CPS 9900/1 - AngloGold Ashanti Australia Limited

CPS 9900/1 - AngloGold Ashanti Australia Limited  
 Area applied to clear: 260 ha for the purpose  
 of Mineral Production and Associated Activities,  
 shown within the cross-hatched area on M 39/1116



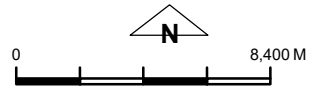
## LEGEND



Clearing Instruments



Mining Tenements



Scale 1:250,000

(Approximate when reproduced at A4)

Geocentric Datum Australia 1994

Note: the data in this map have not been projected. This may result in geometric distortion or measurement inaccuracies.

..... Date .....

Officer with delegated authority under Section 20 of the Environmental Protection Act 1986

Information derived from this map should be confirmed with the data custodian acknowledged by the agency acronym in the legend.



WA Crown Copyright 2002