

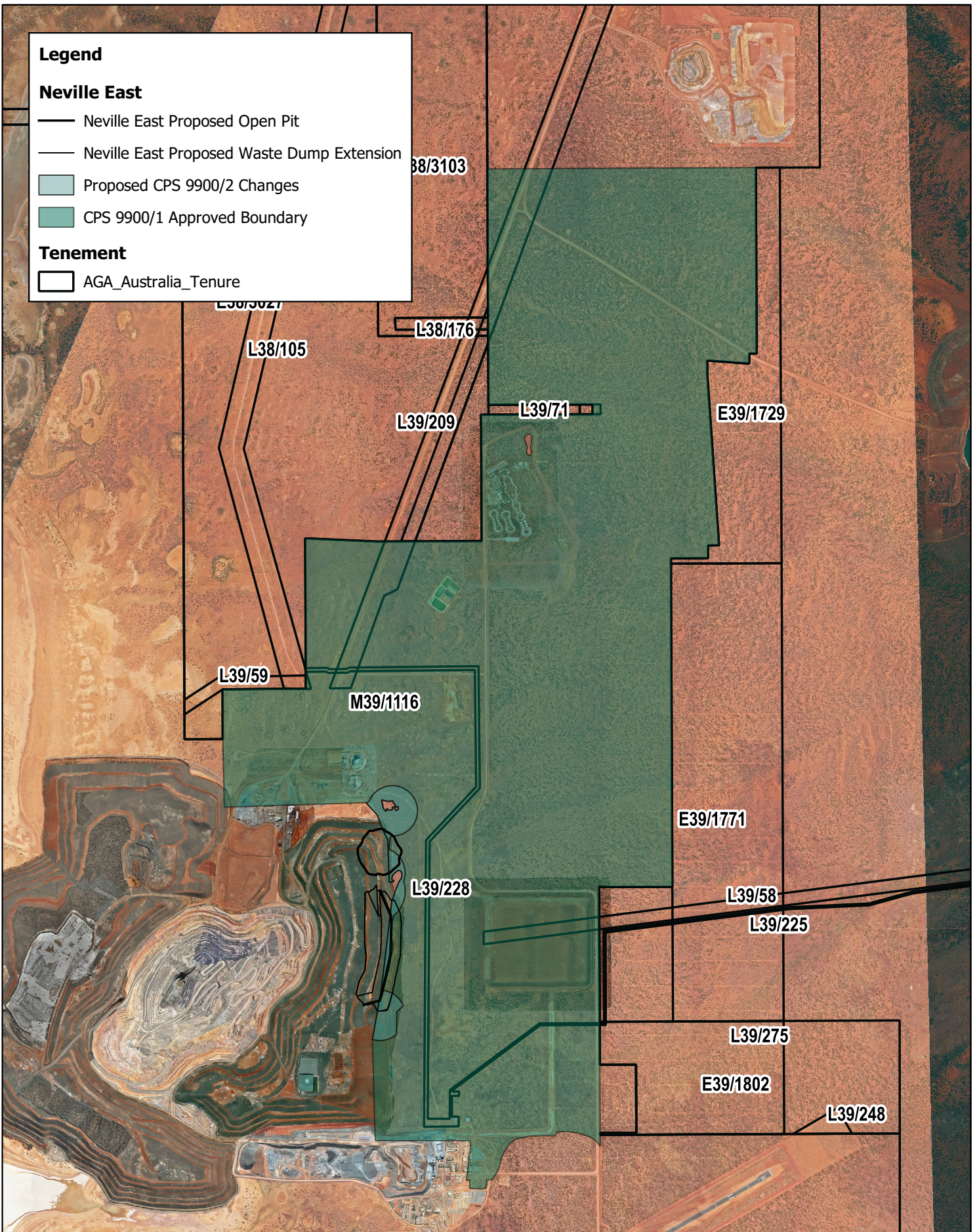
**Legend**

**Neville East**

- Neville East Proposed Open Pit
- Neville East Proposed Waste Dump Extension
- Proposed CPS 9900/2 Changes
- CPS 9900/1 Approved Boundary

**Tenement**

- AGA\_Australia\_Tenure



0 3 6 km



**SUNRISE DAM GOLD MINE**

Native Vegetation Clearing Permit  
9900/2 Application

Scale: 1:40000  
CRS: MGA Z51  
Drawn: NB  
Date: 04.10.23

