

CPS 9926/1 - Context map

116°45'36"E

116°48'0"E

116°50'24"E

20°40'48"S

20°43'12"S

20°45'36"S

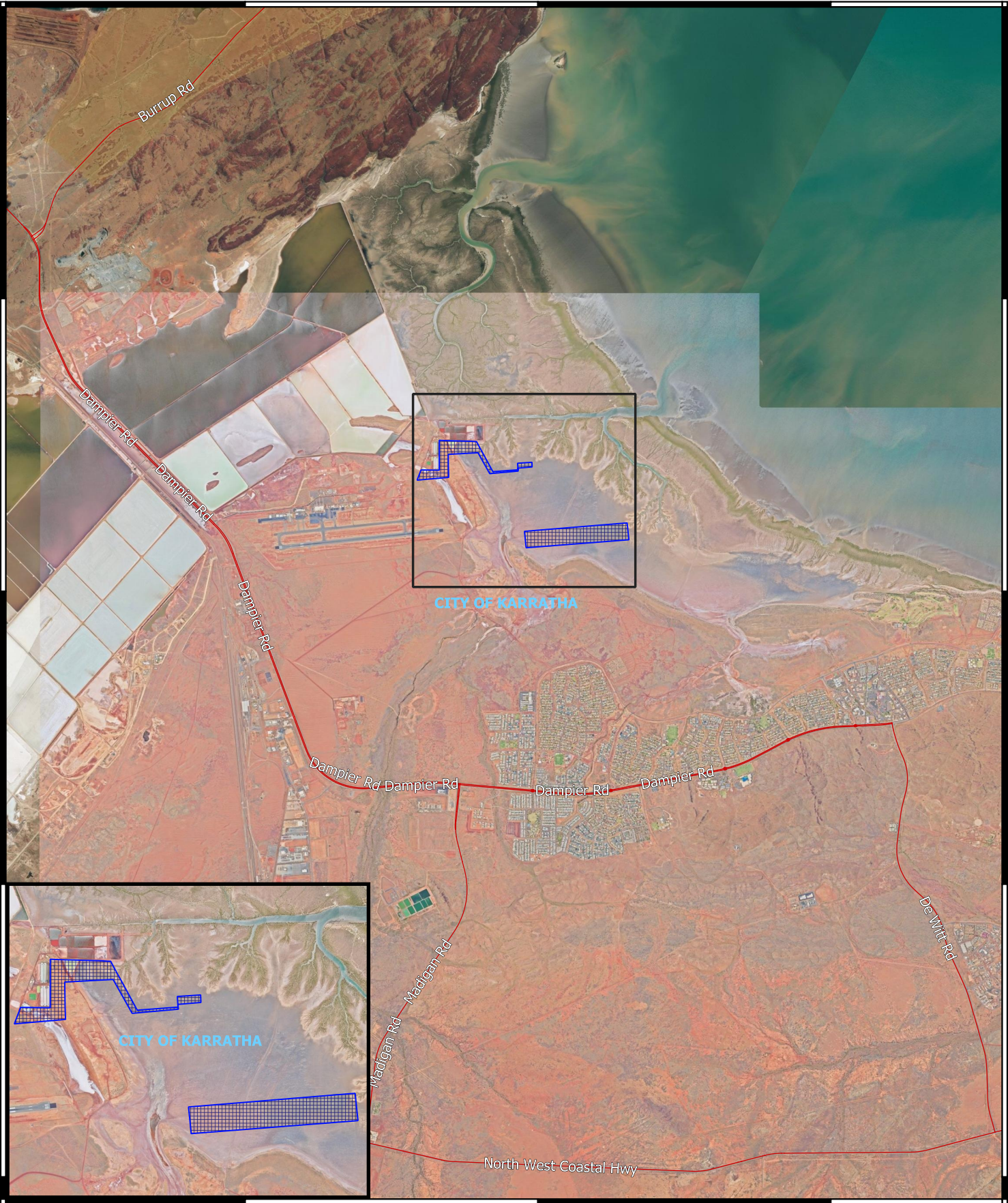
20°48'0"S

20°40'48"S



20°43'12"S

20°45'36"S

20°48'0"S



Legend

-  CPS areas applied to clear
-  Local Government Authorities

0 2,000 4,000 6,000 m

1:60,000

Projection: GDA 94



**GOVERNMENT OF
WESTERN AUSTRALIA**