

CPS 9960/4 - Map b

115°36'58"E

115°37'5"E

115°37'12"E

31°31'12"S

31°31'12"S

31°31'19"S

31°31'19"S

31°31'26"S

31°31'26"S

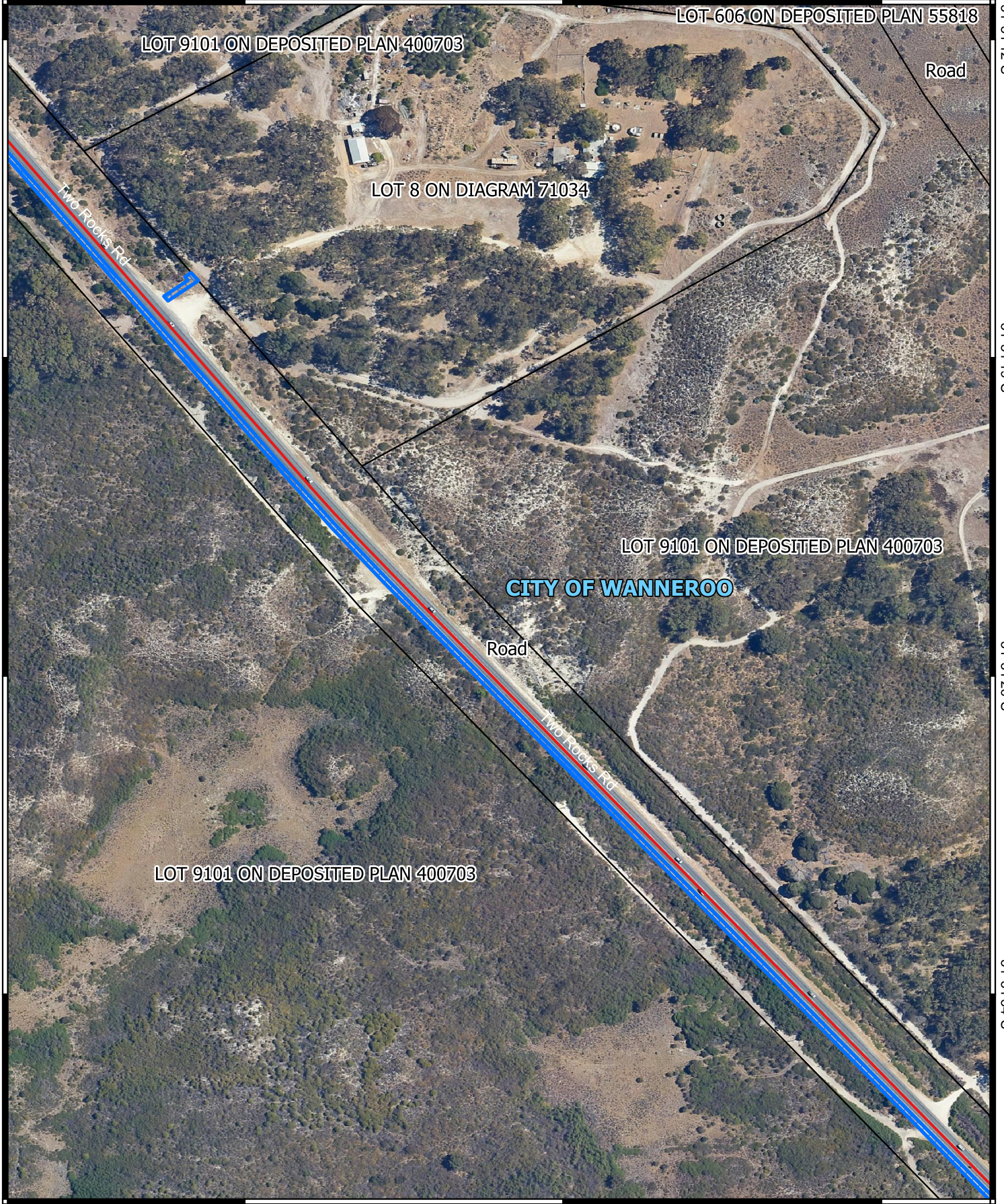
31°31'34"S

31°31'34"S




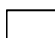
115°36'58"E

115°37'5"E

115°37'12"E



Legend

-  CPS areas applied to clear
-  Local Government Authorities
-  Roads
-  Land Tenure



1:2,300

Projection: GDA2020



GOVERNMENT OF
WESTERN AUSTRALIA