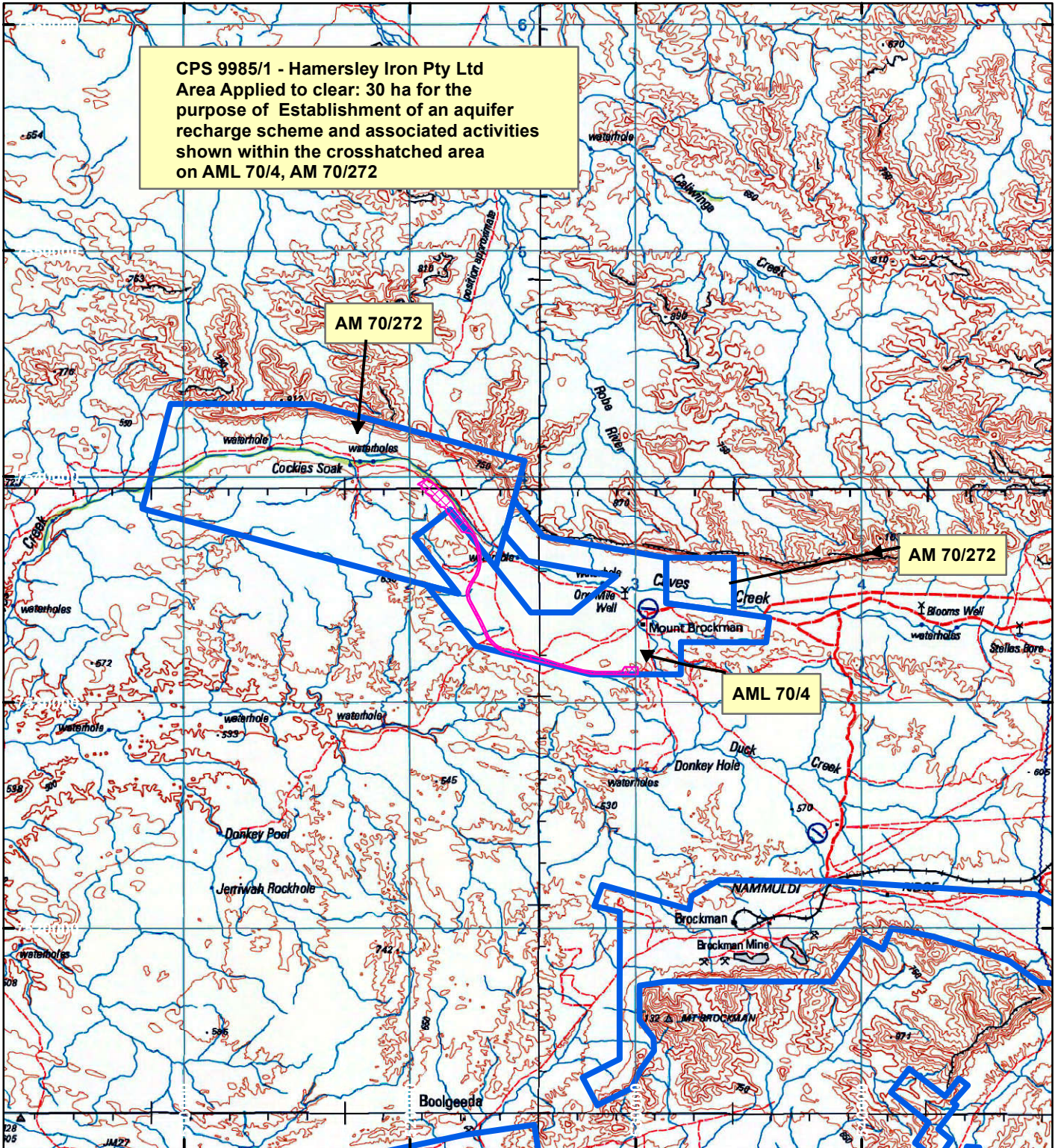


CPS 9985/1 - Hamersley Iron Pty Ltd

CPS 9985/1 - Hamersley Iron Pty Ltd
 Area Applied to clear: 30 ha for the
 purpose of Establishment of an aquifer
 recharge scheme and associated activities
 shown within the crosshatched area
 on AML 70/4, AM 70/272



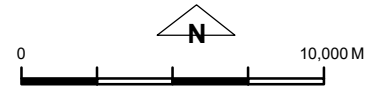
LEGEND



Clearing Instruments



Mining Tenements



Scale 1:250,000

(Approximate when reproduced at A4)

Geocentric Datum Australia 1994

Note: the data in this map have not been projected. This may result in geometric distortion or measurement inaccuracies.

..... Date

Officer with delegated authority under Section 20 of
 the Environmental Protection Act 1986

Information derived from this map should be
 confirmed with the data custodian acknowledged
 by the agency acronym in the legend.



WA Crown Copyright 2002