

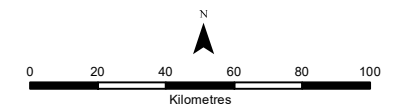
Silvergrass East MAR (Managed Aquifer Recharge) Project Location

Drawn: J.Anderson
Plan: RTIO-0208064v1
Date: August 2022

Proj: GDA 1994 MGA Zone 50
Scale: 1:2,225,000 @ A4
gisteam@riotinto.com

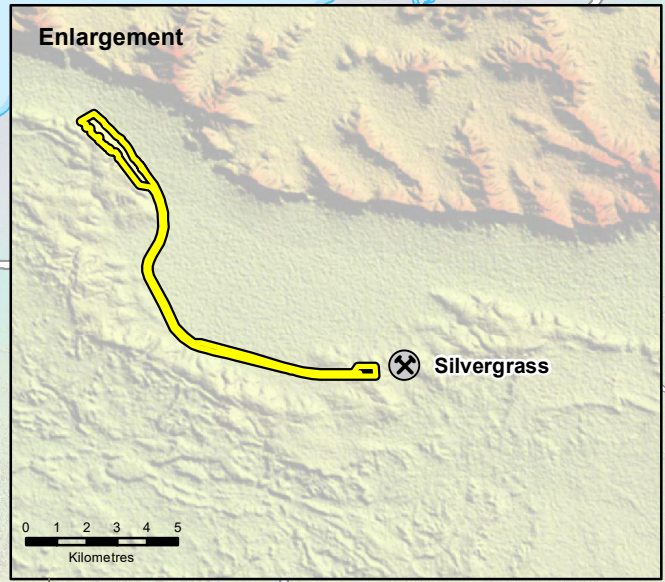
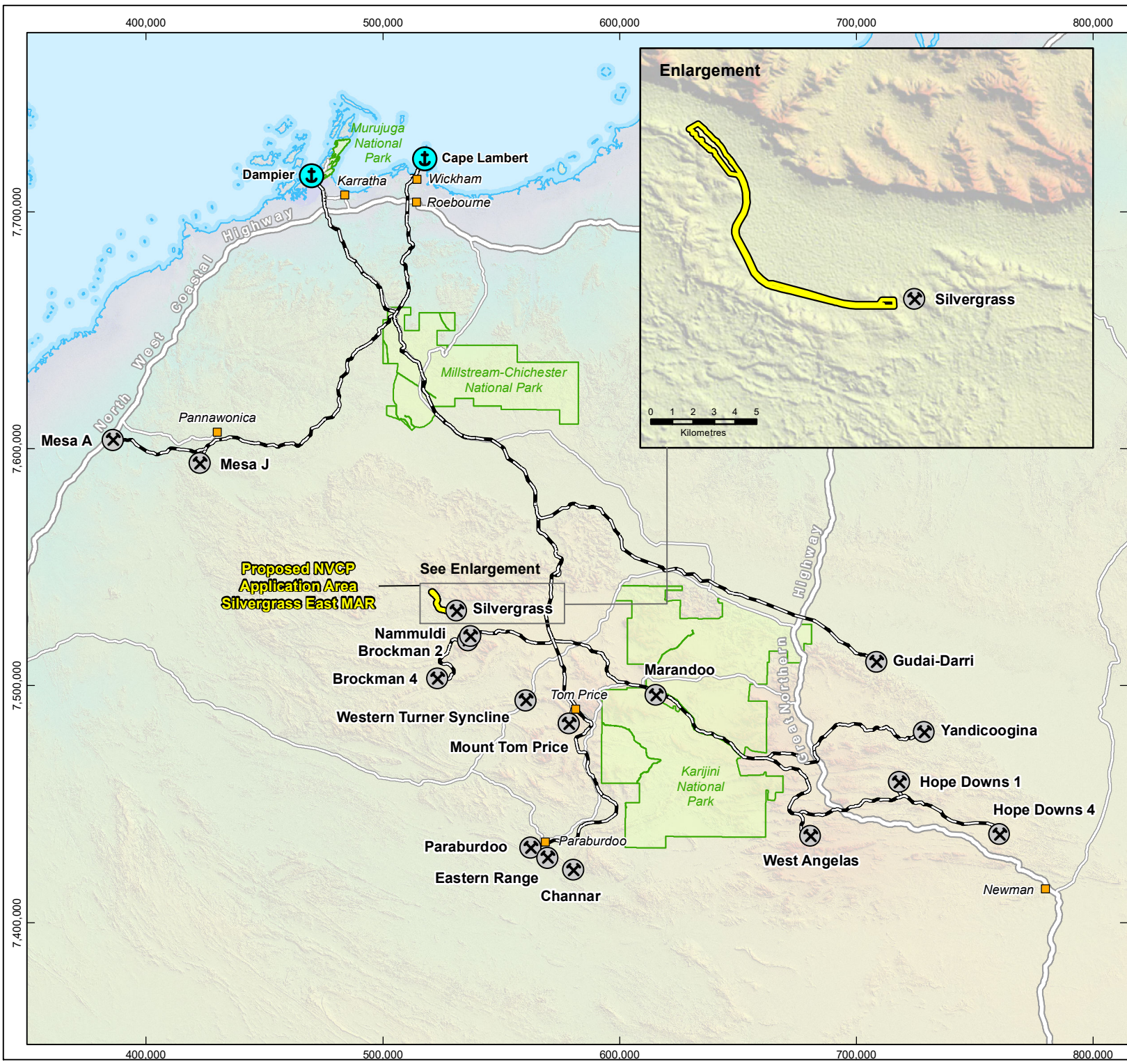
Legend

- Rio Tinto Mine
- Port
- Town
- Proposed NVCP Application Area
- National Park
- Rio Tinto Railway
- Highway
- Major Road



Map units in metres

Disclaimer: This document has been prepared to the highest level of accuracy possible, for the purposes of Rio Tinto's iron ore business. Reproduction of this document in whole or in part by any means is strictly prohibited without the express approval of Rio Tinto. Further, this document may not be referred to, quoted or relied upon for any purpose whatsoever without the written approval of Rio Tinto. Rio Tinto will not be liable to a third party for any loss, damage, liability or claim arising out of or incidental to a third party using or relying on the content contained in this document. Rio Tinto disclaims all risk and the third party assumes all risk and releases and indemnifies and agrees to keep indemnified Rio Tinto from any loss, damage, claim or liability arising directly or indirectly from the use or reliance on this document.





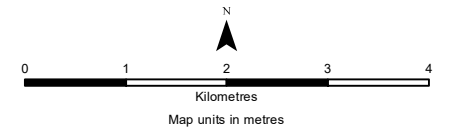
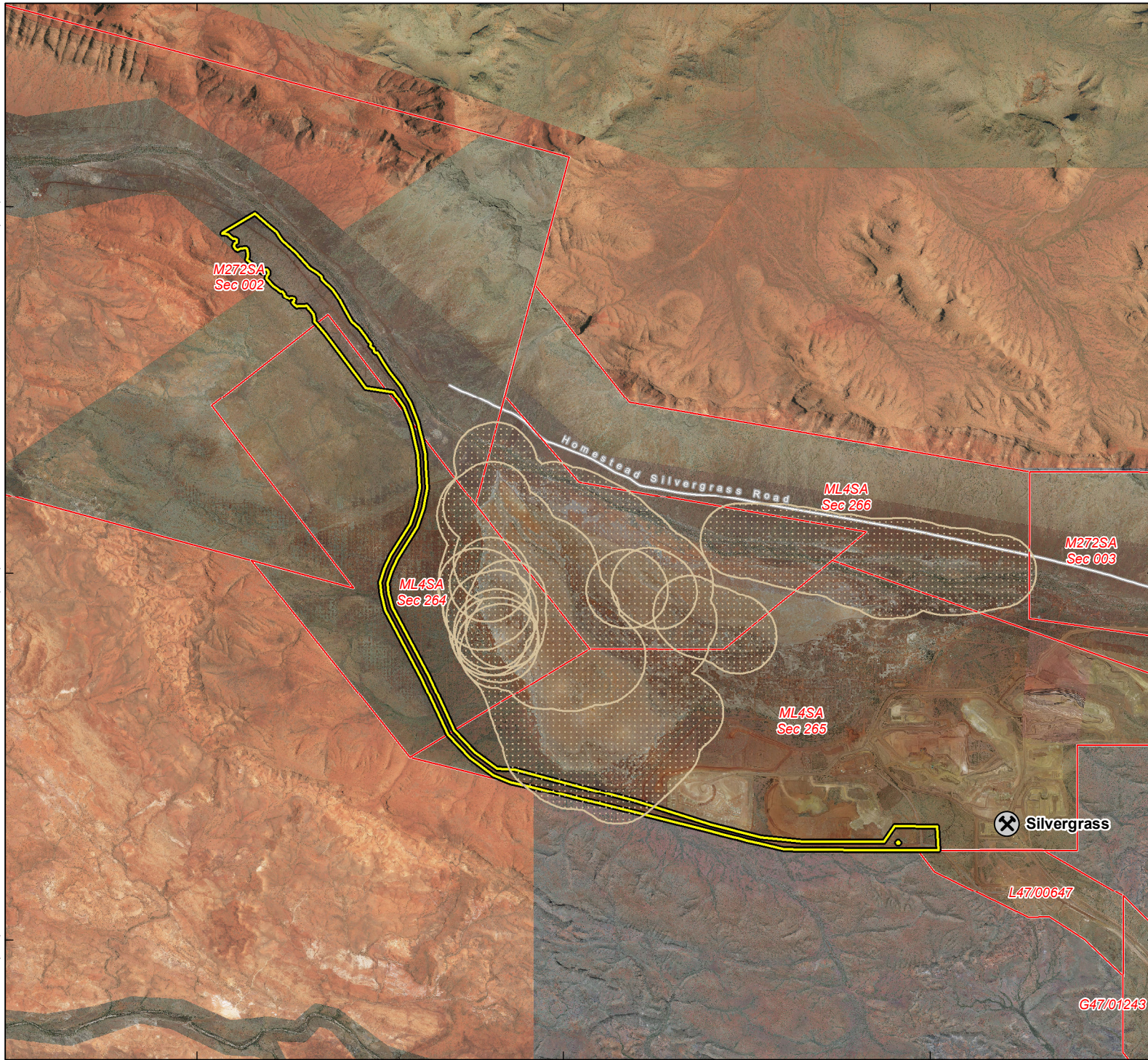
Silvergrass East MAR (Managed Aquifer Recharge) Assessment Area

Drawn: J.Anderson
Plan: RTIO-0208064v1
Date: August 2022

Proj: GDA 1994 MGA Zone 50
Scale: 1:75,000 @ A4
gisteam@riotinto.com

Legend

-  Rio Tinto Mine
-  Proposed NVCP Application Area
-  TEC and PEC Buffers
-  Rio Tinto Live Mining Act Tenure
-  Minor Road










Disclaimer: This document has been prepared to the highest level of accuracy possible, for the purposes of Rio Tinto's iron ore business. Reproduction of this document in whole or in part by any means is strictly prohibited without the express approval of Rio Tinto. Further, this document may not be referred to, quoted or relied upon for any purpose whatsoever without the written approval of Rio Tinto. Rio Tinto will not be liable to a third party for any loss, damage, liability or claim arising out of or incidental to a third party using or relying on the content contained in this document. Rio Tinto disclaims all risk and the third party assumes all risk and releases and indemnifies and agrees to keep indemnified Rio Tinto from any loss, damage, claim or liability arising directly or indirectly from the use or reliance on this document.

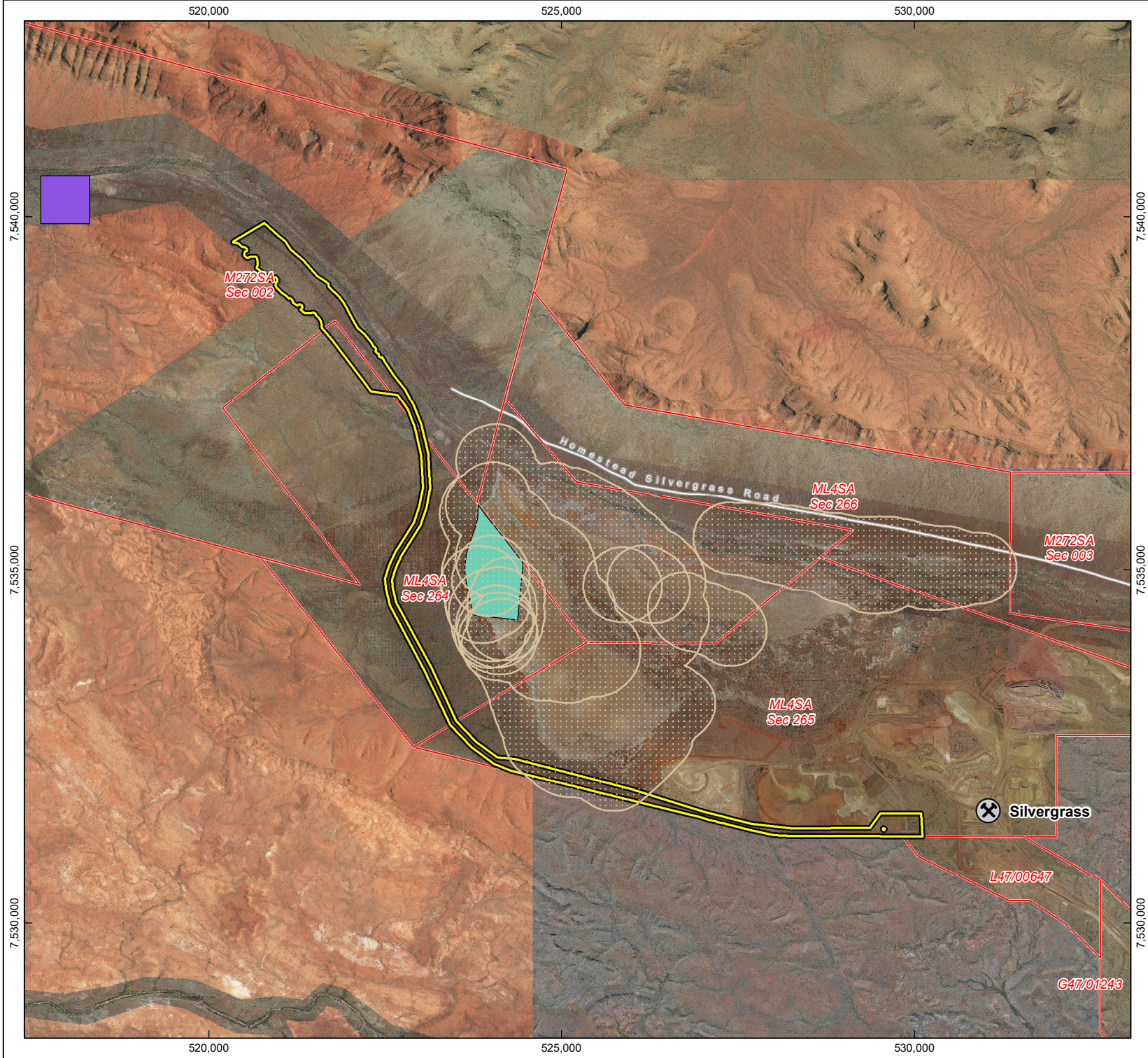
Silvergrass East MAR (Managed Aquifer Recharge) Live Native Vegetation Clearing Permits within the Application Area

Drawn: J.Anderson
Plan: RTIO-0208064v1
Date: August 2022

Proj: GDA 1994 MGA Zone 50
Scale: 1:75,000 @ A4
gisteam@riotinto.com

Legend

-  Rio Tinto Mine
-  Proposed NVCP Application Area
-  TEC and PEC Buffers
-  Rio Tinto Live Mining Act Tenure
-  Minor Road
- NVCPs**
 -  3506/3
 -  6110/6



Disclaimer: This document has been prepared to the highest level of accuracy possible, for the purposes of Rio Tinto's iron ore business. Reproduction of this document in whole or in part by any means is strictly prohibited without the express approval of Rio Tinto. Further, this document may not be referred to, quoted or relied upon for any purpose whatsoever without the written approval of Rio Tinto. Rio Tinto will not be liable to a third party for any loss, damage, liability or claim arising out of or incidental to a third party using or relying on the content contained in this document. Rio Tinto disclaims all risk and the third party assumes all risk and releases and indemnifies and agrees to keep indemnified Rio Tinto from any loss, damage, claim or liability arising directly or indirectly from the use or reliance on this document.