

PROTECTED

Horizon Power Halls Creek Water Corporation Water Supply Construction Environmental Management Plan

November 2023



HORIZON
POWER

Contents

| | | |
|-----|-------------------------------------|----|
| 1 | Introduction | 3 |
| 1.1 | Project Context and Scope | 3 |
| 1.2 | Scope and purpose | 3 |
| 2 | Description of the Activity | 4 |
| 2.1 | Activity Overview | 4 |
| 2.2 | Clearing of Native Vegetation | 4 |
| 3 | Management Measures | 11 |

1 Introduction

1.1 Project Context and Scope

Horizon Power is a Western Australian (WA) Government Trading Enterprise (GTE) and the state's regional and remote energy utility. Horizon Power operates under the Electricity Corporations Act 2005 and is governed by a Board of Directors accountable to the Minister for Energy. Horizon Power is an experienced asset manager undertaking active management of vast electricity networks across WA, utilising mature and robust operational, health and safety, and environmental systems.

The project will consist of the construction and installation of 19 new poles with associated infrastructure expanding to the new bore locations for the purposes of increasing the supply of the existing Water Corporation water supply at Halls Creek, WA. Construction and installation of the new assets will involve minor clearing of vegetation to provide safe access and installation at the new pole and associated infrastructure locations. The total clearing footprint will not exceed 0.128 ha.

1.2 Scope and purpose

This Construction Environmental Management Plan (CEMP) has been developed to outline environmental management measures to be implemented by Horizon Power and its contractors during the construction of the Halls Creek Water Corporation Water Supply Project. This includes, but is not limited to, measures to manage dust, erosion and spread of weeds during clearing of native vegetation. The CEMP will be familiarised with Horizon Power, Water Corporation and the contractors prior to undertaking the scope of works to ensure the environmental advice will be complied with. The site supervisor will conduct toolbox and pre-start meetings at the start of each day which will further enforce the requirements of the CEMP to those involved with the works.

2 Description of the Activity

2.1 Activity Overview

Horizon Power has identified the proposed clearing locations which will extend from the existing network and access track to the new pole locations. Shire of Halls Creek is the registered Management Order holder of the land and the certificate of titles are included in the Supporting Documentation.

The proposed project will involve the mechanical clearing of the vegetation on the Lots to facilitate the safe construction and installation of poles and associated infrastructure to the bores for the purpose of increasing the Water Corporation water supply in Halls Creek, WA. The total clearing footprint will not exceed 0.128 ha.

2.2 Clearing of Native Vegetation

The proposed clearing will occur within the Project area (Figures 1 - 6) which is in total 0.128 ha in size. No more than 0.128 ha of clearing is proposed, to allow for the safe access of the construction and installation of the new poles and associated infrastructure.

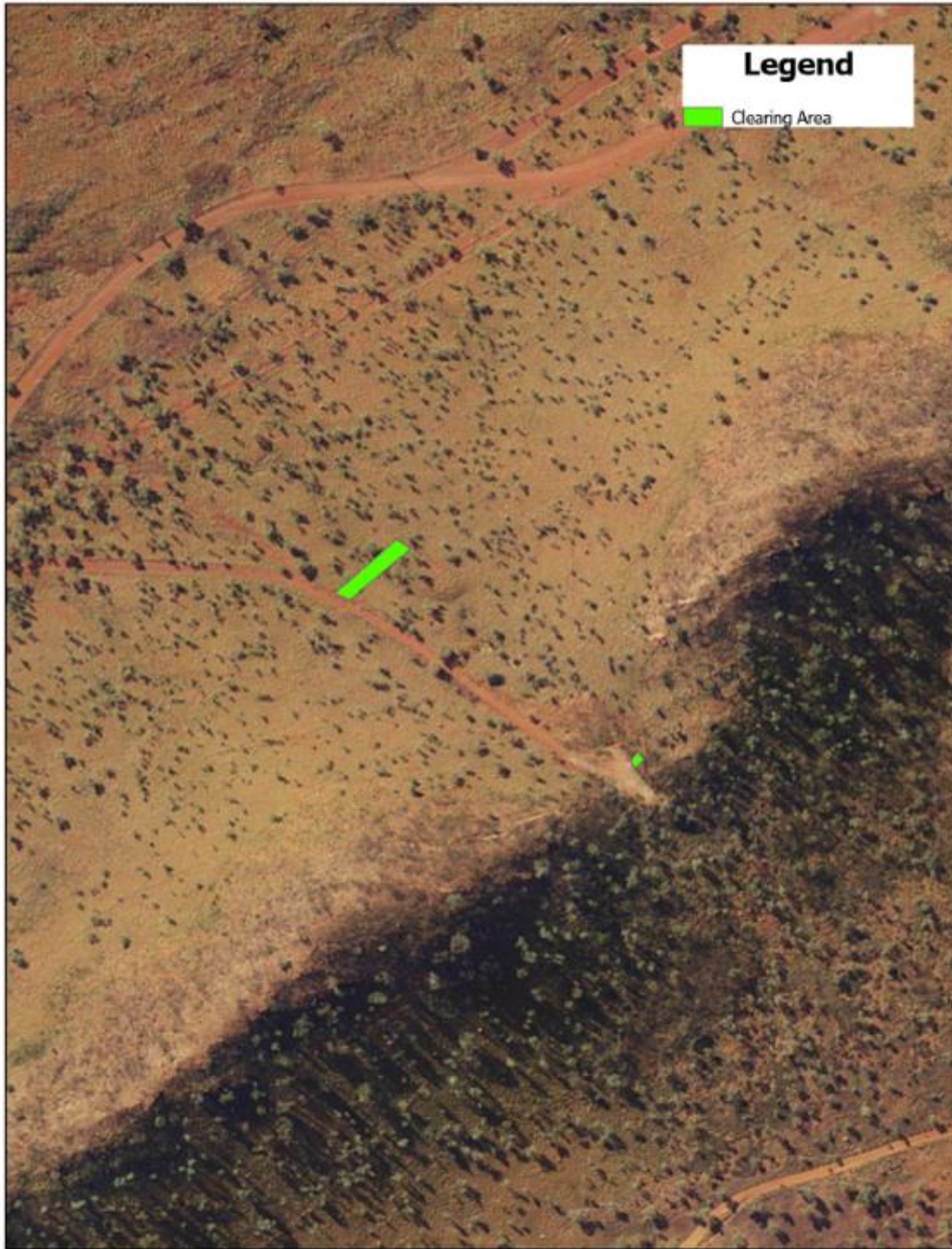
PROTECTED

Figure 1. Proposed clearing locations.



| | | | |
|--|---|--|---|
| Map  | Figure 1  Scale: 1:2,000 | Reference only Confirm Current Network State in EO Web Last updated on 30/10/2023 by H180292 |  |
|--|---|--|---|

Figure 2. Proposed clearing locations.



Map

Figure 2



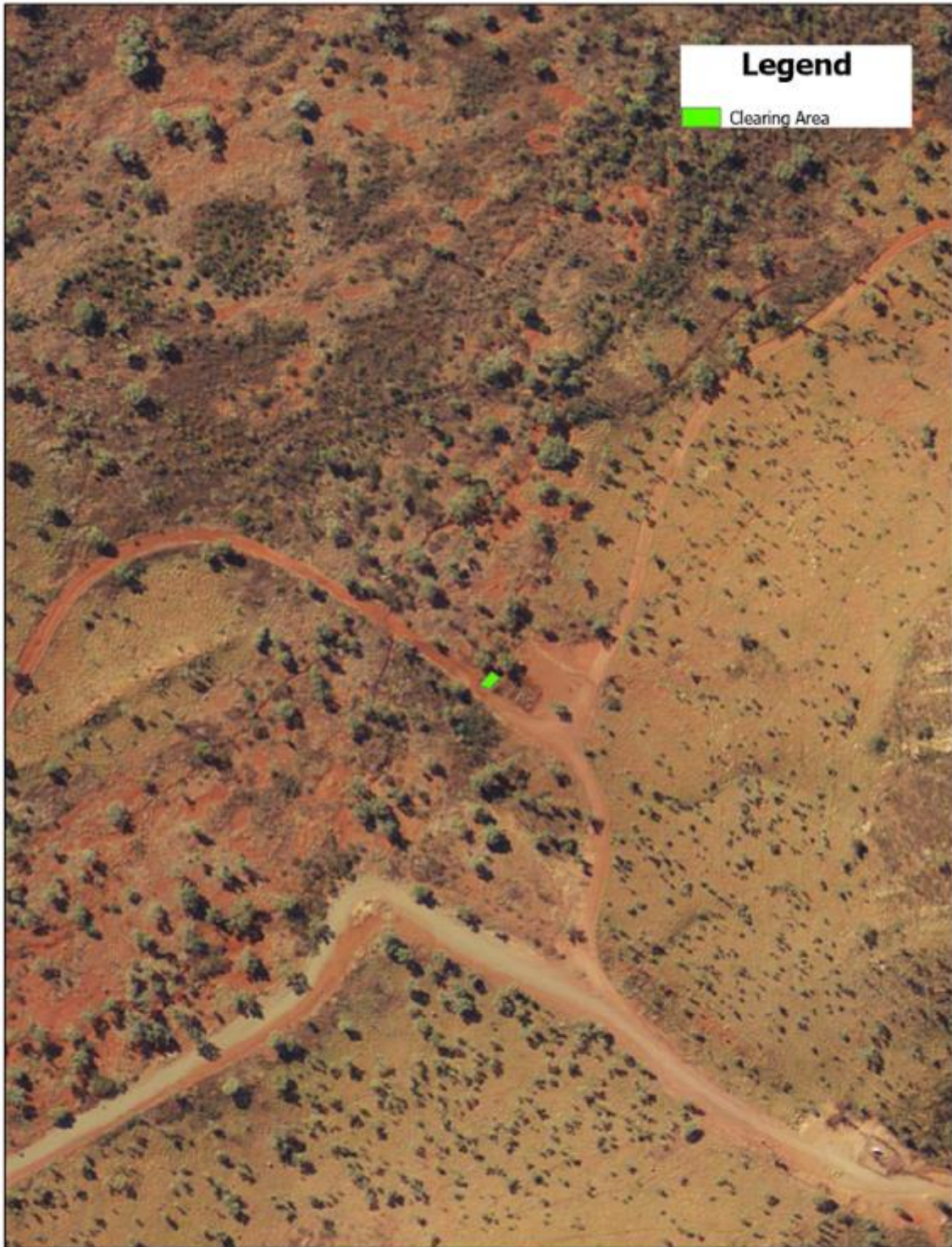
0 25 50 100
Meters
Scale: 1:2,000

 Reference only
Confirm Current Network State in EO Web
Last updated on 30/10/2023 by H180297



PROTECTED

Figure 3. Proposed clearing locations.



| | | |
|---|--|---|
| Map | Figure 3 |  |
|  |  Scale: 1:2,000 <small>Reference only Confirm Current Network State in EO Web Last updated on 30/10/2023 by H180297</small> | |

PROTECTED

Figure 4. Proposed clearing locations.



Map

Figure 4



0 25 50 100 Meters

Scale: 1:2,000

Reference only
Confirm Current Network State in EO Web
Last updated on 30/10/2023 by H180297



PROTECTED

Figure 5. Proposed clearing locations.



| | | |
|-----|--------------------------------------|--|
| Map | Figure 5 | |
| | 0 25 50 100 Meters Scale: 1:2,000 | |

Figure 6. Proposed clearing locations.



Map

Figure 6



0 25 50 100 Meters
Scale: 1:2,000

Reference only
Confirm Current Network State in EO Web
Last updated on 30/10/2023 by H180297



3 Management Measures

The management measures listed in Table 1 will be implemented during construction for this Project.

Table 1 Management Measures to be Implemented During Construction

| Aspect | Management Measure |
|----------------------------|--|
| Extent of Clearing | <ul style="list-style-type: none"> – No more than 0.128 ha of total clearing is permitted at the locations detailed in Figures 1 - 6. – The clearing locations are to be demarcated prior to clearing activities. – A pre-clearing toolbox will be held so all staff are aware of their responsibilities and the limits of clearing. The preclearing toolbox will include the risk of contamination at the site. |
| Flora and vegetation | <ul style="list-style-type: none"> – No more than 0.128 ha of total clearing is permitted at the locations detailed in Figures 1 - 6. |
| Fauna | <ul style="list-style-type: none"> – Clearing of native vegetation will be undertaken in a slow, progressive manner in one direction to allow fauna to move away from the clearing area. – Construction personnel will not touch, feed or otherwise directly interact with fauna. |
| Weeds | <ul style="list-style-type: none"> – The Contractor will ensure that no weed-affected soil, mulch, fill or other material is brought onto the site. – All vehicles and machinery will arrive clean on site. – Movement of vehicles and machinery will be restricted to the area to be cleared and existing cleared areas. |
| Erosion | <ul style="list-style-type: none"> – Standard construction measures regarding erosion and sediment control will be implemented during construction works. |
| Dust | <ul style="list-style-type: none"> – Standard construction dust control and mitigation measures will be implemented during clearing. This may include the use of a water truck, or similar. – Ground disturbance and clearing of vegetation will be restricted during high winds if dust cannot be adequately controlled. |
| Noise | <ul style="list-style-type: none"> – The contractor will comply with the Environmental Protection (Noise) Regulations 1997. – Complaints regarding noise will be recorded and investigated by Horizon Power. |
| Waste | <ul style="list-style-type: none"> – Rubbish will be disposed of in appropriate containers and all waste will be removed from the site. |
| Hydrocarbons and chemicals | <ul style="list-style-type: none"> – Hydrocarbons and chemicals will be appropriately managed on site to prevent spills, including maintaining equipment in good working order in accordance with manufacturers specifications. – No refuelling will be undertaken within 50 m of a waterway, drain or drainage line. – Hydrocarbons will be appropriately stored at least 50 m away from drainage lines and stored in an appropriately bunded container. – Refuelling will be undertaken on hardstand or using catch trays only. Uncontrolled refuelling is not permitted. – Chemicals will be appropriately stored. |
| Contamination | <ul style="list-style-type: none"> – No known contaminated sites are located within 2 kms of the Project area. Unexpected finds protocols will be applied including immediate stop work if contamination is suspected. |
| Heritage | <ul style="list-style-type: none"> – Should previously unknown Aboriginal cultural heritage materials be uncovered during construction works, works are to stop immediately within 20 m of the find. The Contractor is to contact the Horizon Project Manager and an incident will be raised. The area will be cordoned off and no access permitted to the area until the incident is investigated and resolved. |