



Red is rough boundary line, white is area with trees we would like to remove.



View of LOT 26 approaching
from LOT 27 to the North.

Drainage ditch to the South of
the collection of trees.



View to Lot 26 crossover access (where vehicle is parked) from drainage ditch.



Grouping of trees at
the South of the
property



View of trees on North boundary





































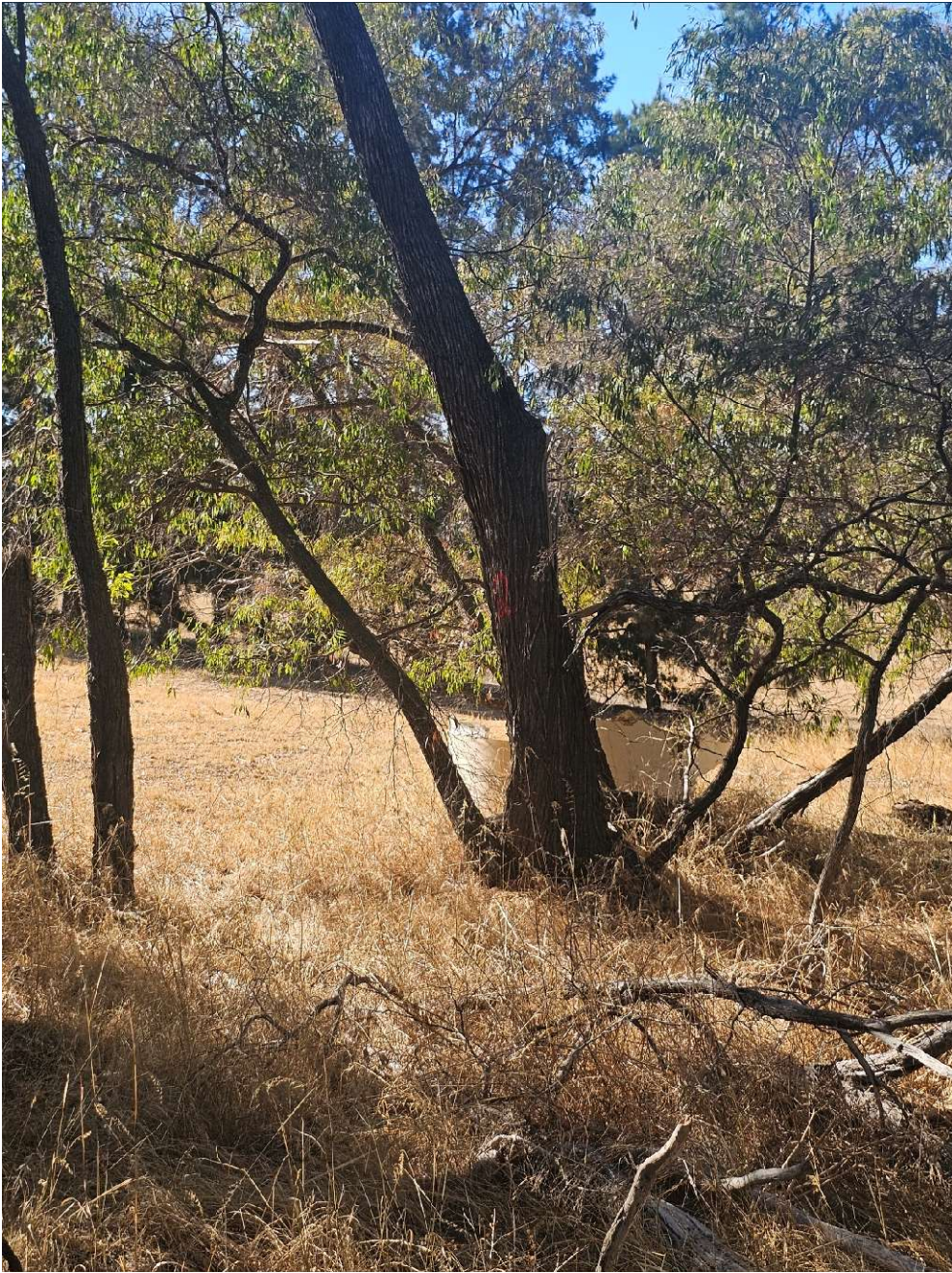




Trees to stay:
dead jarrah
and tuart





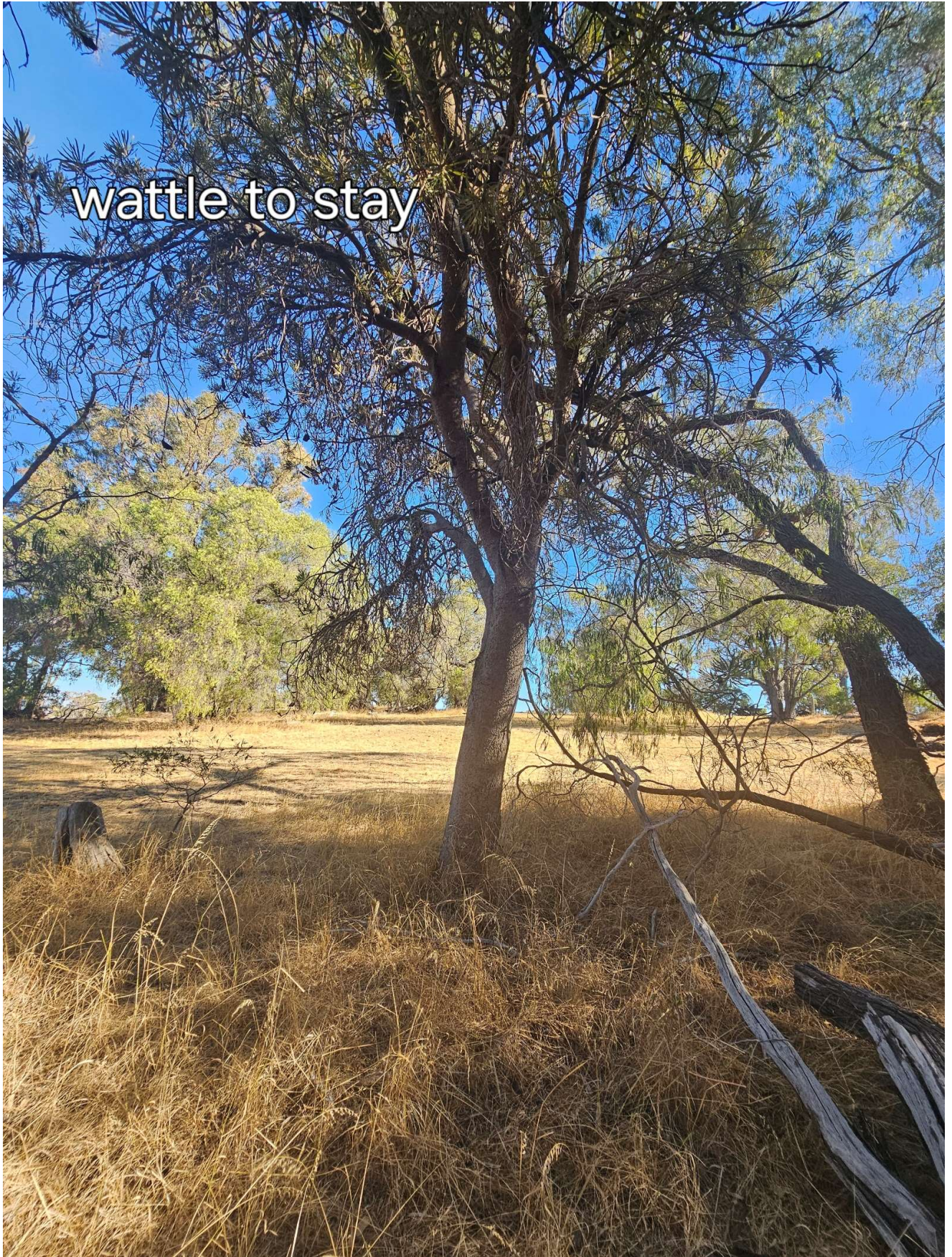








wattle to stay



pinos to stay



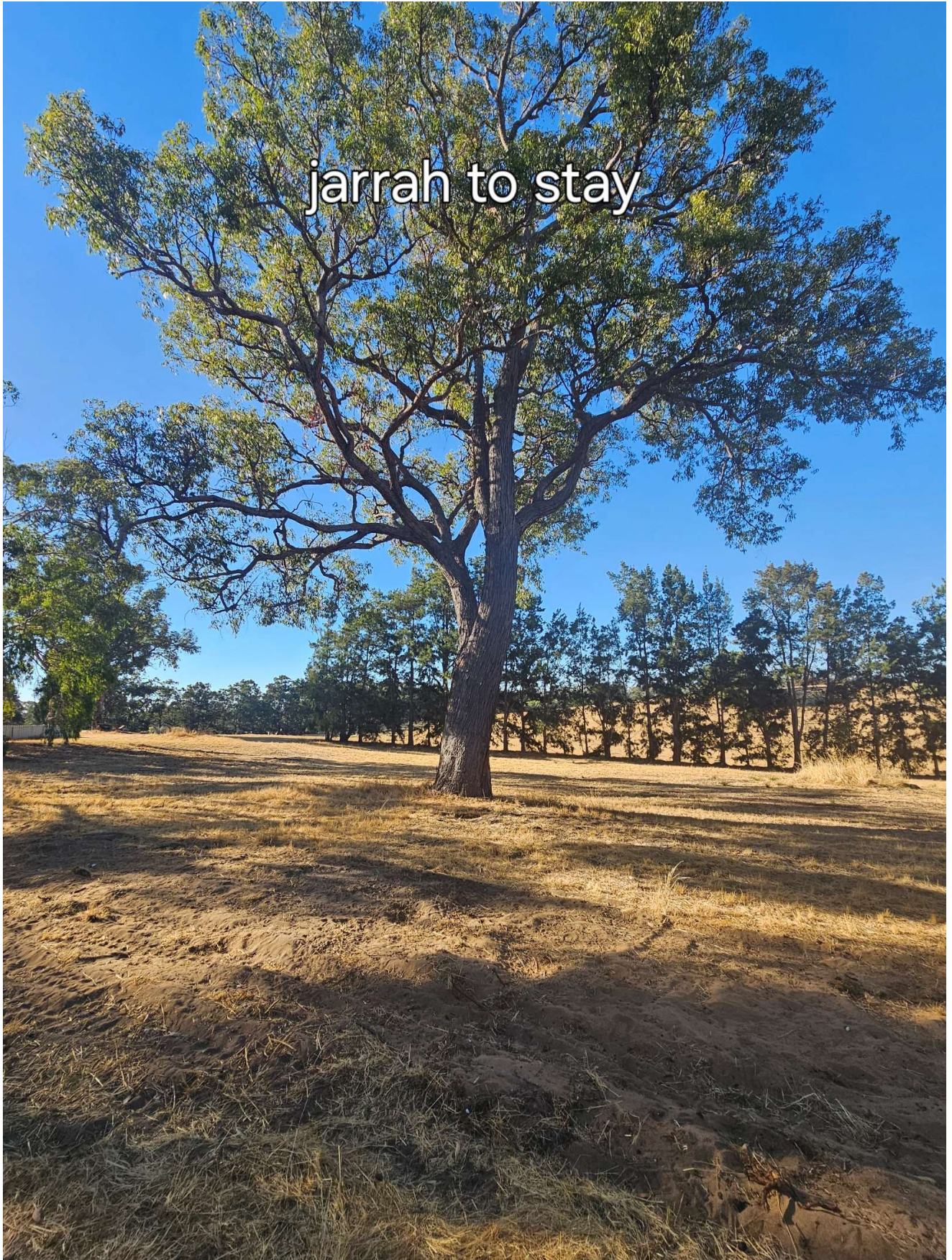






Dead Jarrah, Tuart and Wattle trees to remain – all other Peppy trees and dead fall to be cleared.

jarrah to stay





all trees to stay









