

## **Application for referral to clear native vegetation - Infrastructure Areas Vegetation Assessment February 2025**

Hazard reports have been raised relating to vegetation in close vicinity to Infrastructure. A review was completed and no clearing permit exists over the Infrastructure areas. Exemptions do apply outside of the Christmas Island Environmental Sensitive Area (ESA) being the following:

- Regulation 5, Item 15 – Clearing to maintain existing cleared areas around infrastructure etc. Applies if lawfully cleared within 10 years.
- Regulation 5, Item 20 - Clearing resulting from low impact or other mineral activities within an approved Mining Proposal/NOI. Maximum 10 hectares per year per tenement.
- Weeds do not require a clearing permit.

Of the 27 hectare footprint, majority of the area is cleared of native vegetation (~72%) and ~80% of the total area is outside the ESA (Figure 1; Figure 2). The majority of remaining vegetation is primarily weed dominated or low environmental value.

The Infrastructure areas of MCI 70/1A, GCI 70/1 and GCI 70/2 were assessed to support a Referral application under section 51DA of the *Environment Protection Act 1986* (Figure 1; Figure 2). This Referral will allow the areas with some native vegetation regrowth within the ESA to be cleared to manage offsets from infrastructure and other safety risks.

A field vegetation assessment was undertaken by Ms Khaliesha Mohamed Amin, assisted by Ms Kate Ryan, of Christmas Island Phosphates' Environment team on 12 February 2025. Ms Amin has extensive experience in botanical surveying, and having grown up on the island, has considerable local knowledge of the flora and fauna.

The vegetation assessments were conducted by ranking the vegetation condition of each site based on the Keighery Condition Scale (Keighery, B.J. 1994), with some allowances and modifications made to accommodate the unique tropical environment on Christmas Island (Table 1).

Table 1: Modified Vegetation Condition Score (Keighery, B.J. 1994)

Condition Rating	Keighery Definition	Christmas Island Definition
Pristine (1)	Pristine or nearly so, no obvious signs of disturbance	Mature, undisturbed rainforest or very advanced secondary regrowth. Disturbance is limited to cyclone damage. Climax species dominate and full structural complexity is present with epiphytic orchids and ferns, terrestrial orchids and ferns, <i>Pandanus</i> , palms, buttressing and woody lianes
Excellent (2)	Vegetation structure intact, disturbance affecting individual species and weeds are non-aggressive species	Little to no weed species and a largely intact landform with few signs of disturbance. The vegetation structure is beginning to develop the full complexity and diversity expected in rainforest, with climax species present and a range of features included such as buttressing, palms, ferns, epiphytes and orchids, but the canopy is likely to be more open than in undisturbed rainforest
Very Good (3)	Vegetation structure altered, obvious signs of disturbance. For example, disturbance to vegetation structure caused by repeated fires, the presence of some more aggressive weeds, dieback, logging and grazing	Low diversity vegetation with few signs of disturbance or moderately diverse vegetation on a disturbed landform, a canopy dominated by pioneer species through recruitment of climax species may be evident, an open canopy or poor structural complexity. Few weeds present or weeds are limited to less aggressive species.
Good (4)	Vegetation structure significantly altered by very obvious signs of multiple disturbance. Retains basic vegetation structure or ability to regenerate it. For example, disturbance to vegetation structure caused by very frequent fires, the presence of some very aggressive weeds at high density, partial clearing, dieback and grazing	Multiple signs of disturbance or with low diversity and no structural complexity. Typically displays little to no recruitment of climax tree species. Numerous weeds present or a dense understory dominated by one or two native fern species
Degraded (5)	Basic vegetation structure severely impacted by disturbance. Scope for regeneration but not to a state approaching good condition without intensive management. For example, disturbance to vegetation structure caused by very frequent fires, the presence of very aggressive weeds, partial clearing, dieback and grazing	Vegetation at very early successional stages with a canopy of one to two species and an understory dominated by ferns or weeds, typically adjacent to completely degraded land. May have the potential to develop into better quality vegetation as the canopy develops if weeds are managed
Completely degraded (6)	The structure of the vegetation is no longer intact, and the area is completely or almost completely without native species. These areas are often described as 'parkland cleared' with the flora comprising weed or crop species with isolated native trees or shrubs	The structures of primary rainforest are no longer present and native species are limited to only a few species, for example weed dominated shrubland with sparse emergent <i>Macaranga</i> or a near monoculture <i>Nephrolepis biserrata</i> fernland. The landscape may be highly disturbed, often with significantly reduced soil and pinnacles exposed. Predominantly lacking a native canopy and with little to no potential to develop one due to dense groundcover of shallow soil
Cleared of Vegetation (7)	-	Areas that are not vegetated either of bare ground or covered by infrastructure. Some weeds may be present.



Figure 1: Infrastructure Areas (Tenure, ESA, Groundtruthing)

\*All GPS coordinates are in GDA2020/MGA Zone48



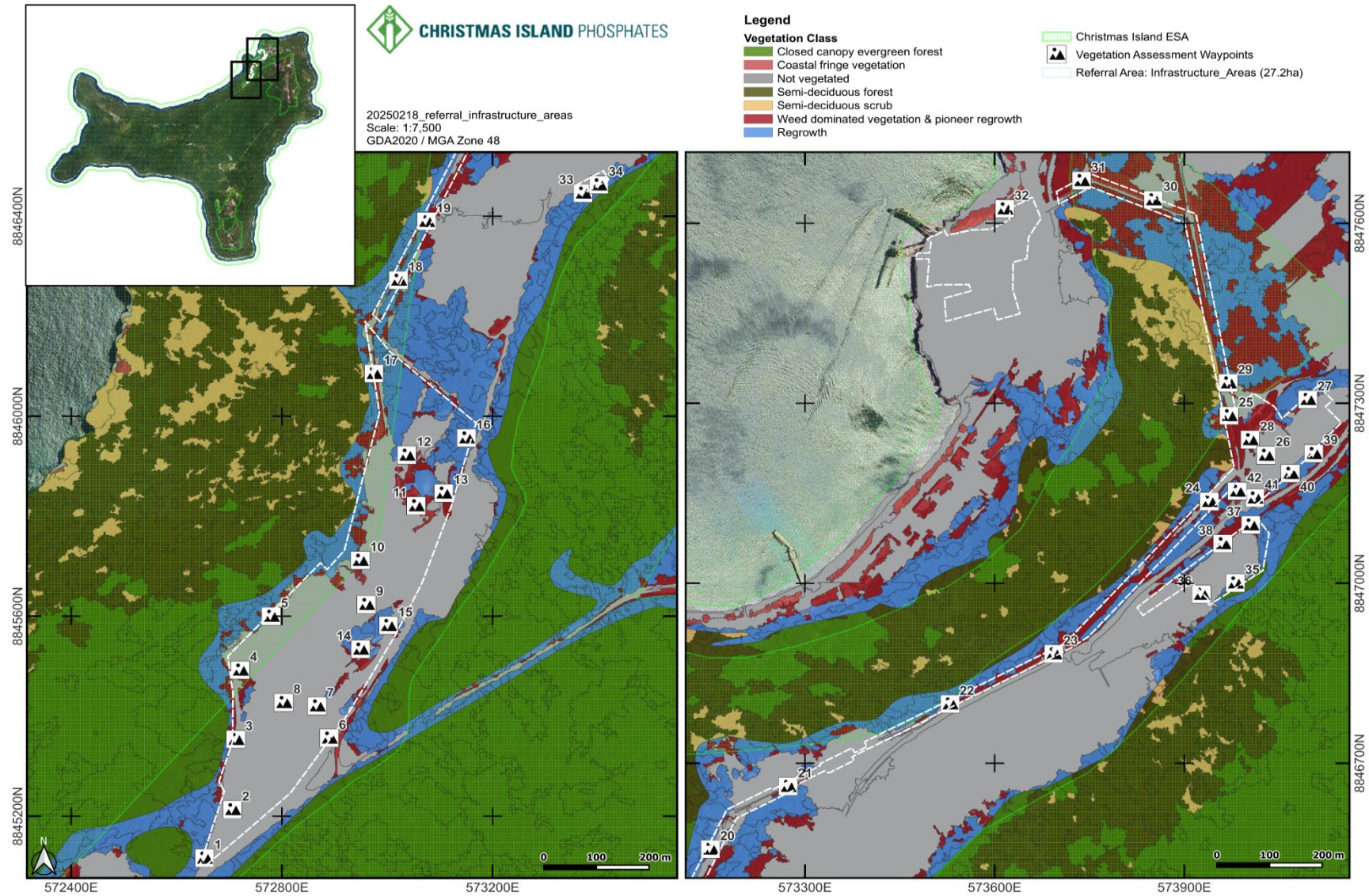
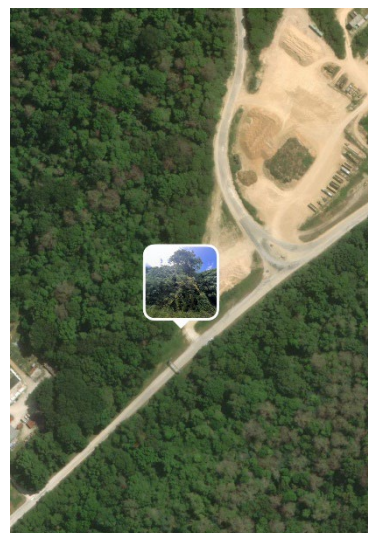
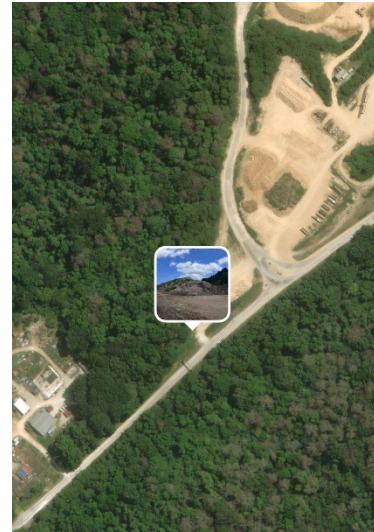


Figure 2: Referral Boundary with Vegetation Mapping (2011)



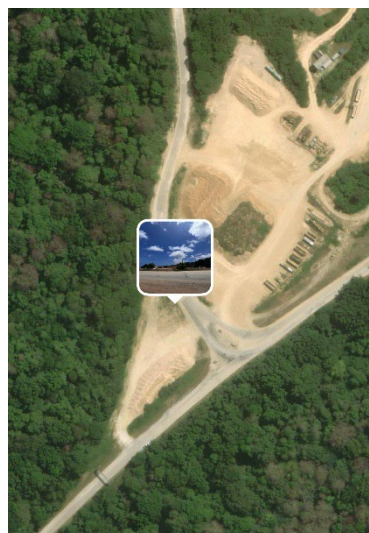


<b>Waypoint Reference</b>	1
<b>Site</b>	LB4/ROM
<b>Tenement</b>	GCI 70/1
<b>GPS Coordinates</b>	N 8845116.0471, E 572652.7407
<b>Photo Direction</b>	280° W
<b>Native Vegetation</b>	<i>Macaranga tanarius</i> <i>Pipturus argenteus</i>
<b>Weed Species</b>	<i>Leucaena leucocephala</i> Other weed species
<b>Vegetation Rating (1=Pristine, 7=Cleared)</b>	5, 6, 7
<b>ESA</b>	Outside, exemptions apply
<b>Notes</b>	Mature trees present, good regeneration. The boundary is ~5-8m into forest from a cleared area, as a buffer zone.

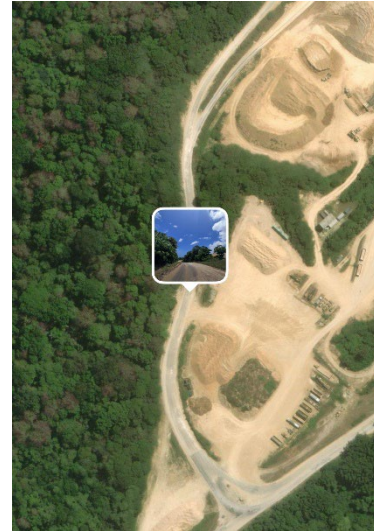


<b>Waypoint Reference</b>	1
<b>Site</b>	LB4/ROM
<b>Tenement</b>	GCI 70/1
<b>GPS Coordinates</b>	N 8845116.0471, E 572652.7407
<b>Photo Direction</b>	75° NE
<b>Native Vegetation</b>	-
<b>Weed Species</b>	<i>Leucaena leucocephala</i> <i>Muntingia calabura</i> Other weed species
<b>Vegetation Rating (1=Pristine, 7=Cleared)</b>	7
<b>ESA</b>	Outside, exemptions apply
<b>Notes</b>	Disturbed, used as a laydown area. Stockpile of product hauled from mining field.



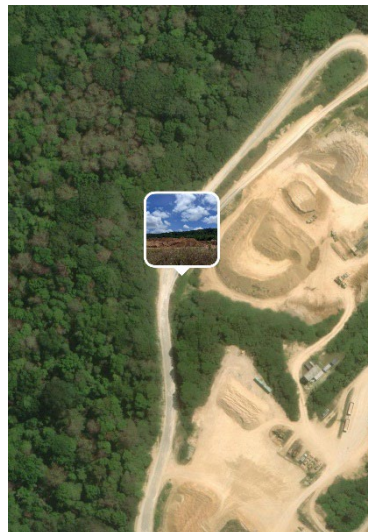


<b>Waypoint Reference</b>	2
<b>Site</b>	LB4
<b>Tenement</b>	GCI 70/1
<b>GPS Coordinates</b>	N 8845213.0198, E 572705.9151
<b>Photo Direction</b>	28° NE
<b>Native Vegetation</b>	-
<b>Weed Species</b>	<i>Leucaena leucocephala</i> <i>Musa acuminata</i> Other weed species
<b>Vegetation Rating (1=Pristine, 7=Cleared)</b>	7
<b>ESA</b>	Outside, exemptions apply
<b>Notes</b>	Road - laydown area. Stockpile of product hauled from mining field.

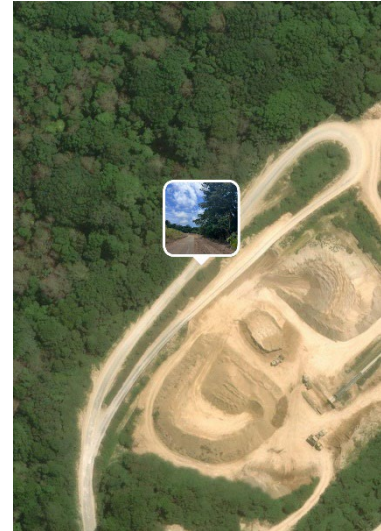


<b>Waypoint Reference</b>	3
<b>Site</b>	ROM
<b>Tenement</b>	MCI 70/1A
<b>GPS Coordinates</b>	N 8845353.6514, E 572712.3482
<b>Photo Direction</b>	344° N
<b>Native Vegetation</b>	<i>Macaranga tanarius</i> <i>Tristiropsis acutangula</i> <i>Arenga listeri</i>
<b>Weed Species</b>	<i>Leucaena leucocephala</i> <i>Musa acuminata</i> <i>Ricinus communis</i> <i>Carica papaya</i> <i>Colocasia esculenta</i> <i>Muntingia calabura</i> Other weed species
<b>Vegetation Rating (1=Pristine, 7=Cleared)</b>	5, 6, 7
<b>ESA</b>	Inside, exemptions do not apply
<b>Notes</b>	Vegetation along road. Road access to Tip-head.



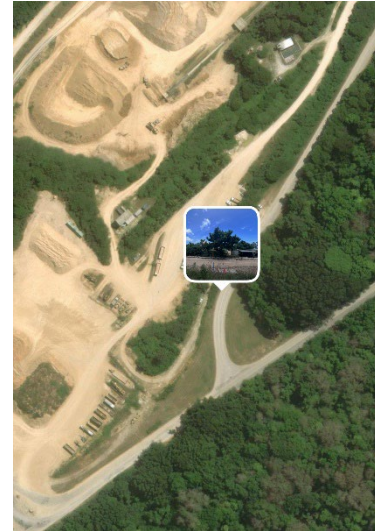


<b>Waypoint Reference</b>	4
<b>Site</b>	ROM
<b>Tenement</b>	MCI 70/1A
<b>GPS Coordinates</b>	N 8845492.0729, E 572720.7307
<b>Photo Direction</b>	68° E
<b>Native Vegetation</b>	-
<b>Weed Species</b>	<i>Muntingia calabura</i> Other weed species
<b>Vegetation Rating (1=Pristine, 7=Cleared)</b>	7
<b>ESA</b>	Inside, exemptions do not apply
<b>Notes</b>	Track / Laydown area. Stockpile of product hauled from mining field. Weed species on windrow.

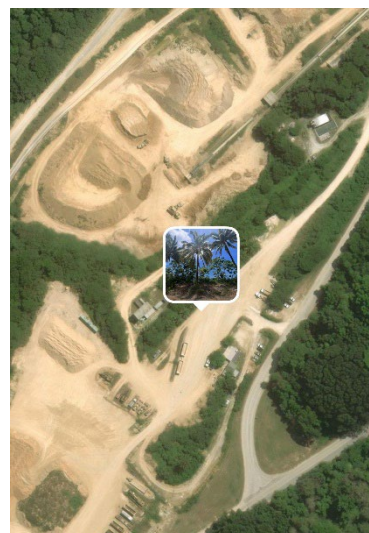


<b>Waypoint Reference</b>	5
<b>Site</b>	ROM
<b>Tenement</b>	GCI 70/2
<b>GPS Coordinates</b>	N 8845599.7664, E 572779.5155
<b>Photo Direction</b>	220° SW
<b>Native Vegetation</b>	<i>Macaranga tanarius</i> <i>Ficus macrocarpa</i>
<b>Weed Species</b>	<i>Leucaena leucocephala</i> <i>Ricinus communis</i> Other weed species
<b>Vegetation Rating (1=Pristine, 7=Cleared)</b>	6, 7
<b>ESA</b>	Inside, exemptions do not apply
<b>Notes</b>	Road exiting Tip-head. Vegetation along track, overhanging Ficus limbs.



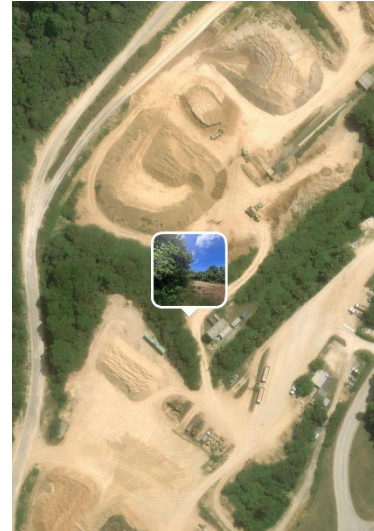


<b>Waypoint Reference</b>	6
<b>Site</b>	LB4 Office/Makan Hut
<b>Tenement</b>	MCI 70/1A
<b>GPS Coordinates</b>	N 8845356.1608, E 572889.5502
<b>Photo Direction</b>	302° NW
<b>Native Vegetation</b>	<i>Macaranga tanarius</i>
<b>Weed Species</b>	<i>Persea americana</i> <i>Leucaena leucocephala</i> <i>Musa acuminata</i> <i>Mangifera indica</i> <i>Carica papaya</i> <i>Cocos nucifera</i> <i>Artocarpus heterophyllus</i> <i>Pandanus amaryllifolius</i> Other weed species
<b>Vegetation Rating (1=Pristine, 7=Cleared)</b>	6, 7
<b>ESA</b>	Outside, exemptions apply
<b>Notes</b>	From Murray Road looking towards LB4 Makan Hut. Vegetation consists of mainly fruit trees.



<b>Waypoint Reference</b>	7
<b>Site</b>	LB4
<b>Tenement</b>	MCI 70/1A
<b>GPS Coordinates</b>	N 8845420.4471, E 572866.5946
<b>Photo Direction</b>	277° W
<b>Native Vegetation</b>	<i>Macaranga tanarius</i>
<b>Weed Species</b>	<i>Cocos nucifera</i> <i>Muntingia calabura</i> Other weed species
<b>Vegetation Rating (1=Pristine, 7=Cleared)</b>	6, 7
<b>ESA</b>	Outside, exemptions apply
<b>Notes</b>	Laydown / Road Train Parking.

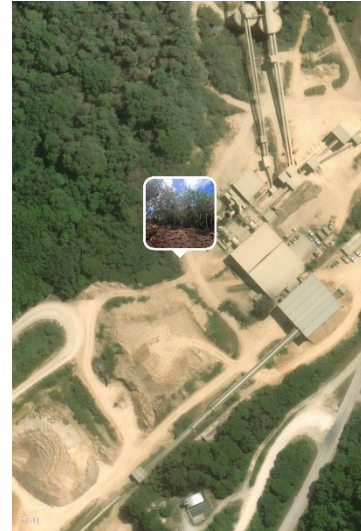




<b>Waypoint Reference</b>	8
<b>Site</b>	Track from LB4 to ROM
<b>Tenement</b>	MCI 70/1A
<b>GPS Coordinates</b>	N 8845427.3278, E 572803.2346
<b>Photo Direction</b>	304° NW
<b>Native Vegetation</b>	<i>Macaranga tanarius</i> <i>Asplenium nidus</i> <i>Schefflera elliptica</i> <i>Tristiropsis acutangula</i> <i>Dysoxylum gaudichaudianum</i>
<b>Weed Species</b>	<i>Leucaena leucocephala</i> <i>Carica papaya</i> <i>Muntingia calabura</i> Other weed species
<b>Vegetation Rating (1=Pristine, 7=Cleared)</b>	5, 6, 7
<b>ESA</b>	Outside, exemptions apply
<b>Notes</b>	Disturbed - vegetation growth dominated by weed species.



<b>Waypoint Reference</b>	9
<b>Site</b>	ROM
<b>Tenement</b>	MCI 70/1A
<b>GPS Coordinates</b>	N 8845623.2698, E 572960.2676
<b>Photo Direction</b>	117° SE
<b>Native Vegetation</b>	<i>Macaranga tanarius</i> <i>Arenga listeri</i> <i>Dysoxylum gaudichaudianum</i> <i>Maclura cochinchinensis</i>
<b>Weed Species</b>	<i>Leucaena leucocephala</i> <i>Mangifera indica</i> <i>Carica papaya</i> Other weed species
<b>Vegetation Rating (1=Pristine, 7=Cleared)</b>	5, 6, 7
<b>ESA</b>	Outside, exemptions apply
<b>Notes</b>	Disturbed. Looking towards Bio Shed.

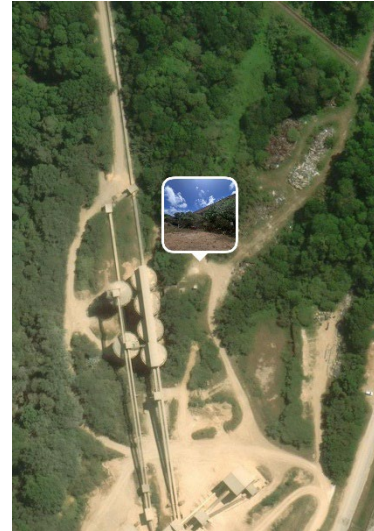


<b>Waypoint Reference</b>	10
<b>Site</b>	Dryers
<b>Tenement</b>	MCI 70/1A
<b>GPS Coordinates</b>	N 8845711.7506, E 572948.4177
<b>Photo Direction</b>	292° NW
<b>Native Vegetation</b>	<i>Maclura cochinchinensis</i>
<b>Weed Species</b>	<i>Leucaena leucocephala</i> <i>Muntingia calabura</i> Other weed species
<b>Vegetation Rating (1=Pristine, 7=Cleared)</b>	6, 7
<b>ESA</b>	Inside, exemptions do not apply
<b>Notes</b>	Disturbed - weed dominated. Between reject stockpile and Baghouse.

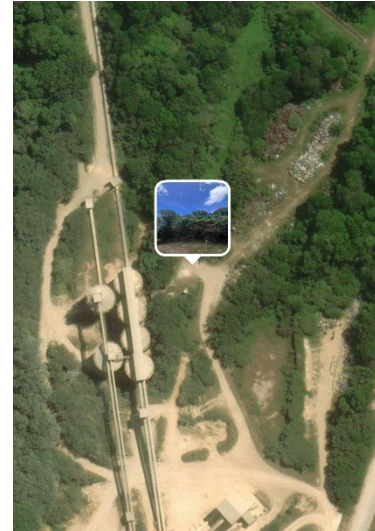




<b>Waypoint Reference</b>	11
<b>Site</b>	Dryers
<b>Tenement</b>	MCI 70/1A
<b>GPS Coordinates</b>	N 8845820.6598, E 573054.5999
<b>Photo Direction</b>	32° NE
<b>Native Vegetation</b>	<i>Macaranga tanarius</i>
<b>Weed Species</b>	<i>Muntingia calabura</i> <i>Leucaena leucocephala</i> <i>Ricinus communis</i> Other weed species
<b>Vegetation Rating (1=Pristine, 7=Cleared)</b>	6, 7
<b>ESA</b>	Outside, exemptions apply
<b>Notes</b>	Operational processing area. Outside Crusher House.

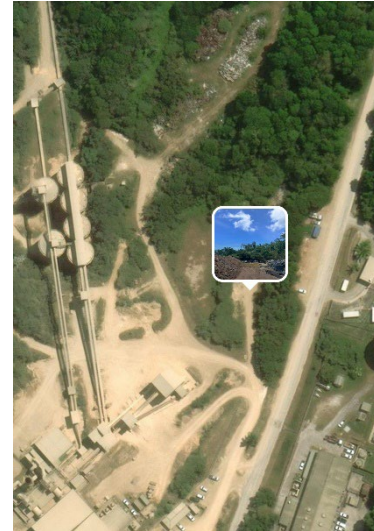


<b>Waypoint Reference</b>	12
<b>Site</b>	Cross Country
<b>Tenement</b>	MCI 70/1A
<b>GPS Coordinates</b>	N 8845922.1007, E 573036.8601
<b>Photo Direction</b>	240° SW
<b>Native Vegetation</b>	<i>Macaranga tanarius</i>
<b>Weed Species</b>	<i>Muntingia calabura</i> <i>Leucaena leucocephala</i> <i>Mangifera indica</i> <i>Cocos nucifera</i> Other weed species
<b>Vegetation Rating (1=Pristine, 7=Cleared)</b>	6, 7
<b>ESA</b>	Outside, exemptions apply
<b>Notes</b>	Operational area. Top of Cross Country Control Room, entrance of Scrap Yard.



<b>Waypoint Reference</b>	12
<b>Site</b>	Cross Country
<b>Tenement</b>	MCI 70/1A
<b>GPS Coordinates</b>	N 8845922.1007, E 573036.8601
<b>Photo Direction</b>	25° N
<b>Native Vegetation</b>	<i>Macaranga tanarius</i> <i>Maclura cochinchinensis</i>
<b>Weed Species</b>	<i>Leucaena leucocephala</i> <i>Musa acuminata</i> <i>Carica papaya</i> Other weed species
<b>Vegetation Rating (1=Pristine, 7=Cleared)</b>	6, 7
<b>ESA</b>	Outside, exemptions apply
<b>Notes</b>	Operational area. Top of Cross Country Control Room, entrance of Scrap Yard.

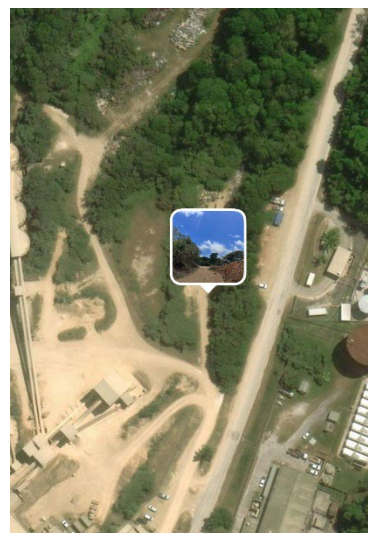




<b>Waypoint Reference</b>	13
<b>Site</b>	Conveyor Belt Storage Area
<b>Tenement</b>	MCI 70/1A
<b>GPS Coordinates</b>	N 8845846.2036, E 573106.9650
<b>Photo Direction</b>	355° N
<b>Native Vegetation</b>	<i>Macaranga tanarius</i> <i>Schefflera elliptica</i> <i>Arenga listeri</i> <i>Maclura cochinchinensis</i> <i>Dysoxylum gaudichaudianum</i> <i>Tristiropsis acutangula</i>
<b>Weed Species</b>	<i>Leucaena leucocephala</i> <i>Muntingia calabura</i> Other weed species
<b>Vegetation Rating (1=Pristine, 7=Cleared)</b>	5, 6, 7
<b>ESA</b>	Outside, exemptions apply
<b>Notes</b>	Laydown. Area for storage of used conveyor belts.

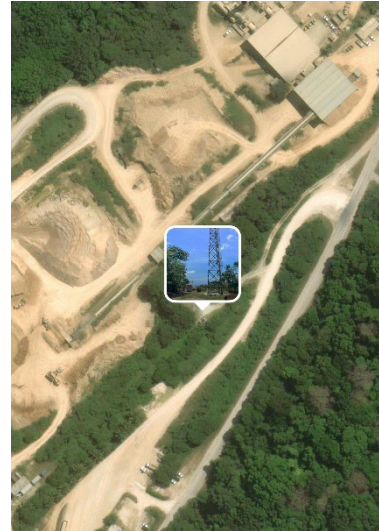


<b>Waypoint Reference</b>	13
<b>Site</b>	Conveyor Belt Storage Area
<b>Tenement</b>	MCI 70/1A
<b>GPS Coordinates</b>	N 8845846.2036, E 573106.9650
<b>Photo Direction</b>	77° E
<b>Native Vegetation</b>	Schefflera elliptica Macaranga tanarius Tristiropsis acutangula Arenga listeri Dysoxylum gaudichaudianum Maclura cochinchinensis
<b>Weed Species</b>	<i>Leucaena leucocephala</i> Other weed species
<b>Vegetation Rating (1=Pristine, 7=Cleared)</b>	5, 6, 7
<b>ESA</b>	Outside, exemptions apply
<b>Notes</b>	Laydown. Area for storage of used conveyor belts.

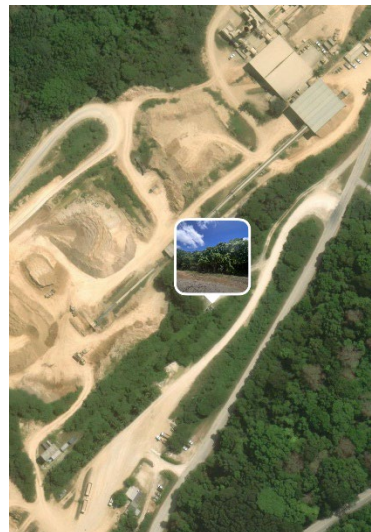


<b>Waypoint Reference</b>	13
<b>Site</b>	Conveyor Belt Storage Area
<b>Tenement</b>	MCI 70/1A
<b>GPS Coordinates</b>	N 8845846.2036, E 573106.9650
<b>Photo Direction</b>	163° S
<b>Native Vegetation</b>	<i>Macaranga tanarius</i>
<b>Weed Species</b>	<i>Leucaena leucocephala</i> <i>Cocos nucifera</i> <i>Muntingia calabura</i> Other weed species
<b>Vegetation Rating (1=Pristine, 7=Cleared)</b>	6, 7
<b>ESA</b>	Outside, exemptions apply
<b>Notes</b>	Laydown. Area for storage of used conveyor belts.

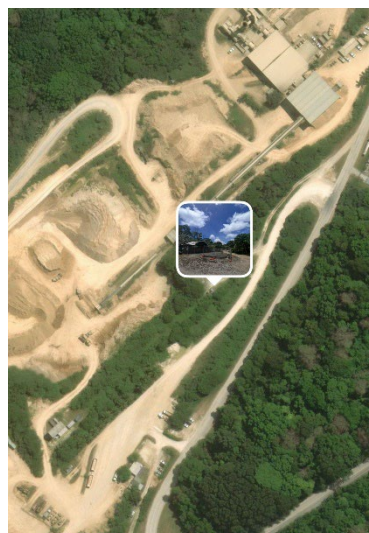




<b>Waypoint Reference</b>	14
<b>Site</b>	Incinerator
<b>Tenement</b>	MCI 70/1A
<b>GPS Coordinates</b>	N 8845534.0592, E 572949.0246
<b>Photo Direction</b>	311° NW
<b>Native Vegetation</b>	Macaranga tanarius Maclura cochinchinensis Schefflera elliptica Barringtonia racemosa Dysoxylum gaudichaudianum
<b>Weed Species</b>	<i>Cocos nucifera</i> <i>Leucaena leucocephala</i> <i>Muntingia calabura</i> Other weed species
<b>Vegetation Rating (1=Pristine, 7=Cleared)</b>	6, 7
<b>ESA</b>	Outside, exemptions apply
<b>Notes</b>	Operational area. Area for incineration of hydrocarbon waste.

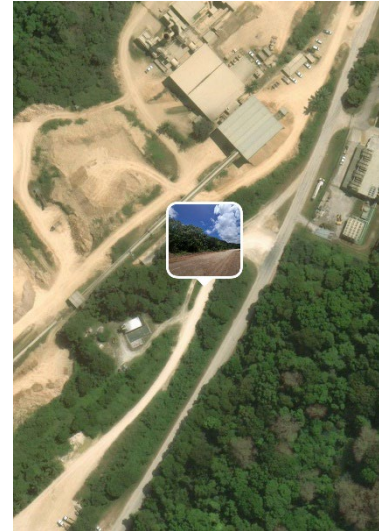


<b>Waypoint Reference</b>	14
<b>Site</b>	Incinerator
<b>Tenement</b>	MCI 70/1A
<b>GPS Coordinates</b>	N 8845534.0592, E 572949.0246
<b>Photo Direction</b>	108° E
<b>Native Vegetation</b>	<i>Macaranga tanarius</i>
<b>Weed Species</b>	<i>Musa acuminata</i> <i>Muntingia calabura</i> <i>Leucaena leucocephala</i> Other weed species
<b>Vegetation Rating (1=Pristine, 7=Cleared)</b>	6, 7
<b>ESA</b>	Outside, exemptions apply
<b>Notes</b>	Operational area. Area for incineration of hydrocarbon waste.



<b>Waypoint Reference</b>	14
<b>Site</b>	Incinerator
<b>Tenement</b>	MCI 70/1A
<b>GPS Coordinates</b>	N 8845534.0592, E 572949.0246
<b>Photo Direction</b>	63° NE
<b>Native Vegetation</b>	<i>Macaranga tanarius</i> <i>Arenga listeri</i>
<b>Weed Species</b>	<i>Leucaena leucocephala</i> Other weed species
<b>Vegetation Rating (1=Pristine, 7=Cleared)</b>	7
<b>ESA</b>	Outside, exemptions apply
<b>Notes</b>	Operational area. Area for incineration of hydrocarbon waste.

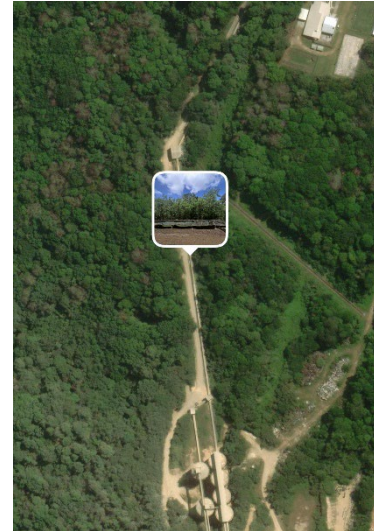




<b>Waypoint Reference</b>	15
<b>Site</b>	Entrance to Incinerator
<b>Tenement</b>	MCI 70/1A
<b>GPS Coordinates</b>	N 8845581.4934, E 573001.9951
<b>Photo Direction</b>	167° S
<b>Native Vegetation</b>	<i>Macaranga tanarius</i> <i>Arenga listeri</i> <i>Dysoxylum gaudichaudianum</i> <i>Schefflera elliptica</i>
<b>Weed Species</b>	<i>Leucaena leucocephala</i> <i>Carica papaya</i> <i>Ricinus communis</i> Other weed species
<b>Vegetation Rating (1=Pristine, 7=Cleared)</b>	5, 6, 7
<b>ESA</b>	Outside, exemptions apply
<b>Notes</b>	Vegetation along road. Vegetation buffer along Murray Road.

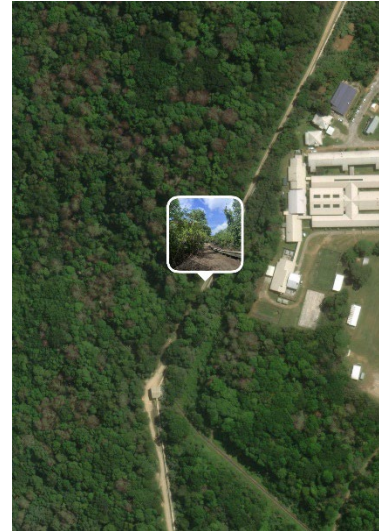


<b>Waypoint Reference</b>	16
<b>Site</b>	Murray Road
<b>Tenement</b>	MCI 70/1A
<b>GPS Coordinates</b>	N 8845956.3537, E 573150.1536
<b>Photo Direction</b>	286° W
<b>Native Vegetation</b>	<i>Dysoxylum gaudichaudianum</i> <i>Macaranga tanarius</i> <i>Claoxylon indicum</i> <i>Maclura cochinchinensis</i> <i>Tristiropsis acutangula</i> <i>Arenga listeri</i> <i>Asplenium nidus</i> <i>Leea angulata</i>
<b>Weed Species</b>	<i>Leucaena leucocephala</i> Other weed species
<b>Vegetation Rating (1=Pristine, 7=Cleared)</b>	4, 5 – good condition internally, degraded on the fringes
<b>ESA</b>	Outside, exemptions apply
<b>Notes</b>	Healthy vegetation growth. ~40m of vegetation between Murray Road and Scrap Yard.



<b>Waypoint Reference</b>	17
<b>Site</b>	Cross Country Conveyors
<b>Tenement</b>	MCI 70/1A
<b>GPS Coordinates</b>	N 8846085.2137, E 572974.4892
<b>Photo Direction</b>	37° NE
<b>Native Vegetation</b>	<i>Macaranga tanarius</i> <i>Dysoxylum gaudichaudianum</i> <i>Leea angulata</i> <i>Arenga listeri</i> <i>Melochia umbellata</i> <i>Maclura cochinchinensis</i>
<b>Weed Species</b>	<i>Leucaena leucocephala</i> <i>Musa acuminata</i> <i>Muntingia calabura</i> Other weed species
<b>Vegetation Rating (1=Pristine, 7=Cleared)</b>	6, 7
<b>ESA</b>	Inside, exemptions do not apply
<b>Notes</b>	Along PS10 Conveyor. Operational area – Vegetation along track and overhanging limbs.

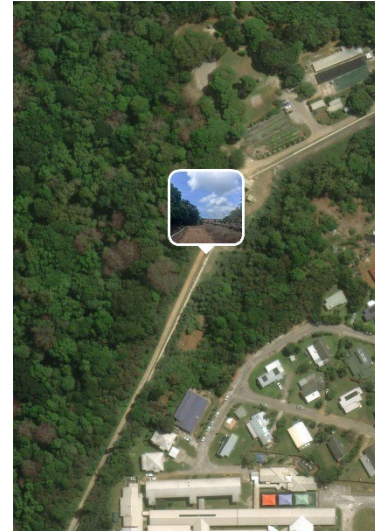




<b>Waypoint Reference</b>	18
<b>Site</b>	Cross Country Conveyors
<b>Tenement</b>	MCI 70/1A
<b>GPS Coordinates</b>	N 8846271.9901, E 573021.1856
<b>Photo Direction</b>	21° N
<b>Native Vegetation</b>	<i>Inocarpus fagifer</i> <i>Terminalia catappa</i> <i>Maclura cochinchinensis</i> <i>Macaranga tanarius</i> <i>Tristiropsis acutangula</i> <i>Gyrocarpus americanus</i> <i>Ficus microcarpa</i> <i>Barringtonia racemosa</i>
<b>Weed Species</b>	<i>Leucaena leucocephala</i> Other weed species
<b>Vegetation Rating (1=Pristine, 7=Cleared)</b>	5, 7
<b>ESA</b>	Inside, exemptions do not apply
<b>Notes</b>	Along C1 Conveyor (bottom of hill). Operational area – Vegetation along track and overhanging limbs.

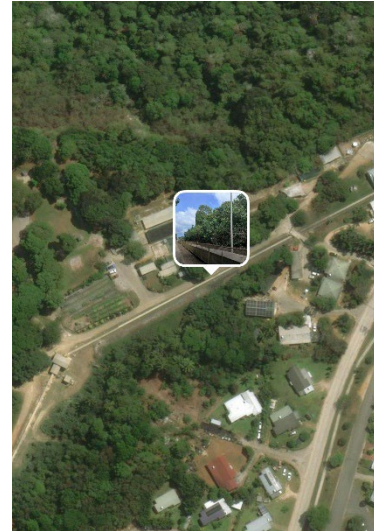


<b>Waypoint Reference</b>	19
<b>Site</b>	Cross Country Conveyors
<b>Tenement</b>	MCI 70/1A
<b>GPS Coordinates</b>	N 8846389.6308, E 573074.1861
<b>Photo Direction</b>	34° NE
<b>Native Vegetation</b>	<i>Arenga listeri</i> <i>Macaranga tanarius</i> <i>Celtis timorensis</i> <i>Maclura cochinchinensis</i>
<b>Weed Species</b>	<i>Leucaena leucocephala</i> <i>Muntigia calabura</i> <i>Musa acuminata</i> Other weed species
<b>Vegetation Rating (1=Pristine, 7=Cleared)</b>	6, 7
<b>ESA</b>	Outside, exemptions apply
<b>Notes</b>	Along C1 Conveyor. Operational area – Vegetation along track and overhanging limbs.

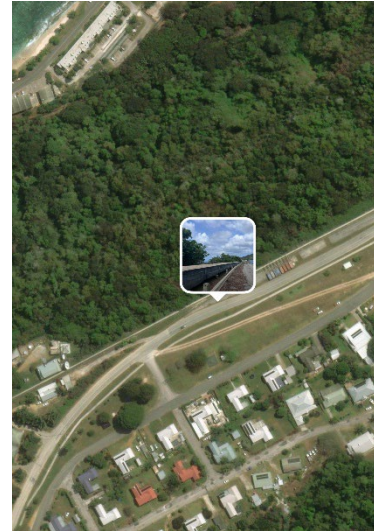


<b>Waypoint Reference</b>	20
<b>Site</b>	Cross Country Conveyors
<b>Tenement</b>	MCI 70/1A
<b>GPS Coordinates</b>	N 8846556.7703, E 573150.3926
<b>Photo Direction</b>	52° NE
<b>Native Vegetation</b>	<i>Macaranga tanarius</i> <i>Ficus microcarpa</i> <i>Maclura cochinchinensis</i>
<b>Weed Species</b>	<i>Leucaena leucocephala</i> <i>Cocos nucifera</i> Other weed species
<b>Vegetation Rating (1=Pristine, 7=Cleared)</b>	7
<b>ESA</b>	Outside, exemptions apply
<b>Notes</b>	Along C1 Conveyor, before C1/C2 Transfer Station. Operational area – Vegetation along track and overhanging limbs.

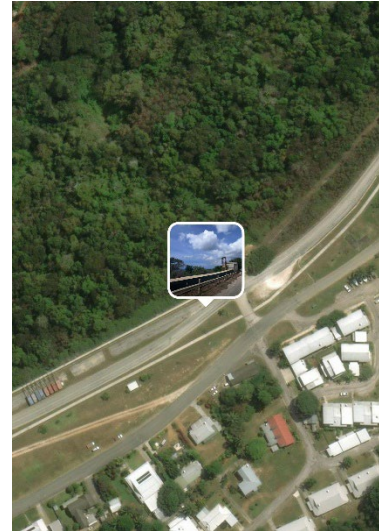




<b>Waypoint Reference</b>	21
<b>Site</b>	Cross Country Conveyors
<b>Tenement</b>	MCI 70/1A
<b>GPS Coordinates</b>	N 8846661.3341, E 573273.2019
<b>Photo Direction</b>	55° NE
<b>Native Vegetation</b>	<i>Hibiscus tiliaceus</i>
<b>Weed Species</b>	<i>Leucaena leucocephala</i> <i>Cocos nucifera</i> <i>Mangifera indica</i> Other weed species
<b>Vegetation Rating (1=Pristine, 7=Cleared)</b>	6, 7
<b>ESA</b>	Outside, exemptions apply
<b>Notes</b>	Along C2 Conveyor, outside Park's Nursery. Operational area - overhanging limbs.

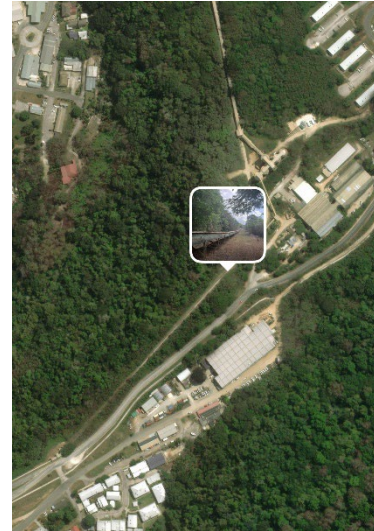


<b>Waypoint Reference</b>	22
<b>Site</b>	Cross Country Conveyors
<b>Tenement</b>	MCI 70/1A
<b>GPS Coordinates</b>	N 8846798.7950, E 573529.2853
<b>Photo Direction</b>	34° NE
<b>Native Vegetation</b>	<i>Tristiropsis acutangula</i> <i>Macaranga tanarius</i>
<b>Weed Species</b>	<i>Delonix regia</i> Other weed species
<b>Vegetation Rating (1=Pristine, 7=Cleared)</b>	6, 7
<b>ESA</b>	Outside, exemptions apply
<b>Notes</b>	Along C2 Conveyor, on Murray Road. Operational area – Vegetation on edge of cliff and overhanging limbs.

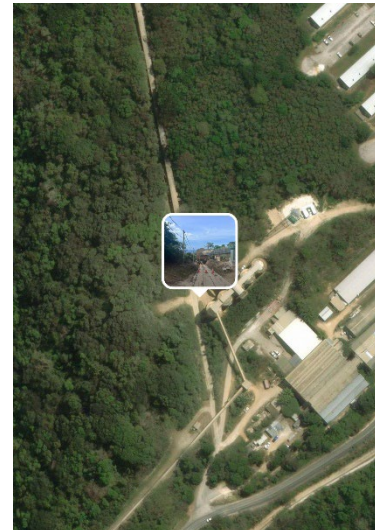


<b>Waypoint Reference</b>	23
<b>Site</b>	Cross Country Conveyors
<b>Tenement</b>	MCI 70/1A
<b>GPS Coordinates</b>	N 8846882.3698, E 573693.4289
<b>Photo Direction</b>	34° NE
<b>Native Vegetation</b>	<i>Dysoxylum gaudichaudianum</i> <i>Terminalia catappa</i> <i>Hibiscus tiliaceus</i>
<b>Weed Species</b>	<i>Leucaena leucocephala</i> <i>Delonix regia</i> <i>Spathodea campanulata</i> Other weed species
<b>Vegetation Rating (1=Pristine, 7=Cleared)</b>	6, 7
<b>ESA</b>	Outside, exemptions apply
<b>Notes</b>	Along C2, before C2/C3 Transfer Station, on Murray Road. Operational area - Vegetation on edge of cliff and overhanging limbs.

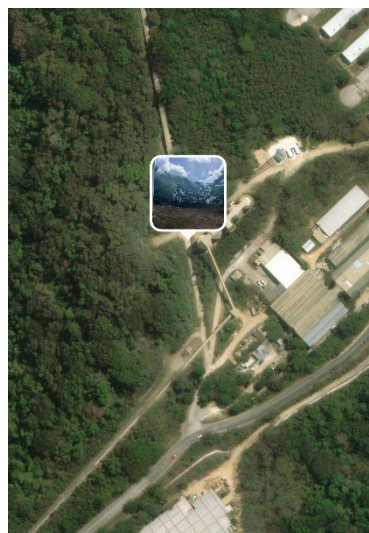




<b>Waypoint Reference</b>	24
<b>Site</b>	Cross Country Conveyors
<b>Tenement</b>	MCI 70/1A
<b>GPS Coordinates</b>	N 8847136.1654, E 573939.4795
<b>Photo Direction</b>	208° SW
<b>Native Vegetation</b>	<i>Macaranga tanarius</i> <i>Maclura cochinchinensis</i> <i>Ficus microcarpa</i> <i>Dysoxylum gaudichaudianum</i>
<b>Weed Species</b>	<i>Leucaena leucocephala</i> <i>Delonix regia</i> Other weed species
<b>Vegetation Rating (1=Pristine, 7=Cleared)</b>	6, 7
<b>ESA</b>	Outside, exemptions apply
<b>Notes</b>	Along C3 Conveyors. Operational area – overhanging limbs.



<b>Waypoint Reference</b>	25
<b>Site</b>	Downhill
<b>Tenement</b>	MCI 70/1A
<b>GPS Coordinates</b>	N 8847279.3830, E 573970.7220
<b>Photo Direction</b>	20° NE
<b>Native Vegetation</b>	<i>Macaranga tanarius</i>
<b>Weed Species</b>	<i>Muntingia calabura</i> <i>Leucaena leucocephala</i> <i>Delonix regia</i> Other weed species
<b>Vegetation Rating (1=Pristine, 7=Cleared)</b>	6, 7
<b>ESA</b>	Inside, exemptions do not apply
<b>Notes</b>	Incline. Operational area – vegetation along incline and overhanging limbs.



<b>Waypoint Reference</b>	25
<b>Site</b>	Downhill
<b>Tenement</b>	MCI 70/1A
<b>GPS Coordinates</b>	N 8847279.3830, E 573970.7220
<b>Photo Direction</b>	274° W
<b>Native Vegetation</b>	<i>Macaranga tanarius</i> <i>Dysoxylum gaudichaudianum</i>
<b>Weed Species</b>	<i>Delonix regia</i> <i>Muntingia calabura</i> <i>Leucaena leucocephala</i> Other weed species
<b>Vegetation Rating (1=Pristine, 7=Cleared)</b>	7
<b>ESA</b>	Inside, exemptions do not apply
<b>Notes</b>	Parking area outside of lease. Operational area - Parking Area, overhanging limbs.





<b>Waypoint Reference</b>	26
<b>Site</b>	Structural Workshop car park
<b>Tenement</b>	MCI 70/1A
<b>GPS Coordinates</b>	N 8847213.3725, E 574029.2889
<b>Photo Direction</b>	5° N
<b>Native Vegetation</b>	<i>Macaranga tanarius</i>
<b>Weed Species</b>	<i>Delonix regia</i> <i>Muntingia calabura</i> <i>Cocos nucifera</i> <i>Leucaena leucocephala</i> Other weed species
<b>Vegetation Rating (1=Pristine, 7=Cleared)</b>	6, 7
<b>ESA</b>	Outside, exemptions apply
<b>Notes</b>	Operational area.



<b>Waypoint Reference</b>	27
<b>Site</b>	Laboratory
<b>Tenement</b>	MCI 70/1A
<b>GPS Coordinates</b>	N 8847306.2640, E 574095.2675
<b>Photo Direction</b>	220° SW
<b>Native Vegetation</b>	<i>Arenga listeri</i> <i>Dysoxylum gaudichaudianum</i> <i>Ficus microcarpa</i>
<b>Weed Species</b>	<i>Delonix regia</i> <i>Leucaena leucocephala</i> <i>Cocos nucifera</i> <i>Muntingia calabura</i> Other weed species
<b>Vegetation Rating (1=Pristine, 7=Cleared)</b>	7
<b>ESA</b>	Outside, exemptions apply
<b>Notes</b>	Operational area – limbs overhanging lease boundary.

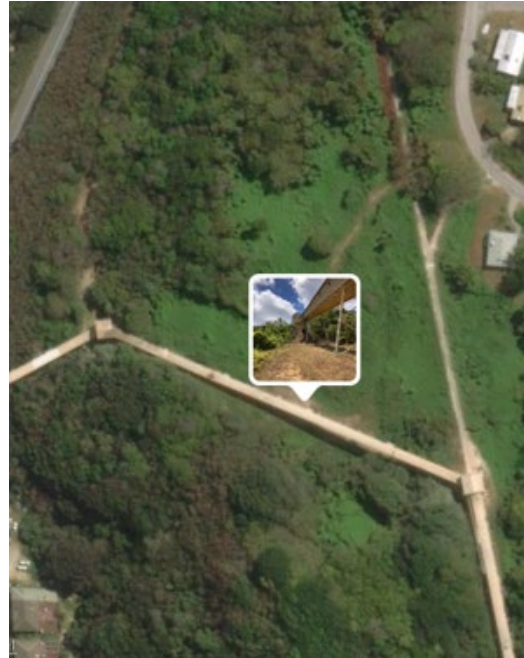


<b>Waypoint Reference</b>	28
<b>Site</b>	CIEM Workshop
<b>Tenement</b>	MCI 70/1A
<b>GPS Coordinates</b>	N 8847239.2940, E 574004.0209
<b>Photo Direction</b>	0° N
<b>Native Vegetation</b>	<i>Maclura cochinchinensis</i> <i>Arenga listeri</i>
<b>Weed Species</b>	<i>Spathodea campanulata</i> <i>Leucaena leucocephala</i> <i>Ricinus communis</i> <i>Muntingia calabura</i> <i>Delonix regia</i> Other weed species
<b>Vegetation Rating (1=Pristine, 7=Cleared)</b>	6, 7
<b>ESA</b>	Outside, exemptions apply
<b>Notes</b>	Operational area - weed dominated.





<b>Waypoint Reference</b>	29
<b>Site</b>	Downhill
<b>Tenement</b>	MCI 70/1A
<b>GPS Coordinates</b>	N 8847333.9822, E 573969.4663
<b>Photo Direction</b>	20° N
<b>Native Vegetation</b>	<i>Gyrocarpus americanus</i> <i>Maclura cochinchinensis</i> <i>Schefflera elliptica</i> <i>Dysoxylum gaudichaudianum</i> <i>Tristiropsis acutangula</i> <i>Tectaria dissecta</i>
<b>Weed Species</b>	<i>Leucaena leucocephala</i> Other weed species
<b>Vegetation Rating (1=Pristine, 7=Cleared)</b>	6, 7
<b>ESA</b>	Inside, exemptions do not apply
<b>Notes</b>	Outside of D10 conveyor. Operational area - vegetation along conveyor.



<b>Waypoint Reference</b>	30
<b>Site</b>	Downhill - D11
<b>Tenement</b>	MCI 70/1A
<b>GPS Coordinates</b>	N 8847639.0677, E 573850.9666
<b>Photo Direction</b>	110° E
<b>Native Vegetation</b>	<i>Maclura cochinchinensis</i> <i>Schefflera elliptica</i> <i>Ficus microcarpa</i>
<b>Weed Species</b>	<i>Leucaena leucocephala</i> <i>Antigonon leptopus</i> <i>Manihot esculenta</i> <i>Carica papaya</i> Other weed species
<b>Vegetation Rating (1=Pristine, 7=Cleared)</b>	6, 7
<b>ESA</b>	Inside, exemptions do not apply
<b>Notes</b>	Operational area - largely cleared or weeds with overhanging native limbs.



<b>Waypoint Reference</b>	31
<b>Site</b>	Downhill-D12
<b>Tenement</b>	MCI 70/1A
<b>GPS Coordinates</b>	N 8847671.0644, E 573737.4897
<b>Photo Direction</b>	230° SW
<b>Native Vegetation</b>	<i>Macaranga tanarius</i> <i>Maclura cochinchinensis</i> <i>Schefflera elliptica</i>
<b>Weed Species</b>	<i>Leucaena leucocephala</i> <i>Muntingia calabura</i> <i>Delonix regia</i> <i>Musa acuminata</i> <i>Manihot esculenta</i> Other weed species
<b>Vegetation Rating (1=Pristine, 7=Cleared)</b>	5, 6
<b>ESA</b>	Inside, exemptions do not apply
<b>Notes</b>	Operational area – weed dominated.





<b>Waypoint Reference</b>	32
<b>Site</b>	Shiploading
<b>Tenement</b>	MCI 70/1A
<b>GPS Coordinates</b>	N 8847624.0924, E 573615.9671
<b>Photo Direction</b>	240° WSW
<b>Native Vegetation</b>	<i>Scaevola taccada</i>
<b>Weed Species</b>	<i>Leucaena leucocephala</i> <i>Cocos nucifera</i> <i>Delonix regia</i> Other weed species
<b>Vegetation Rating (1=Pristine, 7=Cleared)</b>	7
<b>ESA</b>	Outside, exemptions apply
<b>Notes</b>	Entrance to Shiploading. Operational area - Vegetation is in poor condition from salt burn and outside of lease.

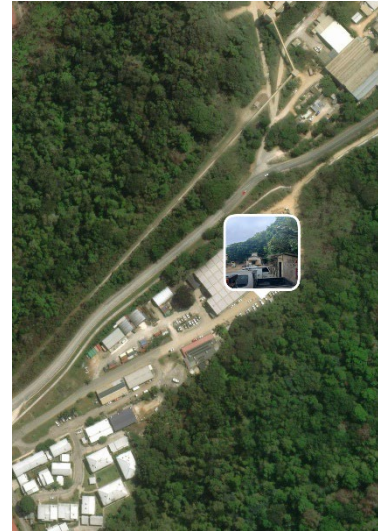


<b>Waypoint Reference</b>	33
<b>Site</b>	CIP Main Office
<b>Tenement</b>	MCI 70/1A
<b>GPS Coordinates</b>	N 8846446.2113, E 573371.5731
<b>Photo Direction</b>	65° NE
<b>Native Vegetation</b>	<i>Ficus macrocarpa</i> <i>Arenga listeri</i> <i>Tristiropsis acutangula</i> <i>Asplenium nidus</i> <i>Inocaropus fagifer</i> <i>Carmona retusa</i>
<b>Weed Species</b>	<i>Leucaena leucocephala</i> Other weed species
<b>Vegetation Rating (1=Pristine, 7=Cleared)</b>	5, 7
<b>ESA</b>	Outside, exemptions apply
<b>Notes</b>	Healthy vegetation growth, boundary ~2m from grassed area.

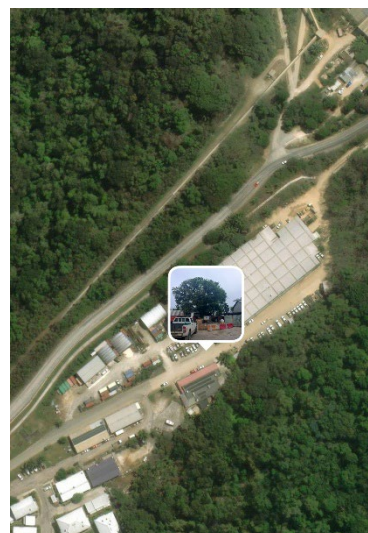


<b>Waypoint Reference</b>	34
<b>Site</b>	CIP Main Office
<b>Tenement</b>	MCI 70/1A
<b>GPS Coordinates</b>	N 8846462.6747, E 573401.1515
<b>Photo Direction</b>	20° N
<b>Native Vegetation</b>	<i>Carmona retusa</i> <i>Schefflera elliptica</i> <i>Leea angulata</i> <i>Barringtonia racemosa</i> <i>Arenga listeri</i> <i>Ficus microcarpa</i> <i>Dysoxylum gaudichaudianum</i> <i>Inocarpus fagifer</i> <i>Macaranga tanarius</i>
<b>Weed Species</b>	<i>Murraya koenigii</i> Other weed species
<b>Vegetation Rating (1=Pristine, 7=Cleared)</b>	5, 7
<b>ESA</b>	Outside, exemptions apply
<b>Notes</b>	Garden area with overhanging limbs of native vegetation.

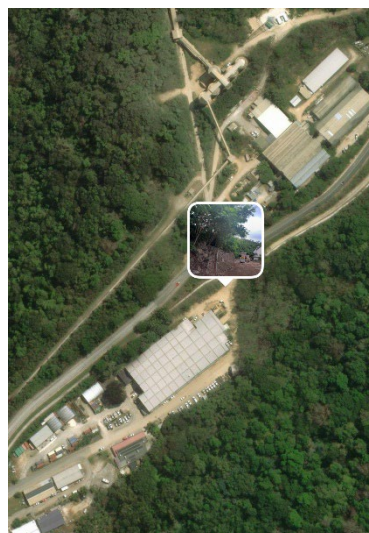




<b>Waypoint Reference</b>	35
<b>Site</b>	Workshop Carpark
<b>Tenement</b>	MCI 70/1A
<b>GPS Coordinates</b>	N 8847000.4809, E 573980.7210
<b>Photo Direction</b>	50° NE
<b>Native Vegetation</b>	<i>Ficus microcarpa</i> <i>Macaranga tanarius</i> <i>Arenga listeri</i> <i>Terminalia catappa</i>
<b>Weed Species</b>	<i>Delonix regia</i> <i>Leucaena leucocephala</i> Other weed species
<b>Vegetation Rating (1=Pristine, 7=Cleared)</b>	3, 7
<b>ESA</b>	Outside, exemptions apply
<b>Notes</b>	Cliff-side vegetation and overhanging limbs.

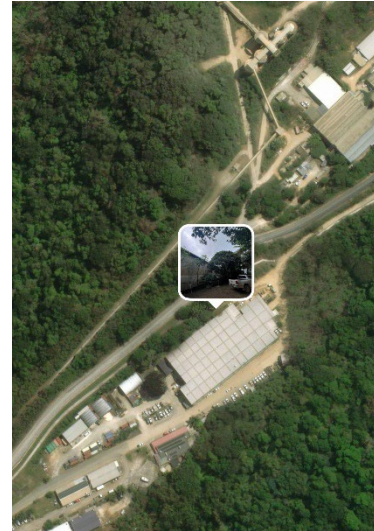


<b>Waypoint Reference</b>	36
<b>Site</b>	Warehouse
<b>Tenement</b>	MCI 70/1A
<b>GPS Coordinates</b>	N 8846981.6921, E 573927.1450
<b>Photo Direction</b>	331° NW
<b>Native Vegetation</b>	-
<b>Weed Species</b>	<i>Mangifera indica</i> <i>Leucaena leucocephala</i> Other weed species
<b>Vegetation Rating (1=Pristine, 7=Cleared)</b>	7
<b>ESA</b>	Outside, exemptions apply
<b>Notes</b>	Weeds surrounding single <i>Mangifera indica</i> . Vegetation along the fence is outside of boundary.

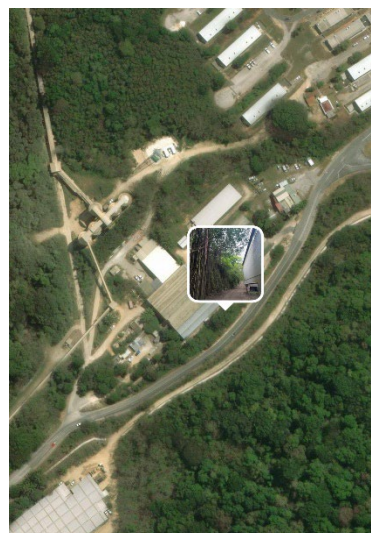
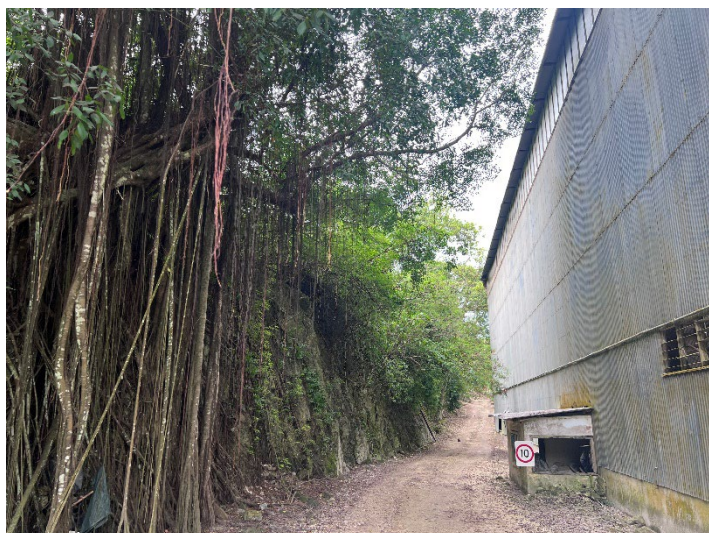


<b>Waypoint Reference</b>	37
<b>Site</b>	MPM Back Gate
<b>Tenement</b>	MCI 70/1A
<b>GPS Coordinates</b>	N 8847097.2100, E 574005.0768
<b>Photo Direction</b>	125° SE
<b>Native Vegetation</b>	<i>Ficus microcarpa</i>
<b>Weed Species</b>	<i>Delonix regia</i> <i>Leucaena leucocephala</i> Other weed species
<b>Vegetation Rating (1=Pristine, 7=Cleared)</b>	6, 7
<b>ESA</b>	Outside, exemptions apply
<b>Notes</b>	Cliff-side vegetation, weed dominated.

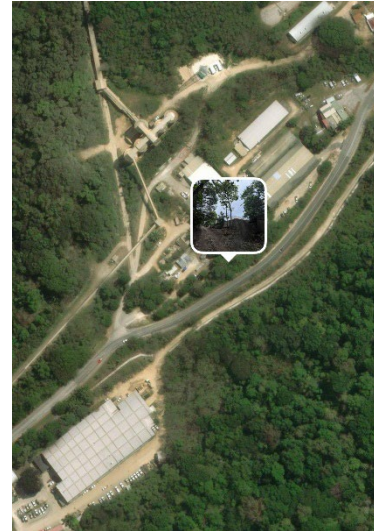




<b>Waypoint Reference</b>	38
<b>Site</b>	Behind Electrical Workshop
<b>Tenement</b>	MCI 70/1A
<b>GPS Coordinates</b>	N 8847065.9627, E 573960.8625
<b>Photo Direction</b>	217° SW
<b>Native Vegetation</b>	<i>Ficus microcarpa</i> <i>Nephrolepis biserrata</i>
<b>Weed Species</b>	<i>Mangifera indica</i> <i>Cocos nucifera</i> <i>Delonix regia</i> <i>Pandanus amaryllifolius</i> <i>Psidium guajava</i> Other weed species
<b>Vegetation Rating (1=Pristine, 7=Cleared)</b>	6, 7
<b>ESA</b>	Outside, exemptions apply
<b>Notes</b>	



<b>Waypoint Reference</b>	39
<b>Site</b>	Behind the Old Wet Bin/ Structural Workshop
<b>Tenement</b>	MCI 70/1A
<b>GPS Coordinates</b>	N 8847216.1956, E 574104.7099
<b>Photo Direction</b>	207° SW
<b>Native Vegetation</b>	<i>Ficus microcarpa</i> <i>Microsorium scolopendria</i> <i>Guettarda speciosa</i> <i>Schefflera elliptica</i> <i>Nephrolepis biserrata</i> <i>Macaranga tanarius</i>
<b>Weed Species</b>	<i>Leucaena leucocephala</i> Other weed species
<b>Vegetation Rating (1=Pristine, 7=Cleared)</b>	7
<b>ESA</b>	Outside, exemptions apply
<b>Notes</b>	Limbs overhanging lease boundary.

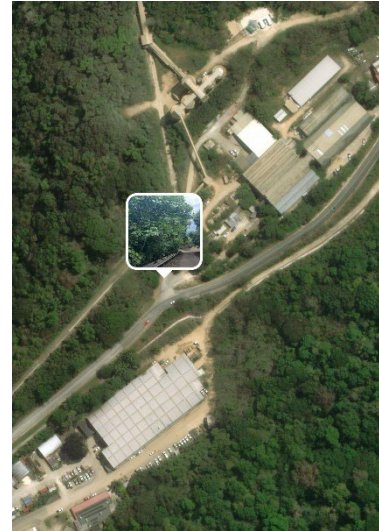


<b>Waypoint Reference</b>	40
<b>Site</b>	Behind the Old Wet Bin/ Structural Workshop
<b>Tenement</b>	MCI 70/1A
<b>GPS Coordinates</b>	N 8847183.1137, E 574067.8285
<b>Photo Direction</b>	272° W
<b>Native Vegetation</b>	<i>Macaranga tanarius</i> <i>Microsorium scolopendria</i> <i>Maclura cochinchinensis</i> <i>Ficus microcarpa</i> <i>Barringtonia racemosa</i>
<b>Weed Species</b>	<i>Mangifera indica</i> <i>Carica papaya</i> Other weed species
<b>Vegetation Rating (1=Pristine, 7=Cleared)</b>	7
<b>ESA</b>	Outside, exemptions apply
<b>Notes</b>	Overhanging limbs and individual trees only.





<b>Waypoint Reference</b>	41
<b>Site</b>	Entrance to Green Space
<b>Tenement</b>	MCI 70/1A
<b>GPS Coordinates</b>	N 8847142.0913, E 574011.6224
<b>Photo Direction</b>	351° N
<b>Native Vegetation</b>	<i>Terminalia catappa</i> <i>Macaranga tanarius</i> <i>Asplenium nidus</i> <i>Maclura cochinchinensis</i> <i>Planchonella nitida</i> <i>Barringtonia racemosa</i> <i>Dysoxylum gaudichaudianum</i>
<b>Weed Species</b>	<i>Leucaena leucocephala</i> <i>Dracaena fragrans</i> <i>Musa acuminata</i> Other weed species
<b>Vegetation Rating (1=Pristine, 7=Cleared)</b>	5
<b>ESA</b>	Outside, exemptions apply
<b>Notes</b>	



<b>Waypoint Reference</b>	42
<b>Site</b>	Entrance to Downhill from Murray Road
<b>Tenement</b>	MCI 70/1A
<b>GPS Coordinates</b>	N 8847153.5353, E 573983.7439
<b>Photo Direction</b>	357° N
<b>Native Vegetation</b>	<i>Macaranga tanarius</i> <i>Maclura cochinchinensis</i> <i>Terminalia catappa</i> <i>Schefflera elliptica</i> <i>Dysoxylum gaudichaudianum</i>
<b>Weed Species</b>	<i>Carica papaya</i> <i>Leucaena leucocephala</i> <i>Delonix regia</i> Other weed species
<b>Vegetation Rating (1=Pristine, 7=Cleared)</b>	5, 7
<b>ESA</b>	Outside, exemptions apply
<b>Notes</b>	Overhanging limbs.